



Stoneleigh View

Kenilworth

bovishomes.co.uk

**Bovis
Homes** 



Our name has been synonymous with building since 1885, when Charles William Bovis bought a construction company in the London Borough of Marylebone and changed its name to CW Bovis & Co.

From those foundations has grown a Bovis heritage to be proud of, including quality homes and communities across Britain.

Welcome to Stoneleigh View

Our stunning development of brand new three to five bedroom family homes is enviably located on the East side of Kenilworth on the desirable Glasshouse Lane.

Location

Stoneleigh View also enjoys beautiful countryside views whilst being less than a mile and a half to the centre of the modern market town of Kenilworth, one of the most desirable places to live in Warwickshire.

Kenilworth is less than five miles from Coventry and just 6 miles from both Warwick and Leamington Spa. With junction 15 of the M40 just six miles away, and Junction 2 of the M6 just under 12 miles away; getting around for work or pleasure is a breeze. Kenilworth railway station offers services to Coventry and Leamington Spa with journey times of around 10 minutes each. From these stations, connections to London and Birmingham can be taken with ease. For international destinations, Birmingham Airport is 15 miles away.


Entertainment and leisure

There are plenty of options for a family day out around Kenilworth. Why not take a step back in time at Kenilworth Castle to explore the Elizabethan Garden? For a relaxed afternoon, visit Abbey Fields where you'll find a large open park featuring tennis courts, a children's playground and a lake. Just a few miles away you can explore Hatton Adventure World and enjoy a day to remember. The town also has two theatres, The Talisman and The Priory ideal for an evening out. When it comes to dining, locals are spoilt for choice. From the Michelin starred gastropub, The Cross, to a wide variety of bars and restaurants serving international cuisine. Not forgetting the many tea shops, coffee shops and patisseries catering for weary shoppers! Kenilworth is also well provided for when it comes to sport. With funding from the development going towards sports provision, health and libraries.

Development layout

Stoneleigh View boasts a stunning range of 3, 4 and 5 bedroom homes each with unique views and aspects. Discover your dream home today.



 The Oak
5 bedroom home



 The Lime
5 bedroom home




 The Birch
5 bedroom home



 The Redwood
5 bedroom home



 The Rosewood
4 bedroom home



 The Aspen
4 bedroom home



 The Maple
4 bedroom home



 The Beech
3 bedroom home




 The Spruce
3 bedroom home



 The Rowan
3 bedroom home

 Affordable housing

 leap local equipped area of play

 bcp bin collection point

 v visitor parking space



The plan overleaf has been produced for home identification purposes only and is not to scale. The development layout, landscaping and tenure of all dwellings may be subject to change throughout the course of the development. Finishes and materials may vary from those shown on the plan. Please check the details of your chosen plot and house type with the sales consultant. Development layout plan correct at time of production.



The Oak

5 bedroom home

Floor area
227 sq.m 2447 sq.ft

Ground floor	metres	feet / inches
Kitchen / family / dining area	8.29 x 5.09	27' 2" x 16' 8"
Sitting room	5.70 x 4.06	18' 8" x 13' 4"
Dining room	4.06 x 3.05	13' 4" x 10' 0"
Study	4.50 x 2.39	14' 9" x 7' 10"

First floor	metres	feet / inches
Bedroom 1	4.69 x 4.09	15' 4" x 13' 5"
Bedroom 2	4.37 x 3.40	14' 4" x 11' 2"
Bedroom 3	4.13 x 3.15	13' 6" x 10' 4"
Bedroom 4	3.23 x 2.32	10' 7" x 7' 7"
Bedroom 5	3.19 x 2.34	10' 6" x 7' 8"

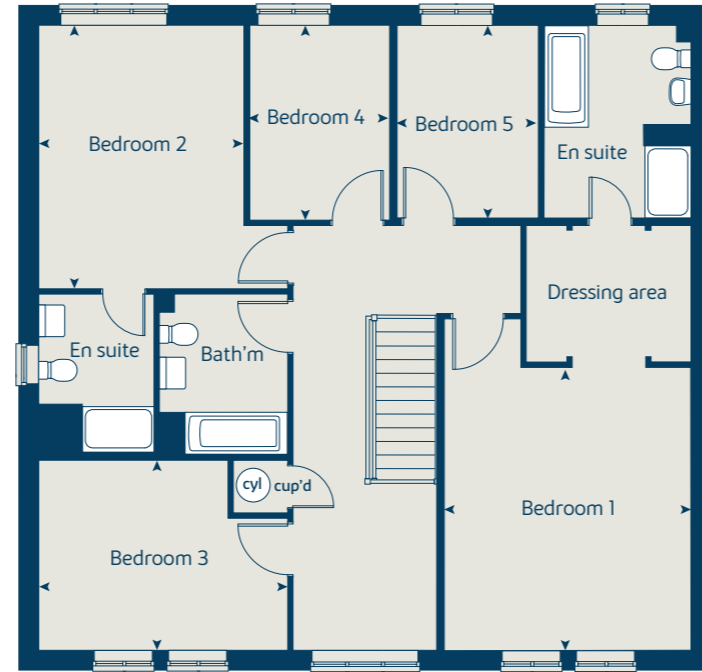
The Oak | X531 CCREW |
This floorplan has been produced for illustrative purposes only. Room sizes shown are between arrow points as indicated on plan. The dimensions have tolerances of + or -50mm and should not be used other than for general guidance. If specific dimensions are required, enquiries should be made to the sales consultant.

ovn	oven	ffzr	fridge freezer
h	hob	cyl	hot water cylinder
wm	washing machine	cup'd	cupboard
dw	dishwasher	◀ ▶	measuring points

Ground floor



First floor



* Windows apply to selected plots only. Please see sales consultant for further details.

Please refer to the sales consultant for specific plot details as the illustrations shown are computer generated impressions of how the property may look so are indicative only. External details or finishes may vary on individual plots and homes may be built in either detached or attached styles depending on the development layout. Exact specifications, window styles and whether a property is left or right handed may differ from plot to plot. The floorplans shown are not to scale. Measurements are based on the original drawings. Slight variations may occur during construction.



The Lime

5 bedroom home

Floor area
191 sq.m 2063 sq.ft

Ground floor	metres	feet / inches
Kitchen / family / dining area	4.24 x 3.93	13' 10" x 12' 10"
Sitting room	5.39 x 3.86	17' 8" x 12' 8"
Dining room	3.86 x 2.77	12' 8" x 9' 1"
Study	3.58 x 2.54	11' 9" x 8' 4"

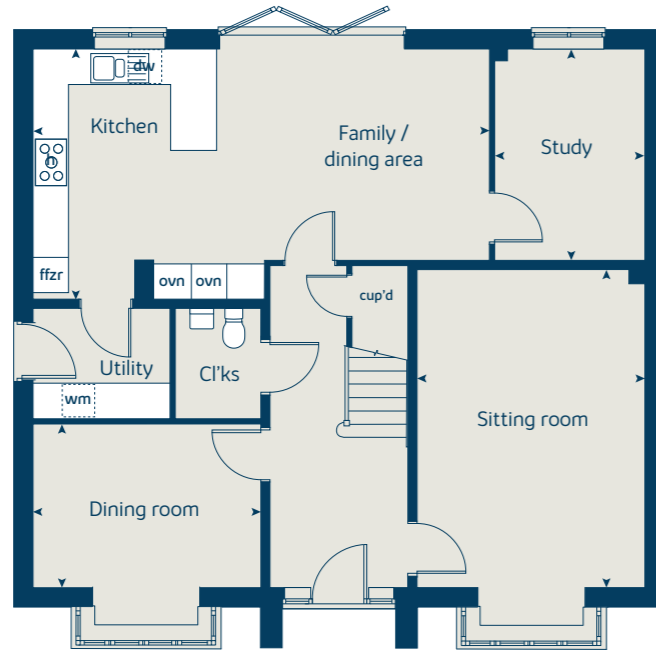
First floor	metres	feet / inches
Bedroom 1	4.05 x 3.75	13' 3" x 12' 3"
Bedroom 2	4.05 x 3.52	13' 3" x 11' 7"
Bedroom 3	3.26 x 3.24	10' 8" x 10' 6"
Bedroom 4	3.54 x 2.26	11' 8" x 7' 4"
Bedroom 5	2.86 x 2.44	9' 5" x 8' 0"

The Lime | X520 (IF) 01 CCREW |

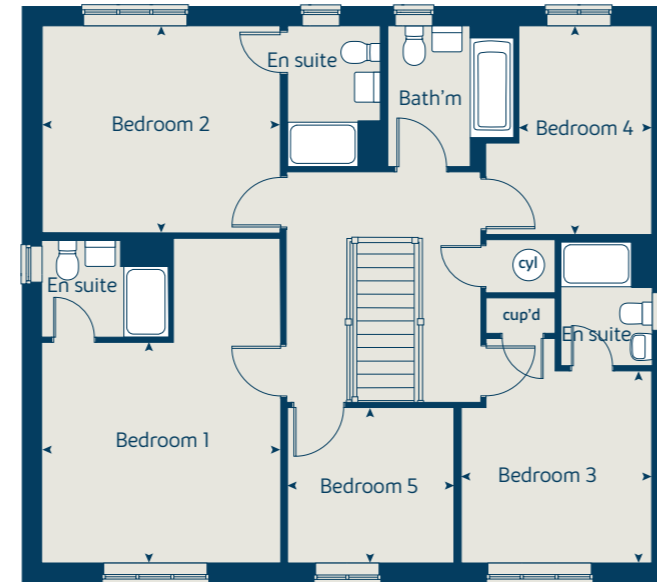
This floorplan has been produced for illustrative purposes only. Room sizes shown are between arrow points as indicated on plan. The dimensions have tolerances of + or -50mm and should not be used other than for general guidance. If specific dimensions are required, enquiries should be made to the sales consultant.

ovn	oven	ffzr	fridge freezer
h	hob	cyl	hot water cylinder
dw	dishwasher	cup'd	cupboard
wm	washing machine	◀ ▶	measuring points

Ground floor



First floor



Please refer to the sales consultant for specific plot details as the illustrations shown are computer generated impressions of how the property may look so are indicative only. External details or finishes may vary on individual plots and homes may be built in either detached or attached styles depending on the development layout. Exact specifications, window styles and whether a property is left or right handed may differ from plot to plot. The floorplans shown are not to scale. Measurements are based on the original drawings. Slight variations may occur during construction.

The Birch

5 bedroom home

Floor area
167 sq.m 1805 sq.ft

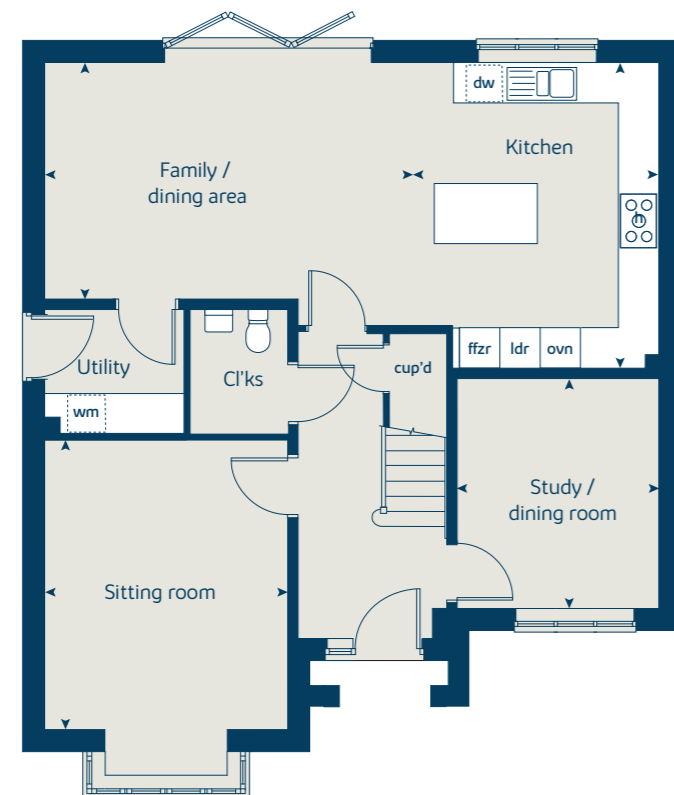
Ground floor	metres	feet / inches
Kitchen	4.52 x 3.71	14' 10" x 12' 2"
Family / dining area	5.42 x 3.52	17' 9" x 11' 7"
Sitting room	4.30 x 3.61	14' 1" x 11' 10"
Study / dining room	3.41 x 3.00	11' 2" x 9' 10"

First floor	metres	feet / inches
Bedroom 1	3.61 x 3.51	11' 10" x 11' 6"
Bedroom 2	3.92 x 2.91	12' 10" x 9' 7"
Bedroom 3	3.06 x 2.75	10' 0" x 9' 0"
Bedroom 4	3.31 x 2.83	10' 10" x 9' 3"
Bedroom 5	2.83 x 2.69	9' 3" x 8' 10"

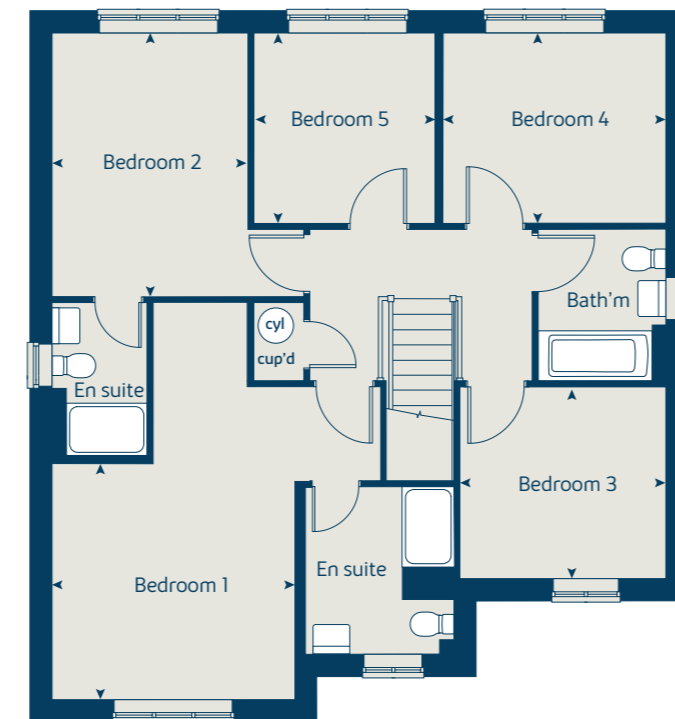
The Birch | X518 (F) 01 CCREW |
This floorplan has been produced for illustrative purposes only. Room sizes shown are between arrow points as indicated on plan. The dimensions have tolerances of + or -50mm and should not be used other than for general guidance. If specific dimensions are required, enquiries should be made to the sales consultant.

ovn	oven	ldr	larder
h	hob	cyl	hot water cylinder
dw	dishwasher	cup'd	cupboard
wm	washing machine	< >	measuring points
ffzr	fridge freezer		

Ground floor



First floor



Please refer to the sales consultant for specific plot details as the illustrations shown are computer generated impressions of how the property may look so are indicative only. External details or finishes may vary on individual plots and homes may be built in either detached or attached styles depending on the development layout. Exact specifications, window styles and whether a property is left or right handed may differ from plot to plot. The floorplans shown are not to scale. Measurements are based on the original drawings. Slight variations may occur during construction.



The Redwood

5 bedroom home

Floor area
139 sq.m | 1504 sq.ft

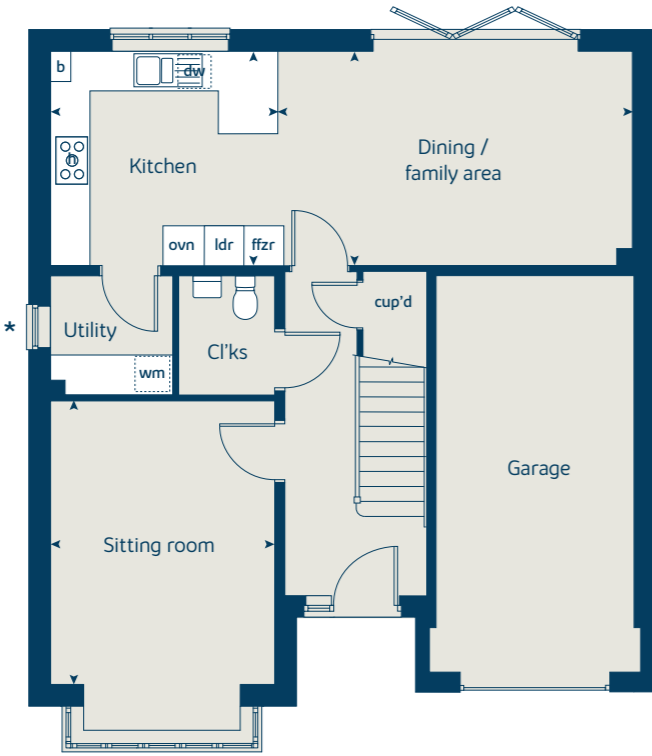
Ground floor	metres	feet / inches
Kitchen	3.40 x 3.24	11' 2" x 10' 7"
Dining / family area	5.35 x 3.24	17' 6" x 10' 8"
Sitting room	4.28 x 3.40	14' 1" x 11' 2"

First floor	metres	feet / inches
Bedroom 1	4.10 x 3.39	13' 5" x 11' 1"
Bedroom 2	3.03 x 2.91	9' 11" x 9' 6"
Bedroom 3	3.35 x 2.91	11' 0" x 9' 7"
Bedroom 4	3.03 x 2.94	9' 11" x 9' 8"
Bedroom 5	2.94 x 2.19	9' 8" x 7' 2"

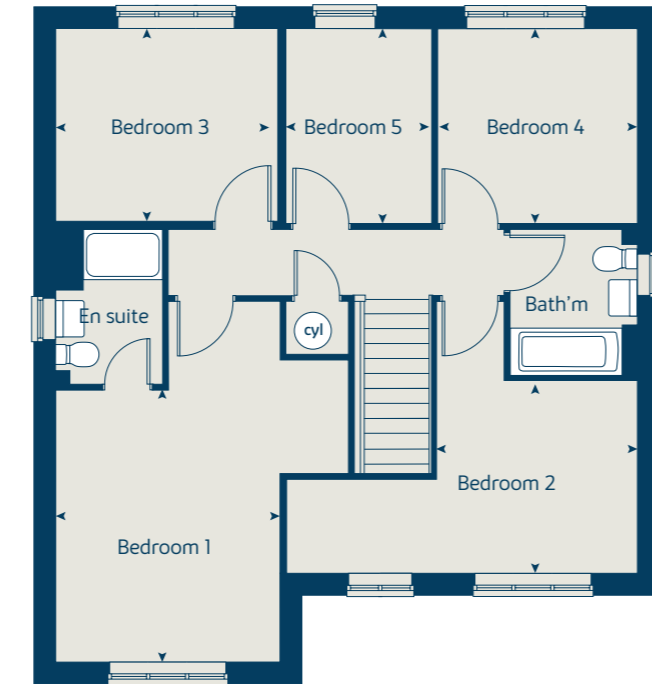
The Redwood | X5415 01 vt CCREW |
This floorplan has been produced for illustrative purposes only. Room sizes shown are between arrow points as indicated on plan. The dimensions have tolerances of + or -50mm and should not be used other than for general guidance. If specific dimensions are required, enquiries should be made to the sales consultant.

ovn	oven	ldr	larder
h	hob	cyl	hot water cylinder
dw	dishwasher	b	boiler
wm	washing machine	◀ ▶	measuring points
ffzr	fridge freezer		

Ground floor



First floor



* Window applies to selected plots only. Please see sales consultant for further details.
Please refer to the sales consultant for specific plot details as the illustrations shown are computer generated impressions of how the property may look so are indicative only. External details or finishes may vary on individual plots and homes may be built in either detached or attached styles depending on the development layout. Exact specifications, window styles and whether a property is left or right handed may differ from plot to plot. The floorplans shown are not to scale. Measurements are based on the original drawings. Slight variations may occur during construction.



The Rosewood

4 bedroom home

Floor area

107 sq.m 1159 sq.ft

Ground floor	metres	feet / inches
Kitchen / dining area	5.50 x 3.50	18' 1" x 11' 6"
Sitting room	4.40 x 3.40	14' 5" x 11' 2"

First floor

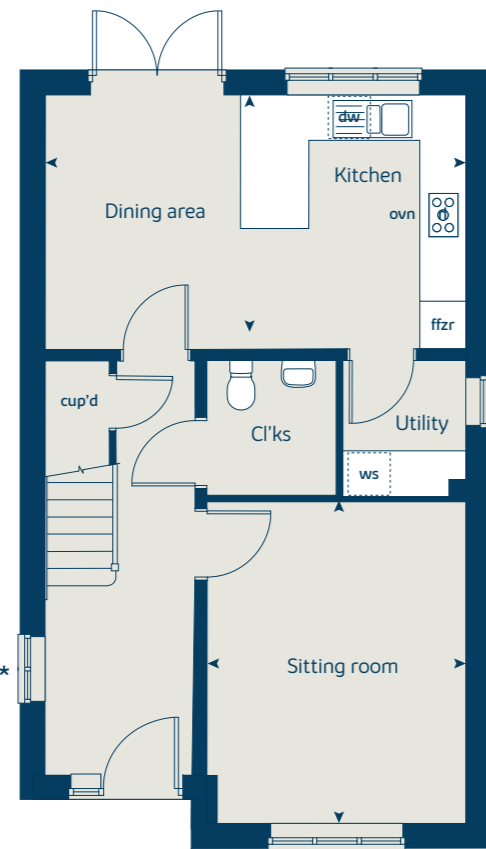
Bedroom 1	3.59 x 3.27	11' 9" x 10' 9"
Bedroom 2	3.27 x 2.67	10' 9" x 8' 9"
Bedroom 3	3.52 x 2.16	11' 7" x 7' 1"
Bedroom 4 / study	2.55 x 2.16	8' 5" x 7' 1"

The Rosewood | X4308 (IF) 01 VT CCREW |

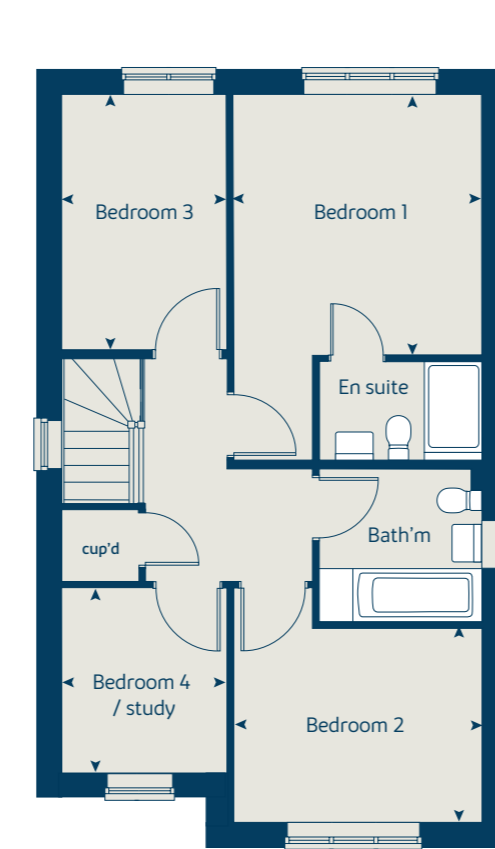
This floorplan has been produced for illustrative purposes only. Room sizes shown are between arrow points as indicated on plan. The dimensions have tolerances of + or -50mm and should not be used other than for general guidance. If specific dimensions are required, enquiries should be made to the sales consultant.

ovn	oven	ffzr	fridge freezer
h	hob	cup'd	cupboard
dw	dishwasher	◀ ▶	measuring points
ws	washing machine space		

Ground floor



First floor



* Window applies to selected plots only. Please see sales consultant for further details.

** Window omitted to selected plots only. Please see sales consultant for further details.

Please refer to the sales consultant for specific plot details as the illustrations shown are computer generated impressions of how the property may look so are indicative only. External details or finishes may vary on individual plots and homes may be built in either detached or attached styles depending on the development layout. Exact specifications, window styles and whether a property is left or right handed may differ from plot to plot. The floorplans shown are not to scale. Measurements are based on the original drawings. Slight variations may occur during construction.



The Aspen

4 bedroom home

Floor area

127 sq.m 1370 sq.ft

Ground floor	metres	feet / inches
Kitchen / dining area	7.77 x 3.58	25' 6" x 11' 9"
Sitting room	5.04 x 3.39	16' 6" x 11' 1"
Study	2.02 x 2.01	6' 7" x 6' 7"

First floor

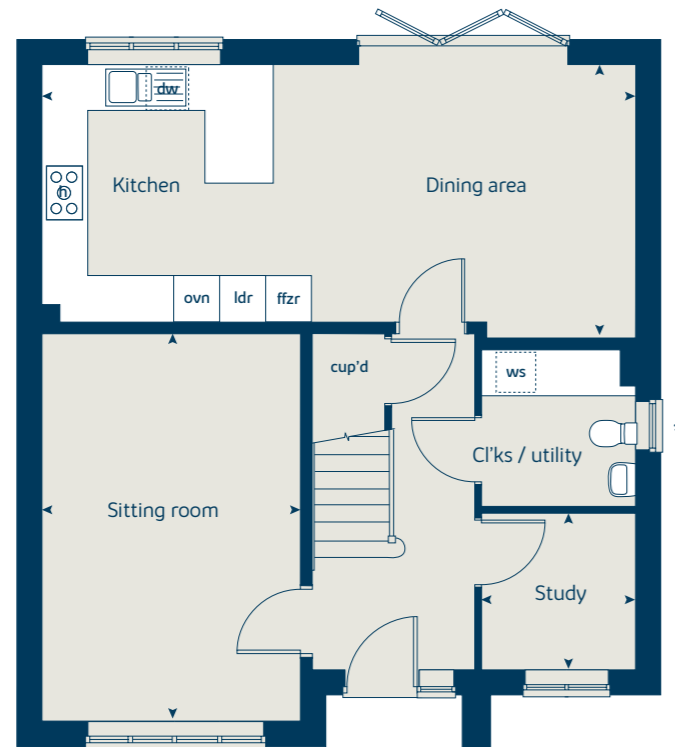
Bedroom 1	4.52 x 3.81	14' 10" x 12' 6"
Bedroom 2	3.87 x 3.11	12' 8" x 10' 2"
Bedroom 3	4.07 x 2.41	13' 4" x 7' 11"
Bedroom 4	3.61 x 2.45	11' 10" x 8' 1"

The Aspen | X414 (IF) 01 CCREW |

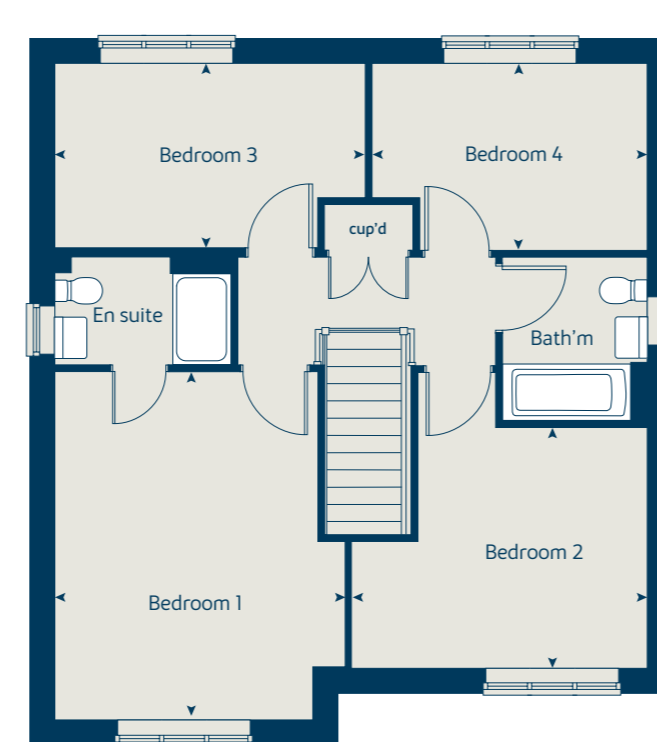
This floorplan has been produced for illustrative purposes only. Room sizes shown are between arrow points as indicated on plan. The dimensions have tolerances of + or -50mm and should not be used other than for general guidance. If specific dimensions are required, enquiries should be made to the sales consultant.

ovn	oven	ffzr	fridge freezer
h	hob	ldr	larder
dw	dishwasher	cup'd	cupboard
ws	washing machine space	◀ ▶	measuring points

Ground floor



First floor



* Window applies to selected plots only. Please see sales consultant for further details.

Please refer to the sales consultant for specific plot details as the illustrations shown are computer generated impressions of how the property may look so are indicative only. External details or finishes may vary on individual plots and homes may be built in either detached or attached styles depending on the development layout. Exact specifications, window styles and whether a property is left or right handed may differ from plot to plot. The floorplans shown are not to scale. Measurements are based on the original drawings. Slight variations may occur during construction.



The Maple

4 bedroom home

Floor area

166 sq.m 1792 sq.ft

Ground floor	metres	feet / inches
Kitchen	3.74 x 3.48	12' 2" x 11' 4"
Family / dining area	7.28 x 3.23	23' 11" x 10' 1"
Sitting room	5.14 x 3.50	16' 10" x 11' 6"
Study	2.50 x 2.29	8' 2" x 7' 6"

First floor

Bedroom 1	3.60 x 3.50	11' 10" x 11' 6"
Bedroom 2	3.64 x 3.56	11' 11" x 11' 8"
Bedroom 3	4.17 x 2.90	13' 8" x 9' 6"
Bedroom 4	2.95 x 2.90	9' 8" x 9' 6"

The Maple | X416 01 CCREW |

This floorplan has been produced for illustrative purposes only. Room sizes shown are between arrow points as indicated on plan. The dimensions have tolerances of + or -50mm and should not be used other than for general guidance. If specific dimensions are required, enquiries should be made to the sales consultant.

ovn	oven	ffzr	fridge freezer
h	hob	cyl	hot water cylinder
dw	dishwasher	cup'd	cupboard
wm	washing machine	◀ ▶	measuring points



* Window omitted to selected plots only. Please see sales consultant for further details.

Please refer to the sales consultant for specific plot details as the illustrations shown are computer generated impressions of how the property may look so are indicative only. External details or finishes may vary on individual plots and homes may be built in either detached or attached styles depending on the development layout. Exact specifications, window styles and whether a property is left or right handed may differ from plot to plot. The floorplans shown are not to scale. Measurements are based on the original drawings. Slight variations may occur during construction.



The Beech

3 bedroom home

Floor area
104 sq.m 1124 sq.ft

Ground floor	metres	feet / inches
Kitchen / dining room	4.74 x 2.91	15' 6" x 9' 7"
Sitting room	3.99 x 3.72	13' 1" x 12' 2"

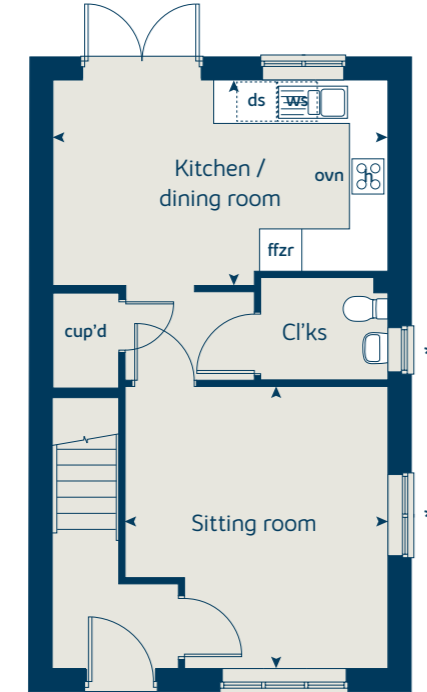
First floor	metres	feet / inches
Bedroom 2	4.74 x 2.62	15' 6" x 8' 7"
Bedroom 3	3.39 x 2.49	11' 1" x 8' 2"

Second floor	metres	feet / inches
Bedroom 1	3.62 x 3.44	11' 10" x 11' 4"

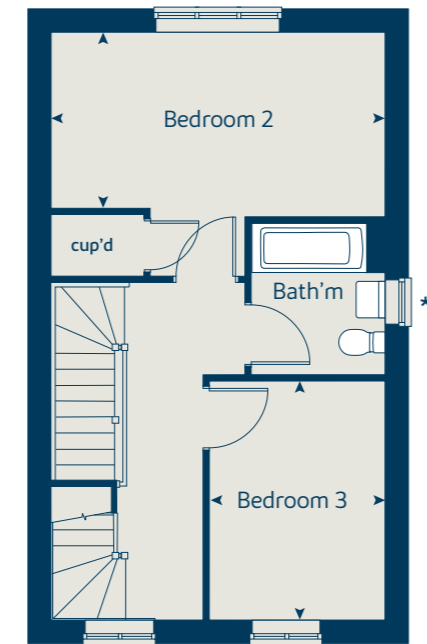
The Beech | X309 v1 CCREW |
This floorplan has been produced for illustrative purposes only. Room sizes shown are between arrow points as indicated on plan. The dimensions have tolerances of + or -50mm and should not be used other than for general guidance. If specific dimensions are required, enquiries should be made to the sales consultant.

ovn	oven	ffzr	fridge freezer
h	hob	cup'd	cupboard
dw	dishwasher	◀ ▶	measuring points
ws	washing machine space		

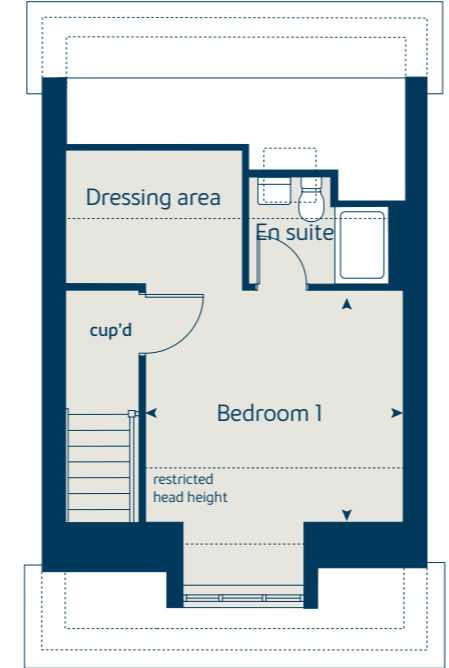
Ground floor



First floor



Second floor



* Windows apply to selected plots only. Please see sales consultant for further details.

Please refer to the sales consultant for specific plot details as the illustrations shown are computer generated impressions of how the property may look so are indicative only. External details or finishes may vary on individual plots and homes may be built in either detached or attached styles depending on the development layout. Exact specifications, window styles and whether a property is left or right handed may differ from plot to plot. The floorplans shown are not to scale. Measurements are based on the original drawings. Slight variations may occur during construction.



The Spruce

3 bedroom home

Floor area
102 sq.m 1099 sq.ft

Ground floor	metres	feet / inches
Kitchen	3.16 x 2.69	10' 3" x 8' 10"
Dining area	3.14 x 2.36	10' 4" x 7' 7"
Sitting room	5.52 x 3.32	18' 1" x 10' 11"

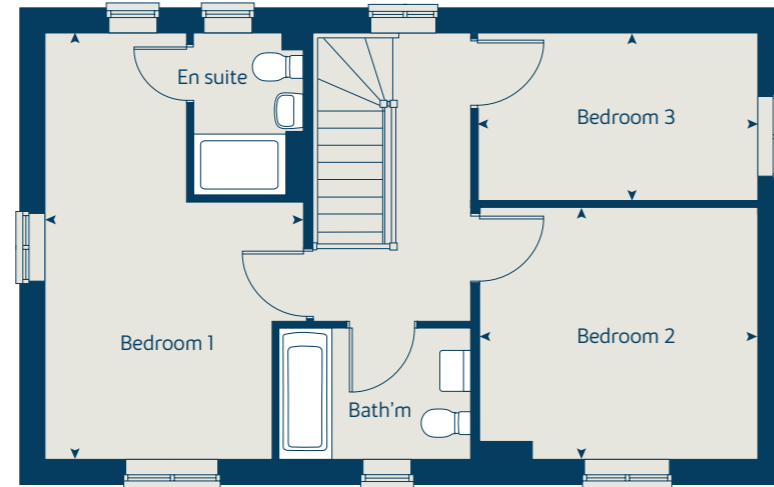
First floor	metres	feet / inches
Bedroom 1	3.35 x 3.33	11' 0" x 10' 11"
Bedroom 2	3.59 x 3.26	11' 10" x 10' 9"
Bedroom 3	3.63 x 2.17	11' 11" x 7' 1"

The Spruce | X307 (IF) 01 CCREW |

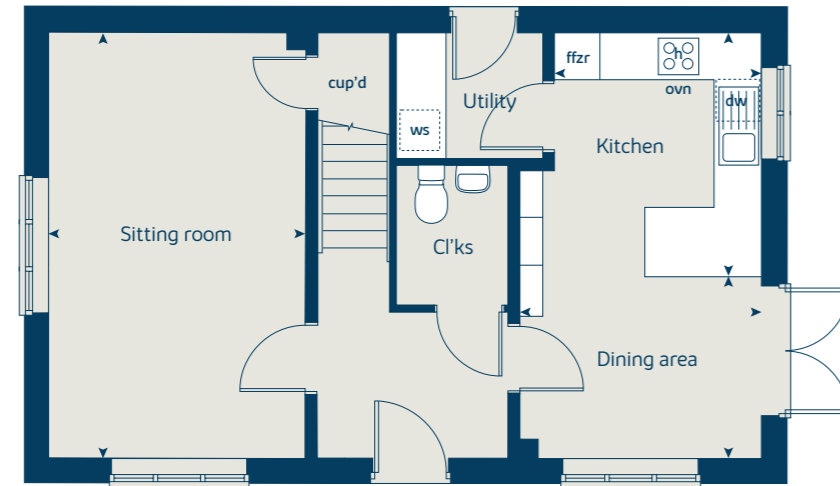
This floorplan has been produced for illustrative purposes only. Room sizes shown are between arrow points as indicated on plan. The dimensions have tolerances of + or -50mm and should not be used other than for general guidance. If specific dimensions are required, enquiries should be made to the sales consultant.

ovn	oven	ffzr	fridge freezer
h	hob	cup'd	cupboard
dw	dishwasher	◀ ▶	measuring points
ws	washing machine space		

First floor



Ground floor



Please refer to the sales consultant for specific plot details as the illustrations shown are computer generated impressions of how the property may look so are indicative only. External details or finishes may vary on individual plots and homes may be built in either detached or attached styles depending on the development layout. Exact specifications, window styles and whether a property is left or right handed may differ from plot to plot. The floorplans shown are not to scale. Measurements are based on the original drawings. Slight variations may occur during construction.



The Rowan

3 bedroom home

Floor area
86 sq.m 931 sq.ft

Ground floor	metres	feet / inches
Kitchen	2.85 x 2.46	9' 4" x 8' 1"
Sitting / dining room	5.49 x 5.19	18' 0" x 17' 0"

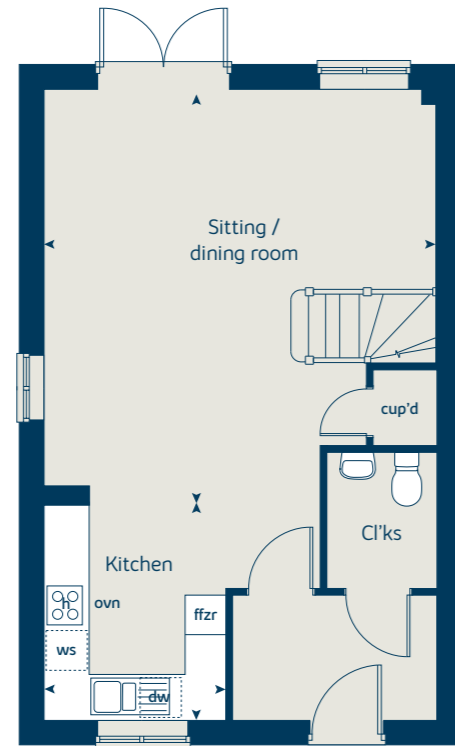
First floor	metres	feet / inches
Bedroom 1	3.68 x 3.57	12' 1" x 11' 8"
Bedroom 2	2.97 x 2.44	9' 9" x 8' 0"
Bedroom 3	3.54 x 2.12	11' 7" x 7' 0"

The Rowan | X306 01 CCREW |

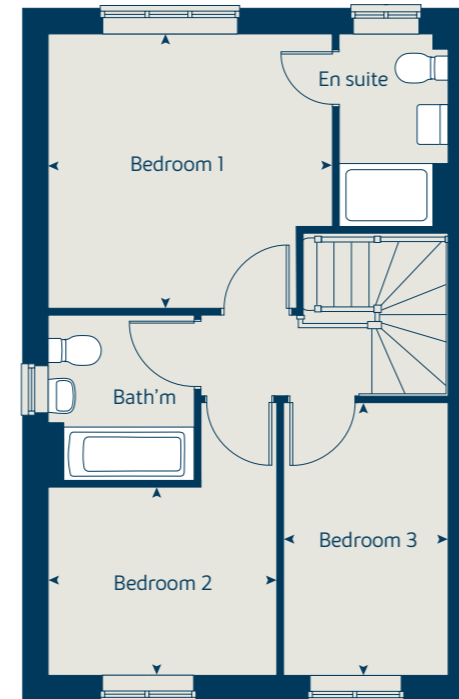
This floorplan has been produced for illustrative purposes only. Room sizes shown are between arrow points as indicated on plan. The dimensions have tolerances of + or -50mm and should not be used other than for general guidance. If specific dimensions are required, enquiries should be made to the sales consultant.

ovn	oven	ffzr	fridge freezer
h	hob	cup'd	cupboard
dw	dishwasher	◀ ▶	measuring points
ws	washing machine space		

Ground floor



First floor



Please refer to the sales consultant for specific plot details as the illustrations shown are computer generated impressions of how the property may look so are indicative only. External details or finishes may vary on individual plots and homes may be built in either detached or attached styles depending on the development layout. Exact specifications, window styles and whether a property is left or right handed may differ from plot to plot. The floorplans shown are not to scale. Measurements are based on the original drawings. Slight variations may occur during construction.





Enhance and personalise your new home with upgrades and extras from our **Select** range

On top of the unique specification at Stoneleigh View, you can also use the Bovis Homes Select brochure to add even more finishing touches to your property and personalise your new home even more.

Customise your kitchen with stylish worktops and the latest modern appliances and personalise your bathrooms with stunning ceramics. Using the Select range there are various options allowing you to create your perfect property which is truly unique to you.

You can personalise every space in your home from kitchen cupboards and electrics to built in wardrobes and if you have a preference for flooring, you can select from our diverse range that includes luxurious carpets, ceramics and vinyl.

The availability of items is subject to the stage of build and can vary by development and housetype. Our sales consultants will be pleased to provide guidance.

Pick up a **Select** brochure from your sales consultant today to find an extensive list of items available. Such as:

- Quartz kitchen worktops
- Premium appliance packages
- Flooring
- Built-in Symphony wardrobes
- Upgraded tiling in main bathroom and en suite

The availability of items is subject to the stage of build and can vary by development and housetype. Our sales consultants will be pleased to provide you with a full brochure and guidance.

A home designed with you in mind

We are constantly reviewing our houses and ensuring they are everything that our customers want in a home. That's why we are proud to have developed and launched our new range of homes.

These homes have been created to embrace modern design and styling, whilst retaining the classic architectural traditions on which Bovis Homes has built its heritage and brand since 1885.

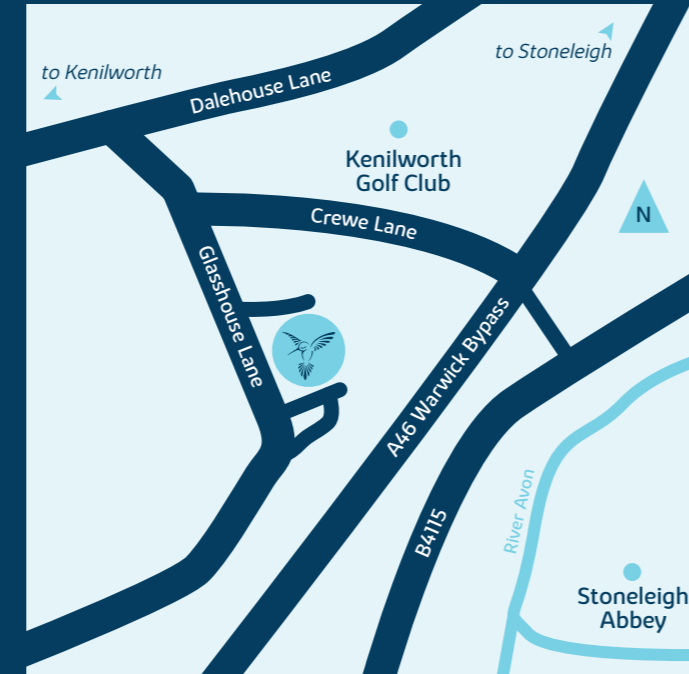
An integral part of the design process for our new range of homes was to ensure they have a real wow factor and eye-catching kerb appeal. From designing external elevations to create attractive street scenes through to maximising the flow and size of the rooms, the homes include a variety of features to capture the attention.

The size, positioning and number of windows in our new collection have created bright and airy homes, this mixed in with the higher ceilings gives your property a spacious feel.

The flow and layout of the new homes has been a key consideration to accommodate today's lifestyles, with a focus on future living. With the kitchen at the heart of the home, impressive family spaces have been included to create spacious, sociable living areas, while attention to master bedrooms and en suites has given the homes added desirability.

Stoneleigh View

Glasshouse Lane, Kenilworth,
Warwickshire CV8 2SB
01926 953650



Every care has been taken in the preparation of this brochure. Bovis Homes operates a programme of continuous product development. Features, internal and external, may vary from time to time and may differ from those shown in this brochure. The development layout, landscaping and tenure of all dwellings may be subject to change throughout the course of the development.

Computer generated images, maps, photography, and imagery are intended for illustrative purposes. Features, designs, materials, and visual depictions must be treated as general guidance only. Please speak to a sales consultant for details of specific homes.

Vistry South Central Midlands region

Bromwich Court, Highway Point, Gorsey Lane, Coleshill, Warwickshire B46 1JU. Telephone: 01675 437 000

Produced by the Vistry Group Design Studio.

CCREW DS09746 / 03.24

