



ROMAN FIELDS
BANBURY



Our name has been synonymous with building since 1885, when Charles William Bovis bought a construction company in the London Borough of Marylebone and changed its name to CW Bovis & Co.

From those foundations has grown a Bovis heritage to be proud of, including quality homes and communities across Britain.

Welcome to Roman Fields

Our prestigious development of brand new homes are located on the desirable Warwick Road in Banbury.

Roman Fields offers a contemporary collection of 2, 3, 4 and 5 bedroom homes.





A taste of local life

This stunning new development is just 2 miles from the centre of the charming Oxfordshire market town of Banbury, close to rolling countryside and with excellent transport links to major UK cities.

Getting around

Roman Fields is just a 10 minute drive from the centre of Banbury. The closest motorway is the M40, where junction 11 links the area to Birmingham and the Midlands in the north and to Oxford and London to the south. Local buses serve outlying areas, while National Express runs coaches from Banbury to many UK towns and cities.

Trains run from Banbury to Warwick, Birmingham, Oxford and London and many other major locations. For air travel Birmingham Airport is just under 40 miles away.

Taking time out

The town has a great choice of pubs and restaurants, a cinema and a live music venue. Bicester, just 17 miles away, is a fantastic location for places to visit, whether it's for scenic walks, a trip to the golf course, or a day out at Bicester Village, a designer shopping outlet with more than 130 luxury boutiques and stores. Historic Oxford - 'The city of dreaming spires' - is just 30 miles away and offers stunning architecture and many great attractions.

A trip to the shops

A convenient Sainsbury's Local is located on the edge of the Roman Fields development, while Banbury town centre has an array of local independent shops and national names just 2 miles away.

The Castle Quays Shopping Centre offers around 85 high street stores to choose from and many dining options. Regular markets are held in the town centre offering everything from local produce to antiques and gifts. For city shopping Oxford is about 30 miles away.

Education

Hardwick Primary School and North Oxfordshire Academy are both 1 mile from Roman Fields, while Hanwell Fields Community School is just under a mile and a half away. Banbury also offers a variety of schools and nurseries.

For further education, Banbury and Bicester College also offers a wide range of courses across several campuses in the area.

Development layout

Roman Fields boasts a stunning range of two to five bedroom homes each with unique views and aspects. Discover your dream home in Banbury today.



The Ashwood
5 bedroom homes



The Pinewood
5 bedroom homes



The Maple
4 bedroom homes



The Aspen
4 bedroom homes



The Knightwood
4 bedroom homes



The Chestnut
4 bedroom homes



The Mylnewood
4 bedroom homes



The Attwood
3 bedroom homes



The Cypress
3 bedroom homes



The Jasmine
3 bedroom homes



The Jasmine SE
3 bedroom homes



The Spruce
3 bedroom homes



The Linwood
3 bedroom homes



The Mountwood
3 bedroom homes



The Rowtree
3 bedroom homes



The Holly
2 bedroom homes



The Ivy
2 bedroom bungalows



The Harwood
2 bedroom homes

Pre-sold homes

- 1 bedroom homes
- 2 bedroom homes
- 3 bedroom homes
- 4 bedroom homes

- v visitor space
- ss substation
- bs bin store
- cs cycle store
- bcp bin collection point



The Lime
5 bedroom homes



The Yew
5 bedroom homes



This plan has been produced for home identification purposes only and is not to scale. The development layout, landscaping and tenure of all dwellings may be subject to change throughout the course of the development. Finishes and materials may vary from those shown on the plan. Please check the details of your chosen plot and house type with the sales consultant. Development layout plan correct at time of production.



The Lime

5 bedroom home

Floor area: 191 sq.m | 2,063 sq.ft

Ground floor	metres	feet / inches
Kitchen / family / dining area	7.69 x 3.58	25' 3" x 11' 9"
Sitting room	5.39 x 3.86	17' 8" x 12' 8"
Dining room	3.86 x 2.77	12' 7" x 9' 1"
Study	3.58 x 2.54	11' 8" x 8' 4"

First floor	metres	feet / inches
Bedroom 1	4.05 x 3.75	13' 3" x 12' 3"
Bedroom 2	4.05 x 3.52	13' 3" x 11' 7"
Bedroom 3	3.26 x 3.23	10' 8" x 10' 7"
Bedroom 4	3.54 x 2.25	11' 8" x 7' 5"
Bedroom 5	2.86 x 2.64	9' 5" x 8' 8"

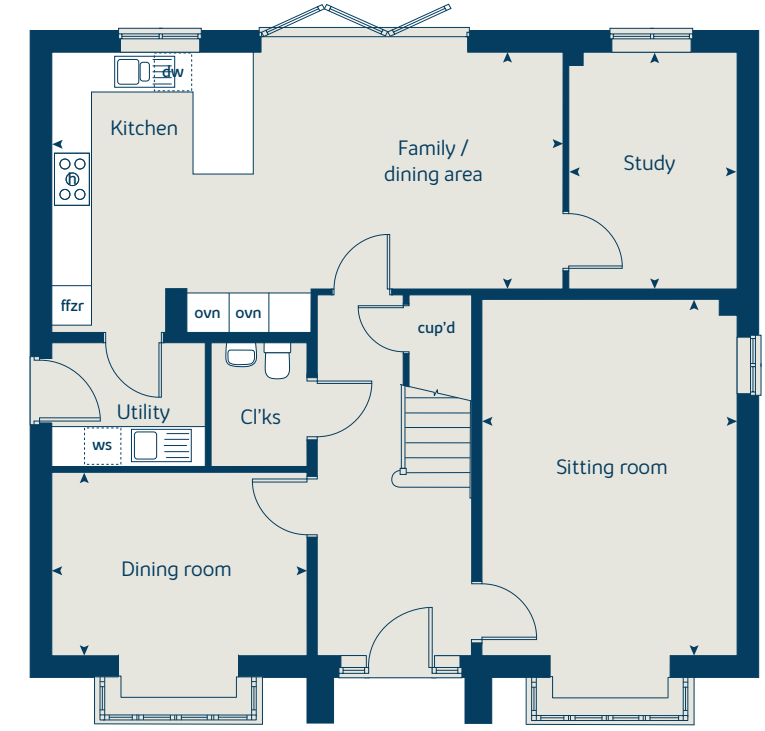
ovn	oven	ffzr	fridge freezer
h	hob	cyl	hot water cylinder
dw	dishwasher	cup'd	cupboard
ws	washing machine space	<>	measuring points

The Lime | X520 (IF) vt CBAND |
 The floorplan has been produced for illustrative purposes only. Room sizes shown are between arrow points as indicated on plan. The dimensions have tolerances of + or -50mm and should not be used other than for general guidance. If specific dimensions are required, enquiries should be made to the sales consultant. The floor plans shown are not to scale. Measurements are based on the original drawings. Slight variations may occur during construction.

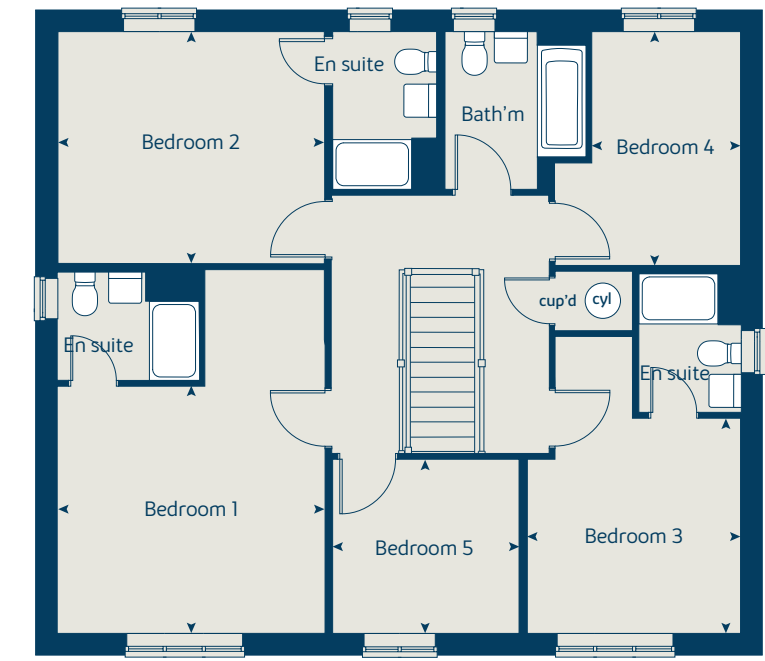
The illustrations shown are computer generated impressions of how the property may look and are indicative only. External details or finishes may vary on individual plots and homes may be built in either detached or attached styles depending on the development layout. Exact specifications, window styles and whether a property is left or right handed may differ from plot to plot. Please speak to our sales consultant for specific plot details.

* Window omitted to selected plots only. Please see sales consultant for further details.

Ground floor



First floor



The Yew

5 bedroom home

Floor area: 170 sq.m | 1,832 sq.ft

Ground floor	metres	feet / inches
Kitchen / dining area	8.44 x 3.16	27' 8" x 10' 4"
Kitchen / dining area*	6.54 x 5.07	21' 5" x 16' 8"
Sitting room	4.69 x 3.17	15' 4" x 10' 5"
Study	3.17 x 1.76	10' 5" x 5' 9"

First floor	metres	feet / inches
Bedroom 1	4.18 x 3.73	12' 3" x 13' 8"
Bedroom 3	4.20 x 3.23	13' 9" x 10' 7"
Bedroom 5	2.91 x 2.27	9' 7" x 7' 5"

Second floor	metres	feet / inches
Bedroom 2	5.03 x 3.22	16' 6" x 10' 7"
Bedroom 4	3.73 x 2.86	12' 3" x 9' 5"

ovn	oven	cup'd	cupboard
h	hob	ldr	larder
dw	dishwasher	cyl	hot water cylinder
ws	washing machine space	◀ ▶	measuring points
ffzr	fridge freezer		

The Yew | X519 CBAND |
 The floorplan has been produced for illustrative purposes only. Room sizes shown are between arrow points as indicated on plan. The dimensions have tolerances of + or -50mm and should not be used other than for general guidance. If specific dimensions are required, enquiries should be made to the sales consultant. The floor plans shown are not to scale. Measurements are based on the original drawings. Slight variations may occur during construction.
 The illustrations shown are computer generated impressions of how the property may look and are indicative only. External details or finishes may vary on individual plots and homes may be built in either detached or attached styles depending on the development layout. Exact specifications, window styles and whether a property is left or right-handed may differ from plot to plot. Please speak to our sales consultant for specific plot details.

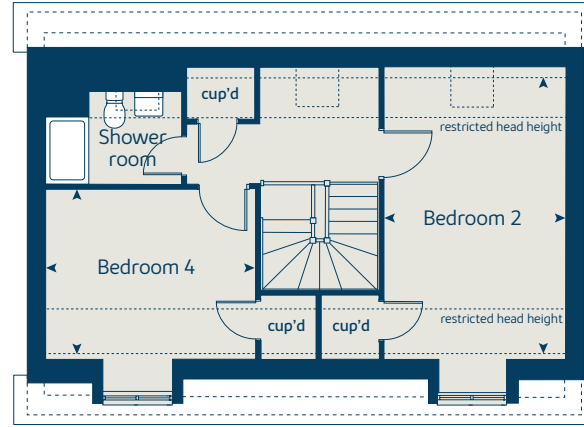
① Alternative layout applies to selected plots only.

② Alternative window layout applies to selected plots only.

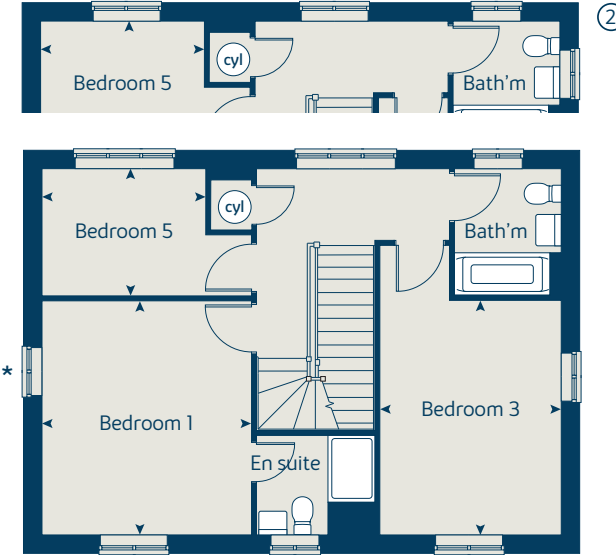
* Window applies to selected plots only.

Please see sales consultant for further details.

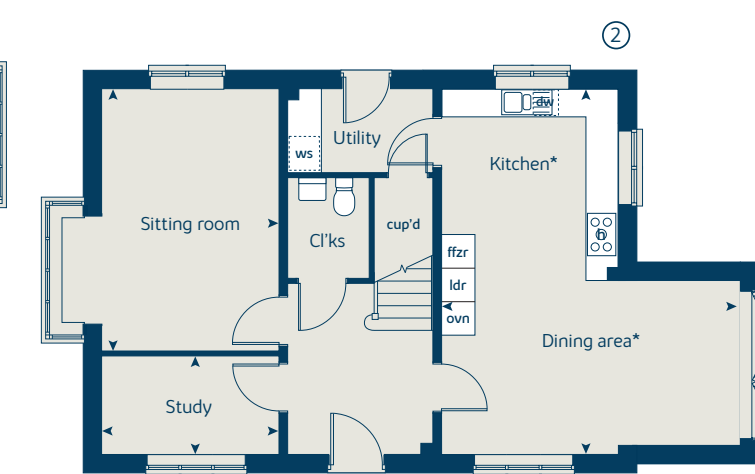
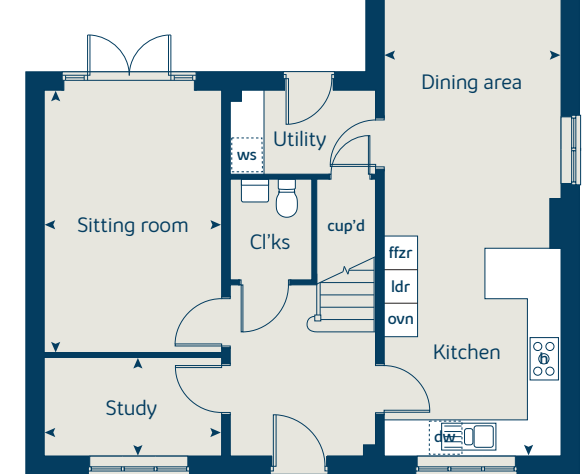
Second floor



First floor



Ground floor



The Ashwood

5 bedroom home

Floor area: 167 sq.m | 1,798 sq.ft

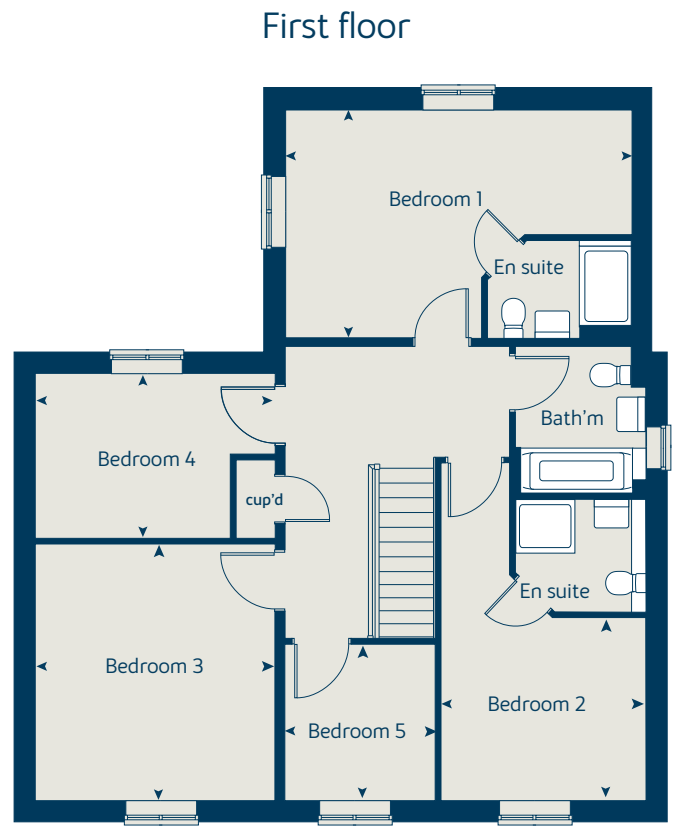
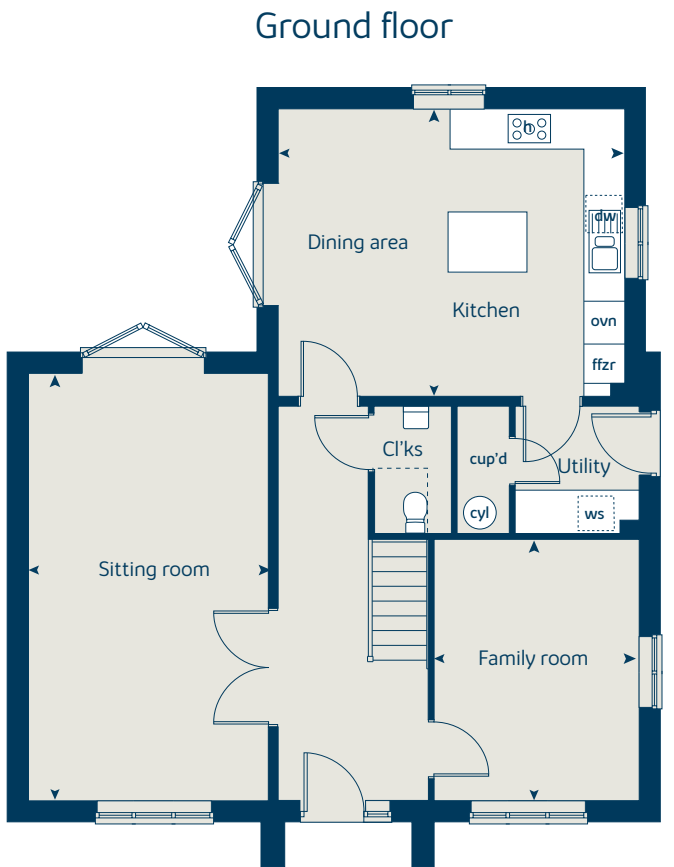
Ground floor	metres	feet / inches
Kitchen / dining area	5.30 x 4.40	17' 5" x 14' 5"
Sitting room	6.54 x 3.67	21' 5" x 12' 1"
Family room	4.00 x 3.14	13' 1" x 10' 3"

First floor	metres	feet / inches
Bedroom 1	5.30 x 3.51	17' 5" x 11' 6"
Bedroom 2	3.14 x 2.80	10' 3" x 9' 2"
Bedroom 3	3.92 x 3.67	12' 10" x 12' 1"
Bedroom 4	3.67 x 2.52	12' 1" x 8' 3"
Bedroom 5	2.39 x 2.30	7' 10" x 7' 6"

ovn	oven	ffzr	fridge freezer
h	hob	cup'd	cupboard
ws	washing machine space	cyl	hot water cylinder
dw	dishwasher	< >	measuring points

The Ashwood | WM406 CBAND |
 The floorplan has been produced for illustrative purposes only. Room sizes shown are between arrow points as indicated on plan. The dimensions have tolerances of + or -50mm and should not be used other than for general guidance. If specific dimensions are required, enquiries should be made to the sales consultant. The floor plans shown are not to scale. Measurements are based on the original drawings. Slight variations may occur during construction.

The illustrations shown are computer generated impressions of how the property may look and are indicative only. External details or finishes may vary on individual plots and homes may be built in either detached or attached styles depending on the development layout. Exact specifications, window styles and whether a property is left or right-handed may differ from plot to plot. Please speak to our sales consultant for specific plot details.



The Pinewood

5 bedroom home

Floor area: 140 sq.m | 1,512 sq.ft

Ground floor	metres	feet / inches
Kitchen	2.99 x 2.98	9' 10" x 9' 9"
Dining area	3.73 x 2.81	12' 3" x 9' 3"
Sitting room	4.82 x 3.40	15' 10" x 11' 2"
Study	3.40 x 1.80	11' 2" x 5' 11"

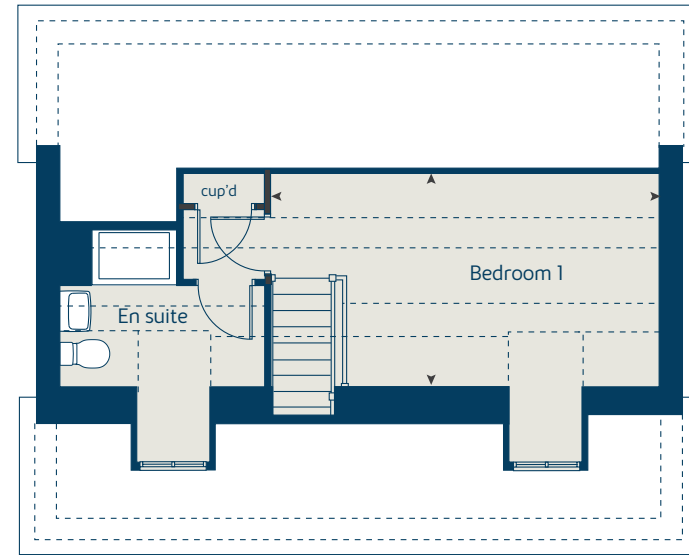
First floor	metres	feet / inches
Bedroom 2	3.85 x 3.35	12' 8" x 11' 0"
Bedroom 3	3.35 x 2.77	11' 0" x 9' 1"
Bedroom 4	3.03 x 2.87	9' 11" x 9' 5"
Bedroom 5	3.59 x 2.05	11' 9" x 6' 9"

Second floor	metres	feet / inches
Bedroom 1	5.44 x 3.03	17' 10" x 9' 11"

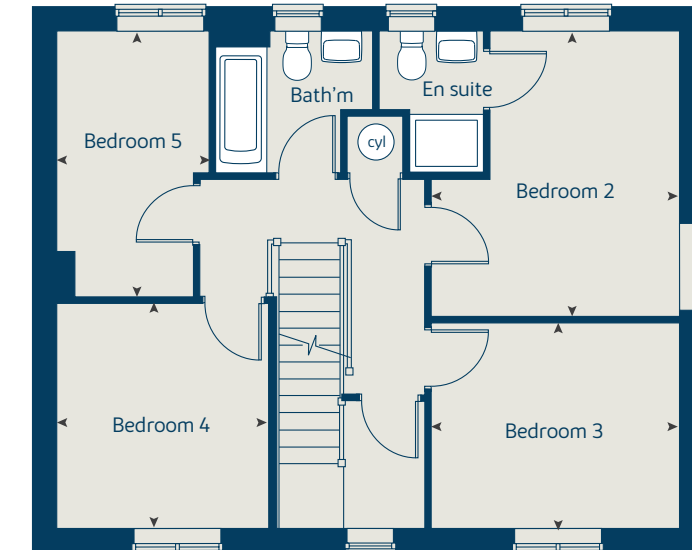
h	hob	ws	washing machine space
ovn	oven	cup'd	cupboard
ffzr	fridge freezer	< >	measuring points
dw	dishwasher		

The Pinewood | CBAND |
 The floorplan has been produced for illustrative purposes only. Room sizes shown are between arrow points as indicated on plan. The dimensions have tolerances of + or -50mm and should not be used other than for general guidance. If specific dimensions are required, enquiries should be made to the sales consultant. The floor plans shown are not to scale. Measurements are based on the original drawings. Slight variations may occur during construction.
 The illustrations shown are computer generated impressions of how the property may look and are indicative only. External details or finishes may vary on individual plots and homes may be built in either detached or attached styles depending on the development layout. Exact specifications, window styles and whether a property is left or right-handed may differ from plot to plot. Please speak to our sales consultant for specific plot details.

Second floor



First floor



Ground floor



The Maple

4 bedroom home

Floor area: 166 sq.m | 1,792 sq.ft

Ground floor	metres	feet / inches
Kitchen	3.78 x 3.50	12' 4" x 11' 5"
Family / dining area	7.28 x 3.23	23' 11" x 10' 7"
Sitting room	4.50 x 3.50	14' 9" x 11' 6"
Study	2.50 x 2.29	8' 2" x 7' 6"

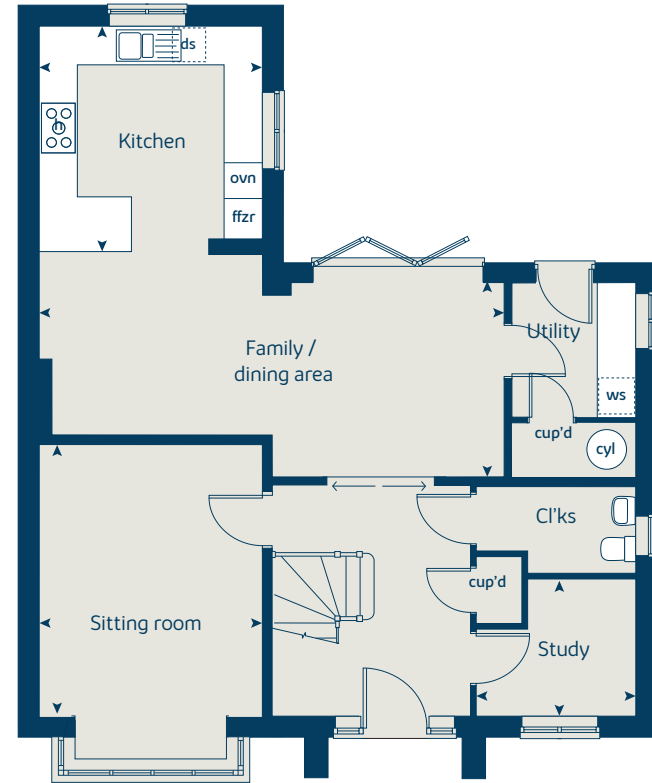
First floor	metres	feet / inches
Bedroom 1	3.60 x 3.50	11' 10" x 11' 6"
Bedroom 2	4.31 x 3.56	14' 2" x 11' 8"
Bedroom 3	4.17 x 2.90	13' 8" x 9' 6"
Bedroom 4	2.95 x 2.90	9' 8" x 9' 6"

ovn	oven	ffzr	fridge freezer
h	hob	cyl	hot water cylinder
ds	dishwasher space	cup'd	cupboard
ws	washing machine space	< >	measuring points

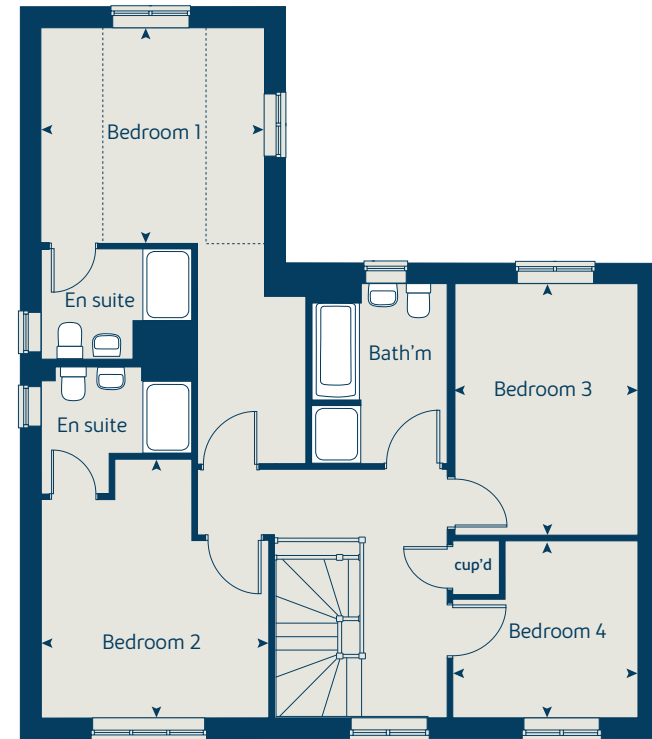
The Maple | X416 01 vt CBAND |
 The floorplan has been produced for illustrative purposes only. Room sizes shown are between arrow points as indicated on plan. The dimensions have tolerances of + or -50mm and should not be used other than for general guidance. If specific dimensions are required, enquiries should be made to the sales consultant. The floor plans shown are not to scale. Measurements are based on the original drawings. Slight variations may occur during construction.

The illustrations shown are computer generated impressions of how the property may look and are indicative only. External details or finishes may vary on individual plots and homes may be built in either detached or attached styles depending on the development layout. Exact specifications, window styles and whether a property is left or right-handed may differ from plot to plot. Please speak to our sales consultant for specific plot details.

Ground floor



First floor



The Aspen

4 bedroom home

Floor area: 134 sq.m | 1,449 sq.ft

Ground floor	metres	feet / inches
Kitchen / dining area	7.76 x 3.37	25' 5" x 11' 1"
Sitting room	5.66 x 3.39	16' 6" x 11' 1"
Study	2.69 x 2.02	8' 10" x 6' 7"

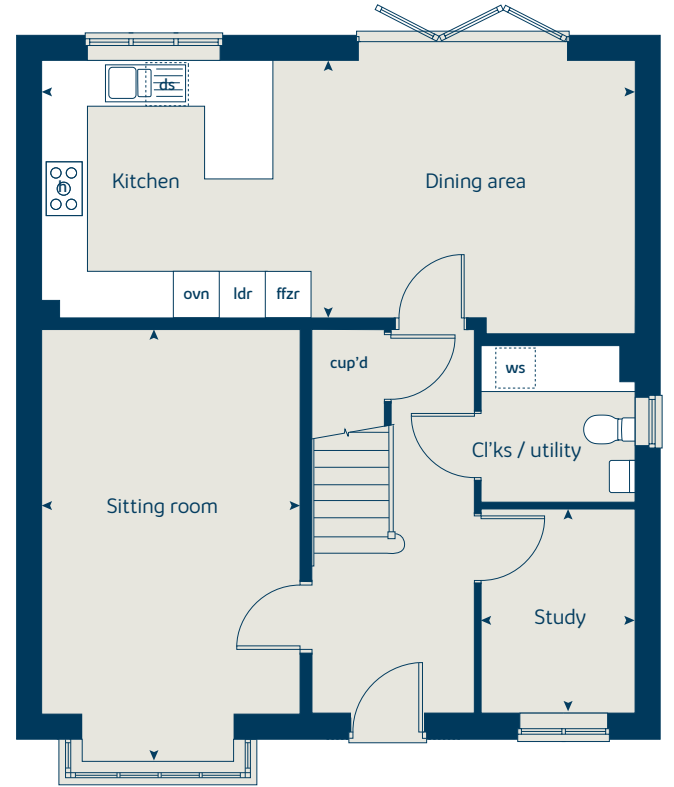
First floor	metres	feet / inches
Bedroom 1	4.52 x 3.81	14' 10" x 12' 6"
Bedroom 2	3.87 x 3.78	12' 8" x 12' 5"
Bedroom 3	4.07 x 2.42	13' 4" x 7' 11"
Bedroom 4	3.61 x 2.42	11' 10" x 7' 11"

ovn	oven	ffzr	fridge freezer
h	hob	ldr	larder
ds	dishwasher space	cup'd	cupboard
ws	washing machine space	<>	measuring points

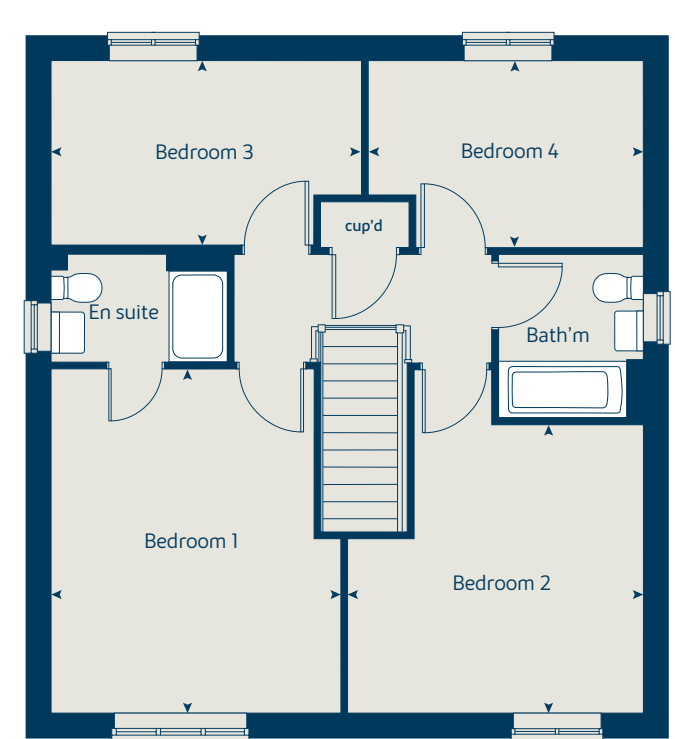
The Aspen | X414 (IF) vt CBAND |
 The floorplan has been produced for illustrative purposes only. Room sizes shown are between arrow points as indicated on plan. The dimensions have tolerances of + or -50mm and should not be used other than for general guidance. If specific dimensions are required, enquiries should be made to the sales consultant. The floor plans shown are not to scale. Measurements are based on the original drawings. Slight variations may occur during construction.
 The illustrations shown are computer generated impressions of how the property may look and are indicative only. External details or finishes may vary on individual plots and homes may be built in either detached or attached styles depending on the development layout. Exact specifications, window styles and whether a property is left or right handed may differ from plot to plot. Please speak to our sales consultant for specific plot details.

* Window applicable to selected plots only. Please see sales consultant for further information.

Ground floor



First floor



The Knightwood

4 bedroom home

Floor area: 132 sq.m | 1,429 sq.ft

Ground floor	metres	feet / inches
Kitchen / dining area	5.02 x 3.79	16' 6" x 12' 5"
Sitting room	5.36 x 3.22	17' 7" x 10' 7"
Family room	3.93 x 3.21	12' 1" x 10' 6"

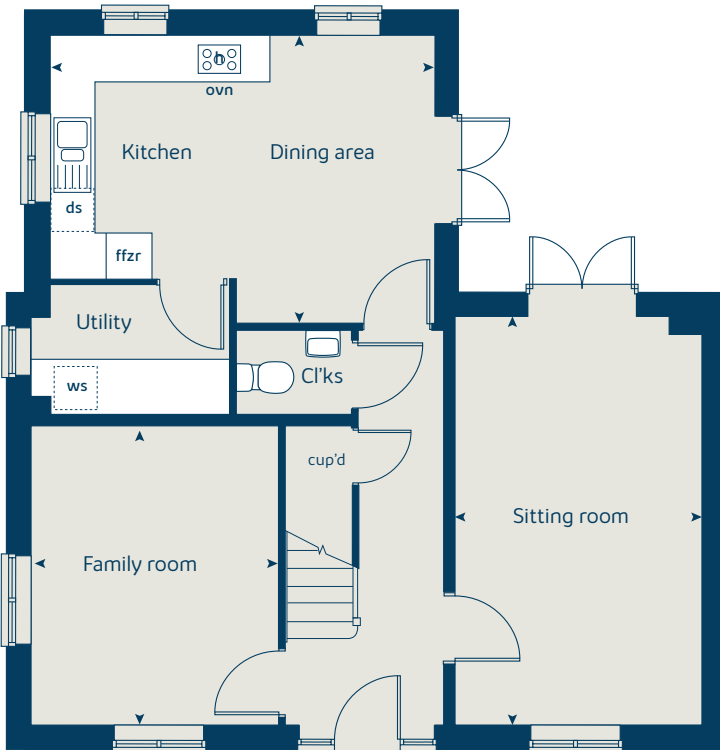
First floor	metres	feet / inches
Bedroom 1	3.20 x 2.98	10' 6" x 9' 9"
Bedroom 2	3.21 x 3.13	10' 6" x 10' 3"
Bedroom 3	3.62 x 2.79	11' 11" x 9' 2"
Bedroom 4	3.62 x 2.15	11' 11" x 7' 1"

h	hob	ws	washing machine space
ovn	oven	cup'd	cupboard
ffzr	fridge freezer	< >	measuring points
ds	dishwasher space		

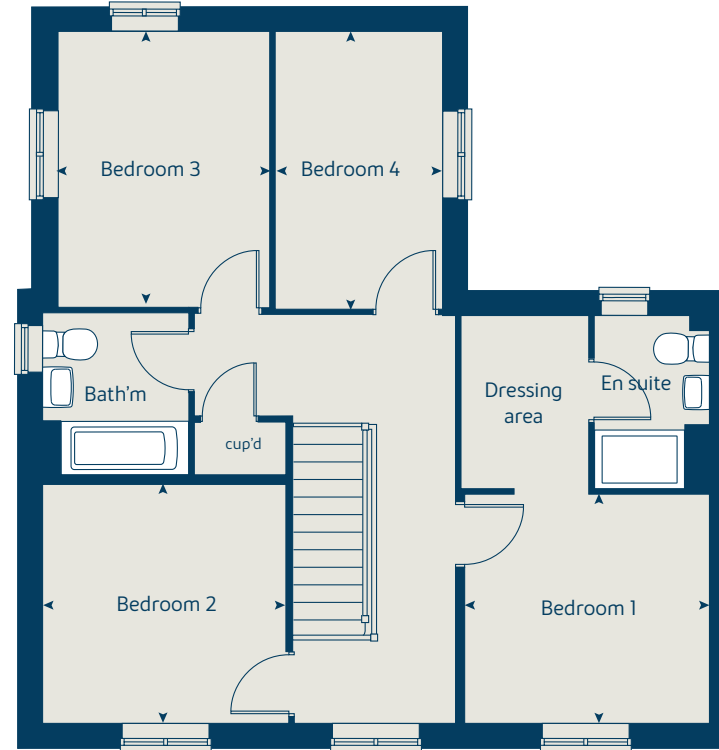
The Knightwood | CKN100 CBAND |
 The floorplan has been produced for illustrative purposes only. Room sizes shown are between arrow points as indicated on plan. The dimensions have tolerances of + or -50mm and should not be used other than for general guidance. If specific dimensions are required, enquiries should be made to the sales consultant. The floor plans shown are not to scale. Measurements are based on the original drawings. Slight variations may occur during construction.

The illustrations shown are computer generated impressions of how the property may look and are indicative only. External details or finishes may vary on individual plots and homes may be built in either detached or attached styles depending on the development layout. Exact specifications, window styles and whether a property is left or right-handed may differ from plot to plot. Please speak to our sales consultant for specific plot details.

Ground floor



First floor



The Chestnut

4 bedroom home

Floor area: 127 sq.m | 1,368 sq.ft

Ground floor	metres	feet / inches
Kitchen	3.91 x 3.04	12' 10" x 10' 0"
Dining / family area	4.59 x 2.96	15' 0" x 9' 9"
Sitting room	4.97 x 3.40	16' 4" x 11' 2"
Study	3.40 x 1.81	11' 2" x 5' 11"

First floor	metres	feet / inches
Bedroom 1	4.47 x 3.24	14' 8" x 10' 8"
Bedroom 2	3.43 x 3.36	11' 3" x 11' 0"
Bedroom 3	3.42 x 2.31	11' 3" x 7' 7"
Bedroom 4	3.20 x 2.35	10' 6" x 7' 8"

ovn	oven	ffzr	fridge freezer
h	hob	cup'd	cupboard
ws	washing machine space	ldr	larder
ds	dishwasher space	< >	measuring points

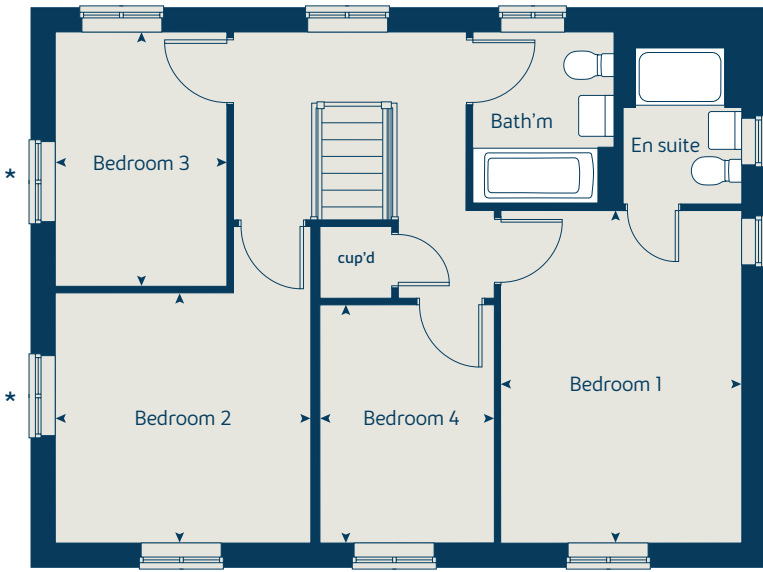
The Chestnut | X413 CBAND |
 The floorplan has been produced for illustrative purposes only. Room sizes shown are between arrow points as indicated on plan. The dimensions have tolerances of + or -50mm and should not be used other than for general guidance. If specific dimensions are required, enquiries should be made to the sales consultant. The floor plans shown are not to scale. Measurements are based on the original drawings. Slight variations may occur during construction.

The illustrations shown are computer generated impressions of how the property may look and are indicative only. External details or finishes may vary on individual plots and homes may be built in either detached or attached styles depending on the development layout. Exact specifications, window styles and whether a property is left or right-handed may differ from plot to plot. Please speak to our sales consultant for specific plot details.

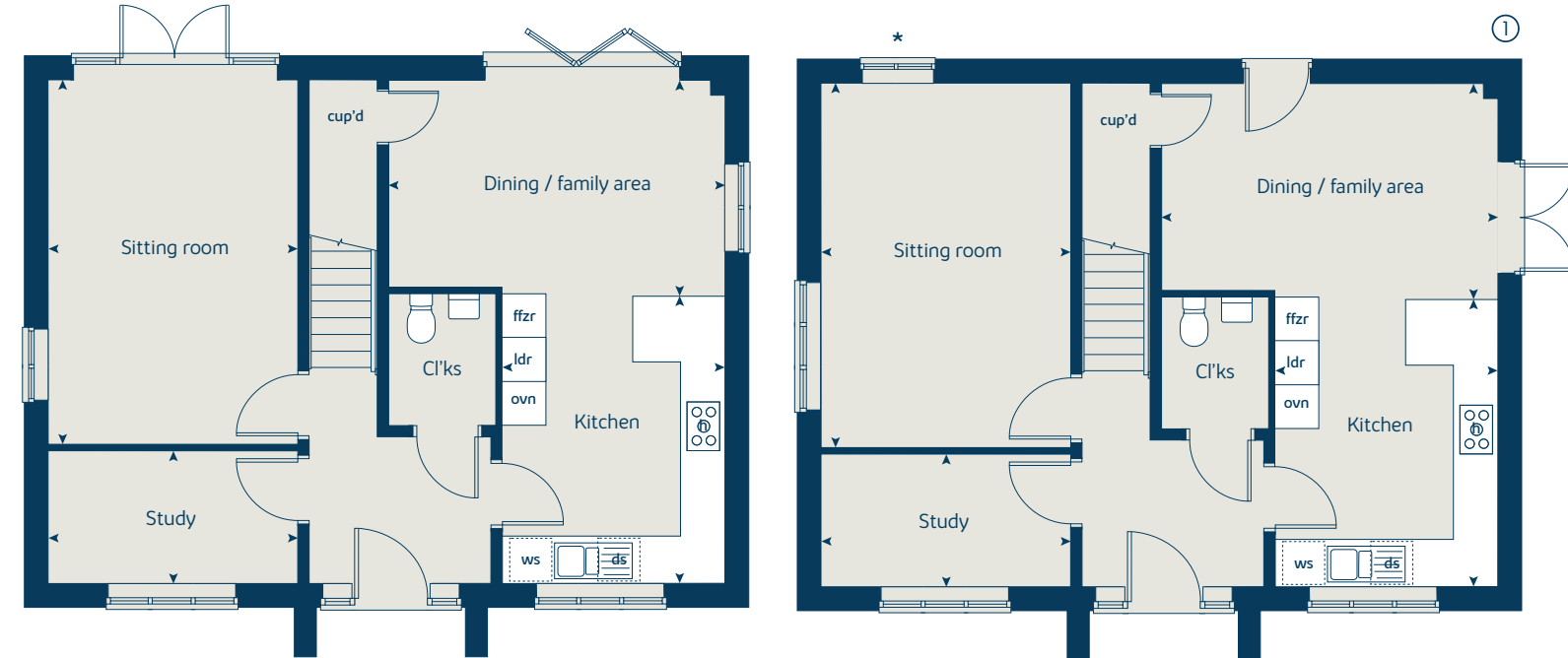
① Alternative layout to selected plots only. Please see sales consultant for further details.

* Windows apply to selected plots only. Please see sales consultant for further details.

First floor



Ground floor



The Mylnewood

4 bedroom home

Floor area: 105 sq.m | 1,136 sq.ft

Ground floor	metres	feet / inches
Kitchen / dining / family area	6.02 x 3.75	19' 9" x 12' 4"
Sitting room	4.83 x 3.39	15' 10" x 11' 2"

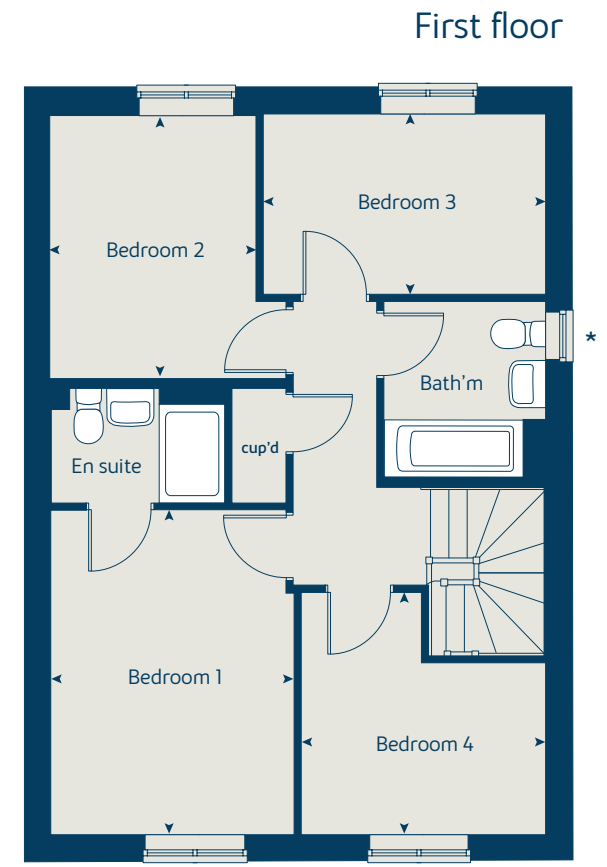
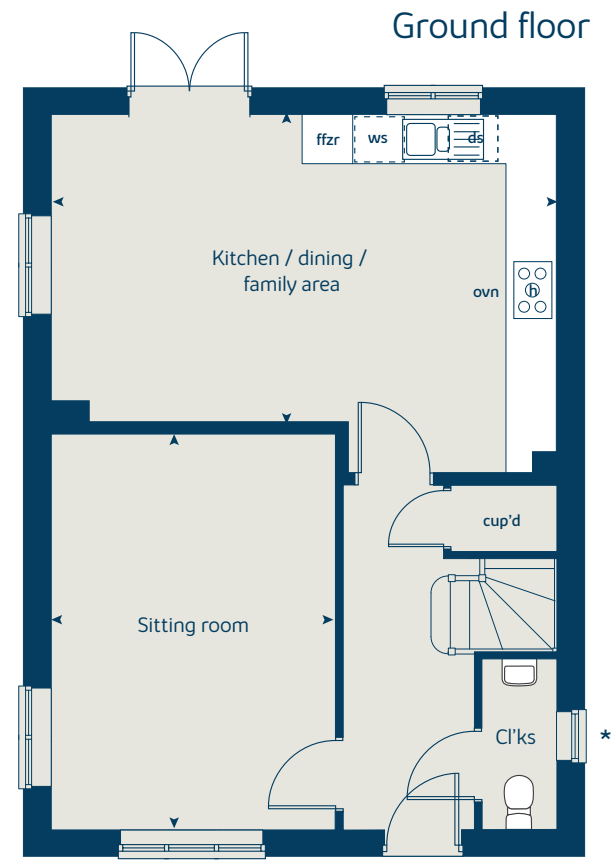
First floor	metres	feet / inches
Bedroom 1	3.93 x 2.95	12' 11" x 9' 8"
Bedroom 2	3.20 x 2.51	10' 6" x 8' 3"
Bedroom 3	3.43 x 2.18	11' 3" x 7' 2"
Bedroom 4	3.00 x 2.92	9' 10" x 9' 7"

h	hob	ws	washing machine space
ovn	oven	cup'd	cupboard
ffzr	fridge freezer	< >	measuring points
ds	dishwasher space		

The Mylnewood | L1136 CBAND |
 The floorplan has been produced for illustrative purposes only. Room sizes shown are between arrow points as indicated on plan. The dimensions have tolerances of + or -50mm and should not be used other than for general guidance. If specific dimensions are required, enquiries should be made to the sales consultant. The floor plans shown are not to scale. Measurements are based on the original drawings. Slight variations may occur during construction.

The illustrations shown are computer generated impressions of how the property may look and are indicative only. External details or finishes may vary on individual plots and homes may be built in either detached or attached styles depending on the development layout. Exact specifications, window styles and whether a property is left or right-handed may differ from plot to plot. Please speak to our sales consultant for specific plot details.

* Window applies to selected plots only. Please see sales consultant for further details.



The Attwood

3 bedroom home

Ground floor	metres	feet / inches
Kitchen / dining area	4.56 x 2.01	14' 11" x 6' 7"
Living room	4.08 x 2.74	13' 5" x 9' 0"

First floor	metres	feet / inches
Bedroom 2	4.08 x 2.82	13' 5" x 9' 3"
Bedroom 3	2.65 x 1.93	8' 8" x 6' 4"

Second floor	metres	feet / inches
Bedroom 1	4.46 x 3.70	14' 8" x 12' 2"
Bedroom 1*	4.07 x 3.46	13' 4" x 11' 4"

h	hob	ws	washing machine space
ovn	oven	cup'd	cupboard
ffzs	fridge freezer space	< >	measuring points
ds	dishwasher space		

The Attwood | V & V4 CBAND |

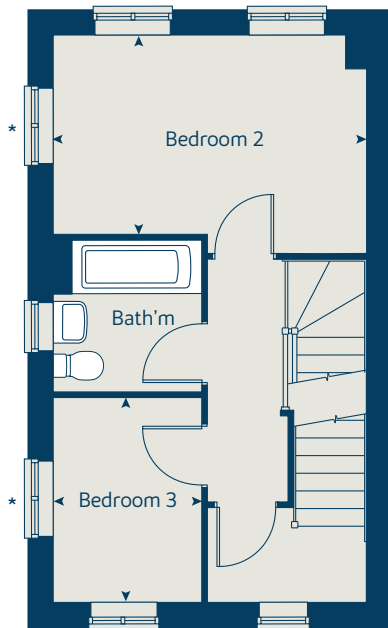
The floorplan has been produced for illustrative purposes only. Room sizes shown are between arrow points as indicated on plan. The dimensions have tolerances of + or -50mm and should not be used other than for general guidance. If specific dimensions are required, enquiries should be made to the sales consultant. The floor plans shown are not to scale. Measurements are based on the original drawings. Slight variations may occur during construction.

The illustrations shown are computer generated impressions of how the property may look and are indicative only. External details or finishes may vary on individual plots and homes may be built in either detached or attached styles depending on the development layout. Exact specifications, window styles and whether a property is left or right-handed may differ from plot to plot. Please speak to our sales consultant for specific plot details.

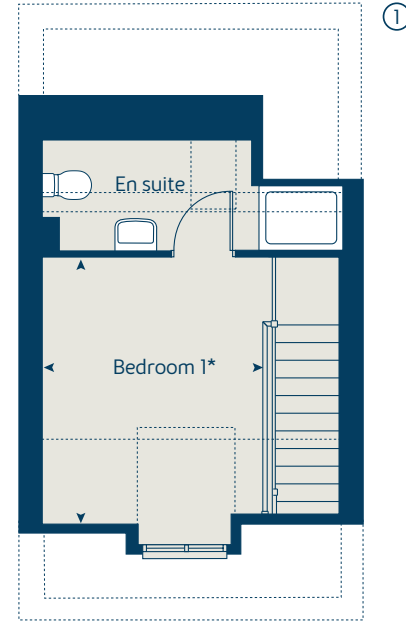
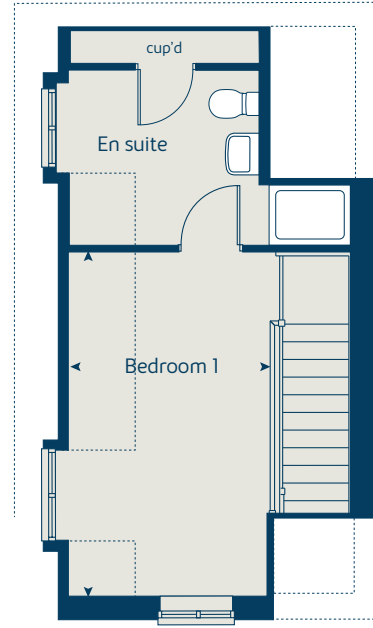
* Windows apply to selected plots only. Please speak to our sales consultant for further details.

① Alternative layout applies to selected plots only. Please speak to our sales consultant for further details.

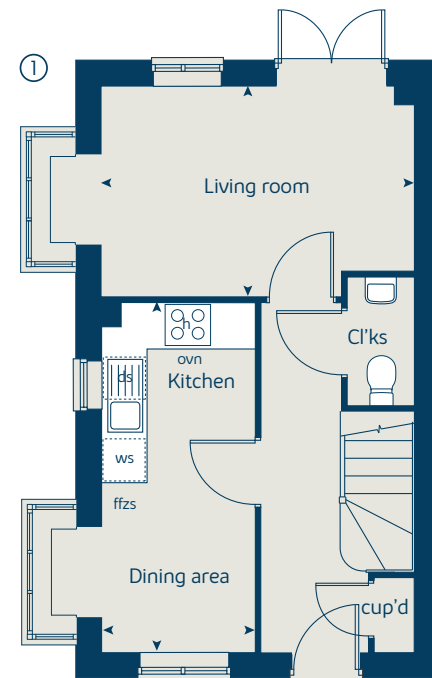
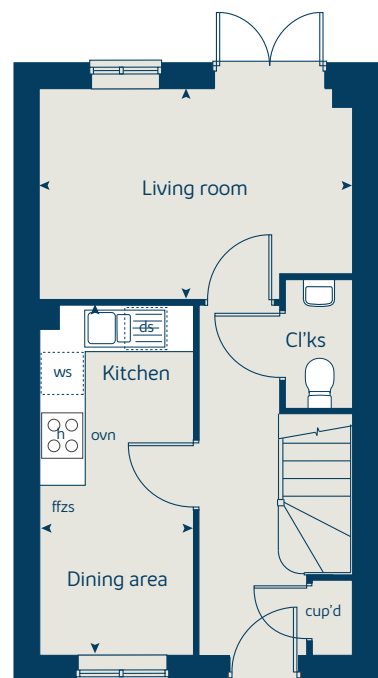
First floor



Second floor



Ground floor



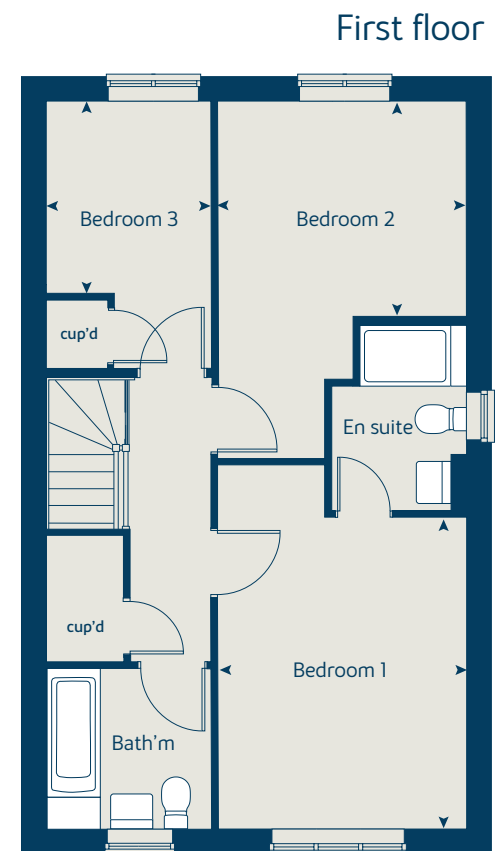
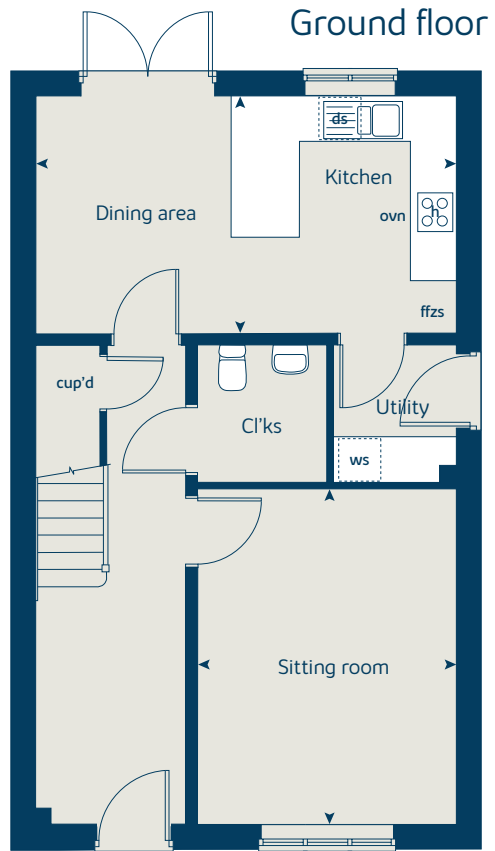
Floor area: 105 sq.m | 1,136 sq.ft



The Cypress

3 bedroom home

Floor area: 105 sq.m | 1,139 sq.ft



Ground floor	metres	feet / inches
Kitchen / dining area	5.52 x 3.13	18' 1" x 10' 3"
Sitting room	4.40 x 3.40	14' 5" x 11' 2"

First floor	metres	feet / inches
Bedroom 1	4.10 x 3.27	13' 5" x 10' 9"
Bedroom 2	3.27 x 2.82	10' 9" x 9' 3"
Bedroom 3	2.53 x 2.16	8' 3" x 7' 1"

ovn	oven	ffzs	fridge freezer space
h	hob	cup'd	cupboard
ds	dishwasher space	< >	measuring points
ws	washing machine space		

The Cypress | X308 (IF) 01 CBAND |
 The floorplan has been produced for illustrative purposes only. Room sizes shown are between arrow points as indicated on plan. The dimensions have tolerances of + or -50mm and should not be used other than for general guidance. If specific dimensions are required, enquiries should be made to the sales consultant. The floor plans shown are not to scale. Measurements are based on the original drawings. Slight variations may occur during construction.
 The illustrations shown are computer generated impressions of how the property may look and are indicative only. External details or finishes may vary on individual plots and homes may be built in either detached or attached styles depending on the development layout. Exact specifications, window styles and whether a property is left or right-handed may differ from plot to plot. Please speak to our sales consultant for specific plot details.



The Jasmine

3 bedroom home

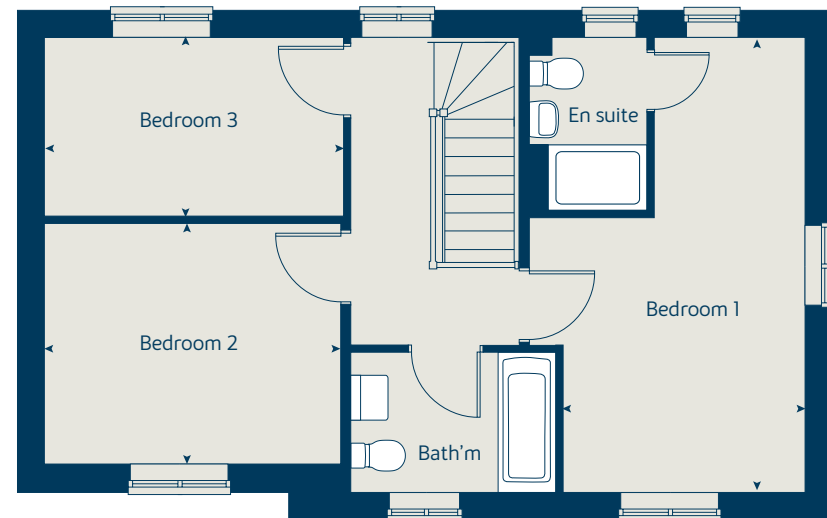
Ground floor	metres	feet / inches
Kitchen / dining area	5.52 x 3.36	18' 1" x 11' 0"
Sitting room	5.52 x 3.32	18' 1" x 10' 11"

First floor	metres	feet / inches
Bedroom 1	5.52 x 2.94	18' 1" x 9' 8"
Bedroom 2	3.59 x 2.93	11' 10" x 9' 7"
Bedroom 3	3.59 x 2.17	11' 10" x 7' 1"

ovn	oven	ffzs	fridge freezer space
h	hob	cup'd	cupboard
ds	dishwasher space	< >	measuring points
ws	washing machine space		

The Jasmine | X307 SE (IF) CBAND |
 The floorplan has been produced for illustrative purposes only. Room sizes shown are between arrow points as indicated on plan. The dimensions have tolerances of + or -50mm and should not be used other than for general guidance. If specific dimensions are required, enquiries should be made to the sales consultant. The floor plans shown are not to scale. Measurements are based on the original drawings. Slight variations may occur during construction.
 The illustrations shown are computer generated impressions of how the property may look and are indicative only. External details or finishes may vary on individual plots and homes may be built in either detached or attached styles depending on the development layout. Exact specifications, window styles and whether a property is left or right-handed may differ from plot to plot. Please speak to our sales consultant for specific plot details.

First floor



Ground floor



Floor area: 104 sq.m | 1,123 sq.ft



The Spruce

3 bedroom home

Floor area: 102 sq.m | 1,099 sq.ft

Ground floor	metres	feet / inches
Kitchen / dining area	5.52 x 3.14	18' 1" x 10' 4"
Sitting room	5.52 x 3.32	18' 1" x 10' 1"

First floor	metres	feet / inches
Bedroom 1	5.52 x 3.35	18' 1" x 11' 0"
Bedroom 2	3.59 x 3.26	11' 10" x 10' 9"
Bedroom 3	3.59 x 2.17	11' 10" x 7' 1"

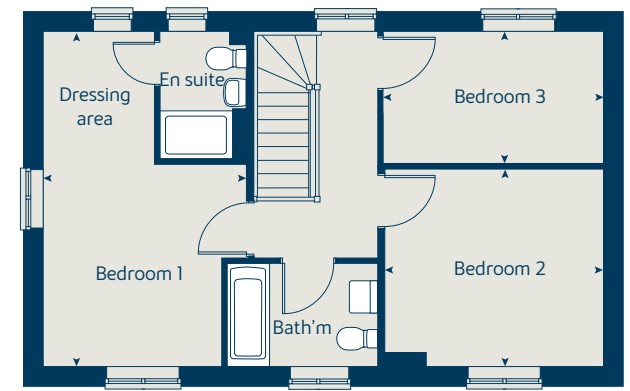
ovn	oven	ffzs	fridge freezer space
h	hob	cup'd	cupboard
ds	dishwasher space	<>	measuring points
ws	washing machine space		

The Spruce | X307 (IF) CBAND |
 The floorplan has been produced for illustrative purposes only. Room sizes shown are between arrow points as indicated on plan. The dimensions have tolerances of + or -50mm and should not be used other than for general guidance. If specific dimensions are required, enquiries should be made to the sales consultant. The floor plans shown are not to scale. Measurements are based on the original drawings. Slight variations may occur during construction.
 The illustrations shown are computer generated impressions of how the property may look and are indicative only. External details or finishes may vary on individual plots and homes may be built in either detached or attached styles depending on the development layout. Exact specifications, window styles and whether a property is left or right-handed may differ from plot to plot. Please speak to our sales consultant for specific plot details.

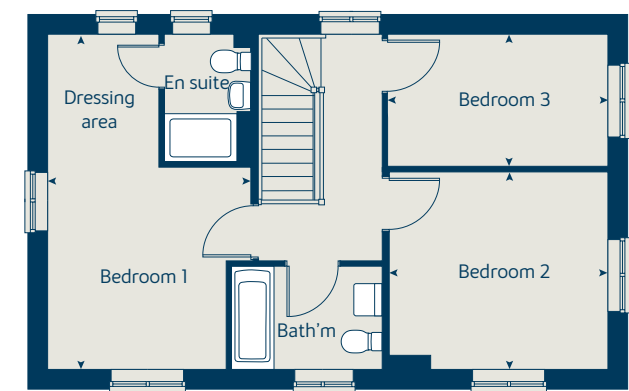
① Alternative layout applies to selected plots only. Please see sales consultant for further details.

* Window omitted to selected plots only. Please see sales consultant for further details.

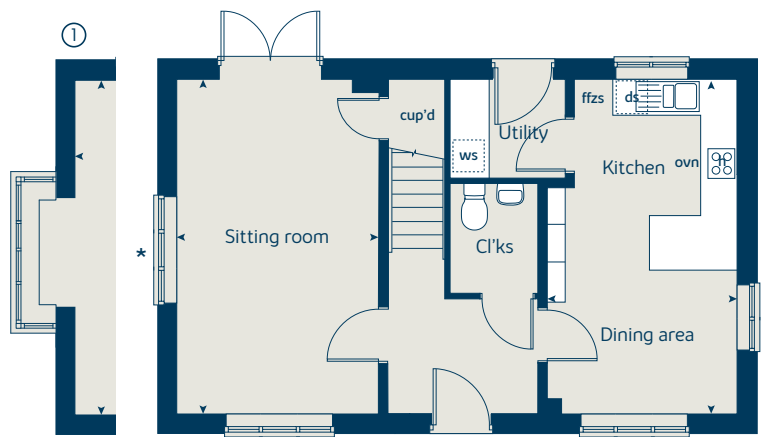
First floor



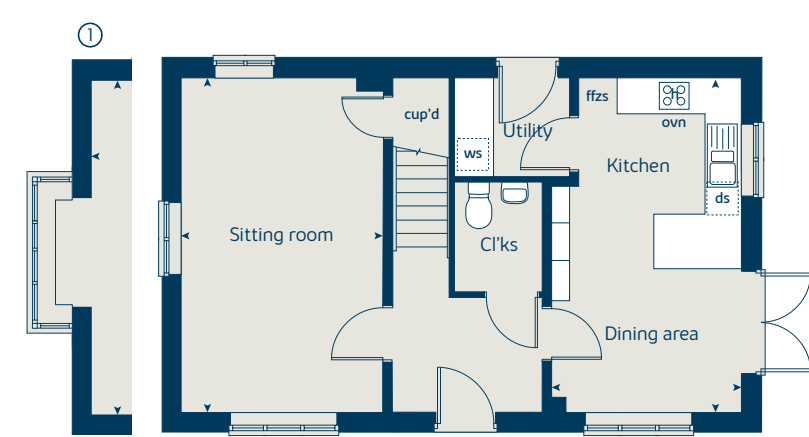
First floor to selected plots



Ground floor



Ground floor to selected plots



The Linwood

3 bedroom home

Ground floor	metres	feet / inches
Kitchen / dining area	4.76 x 2.80	15' 7" x 9' 2"
Living room	4.98 x 3.21	16' 4" x 10' 6"

First floor	metres	feet / inches
Bedroom 2	4.98 x 4.20	16' 4" x 13' 9"
Bedroom 3	3.77 x 2.77	12' 4" x 9' 1"

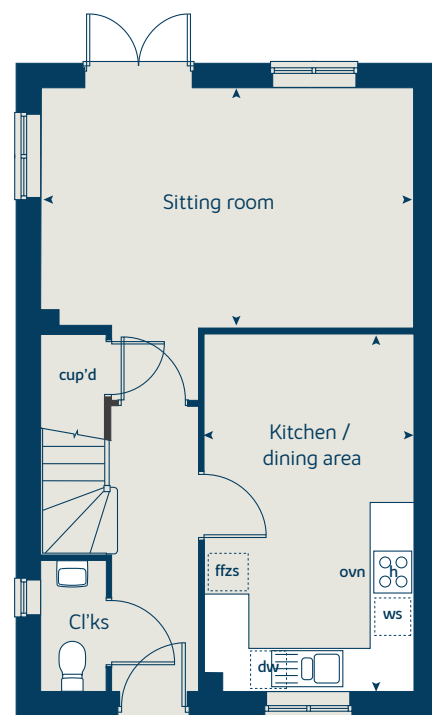
Second floor	metres	feet / inches
Bedroom 1	4.47 x 3.88	14' 1" x 12' 9"

h	hob	ds	dishwasher space
ovn	oven	cup'd	cupboard
ffzs	fridge freezer space	< >	measuring points
ws	washing machine space		

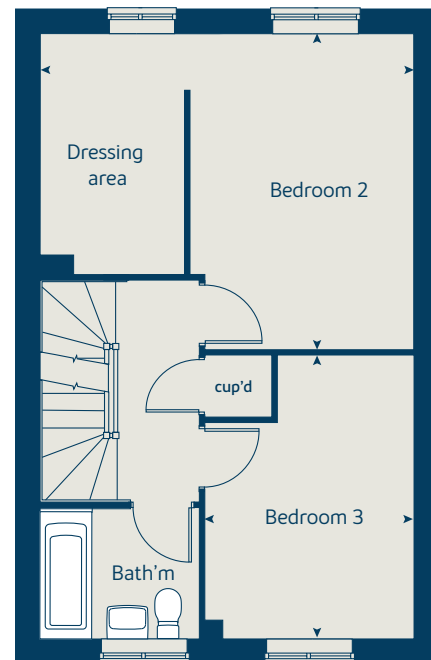
The Linwood | vt CBAND |
 The floorplan has been produced for illustrative purposes only. Room sizes shown are between arrow points as indicated on plan. The dimensions have tolerances of + or -50mm and should not be used other than for general guidance. If specific dimensions are required, enquiries should be made to the sales consultant. The floor plans shown are not to scale. Measurements are based on the original drawings. Slight variations may occur during construction.

The illustrations shown are computer generated impressions of how the property may look and are indicative only. External details or finishes may vary on individual plots and homes may be built in either detached or attached styles depending on the development layout. Exact specifications, window styles and whether a property is left or right-handed may differ from plot to plot. Please speak to our sales consultant for specific plot details.

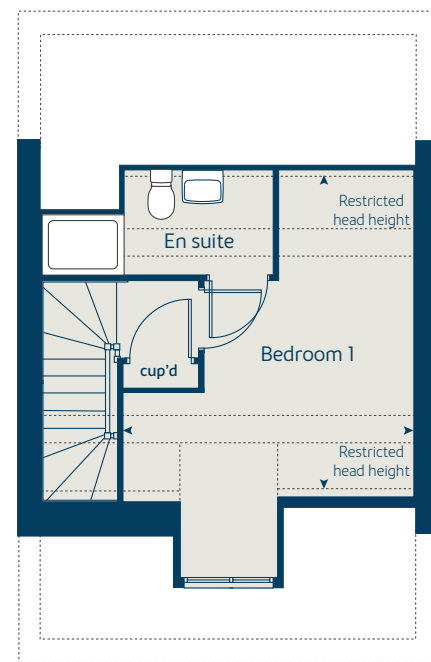
Ground floor



First floor



Second floor



Floor area: 102 sq.m | 1,105 sq.ft



The Mountwood

3 bedroom home

Ground floor	metres	feet / inches
Kitchen / dining area	5.59 x 2.70	18' 4" x 8' 10"
Sitting room	5.59 x 3.11	18' 4" x 10' 3"

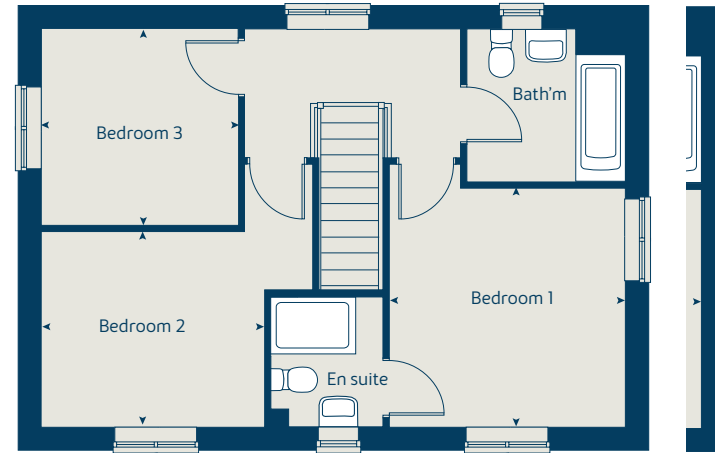
First floor	metres	feet / inches
Bedroom 1	3.41 x 3.17	11' 2" x 10' 5"
Bedroom 2	3.13 x 2.74	10' 3" x 9' 0"
Bedroom 3	2.76 x 2.75	9' 1" x 9' 0"

h	hob	ws	washing machine space
ovn	oven	cup'd	cupboard
ffzs	fridge freezer space	< >	measuring points
ds	dishwasher space		

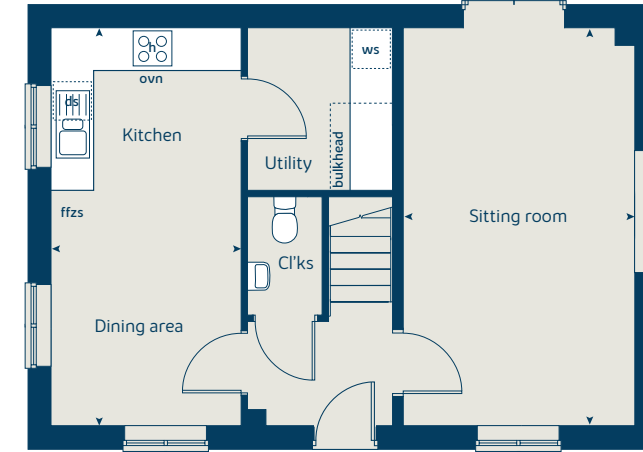
The Mountwood | CMOU01 CBAND |
 The floorplan has been produced for illustrative purposes only. Room sizes shown are between arrow points as indicated on plan. The dimensions have tolerances of + or -50mm and should not be used other than for general guidance. If specific dimensions are required, enquiries should be made to the sales consultant. The floor plans shown are not to scale. Measurements are based on the original drawings. Slight variations may occur during construction. The illustrations shown are computer generated impressions of how the property may look and are indicative only. External details or finishes may vary on individual plots and homes may be built in either detached or attached styles depending on the development layout. Exact specifications, window styles and whether a property is left or right-handed may differ from plot to plot. Please speak to our sales consultant for specific plot details.

- ① Alternative layout applies to selected plots only. Please speak to our sales consultant for further details.
- ② Alternative layout applies to selected plots only. Please speak to our sales consultant for further details.
- * Door omitted to selected plots only. Please see sales consultant for further details.
- ** Window omitted to selected plots only. Please see sales consultant for further details.

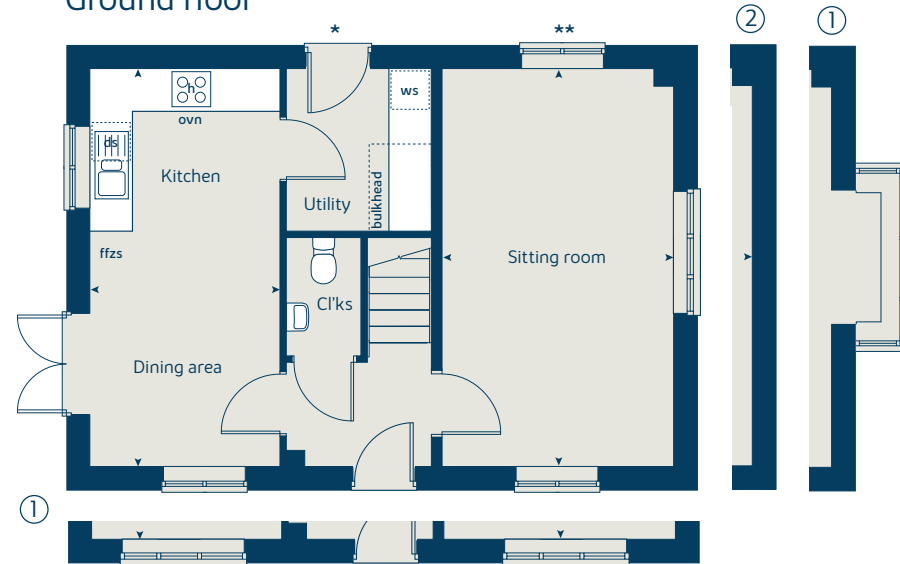
First floor



Ground floor to selected plots



Ground floor



Floor area: 90 sq.m | 970 sq.ft



The Rowtree

3 bedroom home

Floor area: 71 sq.m | 764 sq.ft

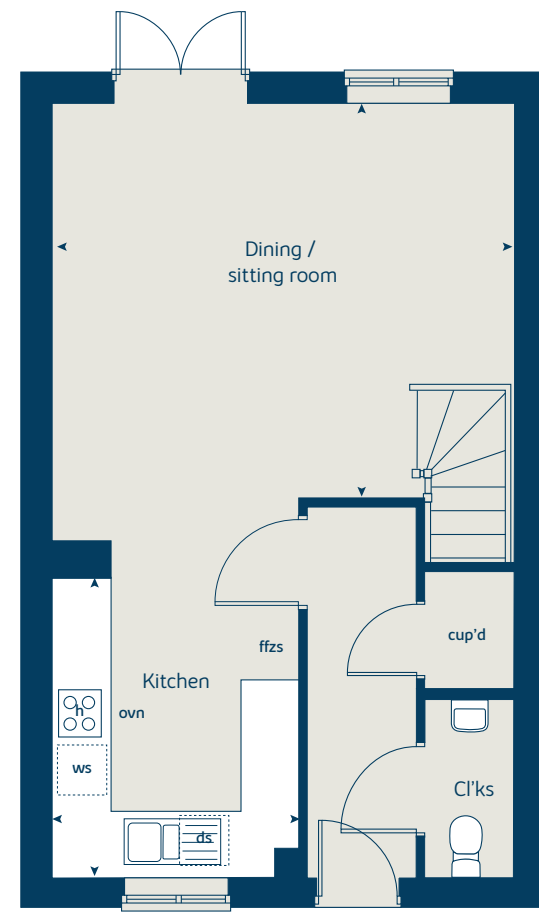
Ground floor	metres	feet / inches
Kitchen	2.79 x 2.55	9' 1" x 8' 4"
Sitting / dining room	4.77 x 3.80	15' 8" x 12' 6"

First floor	metres	feet / inches
Bedroom 1	2.72 x 2.59	8' 11" x 8' 6"
Bedroom 2	2.84 x 2.54	9' 4" x 8' 4"
Bedroom 3	2.59 x 1.97	8' 6" x 6' 6"

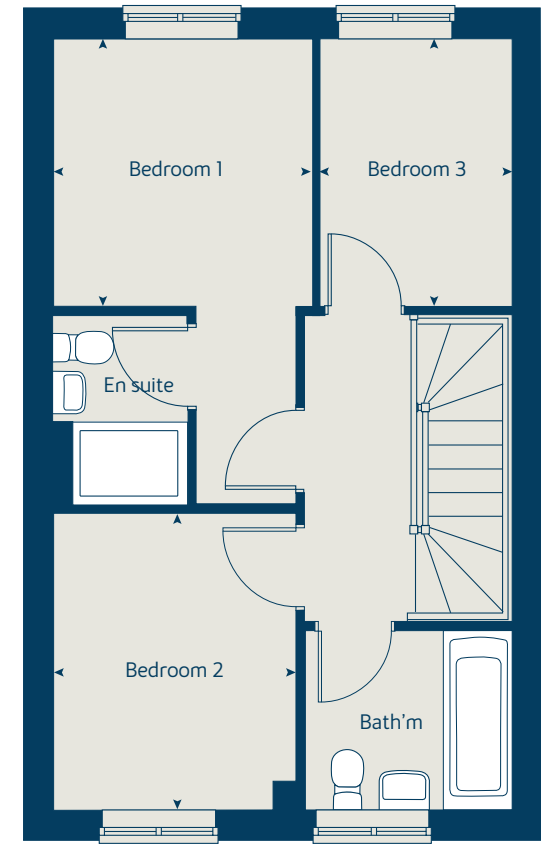
ovn	oven	ffzs	fridge freezer space
h	hob	cup'd	cupboard
ds	dishwasher space	< >	measuring points
ws	washing machine space		

The Rowtree | WM03 CBAND |
 The floorplan has been produced for illustrative purposes only. Room sizes shown are between arrow points as indicated on plan. The dimensions have tolerances of + or -50mm and should not be used other than for general guidance. If specific dimensions are required, enquiries should be made to the sales consultant. The floor plans shown are not to scale. Measurements are based on the original drawings. Slight variations may occur during construction.
 The illustrations shown are computer generated impressions of how the property may look and are indicative only. External details or finishes may vary on individual plots and homes may be built in either detached or attached styles depending on the development layout. Exact specifications, window styles and whether a property is left or right handed may differ from plot to plot. Please speak to our sales consultant for specific plot details.

Ground floor



First floor



The Holly

2 bedroom home

Floor area: 79 sq.m | 649 sq.ft

Ground floor	metres	feet / inches
Kitchen / dining room	4.72 x 3.24	15' 6" x 10' 8"
Sitting room	3.72 x 3.66	12' 2" x 12' 0"

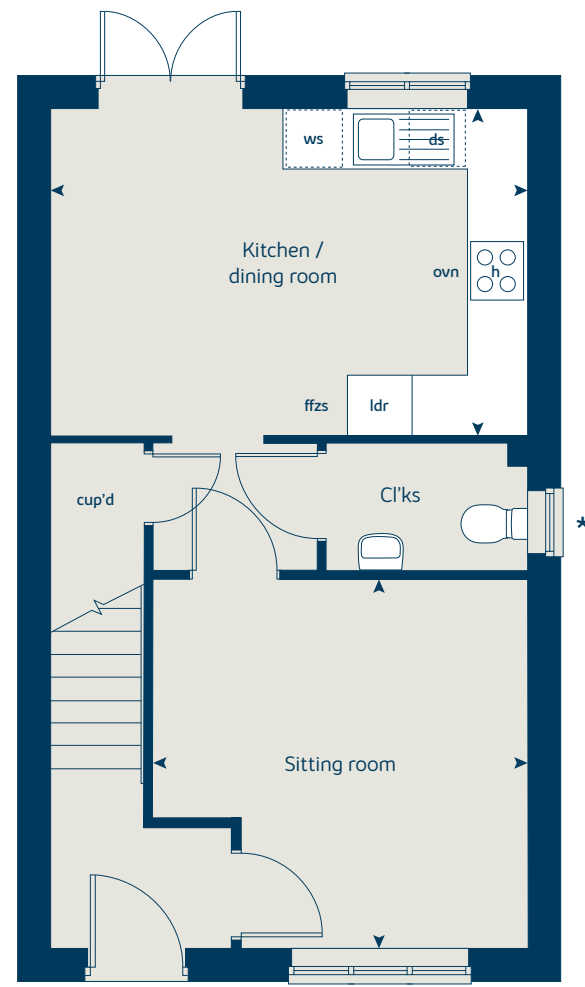
First floor	metres	feet / inches
Bedroom 1	3.59 x 3.20	11' 9" x 10' 6"
Bedroom 2	4.74 x 2.57	15' 6" x 8' 5"

ovn	oven	ldr	larder
h	hob	ffzs	fridge freezer space
ds	dishwasher space	cup'd	cupboard
ws	washing machine space	< >	measuring points

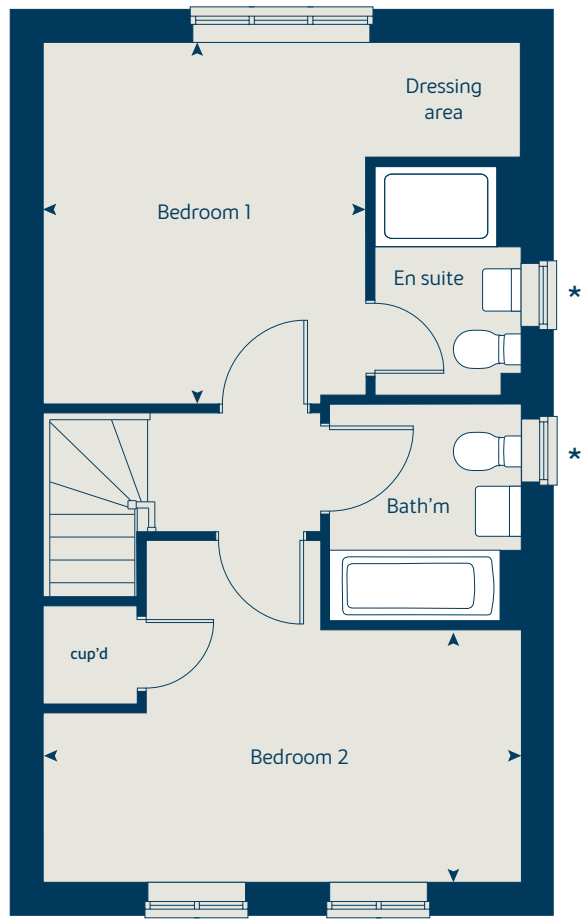
The Holly | X204 01 CBAND |
 The floorplan has been produced for illustrative purposes only. Room sizes shown are between arrow points as indicated on plan. The dimensions have tolerances of + or -50mm and should not be used other than for general guidance. If specific dimensions are required, enquiries should be made to the sales consultant. The floor plans shown are not to scale. Measurements are based on the original drawings. Slight variations may occur during construction.
 The illustrations shown are computer generated impressions of how the property may look and are indicative only. External details or finishes may vary on individual plots and homes may be built in either detached or attached styles depending on the development layout. Exact specifications, window styles and whether a property is left or right-handed may differ from plot to plot. Please speak to our sales consultant for specific plot details

* Windows apply to selected plots only. Please see sales consultant for further details.

Ground floor



First floor



The Ivy

2 bedroom
bungalow

V1 - Plots 136 & 137	metres	feet / inches
Kitchen	4.64 x 2.33	15' 3" x 7' 8"
Dining / sitting area	5.64 x 3.13	18' 6" x 10' 3"
Bedroom 1	4.33 x 3.70	14' 2" x 12' 2"
Bedroom 2	4.00 x 2.51	13' 1" x 8' 3"

V2 - Plots 135 & 138	metres	feet / inches
Kitchen / sitting area	4.62 x 4.56	15' 2" x 15' 0"
Dining area	3.39 x 1.65	11' 2" x 5' 5"
Bedroom 1	4.17 x 2.97	13' 8" x 9' 9"
Bedroom 2	3.39 x 3.37	11' 2" x 11' 1"

ovn	oven	ffzs	fridge freezer space
h	hob	cup'd	cupboard
ds	dishwasher space	◀ ▶	measuring points
ws	washing machine space		

The Ivy | P2BB CBAND |

The floorplan has been produced for illustrative purposes only. Room sizes shown are between arrow points as indicated on plan. The dimensions have tolerances of + or -50mm and should not be used other than for general guidance. If specific dimensions are required, enquiries should be made to the sales consultant. The floor plans shown are not to scale. Measurements are based on the original drawings. Slight variations may occur during construction.

The illustrations shown are computer generated impressions of how the property may look and are indicative only. External details or finishes may vary on individual plots and homes may be built in either detached or attached styles depending on the development layout. Exact specifications, window styles and whether a property is left or right handed may differ from plot to plot. Please speak to our sales consultant for specific plot details.

Ground floor v1



Ground floor v2



V1 Floor area: 71 sq.m | 773 sq.ft
V2 Floor area: 69 sq.m | 745 sq.ft



The Harwood

2 bedroom home

Floor area: 60 sq.m | 649 sq.ft

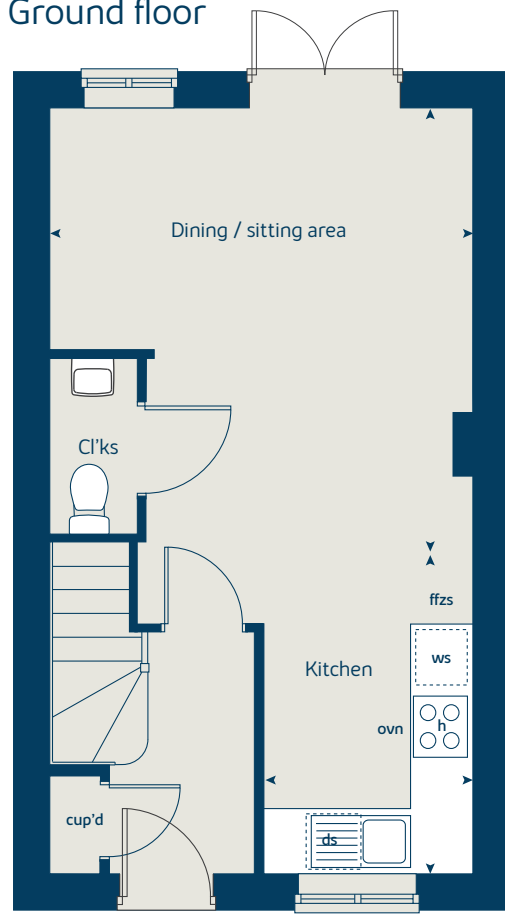
Ground floor	metres	feet / inches
Kitchen	3.15 x 1.93	10' 4" x 6' 4"
Dining / sitting area	4.08 x 4.23	13' 5" x 13' 1"

First floor	metres	feet / inches
Bedroom 1	4.08 x 2.83	13' 5" x 9' 3"
Bedroom 2	4.08 x 2.40	13' 5" x 7' 10"

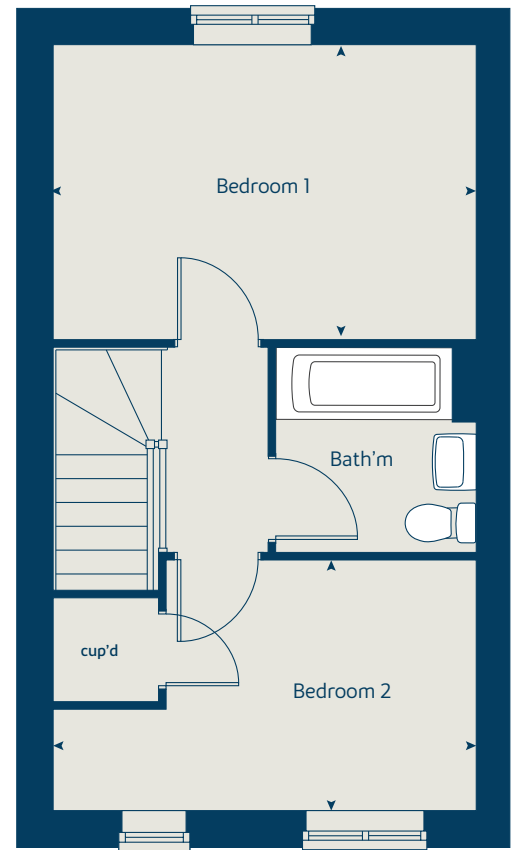
h	hob	ws	washing machine space
ovn	oven	cup'd	cupboard
ffzs	fridge freezer space	< >	measuring points
ds	dishwasher space		

The Harwood | CHAR01 CBAND |
 The floorplan has been produced for illustrative purposes only. Room sizes shown are between arrow points as indicated on plan. The dimensions have tolerances of + or -50mm and should not be used other than for general guidance. If specific dimensions are required, enquiries should be made to the sales consultant. The floor plans shown are not to scale. Measurements are based on the original drawings. Slight variations may occur during construction.
 The illustrations shown are computer generated impressions of how the property may look and are indicative only. External details or finishes may vary on individual plots and homes may be built in either detached or attached styles depending on the development layout. Exact specifications, window styles and whether a property is left or right-handed may differ from plot to plot. Please speak to our sales consultant for specific plot details.

Ground floor



First floor





Enhance and personalise your new home with upgrades and extras from our **Select** range

On top of the unique specification at Roman Fields, you can also use the Bovis Homes Select brochure to add even more finishing touches to your property and personalise your new home even more.

Customise your kitchen with stylish worktops and the latest modern appliances and personalise your bathrooms with stunning ceramics. Using the Select range there are various options allowing you to create your perfect property which is truly unique to you.

You can personalise every space in your home from kitchen cupboards and electrics to built in wardrobes and if you have a preference for flooring, you can select from our diverse range that includes luxurious carpets, ceramics and vinyl.

The availability of items is subject to the stage of build and can vary by development and housetype. Our sales consultants will be pleased to provide guidance.

Pick up a **Select** brochure from your sales consultant today to find an extensive list of items available. Such as:

- Quartz kitchen worktops
- Premium appliance packages
- Flooring
- Built-in Symphony wardrobes
- Upgraded tiling in main bathroom and en suite

The availability of items is subject to the stage of build and can vary by development and housetype. Our sales consultants will be pleased to provide you with a full brochure and guidance.

A home designed with you in mind

We are constantly reviewing our houses and ensuring they are everything that our customers want in a home. That's why we are proud to have developed and launched our new range of homes.

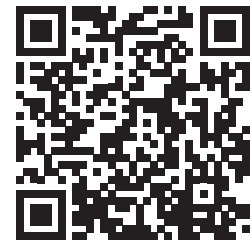
These homes have been created to embrace modern design and styling, whilst retaining the classic architectural traditions on which Bovis Homes has built its heritage and brand since 1885.

An integral part of the design process for our new range of homes was to ensure they have a real wow factor and eye-catching kerb appeal. From designing external elevations to create attractive street scenes through to maximising the flow and size of the rooms, the homes include a variety of features to capture the attention.

The size, positioning and number of windows in our new collection have created bright and airy homes, this mixed in with the higher ceilings gives your property a spacious feel.

The flow and layout of the new homes has been a key consideration to accommodate today's lifestyles, with a focus on future living. With the kitchen at the heart of the home, impressive family spaces have been included to create spacious, sociable living areas, while attention to master bedrooms and en suites has given the homes added desirability.

Scan me for directions



Roman Fields
Warwick Road, Banbury
OX16 1AR
01295 500371



Every care has been taken in the preparation of this brochure. Bovis Homes operates a programme of continuous product development. Features, internal and external, may vary from time to time and may differ from those shown in this brochure. The development layout, landscaping and tenure of all dwellings may be subject to change throughout the course of the development.

Computer generated images, maps, photography, and imagery are intended for illustrative purposes. Features, designs, materials, and visual depictions must be treated as general guidance only. Please speak to a sales consultant for details of specific homes.

South Central Midlands region, Bromwich Court, Highway Point, Gorsey Lane, Coleshill, Warwickshire B46 1JU. Telephone: 01675 437 000

Produced by the Vistry Group Design Studio. CBAND DS10554 / 07.24