

Artemis View Development update



Issue 1 | Spring 2024



Keeping you updated

We wanted to provide you with an update on the development and what you can expect from us over the coming months.

Overview

Overview of what's being built. In addition, the development will provide:

- Phase 4 consists of 290 homes (81 private sale & 209 affordable) as part of the wider development
- LEAP included within this phase
- Attenuation basin with public open space
- Photovoltaic panels to selected plots

Site activity

- Roads & Drainage installed.
- Plot work ongoing from foundation to superstructure.
- Services continue to be installed.

Specific item –

- Future phase of XXX apartments to commence construction Q2 2024
- Final phase to start design Q2 2024

Timeline

- Planning reference R/TH/15/0250
- We welcomed our first residents in November 2023
- Show homes are open and available for viewing.
- Local equipped area of play will available to the development soon

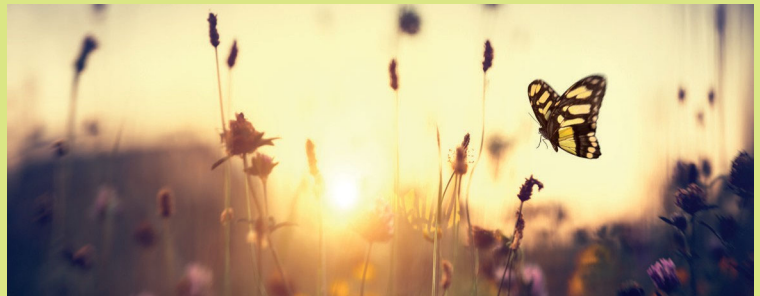


Managing agent

- As from 1st April Bovis Homes have appointed Gateway Property Management Ltd
- Head office located in Gateway House, 10 Coopers Way, Southend-on-Sea SS2 5T
- Development companies provide an essential service to ensure housing estates are well maintained – including roads, footpaths & communal green spaces.

Ecology

- We have installed a range of Ecological enhancements across the development including the planting of numerous new trees and planting.
- Hedgehog Highways installed across the site. This initiative is designed to allow hedgehogs to travel through purpose built gaps in the fences across the development



Services

New services via GTC

Fibre to premise via GTC

Development plan



How will the development benefit the local community?

Bovis Homes will also support the local community by contributing over **£5,161,510.00** towards:

- £3.1m to primary education
- Over £162,000 contribution to local libraries
- +£50,000 Adult Education
- +£230,000 in Health Contributions
- +£90,000 in Ecological Contributions
- Community Contributions of +£500,000

We will also be providing:

- Bus service contributions
- +£190,000 Social Care contributions
- Land to build secondary education facility
- Waste & Recycling

Please be aware that the dates and information provided are correct at time of print and are dependent on a number of factors, including weather, so are subject to change.

Thank you for your patience while the construction work is taking place. We try to keep disruption to a minimum but appreciate it can be noisy and dirty at times so do contact us if you have any questions, or if you'd like to provide any feedback, by emailing:

Thanet.sales@bovishomes.co.uk