



Whiteley Meadows

North Whiteley

A taste of local life

bovishomes.co.uk

**Bovis
Homes** 



Welcome to Whiteley Meadows

This impressive development is part of the exciting new community of North Whiteley in Hampshire, just ten miles from the vibrant coastal city of Portsmouth. North Whiteley will provide local schools, a nursery, community centres, playing fields and a wildlife corridor, as well as improved transport links to the nearby market town of Fareham and the M27.



At Whiteley Meadows, you can choose from a range of 1, 2, 3, 4 and 5 bedroom homes, all carefully designed to meet the needs of today's lifestyles. So if you're looking for a quality new home in a vibrant new Hampshire community, your search ends here.

Getting around

North Whiteley is just off the A3051, that leads north to the A334 and south towards Whiteley, just 3.5 miles away and Fareham, 10 miles. It's only 3.6 miles to Junction 9 of the M27 for Cosham 13 miles and Portsmouth, 14 miles, or head west on the A27 for Southampton a journey of 9 miles. It's less than 1.5 miles to Botley Railway Station which runs trains to London Waterloo in under 2 hours. Services also run to Cosham, Portsmouth and Southampton. For air travel Southampton Airport is only 9 miles and Heathrow is 67 miles.

A trip to the shops

You'll find a Co-op supermarket just 1.5 miles away in Botley and less than 4 miles away at Whiteley Shopping Centre there's a host of High Street brands including Boots, Fatface, M&S, WH Smith and Next. There's also a Tesco superstore and an M&S in Whiteley and a Waitrose in Park Gate. For more choice visit Fareham with its Shopping Centre, or take a city trip to Portsmouth where you can enjoy waterfront shopping at Gunwharf Quays that boasts 90 famous brands, or in the city centre visit Cascades Shopping Centre offering dozens of High Street names.

Taking time out

Relax, eat and drink at the riverside Horse and Jockey pub at Curbridge, or stroll through ancient woodland at Curbridge Nature Reserve. There are local clubs for cricket, football and golf, as well as swimming facilities. For health, gym and fitness try Whiteley's Meadowside Leisure Centre and if you love the water there's a choice of yacht and boat clubs beside the River Hamble. You can see latest blockbusters at Cineworld in Whiteley, and there's live theatre in Fareham and Hedge End. Portsmouth is perfect for day out with iconic attractions such as the Emirates Spinnaker Tower, the Historic Dockyard and The Mary Rose, as well as its art galleries, museums and medieval buildings. If you're a footie fan you can watch Southampton Football Club play at St Mary's Stadium.

Education

Whiteley Meadows will have its own nursery, primary and senior schools and there are also primary schools at Curbridge, Whiteley and Botley, catering for 5 to 10 year olds. Other senior schools in the area include Brookfield Community School and The Henry Cort Community College at Fareham and Fareham Academy, all catering for 11 to 16-year-olds. At Fareham College you can study A levels, apprenticeships and higher education.



Whiteley Meadows

North Whiteley,
Hampshire SO30 2HB

From Southampton

- Take the A3024 out of the city, crossing the River Itchen
- Continue for 4 miles to Kanes Hill Roundabout
- Take the 2nd exit onto A334 Charles Watts Way
- Continue on the A334 for approximately 3.5 miles
- At the top of Mill Hill, turn right onto the A3051
- Continue for just over a mile
- Whiteley Meadows can be found on your left hand side

From M27 East

- Leave the M27 at Junction 9
- Take the A27 to Fareham West/Whiteley
- At Parkway South Roundabout take the 1st exit onto Rookery Avenue
- At next roundabout take the 2nd exit to stay on Rookery Avenue
- Turn right onto Yew Tree Drive and continue for half a mile
- At the roundabout take the 3rd exit onto A3051 Botley Road
- Continue on the A3051 for nearly 2 miles
- Whiteley Meadows will be found on your right hand side



When you have finished with this leaflet please recycle it.

Cover photograph of River Hamble. Not view from the development. The streetscene shown above has been produced for illustrative purposes only, please check the details of the homes you are interested in with the sales advisor.

Bovis Homes Limited, Southern Counties region
Central 40, Lime Tree Way, Chineham Park, Basingstoke RG24 8GU Telephone: 01474 876 200

Produced by the Bovis Homes Graphic Design Department.
SNWHT GD51169 / 10.19

**Bovis
Homes** 

Whiteley Meadows

North Whiteley



2 bedroom home

- The Hawthorn
- The Elderberry

3 bedroom home

- The Hazel
- The Spruce
- The Cypress
- The Beech

4 bedroom home

- The Rosewood
- The Chestnut
- The Aspen
- Affordable housing

- v visitor space
- ss substation
- bcp bin collection point



The Elderberry

2 bedroom home

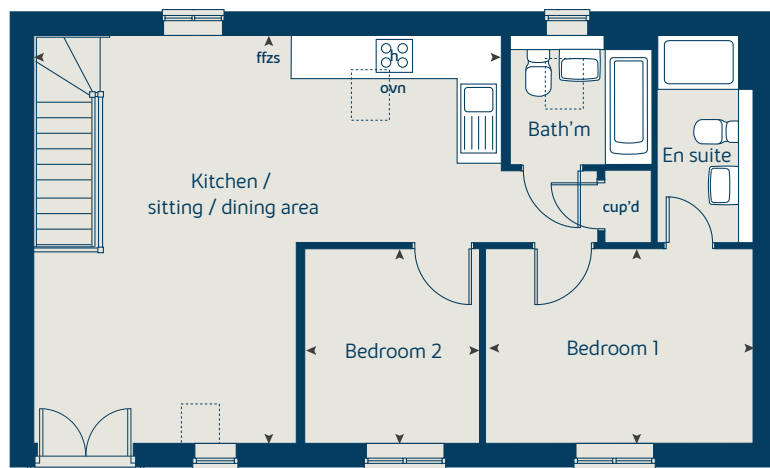
bovishomes.co.uk

**Bovis
Homes** 

The Elderberry

2 bedroom home

First floor



First floor	metres	feet / inches
Kitchen / sitting / dining area	6.93 x 6.04	22' 8" x 19' 9"
Bedroom 1	3.97 x 2.90	13' 1" x 9' 6"
Bedroom 2	2.90 x 2.58	9' 6" x 8' 6"

The Elderberry | GL1130 |

This floorplan has been produced for illustrative purposes only. Room sizes shown are between arrow points as indicated on plan. The dimensions have tolerances of + or -50mm and should not be used other than for general guidance. If specific dimensions are required, enquiries should be made to the sales consultant.

ovn	oven	cup'd	cupboard
h	hob	◀ ▶	measuring points
ffzs	fridge freezer space		

Please refer to the sales consultant for specific plot details as the illustrations shown are computer generated impressions of how the property may look so are indicative only. External details or finishes may vary on individual plots and homes may be built in either detached or attached styles depending on the development layout. Exact specifications, window styles and whether a property is left or right handed may differ from plot to plot.

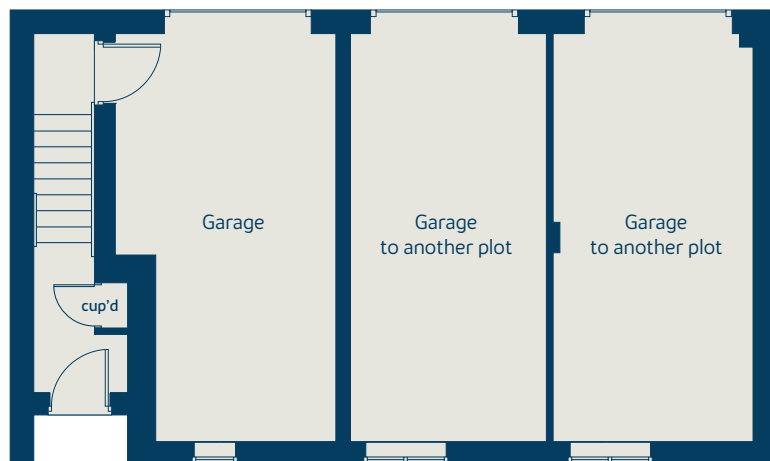
The floorplans shown are not to scale. Measurements are based on the original drawings. Slight variations may occur during construction.

Produced by the Vistry Group Design Studio.

When you have finished with this leaflet please recycle it.

GL1130 DS03347 / 10.22

Ground floor





The Hawthorn

2 bedroom home

bovishomes.co.uk

**Bovis
Homes** 

The Hawthorn

2 bedroom home

Ground floor	metres	feet / inches
Kitchen	3.78 x 2.92	12' 5" x 9' 7"
Sitting / dining area	4.07 x 3.99	13' 4" x 12' 5"

First floor

Bedroom 1	4.07 x 2.69	13' 4" x 8' 9"
Bedroom 2	4.07 x 2.82	13' 4" x 9' 3"

The Hawthorn | X203 02 GL1130 |

This floorplan has been produced for illustrative purposes only. Room sizes shown are between arrow points as indicated on plan. The dimensions have tolerances of + or -50mm and should not be used other than for general guidance. If specific dimensions are required, enquiries should be made to the sales consultant.

* Window applies to selected plots only. Please see sales consultant for further details.

ovn	oven	ffzs	fridge freezer space
h	hob	cup'd	cupboard
ds	dishwasher space	< >	measuring points
ws	washing machine space		

Please refer to the sales consultant for specific plot details as the illustrations shown are computer generated impressions of how the property may look so are indicative only. External details or finishes may vary on individual plots and homes may be built in either detached or attached styles depending on the development layout. Exact specifications, window styles and whether a property is left or right handed may differ from plot to plot.

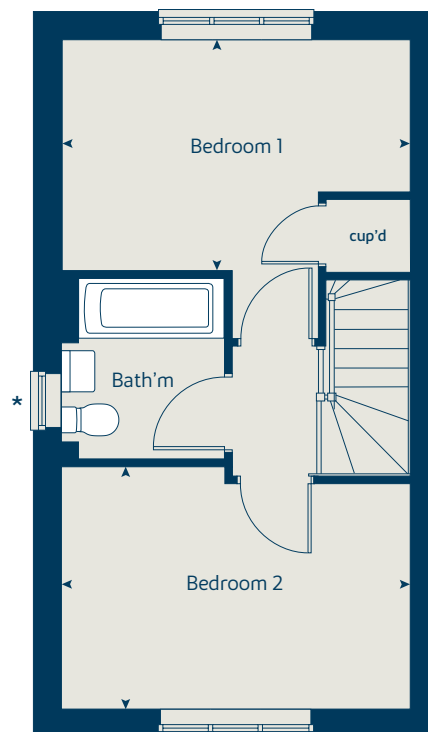
The floorplans shown are not to scale. Measurements are based on the original drawings. Slight variations may occur during construction.

Produced by the Vistry Group Design Studio.

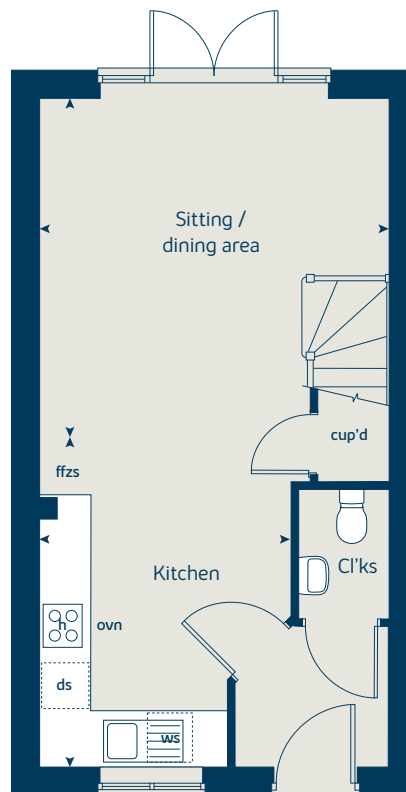
When you have finished with this leaflet please recycle it.

GL1130 DS03347 / 10.22

First floor



Ground floor





The Hazel

3 bedroom home

bovishomes.co.uk



The Hazel

3 bedroom home

Ground floor	metres	feet / inches
Kitchen / dining room	5.19 x 2.99	17' 0" x 9' 9"
Sitting room	4.17 x 3.66	13' 8" x 12' 0"

First floor

Bedroom 1	3.54 x 3.29	11' 7" x 9' 8"
Bedroom 2	2.95 x 2.72	9' 8" x 8' 11"
Bedroom 3	3.48 x 2.15	11' 5" x 7' 1"

The Hazel | X305 03 GL1130 |

This floorplan has been produced for illustrative purposes only. Room sizes shown are between arrow points as indicated on plan. The dimensions have tolerances of + or -50mm and should not be used other than for general guidance. If specific dimensions are required, enquiries should be made to the sales consultant.

ovn	oven	ffzs	fridge freezer space
h	hob	cup'd	cupboard
ds	dishwasher space	◀ ▶	measuring points
ws	washing machine space		

Please refer to the sales consultant for specific plot details as the illustrations shown are computer generated impressions of how the property may look so are indicative only. External details or finishes may vary on individual plots and homes may be built in either detached or attached styles depending on the development layout. Exact specifications, window styles and whether a property is left or right handed may differ from plot to plot.

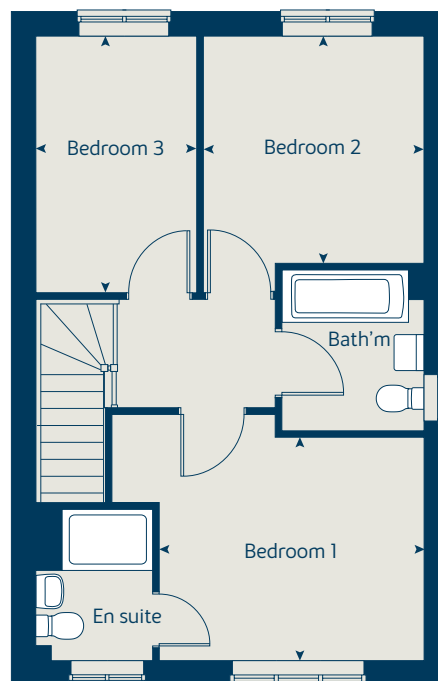
The floorplans shown are not to scale. Measurements are based on the original drawings. Slight variations may occur during construction.

Produced by the Vistry Group Design Studio.

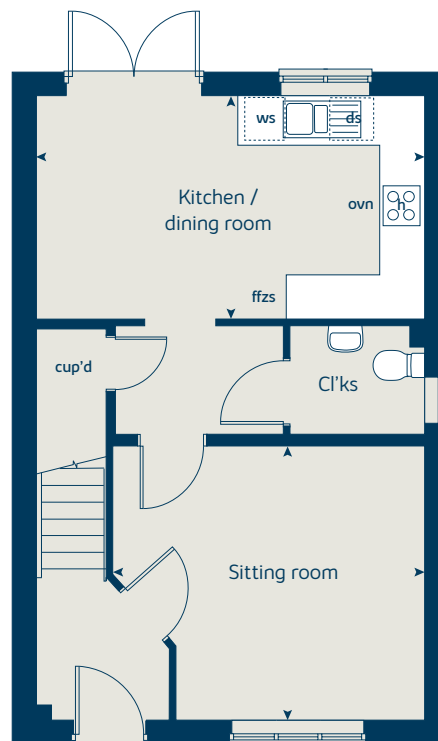
When you have finished with this leaflet please recycle it.

GL1130 DS03347 / 10.22

First floor



Ground floor





The Spruce

3 bedroom home

bovishomes.co.uk

**Bovis
Homes** 

The Spruce

3 bedroom home

Ground floor	metres	feet / inches
Kitchen	3.16 x 2.69	10' 4" x 8' 10"
Dining area	3.14 x 2.30	10' 3" x 7' 6"
Sitting room	5.53 x 3.32	18' 1" x 10' 10"

First floor

Bedroom 1	3.39 x 3.33	11' 1" x 10' 11"
Bedroom 2	3.61 x 3.18	11' 10" x 10' 5"
Bedroom 3	3.61 x 2.25	11' 10" x 7' 4"

The Spruce | X307 (IF) 01 GL1130 |

This floorplan has been produced for illustrative purposes only. Room sizes shown are between arrow points as indicated on plan. The dimensions have tolerances of + or -50mm and should not be used other than for general guidance. If specific dimensions are required, enquiries should be made to the sales consultant.

* Windows apply to selected plots only. Please see sales consultant for further details.

ovn	oven	ffzs	fridge freezer space
h	hob	cup'd	cupboard
ds	dishwasher space	w	wardrobe
ws	washing machine space	◀ ▶	measuring points

Please refer to the sales consultant for specific plot details as the illustrations shown are computer generated impressions of how the property may look so are indicative only. External details or finishes may vary on individual plots and homes may be built in either detached or attached styles depending on the development layout. Exact specifications, window styles and whether a property is left or right handed may differ from plot to plot.

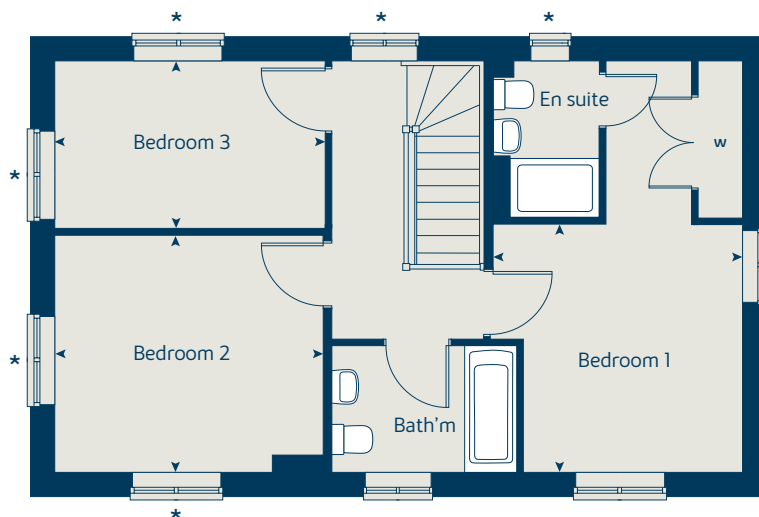
The floorplans shown are not to scale. Measurements are based on the original drawings. Slight variations may occur during construction.

Produced by the Vistry Group Design Studio.

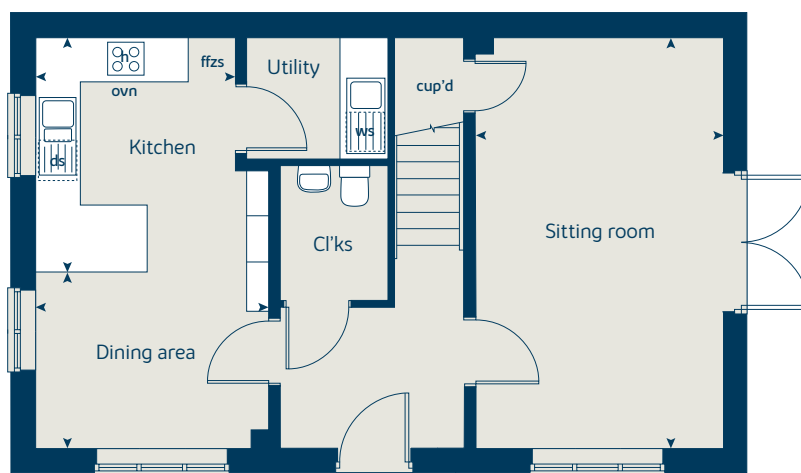
When you have finished with this leaflet please recycle it.

GL1130 DS03347 / 10.22

First floor



Ground floor





The Cypress

3 bedroom home

bovishomes.co.uk

**Bovis
Homes** 

The Cypress

3 bedroom home

Ground floor	metres	feet / inches
Kitchen / dining area	5.52 x 3.12	18' 1" x 10' 2"
Sitting room	4.33 x 3.40	14' 2" x 11' 1"

First floor

Bedroom 1	3.28 x 2.77	10' 9" x 9' 1"
Bedroom 2	4.09 x 3.28	13' 5" x 10' 9"
Bedroom 3	3.54 x 2.16	11' 7" x 7' 1"

The Cypress | X308 (IF) 01 GL1130 |

This floorplan has been produced for illustrative purposes only. Room sizes shown are between arrow points as indicated on plan. The dimensions have tolerances of + or -50mm and should not be used other than for general guidance. If specific dimensions are required, enquiries should be made to the sales consultant.

ovn	oven	ffzs	fridge freezer space
h	hob	cup'd	cupboard
ds	dishwasher space	◀ ▶	measuring points
ws	washing machine space		

Please refer to the sales consultant for specific plot details as the illustrations shown are computer generated impressions of how the property may look so are indicative only. External details or finishes may vary on individual plots and homes may be built in either detached or attached styles depending on the development layout. Exact specifications, window styles and whether a property is left or right handed may differ from plot to plot.

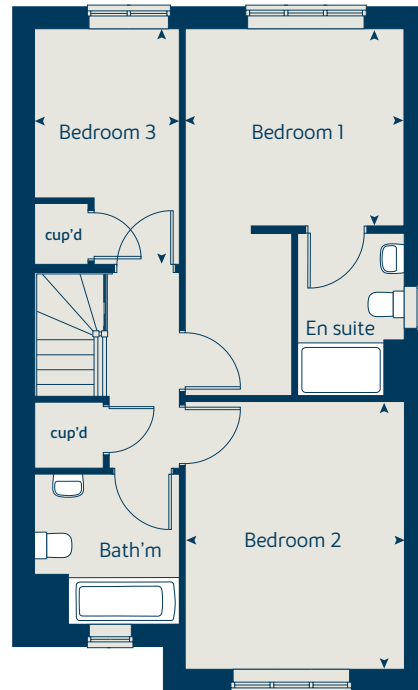
The floorplans shown are not to scale. Measurements are based on the original drawings. Slight variations may occur during construction.

Produced by the Vistry Group Design Studio.

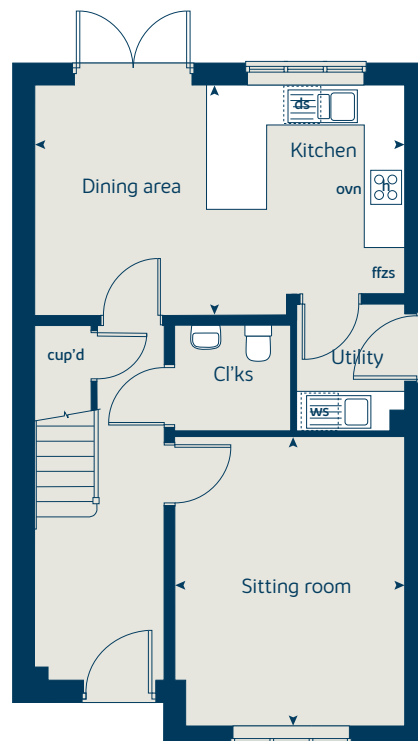
When you have finished with this leaflet please recycle it.

GL1130 DS03347 / 10.22

First floor



Ground floor





The Beech

3 bedroom home

bovishomes.co.uk



The Beech

3 bedroom home

Ground floor	metres	feet / inches
Kitchen / dining room	4.74 x 2.93	15' 6" x 9' 7"
Sitting room	4.00 x 3.72	13' 1" x 12' 2"

First floor	metres	feet / inches
Bedroom 2	4.74 x 2.62	15' 6" x 8' 6"
Bedroom 3	3.39 x 2.49	11' 1" x 8' 2"

Second floor	metres	feet / inches
Bedroom 1	4.74 x 4.06	15' 6" x 13' 3"

The Beech | X309 01 GL1130 |

This floorplan has been produced for illustrative purposes only. Room sizes shown are between arrow points as indicated on plan. The dimensions have tolerances of + or -50mm and should not be used other than for general guidance. If specific dimensions are required, enquiries should be made to the sales consultant.

ovn	oven	ffzs	fridge freezer space
h	hob	cup'd	cupboard
ds	dishwasher space	< >	measuring points
ws	washing machine space		

Please refer to the sales consultant for specific plot details as the illustrations shown are computer generated impressions of how the property may look so are indicative only. External details or finishes may vary on individual plots and homes may be built in either detached or attached styles depending on the development layout. Exact specifications, window styles and whether a property is left or right handed may differ from plot to plot.

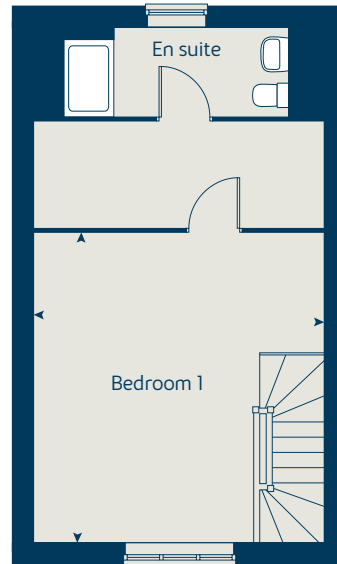
The floorplans shown are not to scale. Measurements are based on the original drawings. Slight variations may occur during construction.

Produced by the Vistry Group Design Studio.

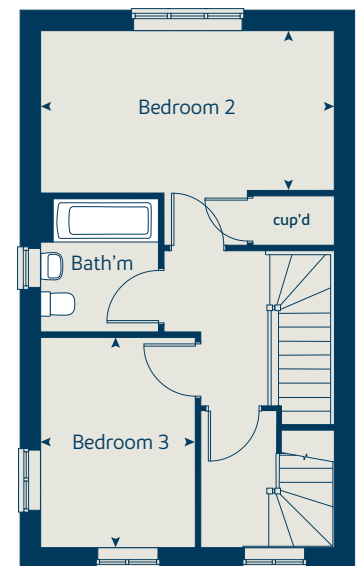
When you have finished with this leaflet please recycle it.

GL1130 DS03347 / 10.22

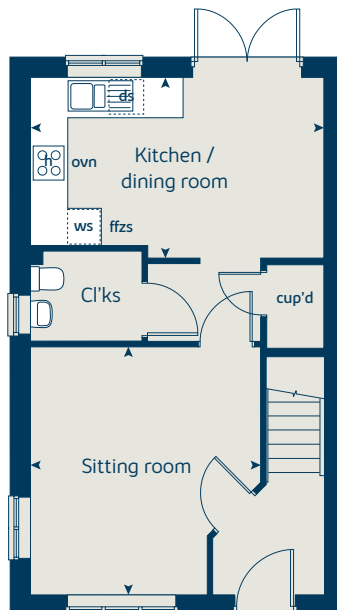
Second floor



First floor



Ground floor





The Beech

3 bedroom home

bovishomes.co.uk



The Beech

3 bedroom home

Ground floor	metres	feet / inches
Kitchen / dining room	4.74 x 2.93	15' 6" x 9' 7"
Sitting room	4.00 x 3.72	13' 1" x 12' 2"

First floor	metres	feet / inches
Bedroom 2	4.74 x 2.62	15' 6" x 8' 6"
Bedroom 3	3.39 x 2.49	11' 1" x 8' 2"

Second floor	metres	feet / inches
Bedroom 1	4.74 x 4.06	15' 6" x 13' 3"

The Beech | X309 01 GL1130 |

This floorplan has been produced for illustrative purposes only. Room sizes shown are between arrow points as indicated on plan. The dimensions have tolerances of + or -50mm and should not be used other than for general guidance. If specific dimensions are required, enquiries should be made to the sales consultant.

ovn	oven	ffzs	fridge freezer space
h	hob	cup'd	cupboard
ds	dishwasher space	< >	measuring points
ws	washing machine space		

Please refer to the sales consultant for specific plot details as the illustrations shown are computer generated impressions of how the property may look so are indicative only. External details or finishes may vary on individual plots and homes may be built in either detached or attached styles depending on the development layout. Exact specifications, window styles and whether a property is left or right handed may differ from plot to plot.

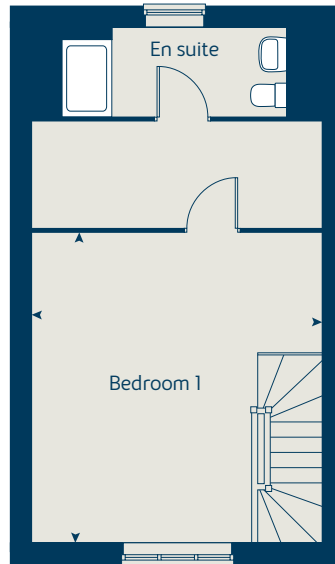
The floorplans shown are not to scale. Measurements are based on the original drawings. Slight variations may occur during construction.

Produced by the Vistry Group Design Studio.

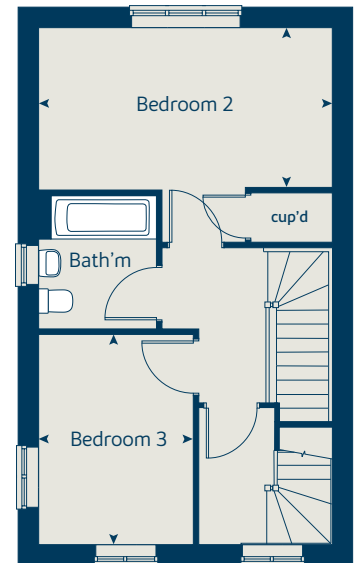
When you have finished with this leaflet please recycle it.

GL1130 DS03347 / 10.22

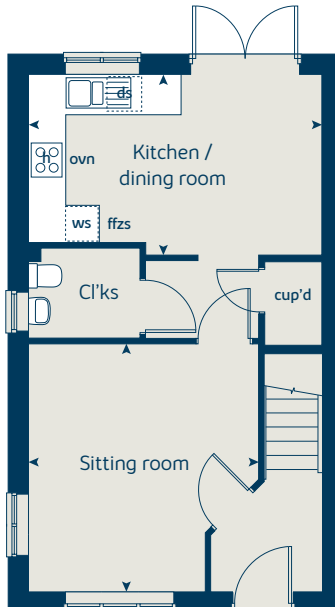
Second floor



First floor



Ground floor





The Rosewood

4 bedroom home

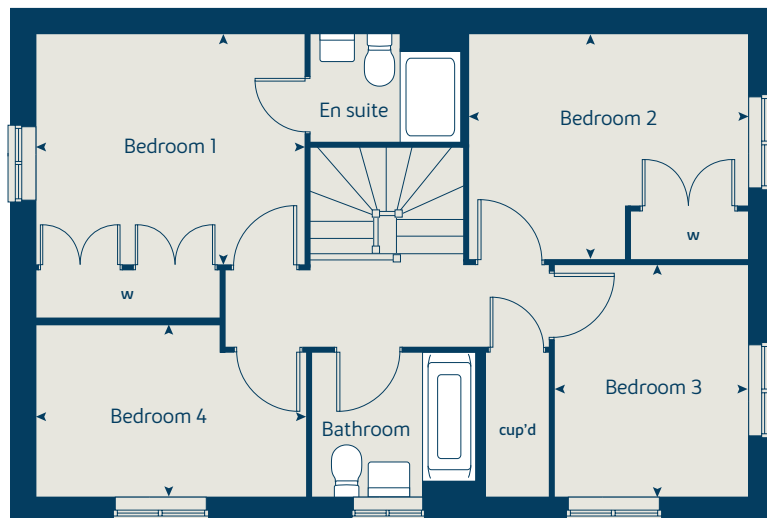
bovishomes.co.uk

**Bovis
Homes** 

The Rosewood

4 bedroom home

First floor



Ground floor	metres	feet / inches
Kitchen / dining area	6.09 x 3.59	20' 0" x 11' 9"
Sitting room	6.09 x 3.46	20' 0" x 11' 4"

First floor

Bedroom 1	3.53 x 2.96	11' 7" x 9' 9"
Bedroom 2	3.64 x 2.96	11' 11" x 9' 9"
Bedroom 2	3.44 x 3.05	11' 4" x 10' 0"
Bedroom 3	3.55 x 2.30	11' 6" x 7' 5"

The Rosewood | GL1130 |

This floorplan has been produced for illustrative purposes only. Room sizes shown are between arrow points as indicated on plan. The dimensions have tolerances of + or -50mm and should not be used other than for general guidance. If specific dimensions are required, enquiries should be made to the sales consultant.

ovn	oven	ffzs	fridge freezer space
h	hob	w	wardrobe
ds	dishwasher space	cup'd	cupboard
ws	washing machine space	< >	measuring points

Please refer to the sales consultant for specific plot details as the illustrations shown are computer generated impressions of how the property may look so are indicative only. External details or finishes may vary on individual plots and homes may be built in either detached or attached styles depending on the development layout. Exact specifications, window styles and whether a property is left or right handed may differ from plot to plot.

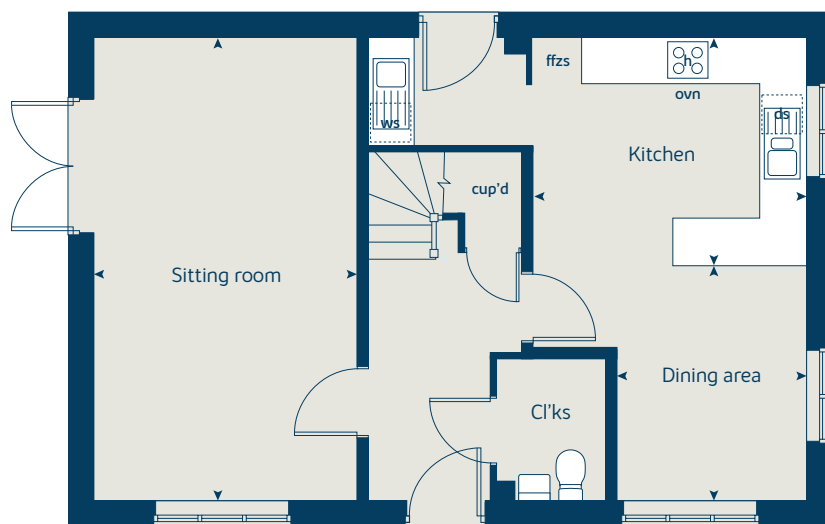
The floorplans shown are not to scale. Measurements are based on the original drawings. Slight variations may occur during construction.

Produced by the Vistry Group Design Studio.

When you have finished with this leaflet please recycle it.

GL1130 DS03347 / 10.22

Ground floor





The Chestnut

4 bedroom home

bovishomes.co.uk

**Bovis
Homes** 

The Chestnut

4 bedroom home

Ground floor	metres	feet / inches
Kitchen	4.03 x 3.04	13' 2" x 9' 11"
Dining / family area	4.59 x 2.85	15' 0" x 9' 4"
Sitting room	4.98 x 3.40	16' 4" x 11' 1"
Study	3.40 x 1.81	11' 1" x 5' 11"

First floor

Bedroom 1	3.24 x 2.98	10' 7" x 9' 8"
Bedroom 2	3.48 x 3.36	11' 5" x 11' 0"
Bedroom 3	3.25 x 2.35	10' 7" x 7' 8"
Bedroom 4	3.42 x 2.34	11' 2" x 7' 8"

The Chestnut | X413 01 GL1130 |

This floorplan has been produced for illustrative purposes only. Room sizes shown are between arrow points as indicated on plan. The dimensions have tolerances of + or -50mm and should not be used other than for general guidance. If specific dimensions are required, enquiries should be made to the sales consultant.

ovn	oven	ffzr	fridge freezer
h	hob	w	wardrobe
ds	dishwasher space	cup'd	cupboard
ws	washing machine space	<>	measuring points
ldr	larder		

Please refer to the sales consultant for specific plot details as the illustrations shown are computer generated impressions of how the property may look so are indicative only. External details or finishes may vary on individual plots and homes may be built in either detached or attached styles depending on the development layout. Exact specifications, window styles and whether a property is left or right handed may differ from plot to plot.

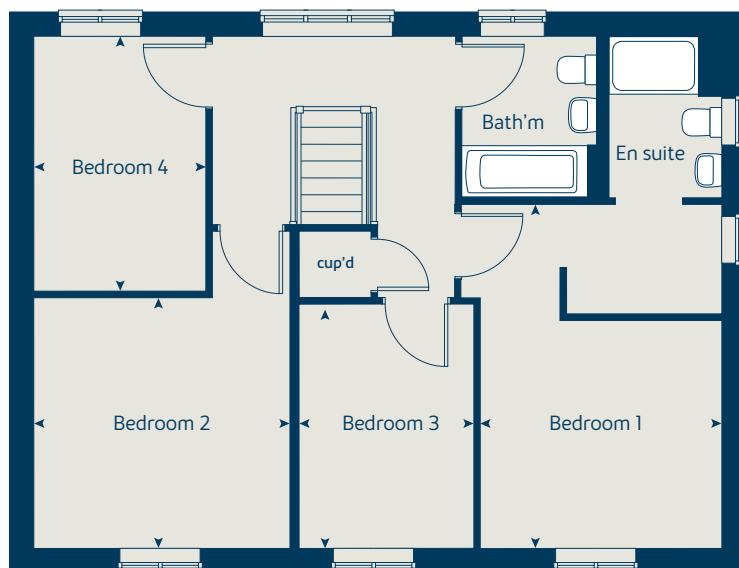
The floorplans shown are not to scale. Measurements are based on the original drawings. Slight variations may occur during construction.

Produced by the Vistry Group Design Studio.

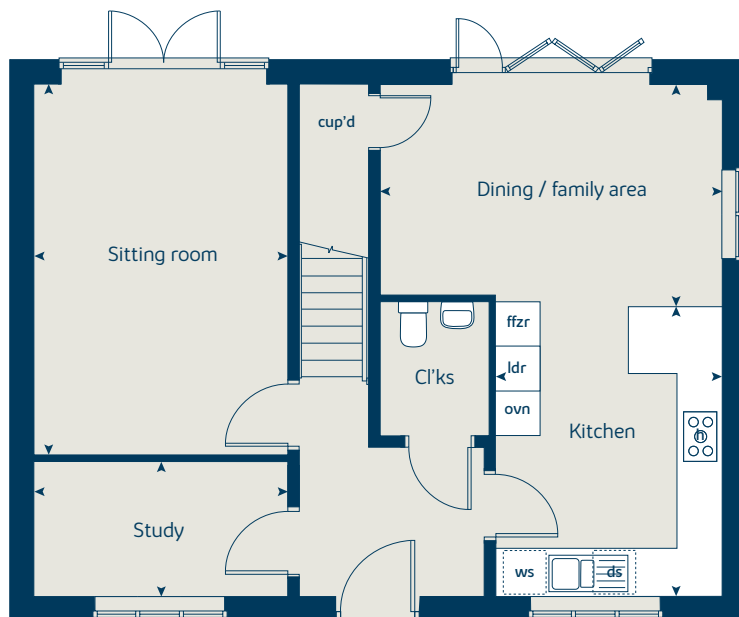
When you have finished with this leaflet please recycle it.

GL1130 DS03347 / 10.22

First floor



Ground floor





The Aspen

4 bedroom home

bovishomes.co.uk



The Aspen

4 bedroom home

Ground floor	metres	feet / inches
Kitchen / dining area	7.77 x 3.37	25' 6" x 11' 0"
Sitting room	5.04 x 3.39	16' 6" x 11' 1"
Study	2.01 x 2.01	6' 7" x 6' 7"

First floor

Bedroom 1	4.53 x 3.72	14' 8" x 12' 2"
Bedroom 2	3.98 x 3.12	13' 0" x 10' 2"
Bedroom 3	4.07 x 2.45	13' 4" x 8' 0"
Bedroom 4	3.61 x 2.45	11' 10" x 8' 0"

The Aspen | X414 (IF) 01 GL1130 |

This floorplan has been produced for illustrative purposes only. Room sizes shown are between arrow points as indicated on plan. The dimensions have tolerances of + or -50mm and should not be used other than for general guidance. If specific dimensions are required, enquiries should be made to the sales consultant.

ovn	oven	ldr	larder
h	hob	w	wardrobe
ds	dishwasher space	cup'd	cupboard
ws	washing machine space	< >	measuring points
ffzr	fridge freezer		

Please refer to the sales consultant for specific plot details as the illustrations shown are computer generated impressions of how the property may look so are indicative only. External details or finishes may vary on individual plots and homes may be built in either detached or attached styles depending on the development layout. Exact specifications, window styles and whether a property is left or right handed may differ from plot to plot.

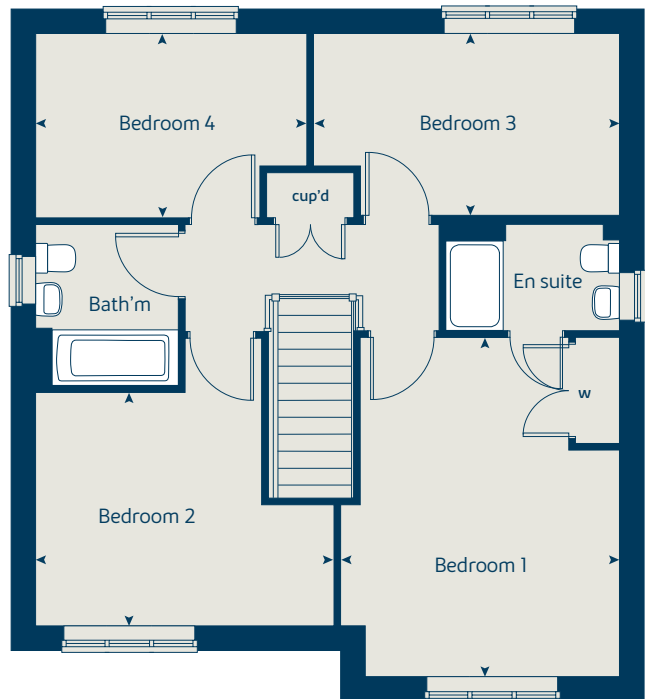
The floorplans shown are not to scale. Measurements are based on the original drawings. Slight variations may occur during construction.

Produced by the Vistry Group Design Studio.

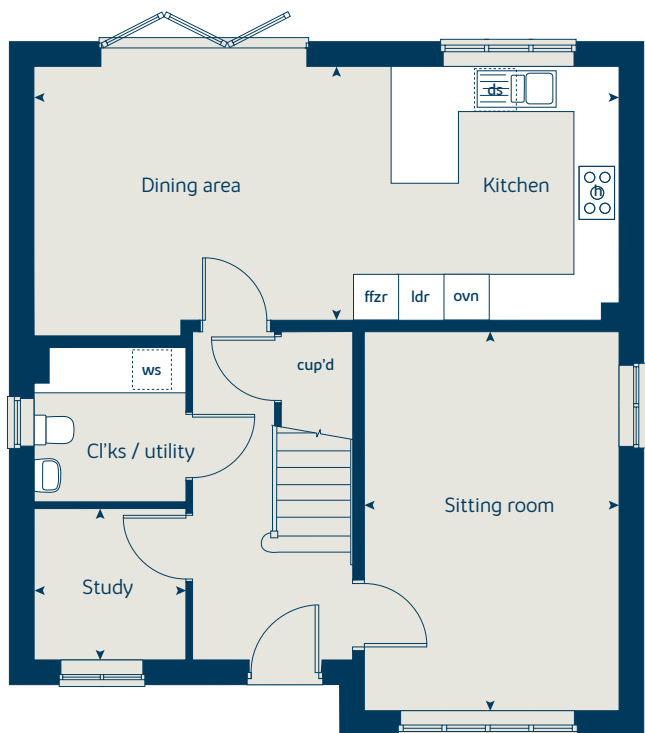
When you have finished with this leaflet please recycle it.

GL1130 DS03347 / 10.22

First floor



Ground floor





Whiteley Meadows

North Whiteley

Specification
Updated January 2023
bovishomes.co.uk

**Bovis
Homes** 

Whiteley Meadows

North Whiteley

Use this guide to see what features are included in your new home. Your sales consultant will be happy to discuss the **Select** range of extras available.



Kitchen

	2 bedroom The Hawthorn The Elderberry	3 bedroom The Hazel The Cypress The Spruce The Beech	4 bedroom The Rosewood The Chestnut The Aspen
Stainless steel sink and drainer (single bowl) with chrome mixer tap	■	■	■
Stainless steel sink and drainer (single and a half bowl) with chrome mixer tap		■	■
Stainless steel sink and drainer (single bowl) with chrome mixer tap in utility		■	■
Hotpoint hob (60cm) with built-in single underoven, with stainless steel splashback and curved glass chimney hood	■	■	■
Hotpoint hob (75 cm) with built-in double high level oven, with glass splashback and curved glass chimney hood			■
Pre-wired for under-unit lighting option	■	■	■
Fridge/freezer space	■	■	■
Integrated (Indesit) 50/50 fridge-freezer			■
Space for integrated dishwasher with plumbing and electrics (inc. removable base unit)	■	■	■
Space for washing machine with plumbing and electrics in utility		■	■
Space for washing machine with plumbing and electrics in kitchen	■	■	■

Bathrooms and en suite(s)

	2 bedroom The Hawthorn The Elderberry	3 bedroom The Hazel The Cypress The Spruce The Beech	4 bedroom The Rosewood The Chestnut The Aspen
Ideal Standard contemporary white Studio Echo sanitaryware suite	■	■	■
Ideal Standard contemporary white Concept Air sanitaryware suite with Aqua blade WC technology			■
Ideal Standard close coupled WC to cloakroom	■	■	■
Ideal Standard low profile shower tray with glass enclosure		■	■
Handheld hair wash attachment		■	■
Shower over the bath	■		
Choice of Standard Porcelanosa wall tiling (splashback, half-height over bath, and full-height to shower cubicle)*	■	■	■
Chrome bezel LED bulkhead to bathroom and en suite(s)	■	■	■
Chrome towel warmer in bathroom and en suite(s)			■

Doors and Windows

	2 bedroom The Hawthorn The Elderberry	3 bedroom The Hazel The Cypress The Spruce The Beech	4 bedroom The Rosewood The Chestnut The Aspen
Front door with multi-point security locking system and security chain	■	■	■
Chrome front door numbers	■	■	■
PVCu double glazing to windows	■	■	■
Double glazed PVCu French doors	■	■	■
Powder coated aluminium double glazed bi-fold doors			■
Internal doors to be cottage style pre-primed with silver coloured satin finish handles	■	■	■
Paving outside French / bi-fold door and path to garage personnel door (where applicable)	■	■	■

General

	2 bedroom The Hawthorn The Elderberry	3 bedroom The Hazel The Cypress The Spruce The Beech	4 bedroom The Rosewood The Chestnut The Aspen
White painted walls and smooth white ceilings	■	■	■
Combined usb / double sockets in kitchen and bedroom 1	■	■	■
Multi-media point in living room	■	■	■
TV point to bedroom 1 and family room (where applicable)	■	■	■
Master telephone socket (plus to study where shown)	■	■	■
Gas central heating with wall mounted combi-boiler, programme selector and room thermostat(s)	■	■	■
Thermostatic valves to all radiators (with the exception of rooms with separate thermostat control)	■	■	■
Fitted external tap	■	■	■
External light fitted to front porch and wiring for external light to rear door	■	■	■
Mains wired smoke detectors with battery back-up	■	■	■
Battery powered Carbon Monoxide detector (wall mounted) to be provided for each floor	■	■	■
Power and lighting to 'on plot' garage (where applicable)	■	■	■
Enclosed fenced rear garden, and garden gate (where applicable)	■	■	■
Landscaped front gardens	■	■	■
NHBC Buildmark cover	■	■	■
First two years' customer service support from Bovis Homes	■	■	■

■ Fitted as standard - included in the property
* Subject to stage of construction

So much choice...

Part of the excitement of buying a new home is the thrill of being the first person to live in the property and having a brand new contemporary kitchen and modern bathroom. Our premium brand partners ensure that all of our fixtures and fittings comply with the latest Government building regulations and only branded appliances are installed in your new home.

Once you know what specification comes included, you'll have a choice from our specially selected tiles for your kitchen and bathrooms, as well as kitchen worktops and cupboard doors. You can then use the Bovis Homes **Select** brochure to add the finishing touches to your home to make it extra special for you!

From personalising your bathrooms with stunning ceramics, or adding smooth sliding wardrobes to your master bedroom, there are a wide range of additional options and upgrades available.

The availability of items is subject to the stage of build, and can vary by development and house type. Our sales consultants will be happy to provide guidance.



When you have finished with this leaflet please recycle it.

The specification shown in this leaflet is correct at the time of going to press. Bovis Homes is continually reviewing and updating the specification on all housetypes and therefore reserves the right to change specification details. Photographs depict a typical Bovis Homes interior and may include optional upgrades. For full details regarding current specification and finishes, for the plots you are interested in, please refer to our sales consultant.

Produced by the Vistry Group Design Studio.

GL1130 DS03347 / 12.22

