



Hounsome Fields

Basingstoke

Development plan

bovishomes.co.uk



Hounsome Fields

Basingstoke

A JOINT VENTURE DEVELOPMENT



3 bedroom home

The Spruce

4 bedroom home

The Juniper

The Aspen

- v visitor space
- bcp bin collection point
- ps pumping station



The Spruce

3 bedroom home

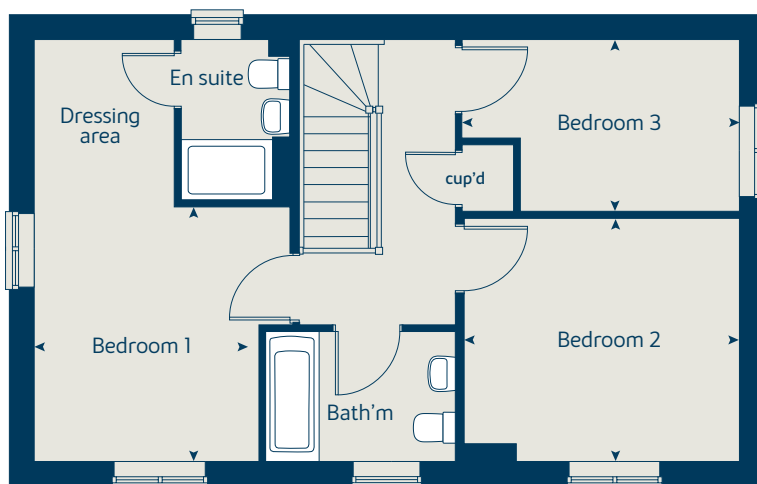
bovishomes.co.uk

**Bovis
Homes** 

The Spruce

3 bedroom home

First floor



Ground floor	metres	feet / inches
Kitchen	3.23 x 2.69	10' 7" x 8' 9"
Dining area	3.14 x 2.30	10' 3" x 7' 6"
Sitting room	5.53 x 3.32	18' 1" x 10' 10"

First floor	metres	feet / inches
Bedroom 1	3.33 x 2.94	10' 11" x 9' 8"
Bedroom 2	3.61 x 3.26	11' 10" x 10' 9"
Bedroom 3	3.61 x 2.17	11' 10" x 7' 2"

The Spruce | X307 (IF) 01 SJ9152 |

This floorplan has been produced for illustrative purposes only. Room sizes shown are between arrow points as indicated on plan. The dimensions have tolerances of + or -50mm and should not be used other than for general guidance. If specific dimensions are required, enquiries should be made to the sales consultant.

ovn	oven	ffzr	fridge freezer
h	hob	cup'd	cupboard
dw	dishwasher	<>	measuring points
wm	washing machine		

Please refer to the sales consultant for specific plot details as the illustrations shown are computer generated impressions of how the property may look so are indicative only. External details or finishes may vary on individual plots and homes may be built in either detached or attached styles depending on the development layout. Exact specifications, window styles and whether a property is left or right handed may differ from plot to plot.

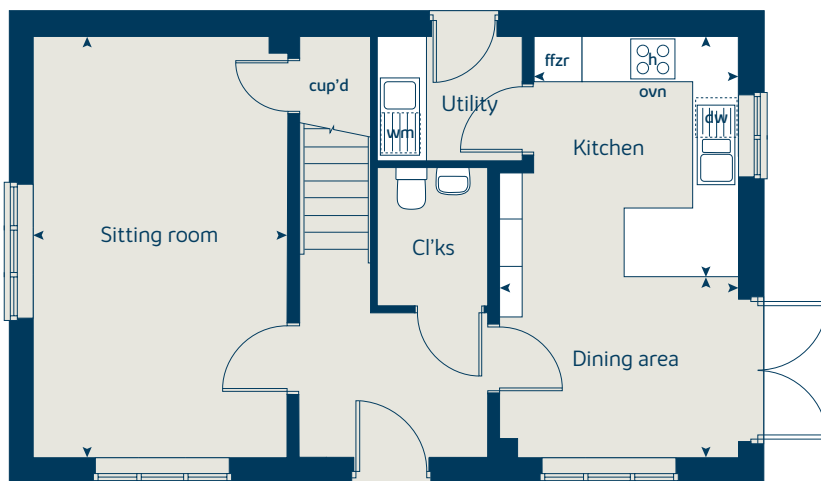
The floorplans shown are not to scale. Measurements are based on the original drawings. Slight variations may occur during construction.

Produced by the Vistry Group Design Studio.

When you have finished with this leaflet please recycle it.

SJ9152 DS12110 / 01.25

Ground floor



A JOINT VENTURE DEVELOPMENT

Wates
DEVELOPMENTS

Bovis
Homes



The Juniper

4 bedroom home

bovishomes.co.uk

**Bovis
Homes** 

The Juniper

4 bedroom home

Ground floor	metres	feet / inches
Kitchen / dining / family area	7.21 x 3.51	23' 7" x 11' 6"
Sitting room	4.55 x 3.04	14' 7" x 10' 0"
Study	2.34 x 1.85	7' 8" x 6' 0"

First floor	metres	feet / inches
Bedroom 1	3.54 x 3.47	11' 7" x 11' 5"
Bedroom 2	2.97 x 2.84	9' 8" x 9' 3"
Bedroom 3	3.52 x 2.38	11' 5" x 7' 9"
Bedroom 4	3.60 x 2.38	11' 8" x 7' 9"

The Juniper | X412 01 vt SJ9152 |

This floorplan has been produced for illustrative purposes only. Room sizes shown are between arrow points as indicated on plan. The dimensions have tolerances of + or -50mm and should not be used other than for general guidance. If specific dimensions are required, enquiries should be made to the sales consultant.

ovn	oven	ldr	larder
h	hob	ffzr	fridge freezer
dw	dishwasher	cup'd	cupboard
wm	washing machine	<>	measuring points

Please refer to the sales consultant for specific plot details as the illustrations shown are computer generated impressions of how the property may look so are indicative only. External details or finishes may vary on individual plots and homes may be built in either detached or attached styles depending on the development layout. Exact specifications, window styles and whether a property is left or right handed may differ from plot to plot.

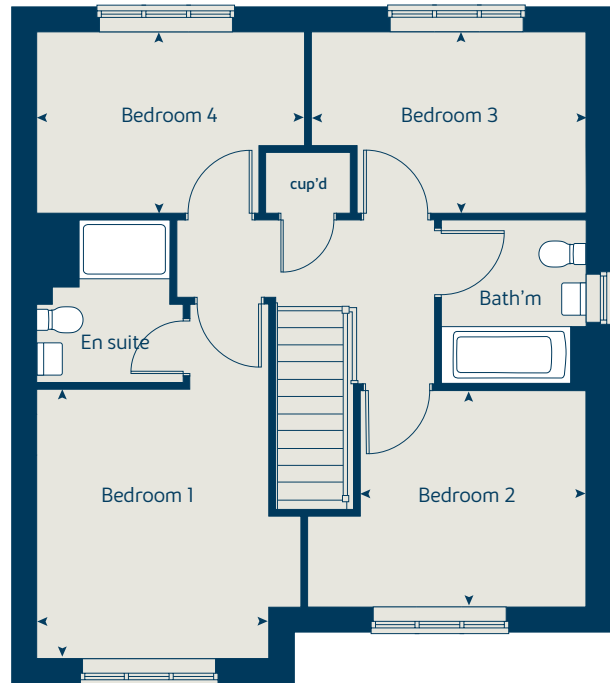
The floorplans shown are not to scale. Measurements are based on the original drawings. Slight variations may occur during construction.

Produced by the Vistry Group Design Studio.

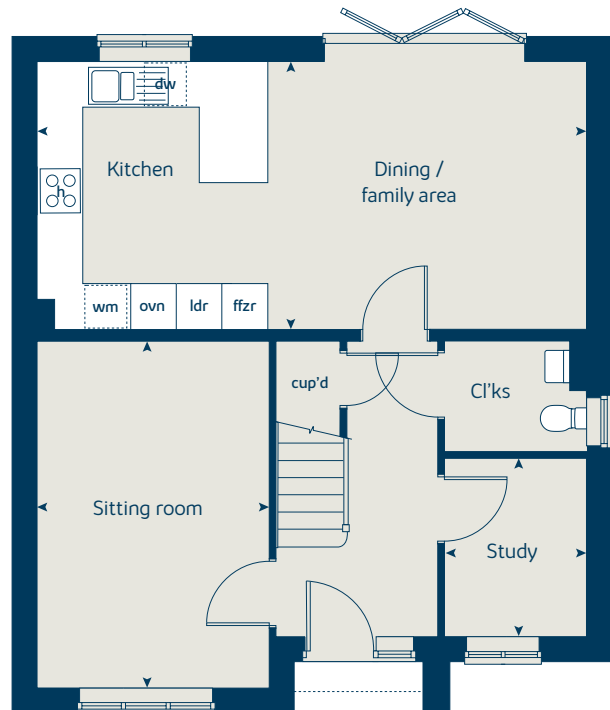
When you have finished with this leaflet please recycle it.

SJ9152 DS12110 / 01.25

First floor



Ground floor





The Aspen

4 bedroom home

bovishomes.co.uk

**Bovis
Homes** 

The Aspen

4 bedroom home

Ground floor	metres	feet / inches
Kitchen / dining area	7.77 x 3.37	25' 6" x 11' 0"
Sitting room	5.04 x 3.39	16' 6" x 11' 1"
Study	2.01 x 2.01	6' 7" x 6' 7"

First floor

Bedroom 1	4.52 x 3.42	14' 4" x 11' 4"
Bedroom 2	3.11 x 3.01	10' 3" x 9' 11"
Bedroom 3	4.07 x 2.45	13' 4" x 8' 0"
Bedroom 4	3.61 x 2.45	11' 10" x 8' 0"

The Aspen | X414 (IF) 01 vt SJ9152 |

This floorplan has been produced for illustrative purposes only. Room sizes shown are between arrow points as indicated on plan. The dimensions have tolerances of + or -50mm and should not be used other than for general guidance. If specific dimensions are required, enquiries should be made to the sales consultant.

ovn	oven	ffzr	fridge freezer
h	hob	ldr	larder
dw	dishwasher	cup'd	cupboard
wm	washing machine	◀ ▶	measuring points

Please refer to the sales consultant for specific plot details as the illustrations shown are computer generated impressions of how the property may look so are indicative only. External details or finishes may vary on individual plots and homes may be built in either detached or attached styles depending on the development layout. Exact specifications, window styles and whether a property is left or right handed may differ from plot to plot.

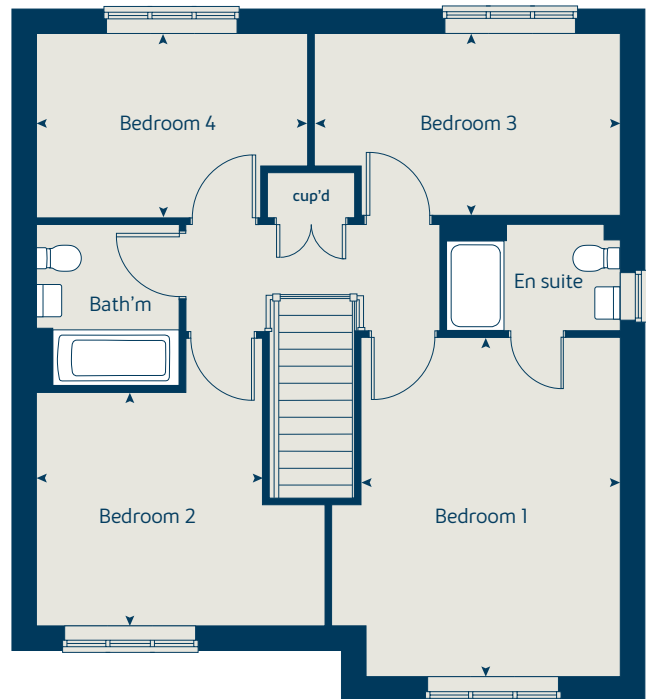
The floorplans shown are not to scale. Measurements are based on the original drawings. Slight variations may occur during construction.

Produced by the Vistry Group Design Studio.

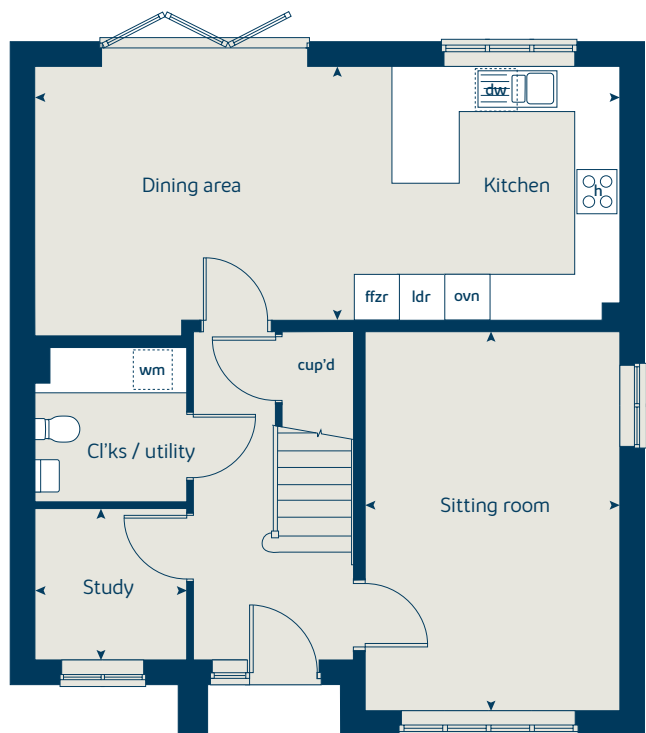
When you have finished with this leaflet please recycle it.

SJ9152 DS12110 / 01.25

First floor



Ground floor



So much choice...

Part of the excitement of buying a new home is the thrill of being the first person to live in the property and having a brand new contemporary kitchen and modern bathroom. Our premium brand partners ensure that all of our fixtures and fittings comply with the latest Government building regulations and only branded appliances are installed in your new home.

Once you know what specification comes included, you'll have a choice from our specially selected tiles for your kitchen and bathrooms, as well as kitchen worktops and cupboard doors. You can then use the Bovis Homes **Select** brochure to add the finishing touches to your home to make it extra special for you!

From personalising your bathrooms with stunning ceramics, or adding smooth sliding wardrobes to your master bedroom, there are a wide range of additional options and upgrades available.

The availability of items is subject to the stage of build, and can vary by development and house type. Our sales consultants will be happy to provide guidance.



Hounsome Fields Basingstoke

When you have finished with this leaflet please recycle it.

The specification shown in this leaflet is correct at the time of going to press. Bovis Homes is continually reviewing and updating the specification on all housetypes and therefore reserves the right to change specification details. Photographs depict a typical Bovis Homes interior and may include optional upgrades. External details, finishes and electrical layouts may vary on individual plots. The illustrations are computer generated impressions of how the property may look so are indicative only. For full details regarding current specification and finishes, for the plots you are interested in, please refer to our sales consultant.

Produced by the Vistry Group Design Studio.

150-J9152 DS12646 / 01.25

Customer use only

Signed..... Date.....

**Bovis
Homes** 

Specification

bovishomes.co.uk

**Bovis
Homes** 

Hounsome Fields

Basingstoke



Use this guide to see what features are included in your new home. Your sales consultant will be happy to discuss the **Select** range of extras available.



Kitchen

	3 bedroom The Spruce	4 bedroom The Juniper The Aspen
Pre-selected fitted kitchen	■	■ ■
Stainless steel sink and drainer (single and a half bowl) with chrome mixer tap	■	■ ■
Stainless steel sink and drainer (single bowl) with chrome mixer tap in utility	■	
Bosch gas hob with built-in double high level oven, with glass splashback and stainless steel pyramid chimney hood		■ ■
Bosch gas hob with stainless steel single under worktop oven, glass splashback and chimney hood	■	
Downlights	■	■ ■
Integrated Bosch 50 / 50 fridge freezer	■	■ ■
Integrated Bosch dishwasher with plumbing and electrics	■	■ ■
Integrated Bosch washing machine with plumbing and electrics in utility	■	■
Integrated Bosch washing machine with plumbing and electrics in kitchen		■

Bathrooms and en suite(s)

Ideal Standard contemporary white sanitary ware suite (pedestal sink and floor standing toilet)	■	■ ■
Ideal Standard close coupled WC to cloakroom	■	■ ■
Just Trays low profile shower tray with glass enclosure	■	■ ■
Handheld hair wash attachment	■	■ ■
En suite to bedroom 1	■	■ ■
Half height tiling to the bathroom and ensuite, splashback to the WC (pre-selected tile choice)	■	■ ■
Downlights to bathroom / en suite / cloakroom	■	■ ■
Chrome towel warmer in bathroom and en suite-	■	■ ■

■ Fitted as standard - included in the property * Subject to stage of construction ^ Please speak to sales consultant for plot specific details

Doors and Windows

	3 bedroom The Spruce	4 bedroom The Juniper The Aspen
Front door with multi-point security locking system and security chain	■	■ ■
PVCu double glazing to windows	■	■ ■
Double glazed PVCu French doors	■	
Powder coated aluminium double glazed bi-fold doors		■ ■
White painted four-panel internal doors with chrome lever handles	■	■ ■
Paving outside French / bi-fold door and path to garage	■	■ ■

General

White painted walls and smooth white ceilings	■	■ ■
Combined usb / double sockets in kitchen and bedroom 1	■	■ ■
Multi-media point in sitting room	■	■ ■
Master telephone socket (plus to study where shown)	■	■ ■
Gas central heating with wall mounted combi-boiler, programme selector and room thermostat(s)	■	■ ■
Thermostatic valves to all radiators (with the exception of rooms with separate thermostat control)	■	■ ■
Light to front porch and wiring to the rear of house (where applicable)	■	■ ■
Mains wired smoke detectors with battery back-up	■	■ ■
Power and lighting to garage (where applicable and when in curtilage with house)	■	■ ■
Enclosed fenced rear garden, and garden gate (where applicable)	■	■ ■
Landscaped front gardens	■	■ ■
Electric vehicle (EV) charging points	■	■ ■
NHBC Buildmark cover	■	■ ■
First two years' customer service support from Bovis Homes	■	■ ■