



Hollin Bank

Littleborough

A taste of local life

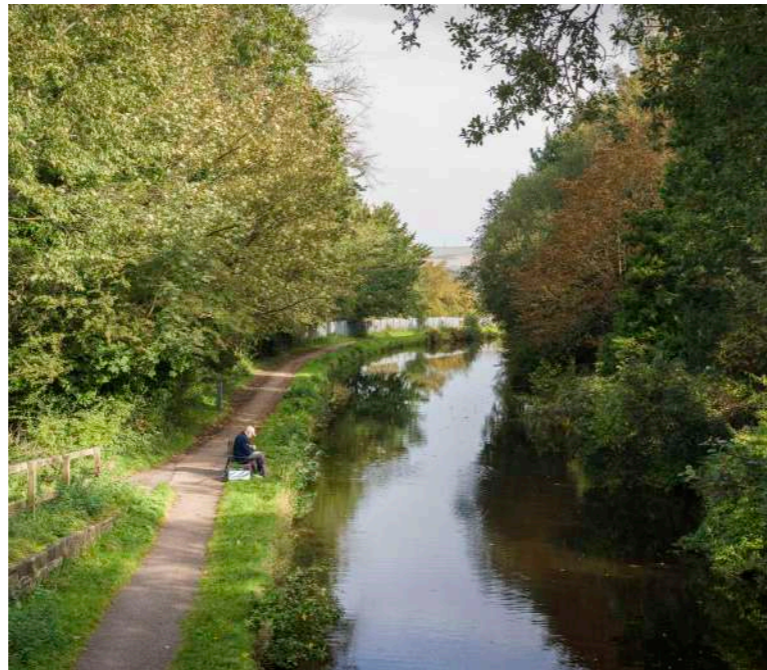
bovishomes.co.uk

**Bovis
Homes** 



Welcome to Hollin Bank

An exciting new development in the charming town of Littleborough. Nestled amidst the breathtaking landscapes on the edge of the Pennines and just a stone's throw away from the award-winning Hollingworth Lake. Hollin Bank offers you a gateway to a life of comfort, convenience and natural beauty.



Getting around

Littleborough is ideally located for transport links, with access to the M62 less than a 10-minute drive, it's great for those travelling eastwards towards Huddersfield or Leeds, as well as west-bound towards major cities such as Manchester and Liverpool.

Littleborough train station is a short walk from the development, with regular trains to Rochdale, Leeds, Manchester, Wigan, Blackburn and many more.

For wider travel, Manchester International Airport can easily be reached in under an hour.

A trip to the shops

The town of Littleborough offers everything you would need for day-to-day life including leisure facilities for all the family to enjoy. You won't need to travel far with the town offering an array of independent retailers, everything from florists to butchers, beauticians and more. Have a bite to eat in one of Littleborough's various bistros, cafes or pubs, or why not enjoy a relaxing drink whilst taking in the views of Hollingworth Lake.

There is a choice of well-known supermarkets nearby as well as doctors surgery, dentists, sports centre and pharmacies.

Taking time out

Residents can enjoy unparalleled access to nature's wonders. Whether you're embarking on a scenic hike, enjoying a

leisurely bike ride, or simply soaking in the stunning views, the great outdoors is yours to explore, right on your doorstep.

Enjoy a stroll along Rochdale Canal Towpath, or wonder around Hollingworth Lake just a short walk from Hollin Bank. For those more adventurous, you can take to the water at the activity centre with boat and pedalo hire, or try one of the many sports on offer including stand up Paddleboarding.

For other outdoor pursuits, try your hand at one of the local golf clubs or riding schools.

Education

Families choosing to make their home in Littleborough, will be delighted by the wide array of educational opportunities available in the area. Close to the development, you'll find a selection of highly regarded primary schools, including Littleborough Community Primary School and Holy Trinity Church of England Primary School, both boasting 'Good' ratings from Ofsted.

As students' progress through their educational journey, there are excellent secondary school options within easy reach of the development. Wardle Academy and Hollingworth Academy, both also rated 'Good' by Ofsted, offer comprehensive secondary education programs designed to prepare students for future success.



Scan me
for directions



Hollin Bank

Hollingworth Road, Littleborough

OL15 0AU

01623 306 557

From M62

- Leave at junction 21 following signs for Milnrow/A640
- Once on Sir Isaac Newton Way, use the left hand lane for A640 (N) picking up signs for Hollingworth Lake
- After half a mile on Elizabeth Way/A640, at the traffic lights, turn right onto Bridge Street/B6225
- At the small roundabout, take the 1st exit onto Kiln Lane/B6225
- After a third of a mile, bare left onto Wildhouse Lane/B6225 following signs for Hollingworth Lake
- Continue on until you reach the roundabout, turning right onto Smithy Bridge Road/B6225
- Follow the road round, baring left onto Hollingworth Road
- After a short distance you will reach Hollin Bank on your left

Cover photograph of Hollingworth Lake. Not view from the development. The streetscene has been produced for illustrative purposes only. Please check the details of the homes you are interested in with our sales consultant.

Vistry West Yorkshire region

1 Red Hall Avenue, Paragon Business Village, Wakefield WF1 2UL. Telephone: 01977 555 550

When you have finished with this leaflet please recycle it.

JP 06.2024

**Bovis
Homes** 



Hollin Bank

Littleborough

Development plan

bovishomes.co.uk

**Bovis
Homes** 

Hollin Bank

Littleborough



PS Pumping Station
 SS Substation
 LEAP Local equipped area for play

2 bedroom apartments

The Butterworth

3 bedroom homes

The Poplar

The Newall

The Spruce

The Jessop

The Hazel

The Cypress

The Rowan

4 bedroom homes

The Stansfield

The Willow

The Juniper

The Chestnut I

The Chestnut II

The Maple

The Aspen

5 bedroom homes

The Birch

The Yew

The Lime

Pre-sold homes

2 bedrooms

3 bedrooms

4 bedrooms



This plan has been produced for home identification purposes only and is not to scale. The development layout, landscaping and tenure of all dwellings may be subject to change throughout the course of the development. Finishes and materials may vary from those shown on the plan. Please check the details of your chosen plot and house type with the sales consultant. Development layout plan correct at time of production.

Scan me
for directions



Hollin Bank

Hollingworth Road, Littleborough

OL15 0AU

01623 306 557

From M62

- Leave at junction 21 following signs for Milnrow/A640
- Once on Sir Isaac Newton Way, use the left hand lane for A640 (N) picking up signs for Hollingworth Lake
- After half a mile on Elizabeth Way/A640, at the traffic lights, turn right onto Bridge Street/B6225
- At the small roundabout, take the 1st exit onto Kiln Lane/B6225
- After a third of a mile, bare left onto Wildhouse Lane/B6225 following signs for Hollingworth Lake
- Continue on until you reach the roundabout, turning right onto Smithy Bridge Road/B6225
- Follow the road round, baring left onto Hollingworth Road
- After a short distance you will reach Hollin Bank on your left



The Butterworth

2 bedroom apartment

bovishomes.co.uk

**Bovis
Homes** 

The Butterworth

2 bedroom apartment

First floor	metres	feet / inches
Kitchen	3.13 x 3.07	10'3" x 10'1"
Sitting / Dining	6.09 x 3.89	20'0" x 12'9"
Bedroom 1	3.98 x 2.87	13'1" x 9'5"
Bedroom 2	2.87 x 2.59	9'5" x 8'6"

ovn	oven	cup'd	cupboard
h	hob	cyl	hot water cylinder
ffzs	fridge freezer space	◀ ▶	measuring points

The Butterworth

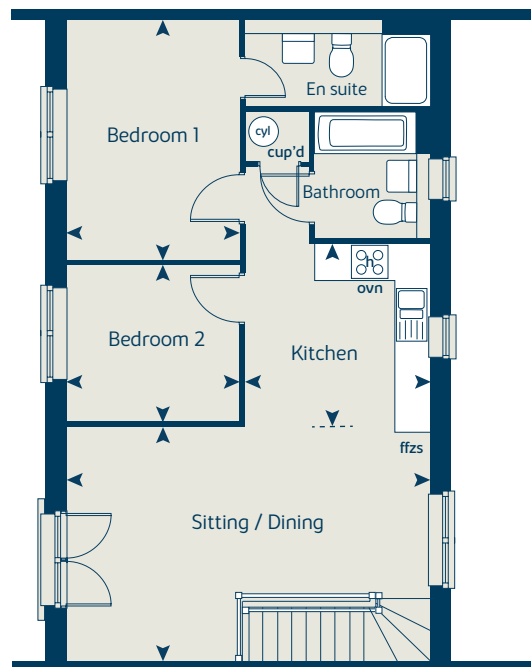
The floorplan has been produced for illustrative purposes only. Room sizes shown are between arrow points as indicated on plan. The dimensions have tolerances of + or -50mm and should not be used other than for general guidance. If specific dimensions are required, enquiries should be made to the sales consultant. The floor plans shown are not to scale. Measurements are based on the original drawings. Slight variations may occur during construction.

The illustrations shown are computer generated impressions of how the property may look and are indicative only. External details or finishes may vary on individual plots and homes may be built in either detached or attached styles depending on the development layout. Exact specifications, window styles and whether a property is left or right handed may differ from plot to plot. Please speak to our sales consultant for specific plot details.

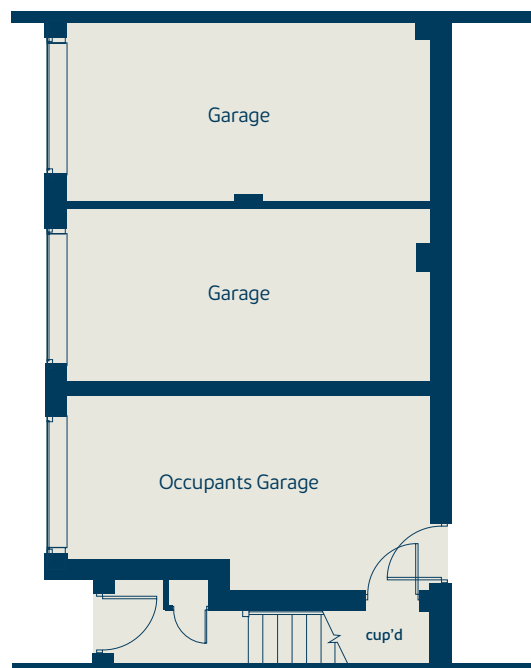
Windows apply to selected plots only. Please see sales consultant for further details.

JP 06.2024

First floor



Ground floor





The Poplar

3 bedroom home

bovishomes.co.uk

**Bovis
Homes** 

The Poplar

3 bedroom home

Ground floor	metres	feet / inches
Kitchen / Dining	4.74 x 4.38	15'7" x 14'5"
Study	2.57 x 2.32	8'5" x 7'7"

First floor	metres	feet / inches
Sitting room	4.74 x 3.46	15'7" x 11'4"
Bedroom 3	4.74 x 2.57	15'7" x 8'5"

Second floor	metres	feet / inches
Bedroom 1	4.74 x 3.46	15' 7" x 11' 4"
Bedroom 2	4.74 x 2.57	15' 7" x 8' 5"

ovn	oven	ffzs	fridge freezer space
h	hob	cup'd	cupboard
ds	dishwasher space	cyl	hot water cylinder
ws	washing machine space	< >	measuring points

The Poplar

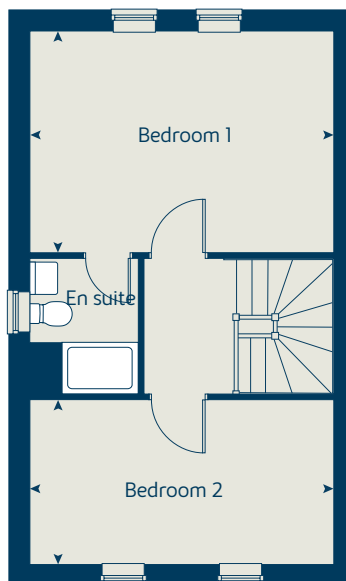
The floorplan has been produced for illustrative purposes only. Room sizes shown are between arrow points as indicated on plan. The dimensions have tolerances of + or -50mm and should not be used other than for general guidance. If specific dimensions are required, enquiries should be made to the sales consultant. The floor plans shown are not to scale. Measurements are based on the original drawings. Slight variations may occur during construction.

The illustrations shown are computer generated impressions of how the property may look and are indicative only. External details or finishes may vary on individual plots and homes may be built in either detached or attached styles depending on the development layout. Exact specifications, window styles and whether a property is left or right handed may differ from plot to plot. Please speak to our sales consultant for specific plot details.

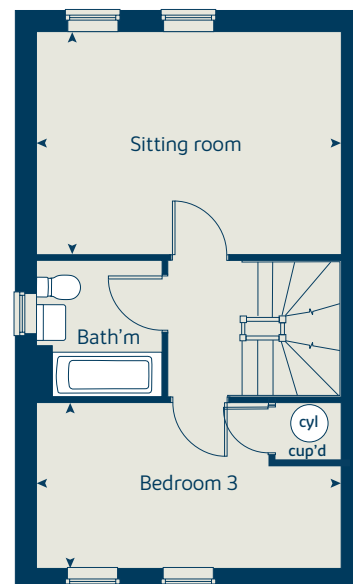
Windows apply to selected plots only. Please see sales consultant for further details.

JP 06.2024

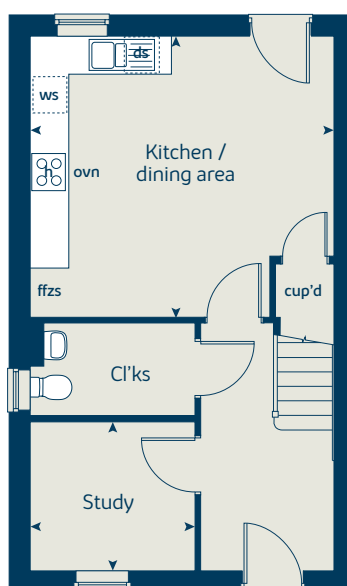
Second floor



First floor



Ground floor





The Newall

3 bedroom home

bovishomes.co.uk

**Bovis
Homes** 

The Newall

3 bedroom home

Ground floor	metres	feet / inches
Kitchen / Dining	4.71 x 2.80	15'6" x 9'2"
Sitting room	4.71 x 3.41	15'6" x 11'3"

First floor	metres	feet / inches
Study	2.80 x 2.50	9'2" x 8'3"
Bedroom 3	4.71 x 3.41	15'6" x 11'3"

Second floor	metres	feet / inches
Bedroom 1	3.41 x 2.90	11'3" x 9'6"
Bedroom 2	4.71 x 2.80	15'6" x 9'2"

ovn	oven	ffzs	fridge freezer space
h	hob	cup'd	cupboard
ds	dishwasher space	cyl	hot water cylinder
ws	washing machine space	< >	measuring points

The Newall

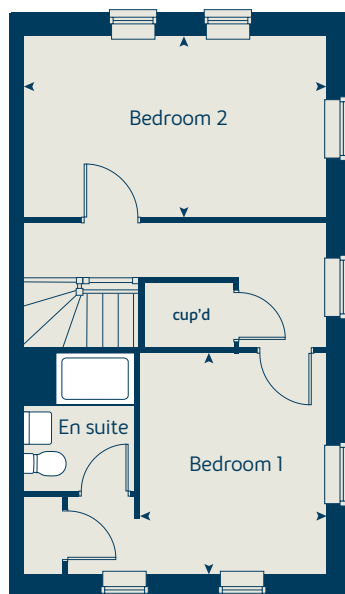
The floorplan has been produced for illustrative purposes only. Room sizes shown are between arrow points as indicated on plan. The dimensions have tolerances of + or -50mm and should not be used other than for general guidance. If specific dimensions are required, enquiries should be made to the sales consultant. The floor plans shown are not to scale. Measurements are based on the original drawings. Slight variations may occur during construction.

The illustrations shown are computer generated impressions of how the property may look and are indicative only. External details or finishes may vary on individual plots and homes may be built in either detached or attached styles depending on the development layout. Exact specifications, window styles and whether a property is left or right handed may differ from plot to plot. Please speak to our sales consultant for specific plot details.

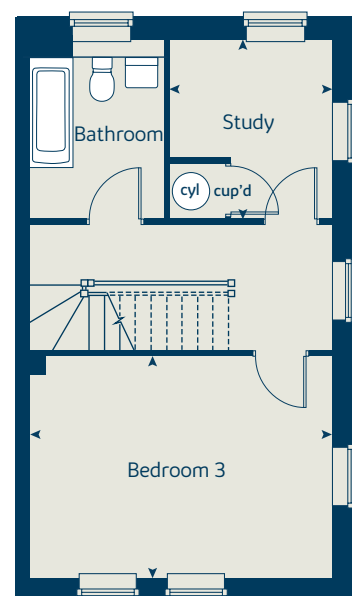
Windows apply to selected plots only. Please see sales consultant for further details.

JP 06.2024

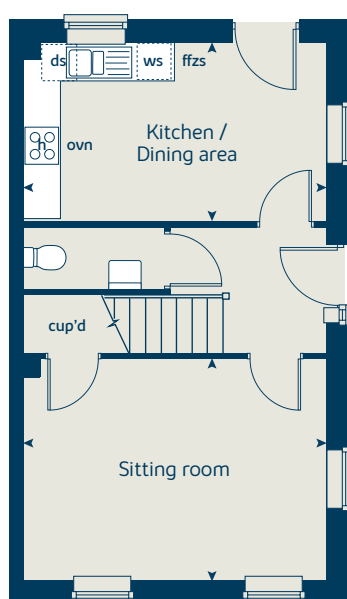
Second floor



First floor



Ground floor





The Spruce

Detached 3 bedroom home

bovishomes.co.uk

**Bovis
Homes** 

The Spruce

Detached
3 bedroom home

Ground floor	metres	feet / inches
Kitchen / Dining	5.52 x 3.20	18'2" x 10'6"
Sitting room	5.52 x 3.38	18'2" x 11'1"

First floor

Bedroom 1	3.33 x 2.94	10'11" x 9'8"
Bedroom 2	3.63 x 3.26	11'11" x 10'9"
Bedroom 3	3.63 x 2.17	11'11" x 7'2"

ovn	oven	ffzs	fridge freezer space
h	hob	cup'd	cupboard
cyl	hot water cylinder	w	wardrobe
ws	washing machine space	◀ ▶	measuring points

The Spruce

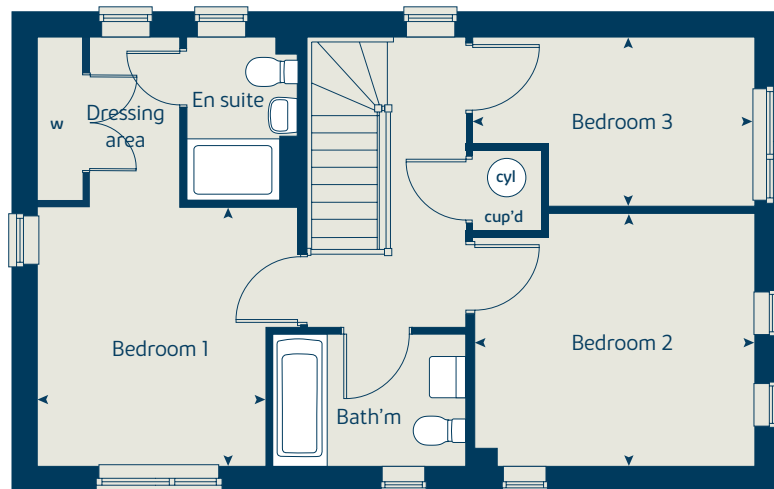
The floorplan has been produced for illustrative purposes only. Room sizes shown are between arrow points as indicated on plan. The dimensions have tolerances of + or -50mm and should not be used other than for general guidance. If specific dimensions are required, enquiries should be made to the sales consultant. The floor plans shown are not to scale. Measurements are based on the original drawings. Slight variations may occur during construction.

The illustrations shown are computer generated impressions of how the property may look and are indicative only. External details or finishes may vary on individual plots and homes may be built in either detached or attached styles depending on the development layout. Exact specifications, window styles and whether a property is left or right handed may differ from plot to plot. Please speak to our sales consultant for specific plot details.

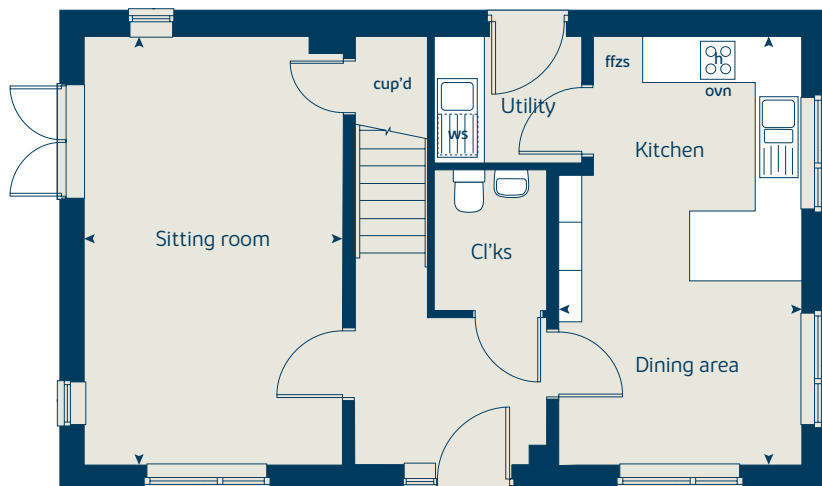
Window positions may vary from plot to plot. See sales consultant for details on individual plot working drawings.

JP 06.2024

First floor



Ground floor





The Spruce

Semi-detached 3 bedroom home

bovishomes.co.uk

**Bovis
Homes** 

The Spruce

Semi-detached
3 bedroom home

Ground floor	metres	feet / inches
Kitchen / Dining	5.52 x 3.20	18'2" x 10'6"
Sitting room	5.52 x 3.38	18'2" x 11'1"

First floor

Bedroom 1	3.33 x 2.94	10'11" x 9'8"
Bedroom 2	3.63 x 3.26	11'11" x 10'9"
Bedroom 3	3.63 x 2.17	11'11" x 7'2"

ovn	oven	ffzs	fridge freezer space
h	hob	cup'd	cupboard
cyl	hot water cylinder	w	wardrobe
ws	washing machine space	◀ ▶	measuring points

The Spruce

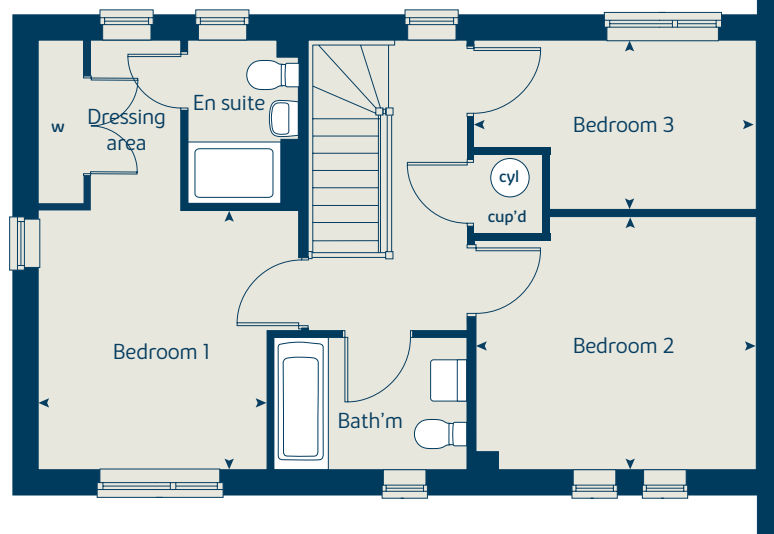
The floorplan has been produced for illustrative purposes only. Room sizes shown are between arrow points as indicated on plan. The dimensions have tolerances of + or -50mm and should not be used other than for general guidance. If specific dimensions are required, enquiries should be made to the sales consultant. The floor plans shown are not to scale. Measurements are based on the original drawings. Slight variations may occur during construction.

The illustrations shown are computer generated impressions of how the property may look and are indicative only. External details or finishes may vary on individual plots and homes may be built in either detached or attached styles depending on the development layout. Exact specifications, window styles and whether a property is left or right handed may differ from plot to plot. Please speak to our sales consultant for specific plot details.

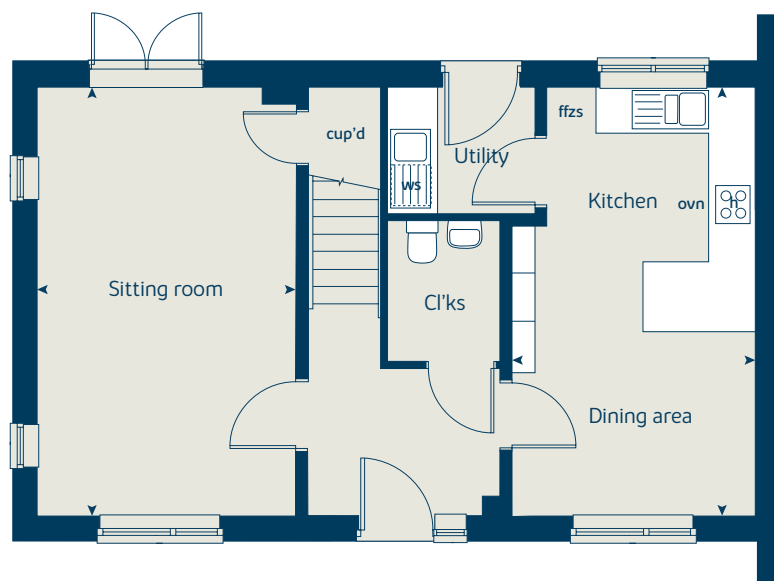
Window positions may vary from plot to plot. See sales consultant for details on individual plot working drawings.

JP 06.2024

First floor



Ground floor





The Jessop

3 bedroom home

bovishomes.co.uk

**Bovis
Homes** 

The Jessop

3 bedroom home

First floor	metres	feet / inches
Kitchen	3.38 x 3.26	11'1" x 10'9"
Sitting / Dining	5.50 x 4.59	18'1" x 15'1"

Second floor	metres	feet / inches
Bedroom 1	3.26 x 2.88	10'9" x 9'6"
Bedroom 2	3.33 x 2.88	10'11" x 9'5"
Bedroom 3	3.36 x 2.03	11'1" x 6'8"

ovn	oven	ds	dishwasher space
h	hob	w	wardrobe
drs	dryer space	cup'd	cupboard
ws	washing machine space	cyl	hot water cylinder
ffzs	fridge freezer space	< >	measuring points

The Jessop

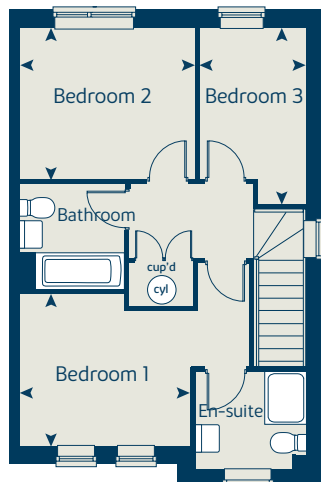
The floorplan has been produced for illustrative purposes only. Room sizes shown are between arrow points as indicated on plan. The dimensions have tolerances of + or -50mm and should not be used other than for general guidance. If specific dimensions are required, enquiries should be made to the sales consultant. The floor plans shown are not to scale. Measurements are based on the original drawings. Slight variations may occur during construction.

The illustrations shown are computer generated impressions of how the property may look and are indicative only. External details or finishes may vary on individual plots and homes may be built in either detached or attached styles depending on the development layout. Exact specifications, window styles and whether a property is left or right handed may differ from plot to plot. Please speak to our sales consultant for specific plot details.

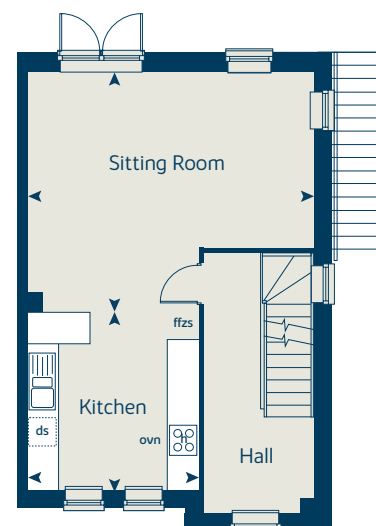
Window positions may vary from plot to plot. See sales consultant for details on individual plot working drawings.

JP 06.2024

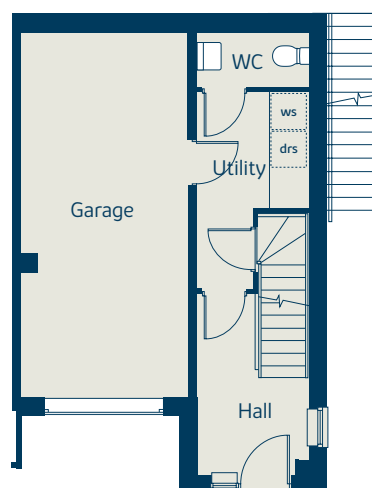
Second floor



First floor



Ground floor





The Hazel

3 bedroom home

bovishomes.co.uk

**Bovis
Homes** 

The Hazel

3 bedroom home

Ground floor	metres	feet / inches
Kitchen / Dining	5.19 x 2.98	17' 0" x 9' 10"
Sitting room	4.17 x 3.70	13' 8" x 12' 2"

First floor

Bedroom 1	3.54 x 3.26	11' 7" x 10' 8"
Bedroom 2	2.95 x 2.72	9' 8" x 8' 11"
Bedroom 3	3.48 x 2.14	11' 5" x 7' 1"

ovn	oven	ffzs	fridge freezer space
h	hob	cup'd	cupboard
ds	dishwasher space	cyl	hot water cylinder
ws	washing machine space	◀ ▶	measuring points

The Hazel

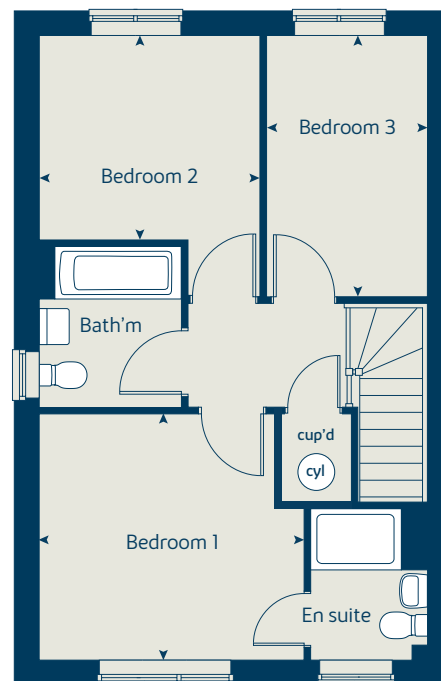
The floorplan has been produced for illustrative purposes only. Room sizes shown are between arrow points as indicated on plan. The dimensions have tolerances of + or -50mm and should not be used other than for general guidance. If specific dimensions are required, enquiries should be made to the sales consultant. The floor plans shown are not to scale. Measurements are based on the original drawings. Slight variations may occur during construction.

The illustrations shown are computer generated impressions of how the property may look and are indicative only. External details or finishes may vary on individual plots and homes may be built in either detached or attached styles depending on the development layout. Exact specifications, window styles and whether a property is left or right handed may differ from plot to plot. Please speak to our sales consultant for specific plot details.

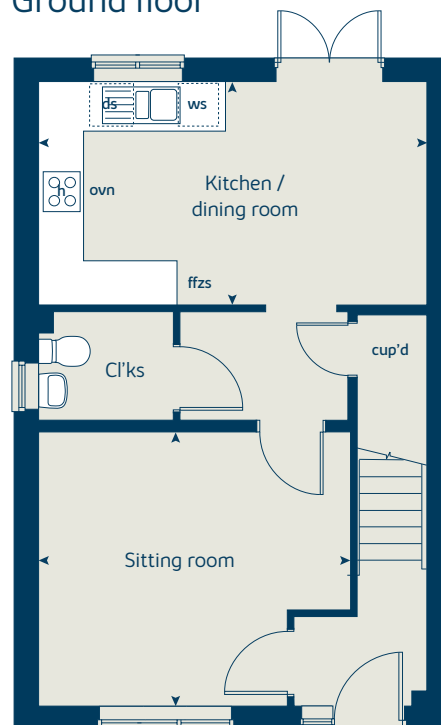
Window positions may vary from plot to plot. See sales consultant for details on individual plot working drawings.

JP 06.2024

First floor



Ground floor





The Cypress

3 bedroom home

bovishomes.co.uk

**Bovis
Homes** 

The Cypress

3 bedroom home

Ground floor	metres	feet / inches
Kitchen / Dining	5.52 x 3.12	18' 1" x 10' 2"
Sitting room	4.33 x 3.40	14' 2" x 11' 1"

First floor

Bedroom 1	4.09 x 3.28	13' 5" x 10' 9"
Bedroom 2	3.28 x 2.83	10' 9" x 9' 3"
Bedroom 3	3.52 x 2.16	11' 7" x 7' 1"

ovn	oven	ffzs	fridge freezer space
h	hob	cup'd	cupboard
ds	dishwasher space	w	wardrobe
ws	washing machine space	◀ ▶	measuring points
cyl	hot water cylinder		

The Cypress

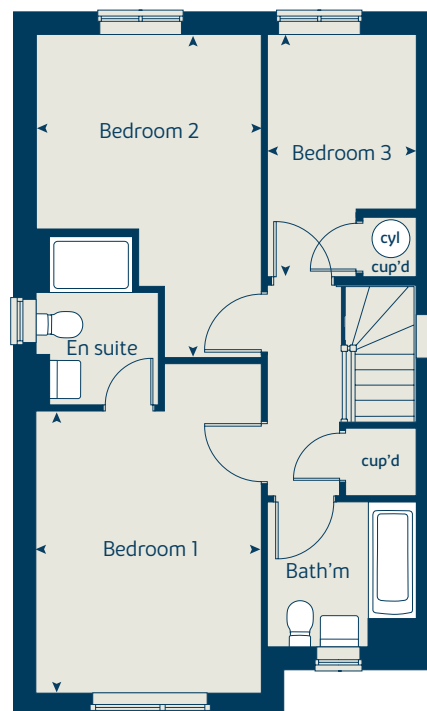
The floorplan has been produced for illustrative purposes only. Room sizes shown are between arrow points as indicated on plan. The dimensions have tolerances of + or -50mm and should not be used other than for general guidance. If specific dimensions are required, enquiries should be made to the sales consultant. The floor plans shown are not to scale. Measurements are based on the original drawings. Slight variations may occur during construction.

The illustrations shown are computer generated impressions of how the property may look and are indicative only. External details or finishes may vary on individual plots and homes may be built in either detached or attached styles depending on the development layout. Exact specifications, window styles and whether a property is left or right handed may differ from plot to plot. Please speak to our sales consultant for specific plot details.

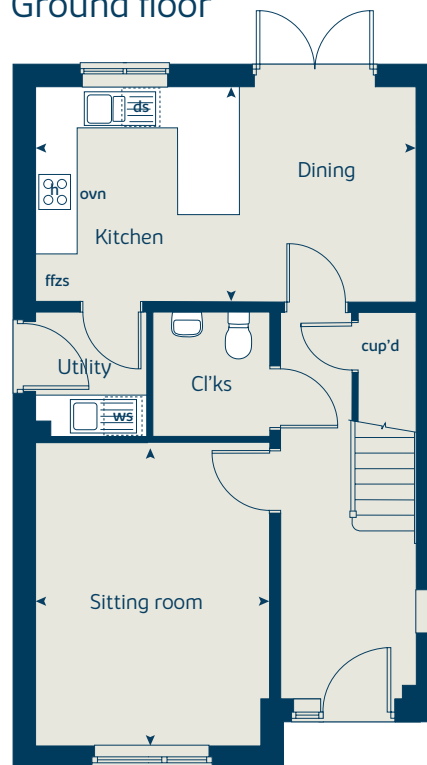
Window positions may vary from plot to plot. See sales consultant for details on individual plot working drawings.

JP 06.2024

First floor



Ground floor





The Rowan

3 bedroom home

bovishomes.co.uk

**Bovis
Homes** 

The Rowan

3 bedroom home

Ground floor	metres	feet / inches
Kitchen	2.85 x 2.46	9' 4" x 8' 1"
Sitting / Dining	5.23 x 5.19	17' 2" x 17' 0"

First floor	metres	feet / inches
Bedroom 1	3.57 x 3.68	11' 9" x 12' 1"
Bedroom 2	2.97 x 2.44	9' 9" x 8' 0"
Bedroom 3	3.54 x 2.13	11' 7" x 7' 0"

ovn	oven	ffzs	fridge freezer space
h	hob	cup'd	cupboard
ds	dishwasher space	cyl	hot water cylinder
ws	washing machine space	◀ ▶	measuring points

The Rowan

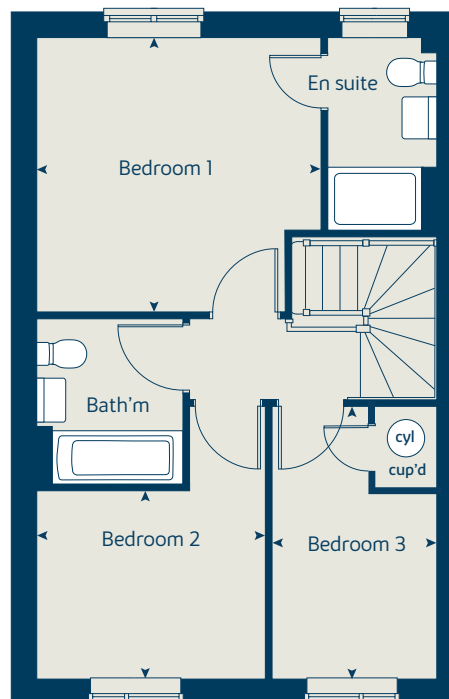
The floorplan has been produced for illustrative purposes only. Room sizes shown are between arrow points as indicated on plan. The dimensions have tolerances of + or -50mm and should not be used other than for general guidance. If specific dimensions are required, enquiries should be made to the sales consultant. The floor plans shown are not to scale. Measurements are based on the original drawings. Slight variations may occur during construction.

The illustrations shown are computer generated impressions of how the property may look and are indicative only. External details or finishes may vary on individual plots and homes may be built in either detached or attached styles depending on the development layout. Exact specifications, window styles and whether a property is left or right handed may differ from plot to plot. Please speak to our sales consultant for specific plot details.

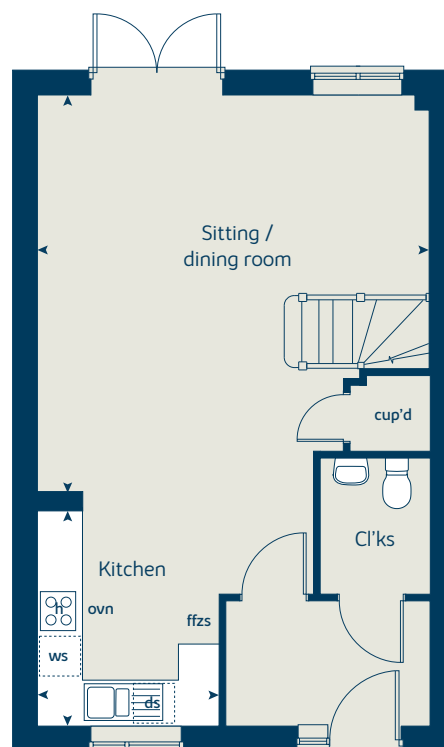
Window positions may vary from plot to plot. See sales consultant for details on individual plot working drawings.

JP 06.2024

First floor



Ground floor





The Stansfield

4 bedroom home

bovishomes.co.uk

**Bovis
Homes** 

The Stansfield

4 bedroom home

Ground floor metres feet / inches
 Kitchen / Dining 5.32 x 2.86 17'5" x 9'5"

First floor
 Sitting room 5.32 x 3.53 17'5" x 11'7"
 Bedroom 3 3.11 x 3.02 10'2" x 9'11"

Second floor
 Bedroom 1 4.26 x 4.03 14'0" x 13'3"
 Bedroom 2 4.73 x 2.61 15'6" x 8'7"
 Bedroom 4 3.63 x 2.61 11'11" x 8'7"

ovn	oven	ffzs	fridge freezer space
h	hob	cup'd	cupboard
ds	dishwasher space	cyl	hot water cylinder
ws	washing machine space	◀ ▶	measuring points

The Stansfield

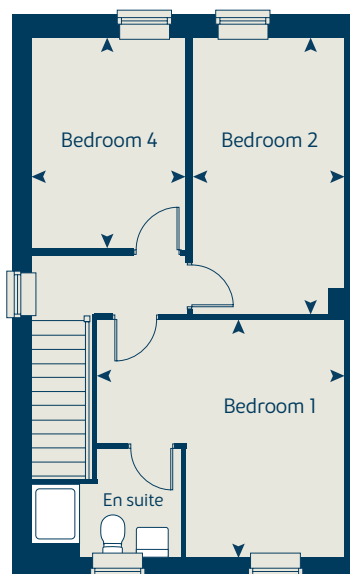
The floorplan has been produced for illustrative purposes only. Room sizes shown are between arrow points as indicated on plan. The dimensions have tolerances of + or -50mm and should not be used other than for general guidance. If specific dimensions are required, enquiries should be made to the sales consultant. The floor plans shown are not to scale. Measurements are based on the original drawings. Slight variations may occur during construction.

The illustrations shown are computer generated impressions of how the property may look and are indicative only. External details or finishes may vary on individual plots and homes may be built in either detached or attached styles depending on the development layout. Exact specifications, window styles and whether a property is left or right handed may differ from plot to plot. Please speak to our sales consultant for specific plot details.

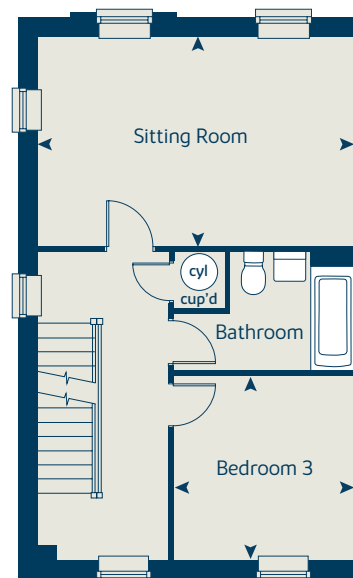
Window positions may vary from plot to plot. See sales consultant for details on individual plot working drawings.

JP 06.2024

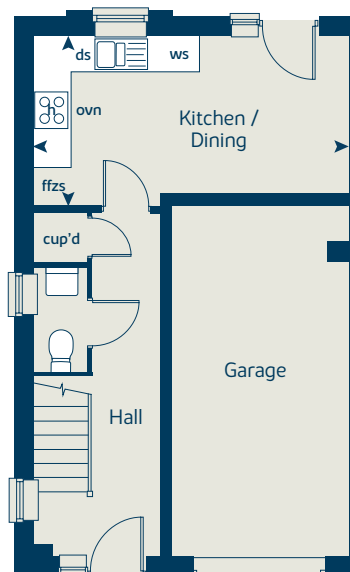
Second floor



First floor



Ground floor





The Willow

4 bedroom home

bovishomes.co.uk

**Bovis
Homes** 

The Willow

4 bedroom home

Ground floor	metres	feet / inches
Kitchen / Dining	5.97 x 3.77	19' 7" x 12' 4"
Sitting room	5.09 x 3.22	16' 8" x 10' 6"

First floor	metres	feet / inches
Bedroom 2	4.89 x 3.33	16' 0" x 10' 11"
Bedroom 3	4.04 x 3.33	13' 3" x 10' 11"
Bedroom 4	2.77 x 2.56	9' 1" x 8' 4"

Second floor	metres	feet / inches
Bedroom 1	5.92 x 4.34	19' 5" x 14' 2"

ovn	oven	ffzr	fridge freezer
h	hob	w	wardrobe
ds	dishwasher space	cup'd	cupboard
ws	washing machine space	◀ ▶	measuring points
cyl	hot water cylinder		

The Willow

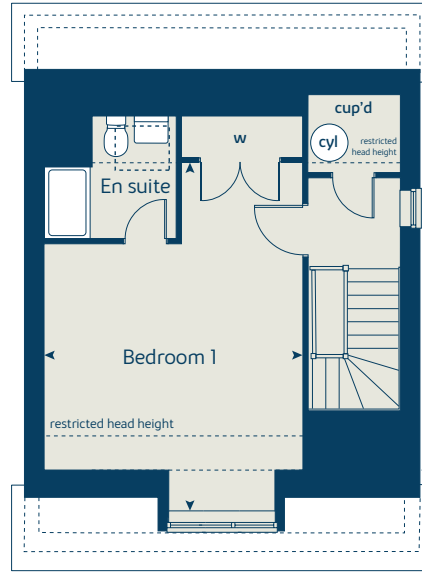
The floorplan has been produced for illustrative purposes only. Room sizes shown are between arrow points as indicated on plan. The dimensions have tolerances of + or -50mm and should not be used other than for general guidance. If specific dimensions are required, enquiries should be made to the sales consultant. The floor plans shown are not to scale. Measurements are based on the original drawings. Slight variations may occur during construction.

The illustrations shown are computer generated impressions of how the property may look and are indicative only. External details or finishes may vary on individual plots and homes may be built in either detached or attached styles depending on the development layout. Exact specifications, window styles and whether a property is left or right handed may differ from plot to plot. Please speak to our sales consultant for specific plot details.

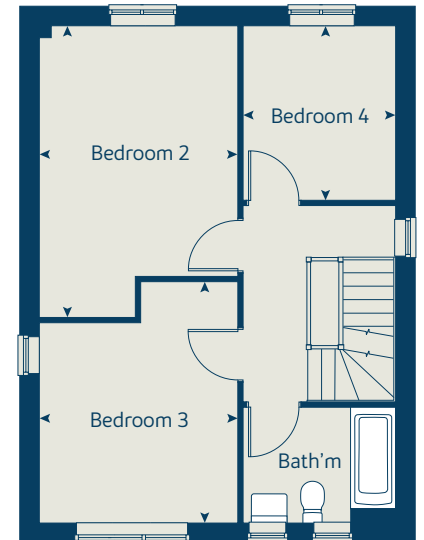
Window positions may vary from plot to plot. See sales consultant for details on individual plot working drawings.

JP 06.2024

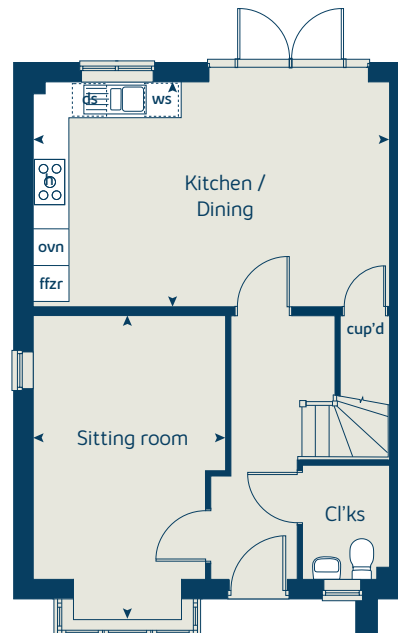
Second floor



First floor



Ground floor





The Juniper

4 bedroom home

bovishomes.co.uk

**Bovis
Homes** 

The Juniper

4 bedroom home

Ground floor	metres	feet / inches
Kitchen / Dining	7.21 x 3.52	23' 8" x 11' 7"
Sitting room	4.55 x 3.05	14' 11" x 10' 0"
Study	2.34 x 1.85	7' 8" x 6' 1"

First floor	metres	feet / inches
Bedroom 1	3.47 x 2.85	11'5" x 9'4"
Bedroom 2	3.65 x 2.83	12'0" x 9'4"
Bedroom 3	3.52 x 2.37	11'7" x 7'10"
Bedroom 4	3.60 x 2.38	11'10" x 7'10"

ovn	oven	w	wardrobe
h	hob	cup'd	cupboard
ds	dishwasher space	cyl	hot water cylinder
ws	washing machine space	< >	measuring points
ffzr	fridge freezer		

The Juniper

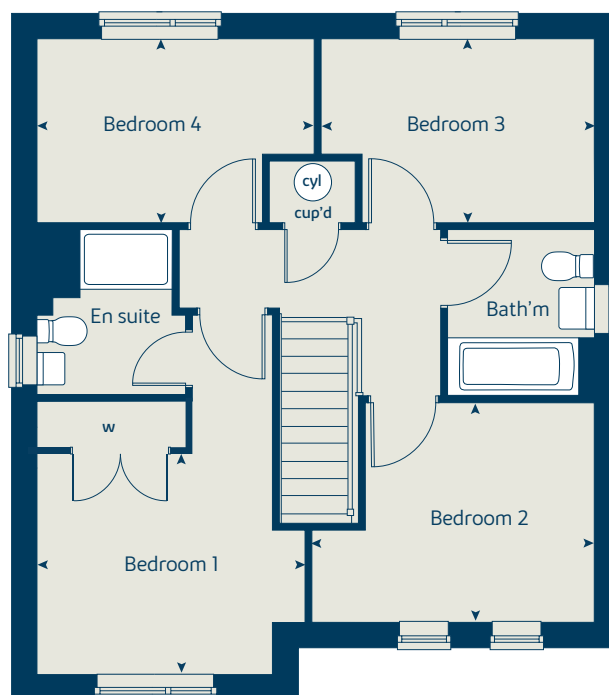
The floorplan has been produced for illustrative purposes only. Room sizes shown are between arrow points as indicated on plan. The dimensions have tolerances of + or -50mm and should not be used other than for general guidance. If specific dimensions are required, enquiries should be made to the sales consultant. The floor plans shown are not to scale. Measurements are based on the original drawings. Slight variations may occur during construction.

The illustrations shown are computer generated impressions of how the property may look and are indicative only. External details or finishes may vary on individual plots and homes may be built in either detached or attached styles depending on the development layout. Exact specifications, window styles and whether a property is left or right handed may differ from plot to plot. Please speak to our sales consultant for specific plot details.

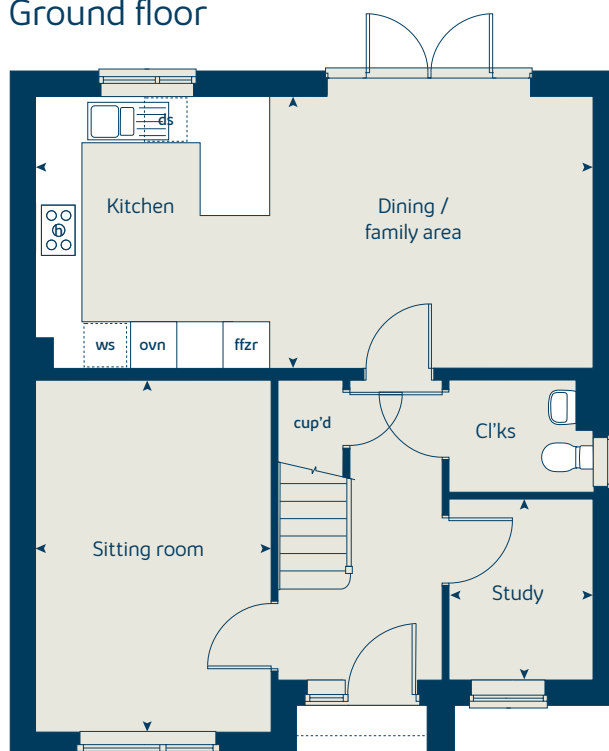
Window positions may vary from plot to plot. See sales consultant for details on individual plot working drawings.

JP 06.2024

First floor



Ground floor





The Chestnut I

4 bedroom home

bovishomes.co.uk

**Bovis
Homes** 

The Chestnut I

4 bedroom home

Ground floor	metres	feet / inches
Kitchen	4.04 x 3.04	13'3" x 10'0"
Dining/Family	4.59 x 2.83	15'0" x 9'3"
Sitting room	4.97 x 3.40	16'4" x 11'2"
Study	3.40 x 1.81	11'2" x 5'11"

First floor

Bedroom 1	4.47 x 3.24	14'8" x 10'8"
Bedroom 2	3.47 x 3.36	11'5" x 11'1"
Bedroom 3	3.42 x 2.31	11'3" x 7'7"
Bedroom 4	3.23 x 2.34	10'7" x 7'8"

ovn	oven	w	wardrobe
h	hob	cup'd	cupboard
ds	dishwasher space	cyl	hot water cylinder
ws	washing machine space	◀ ▶	measuring points
ffzr	fridge freezer		

The Chestnut

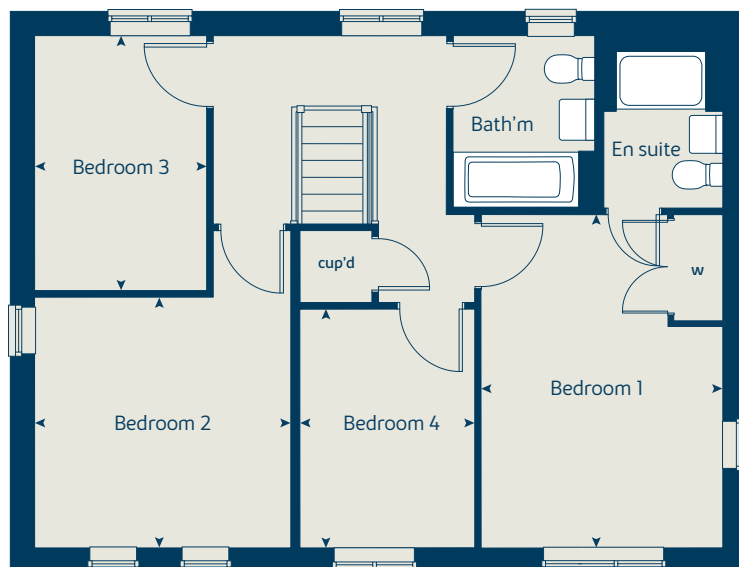
The floorplan has been produced for illustrative purposes only. Room sizes shown are between arrow points as indicated on plan. The dimensions have tolerances of + or -50mm and should not be used other than for general guidance. If specific dimensions are required, enquiries should be made to the sales consultant. The floor plans shown are not to scale. Measurements are based on the original drawings. Slight variations may occur during construction.

The illustrations shown are computer generated impressions of how the property may look and are indicative only. External details or finishes may vary on individual plots and homes may be built in either detached or attached styles depending on the development layout. Exact specifications, window styles and whether a property is left or right handed may differ from plot to plot. Please speak to our sales consultant for specific plot details.

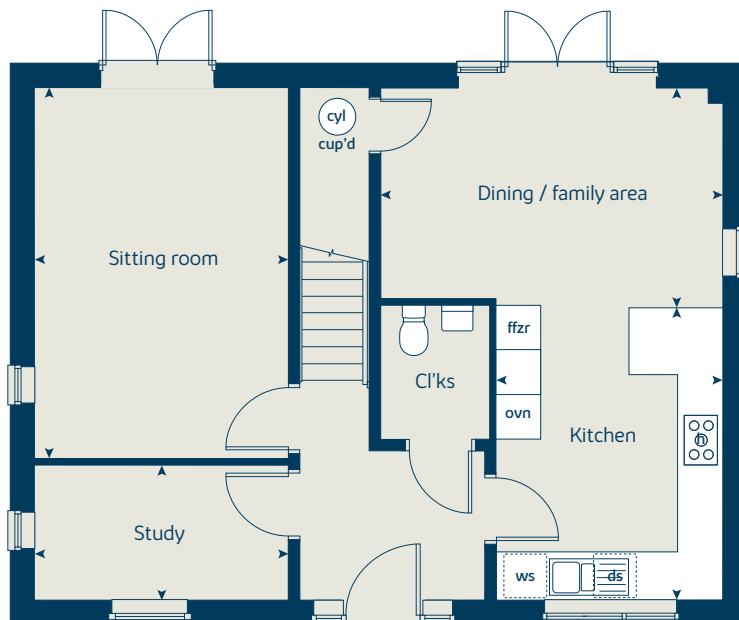
Window positions may vary from plot to plot. See sales consultant for details on individual plot working drawings.

JP 06.2024

First floor



Ground floor





The Chestnut II

4 bedroom home

bovishomes.co.uk

**Bovis
Homes** 

The Chestnut II

4 bedroom home

First floor



Ground floor	metres	feet / inches
Kitchen	4.04 x 3.04	13'3" x 10'0"
Dining/Family	4.59 x 2.83	15'0" x 9'3"
Sitting room	4.97 x 3.40	16'4" x 11'2"
Study	3.40 x 1.81	11'2" x 5'11"

First floor

Bedroom 1	4.47 x 3.10	14'8" x 10'2"
Bedroom 2	3.47 x 3.36	11'5" x 11'1"
Bedroom 3	3.42 x 2.31	11'3" x 7'7"
Bedroom 4	3.65 x 2.48	12'0" x 8'2"

ovn	oven	w	wardrobe
h	hob	cup'd	cupboard
ds	dishwasher space	cyl	hot water cylinder
ws	washing machine space	◀ ▶	measuring points
ffzr	fridge freezer		

The Chestnut

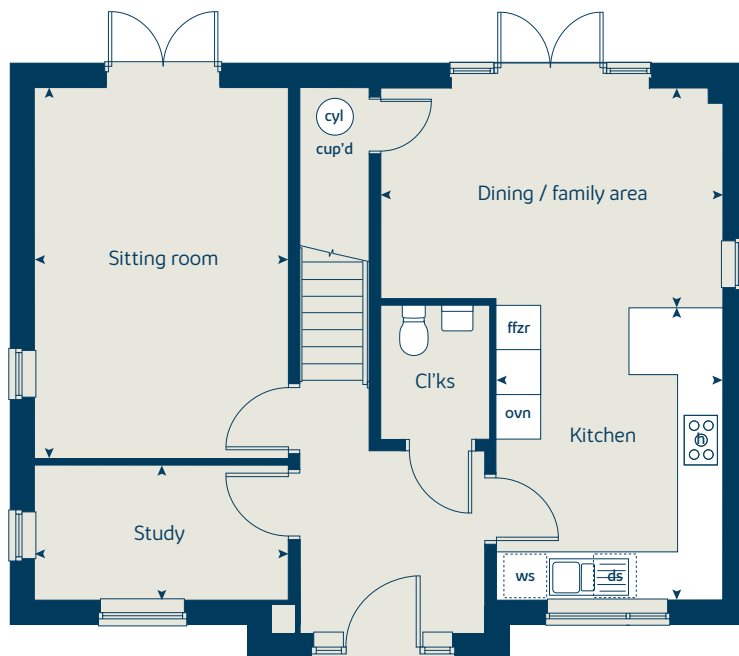
The floorplan has been produced for illustrative purposes only. Room sizes shown are between arrow points as indicated on plan. The dimensions have tolerances of + or -50mm and should not be used other than for general guidance. If specific dimensions are required, enquiries should be made to the sales consultant. The floor plans shown are not to scale. Measurements are based on the original drawings. Slight variations may occur during construction.

The illustrations shown are computer generated impressions of how the property may look and are indicative only. External details or finishes may vary on individual plots and homes may be built in either detached or attached styles depending on the development layout. Exact specifications, window styles and whether a property is left or right handed may differ from plot to plot. Please speak to our sales consultant for specific plot details.

Window positions may vary from plot to plot. See sales consultant for details on individual plot working drawings.

JP 06.2024

Ground floor





The Maple

4 bedroom home

bovishomes.co.uk

**Bovis
Homes** 

The Maple

4 bedroom home

Ground floor	metres	feet / inches
Kitchen	3.55 x 3.50	11'8" x 11'6"
Family/Dining	7.31 x 3.28	24'0" x 10'9"
Sitting room	5.17 x 3.50	17'0" x 11'6"
Study	2.50 x 2.29	8'3" x 7'6"

First floor

Bedroom 1	3.60 x 3.50	11'10" x 11'6"
Bedroom 2	4.32 x 3.56	14'2" x 11'8"
Bedroom 3	4.17 x 2.90	13'8" x 9'6"
Bedroom 4	2.95 x 2.90	9'8" x 9'6"

ovn	oven	w	wardrobe
h	hob	cyl	hot water cylinder
ds	dishwasher space	cup'd	cupboard
ws	washing machine space	< >	measuring points
ffzr	fridge freezer		

The Maple

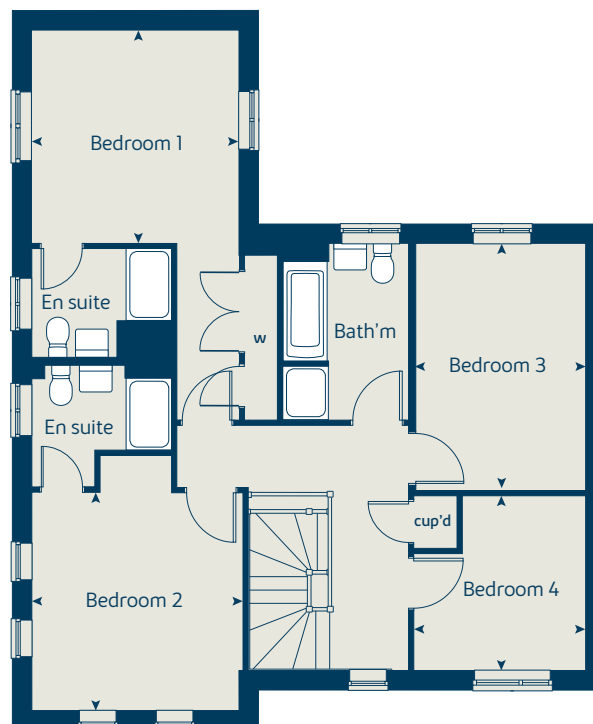
The floorplan has been produced for illustrative purposes only. Room sizes shown are between arrow points as indicated on plan. The dimensions have tolerances of + or -50mm and should not be used other than for general guidance. If specific dimensions are required, enquiries should be made to the sales consultant. The floor plans shown are not to scale. Measurements are based on the original drawings. Slight variations may occur during construction.

The illustrations shown are computer generated impressions of how the property may look and are indicative only. External details or finishes may vary on individual plots and homes may be built in either detached or attached styles depending on the development layout. Exact specifications, window styles and whether a property is left or right handed may differ from plot to plot. Please speak to our sales consultant for specific plot details.

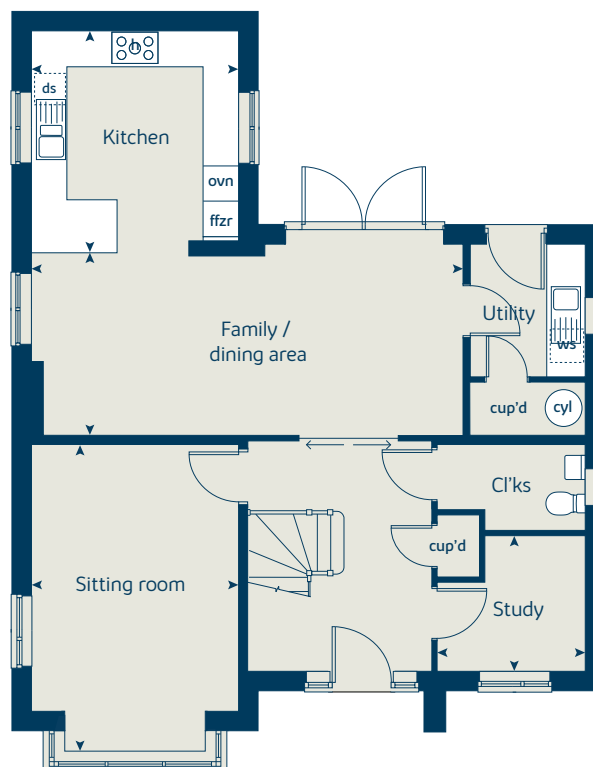
Window positions may vary from plot to plot. See sales consultant for details on individual plot working drawings.

JP 06.2024

First floor



Ground floor





The Aspen

4 bedroom home

bovishomes.co.uk

**Bovis
Homes** 

The Aspen

4 bedroom home

Ground floor	metres	feet / inches
Kitchen/Dining	7.77 x 3.58	25'6" x 11'9"
Sitting room	5.04 x 3.39	16'6" x 11'1"
Study	2.02 x 2.01	6'8" x 6'7"

First floor

Bedroom 1	4.52m x 3.81m	14'10" x 12'6"
Bedroom 2	3.87m x 3.11m	12'8" x 10'2"
Bedroom 3	4.07m x 2.45m	13'5" x 8'1"
Bedroom 4	3.61m x 2.45m	11'10" x 8'1"

ovn	oven	w	wardrobe
h	hob	cup'd	cupboard
ds	dishwasher space	cyl	hot water cylinder
ws	washing machine space	◀ ▶	measuring points
ffzr	fridge freezer		

The Aspen

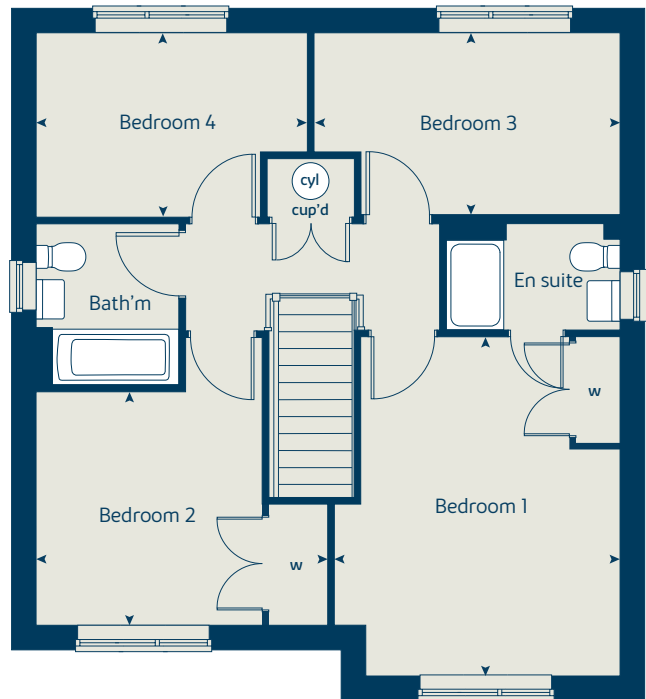
The floorplan has been produced for illustrative purposes only. Room sizes shown are between arrow points as indicated on plan. The dimensions have tolerances of + or -50mm and should not be used other than for general guidance. If specific dimensions are required, enquiries should be made to the sales consultant. The floor plans shown are not to scale. Measurements are based on the original drawings. Slight variations may occur during construction.

The illustrations shown are computer generated impressions of how the property may look and are indicative only. External details or finishes may vary on individual plots and homes may be built in either detached or attached styles depending on the development layout. Exact specifications, window styles and whether a property is left or right handed may differ from plot to plot. Please speak to our sales consultant for specific plot details.

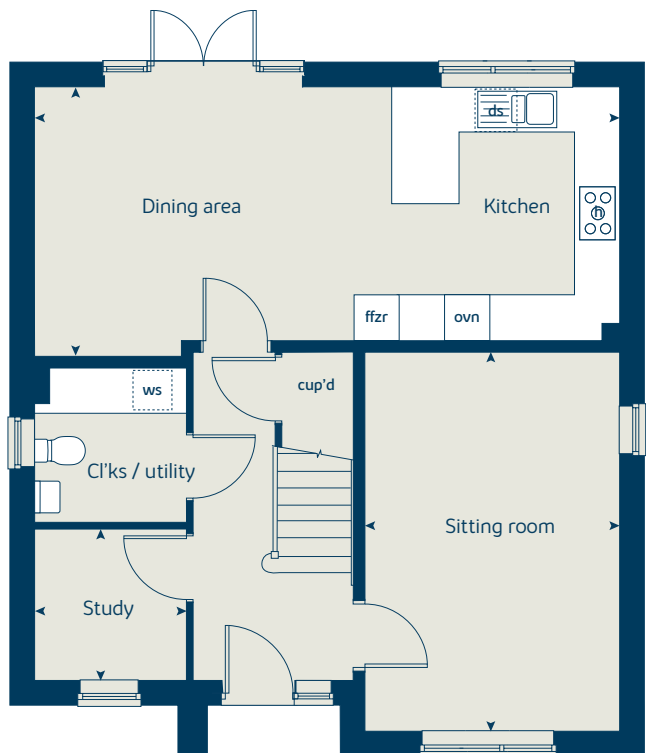
Window positions may vary from plot to plot. See sales consultant for details on individual plot working drawings.

JP 06.2024

First floor



Ground floor





The Birch

5 bedroom home

bovishomes.co.uk

**Bovis
Homes** 

The Birch

5 bedroom home

Ground floor	metres	feet / inches
Kitchen/Dining	9.12 x 4.54	29'11" x 14'11"
Sitting room	4.97 x 3.61	16'4" x 11'10"
Study / dining room	3.41 x 3.00	11'3" x 9'10"

First floor	metres	feet / inches
Bedroom 1	3.57 x 3.61	11'8" x 11'10"
Bedroom 2	3.92 x 2.90	12'10" x 9'6"
Bedroom 3	3.06 x 2.75	10'1" x 9'0"
Bedroom 4	3.33 x 2.83	10'11" x 9'3"
Bedroom 5	2.83 x 2.70	9'3" x 8'11"

ovn	oven	cyl	hot water cylinder
h	hob	cup'd	cupboard
ds	dishwasher	w	wardrobe
ws	washing machine space	◀ ▶	measuring points
ffzr	fridge freezer		

The Birch

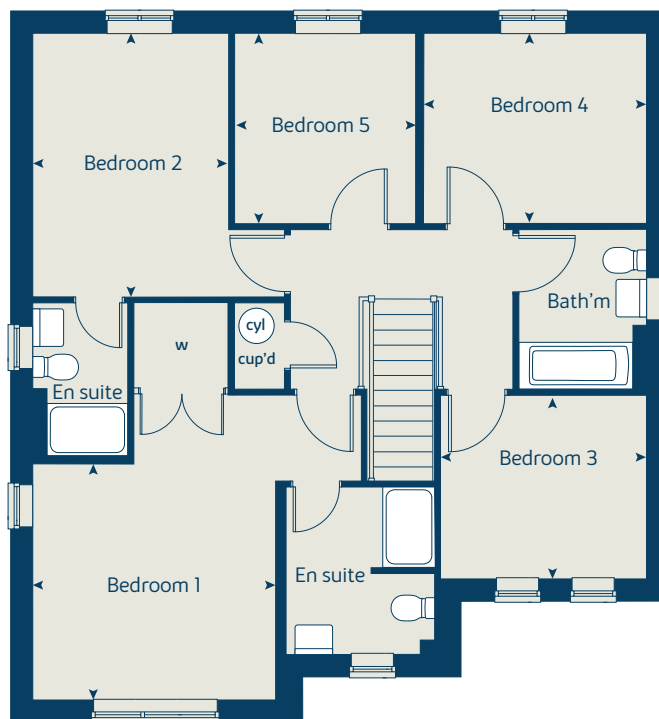
The floorplan has been produced for illustrative purposes only. Room sizes shown are between arrow points as indicated on plan. The dimensions have tolerances of + or -50mm and should not be used other than for general guidance. If specific dimensions are required, enquiries should be made to the sales consultant. The floor plans shown are not to scale. Measurements are based on the original drawings. Slight variations may occur during construction.

The illustrations shown are computer generated impressions of how the property may look and are indicative only. External details or finishes may vary on individual plots and homes may be built in either detached or attached styles depending on the development layout. Exact specifications, window styles and whether a property is left or right handed may differ from plot to plot. Please speak to our sales consultant for specific plot details.

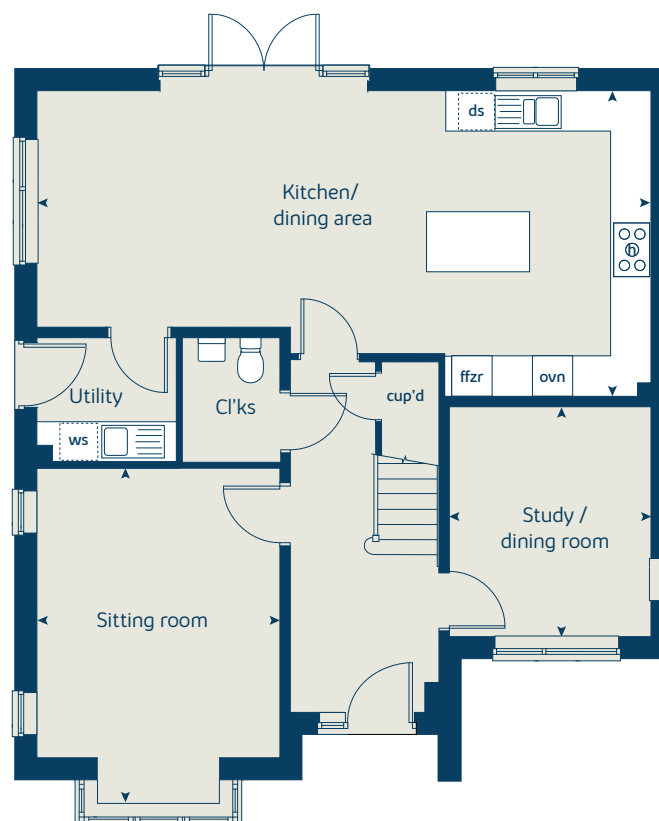
Window positions may vary from plot to plot. See sales consultant for details on individual plot working drawings.

JP 06.2024

First floor



Ground floor





The Yew

5 bedroom home

bovishomes.co.uk

**Bovis
Homes** 

The Yew

5 bedroom home

Ground floor	metres	feet / inches
Kitchen	3.71 x 3.16	12' 2" x 10' 5"
Family / Dining	4.74 x 3.16	15' 7" x 10' 5"
Sitting room	4.68 x 3.17	15' 5" x 10' 5"
Study	3.17 x 1.76	10' 5" x 5' 9"

First floor	metres	feet / inches
Bedroom 1	4.17 x 3.73	13' 8" x 12' 3"
Bedroom 3	4.19 x 3.22	13' 9" x 10' 7"
Bedroom 5	2.87 x 2.27	9' 5" x 7' 5"

Second floor	metres	feet / inches
Bedroom 2	5.04 x 3.22	16' 6" x 10' 7"
Bedroom 4	3.73 x 2.86	12' 3" x 9' 5"

ovn	oven	cup'd	cupboard
h	hob	cyl	hot water cylinder
ds	dishwasher	w	wardrobe
ws	washing machine space	< >	measuring points
ffzr	fridge freezer		

The Yew

The floorplan has been produced for illustrative purposes only. Room sizes shown are between arrow points as indicated on plan. The dimensions have tolerances of + or -50mm and should not be used other than for general guidance. If specific dimensions are required, enquiries should be made to the sales consultant. The floor plans shown are not to scale. Measurements are based on the original drawings. Slight variations may occur during construction.

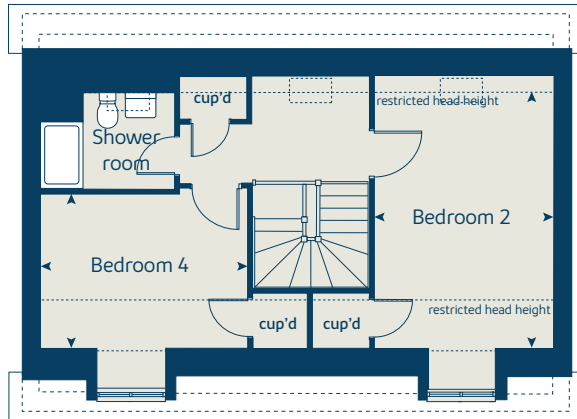
The illustrations shown are computer generated impressions of how the property may look and are indicative only. External details or finishes may vary on individual plots and homes may be built in either detached or attached styles depending on the development layout. Exact specifications, window styles and whether a property is left or right handed may differ from plot to plot. Please speak to our sales consultant for specific plot details.

Window positions may vary from plot to plot. See sales consultant for details on individual plot working drawings.

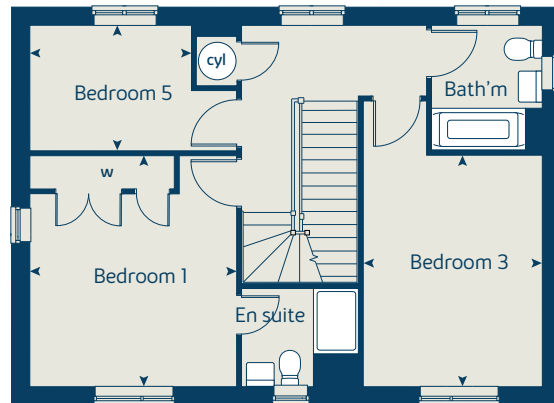
JP 06.2024



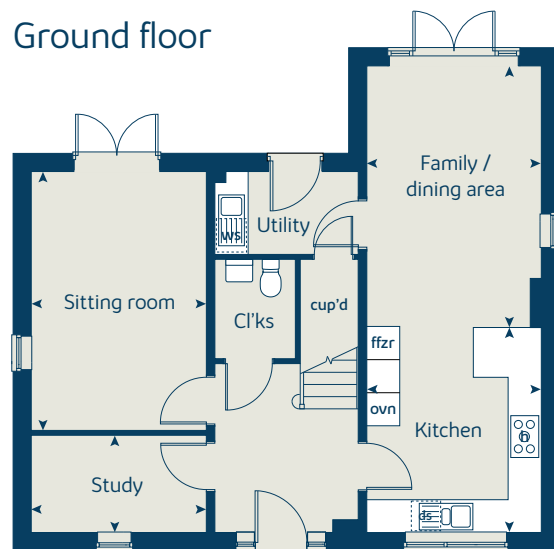
Second floor



First floor



Ground floor





The Lime

5 bedroom home

bovishomes.co.uk

**Bovis
Homes** 

The Lime

5 bedroom home

Ground floor	metres	feet / inches
Kitchen	4.24 x 3.92	13' 11" x 12' 10"
Family / Dining	3.79 x 3.58	12' 5" x 11' 9"
Sitting room	5.39 x 3.86	17' 8" x 12' 8"
Dining room	3.86 x 2.77	12' 8" x 9' 1"
Study	3.58 x 2.55	11' 9" x 8' 5"

First floor	metres	feet / inches
Bedroom 1	4.07 x 3.75	13' 5" x 12' 4"
Bedroom 2	4.07 x 3.57	13' 5" x 11' 9"
Bedroom 3	3.26 x 3.26	10' 9" x 10' 8"
Bedroom 4	3.56 x 2.82	11' 8" x 9' 3"
Bedroom 5	2.85 x 2.66	9' 4" x 8' 9"

ovn	oven	cyl	hot water cylinder
h	hob	w	wardrobe
dw	dishwasher	cup'd	cupboard
ws	washing machine space	◀ ▶	measuring points
ffzr	fridge freezer		

The Lime

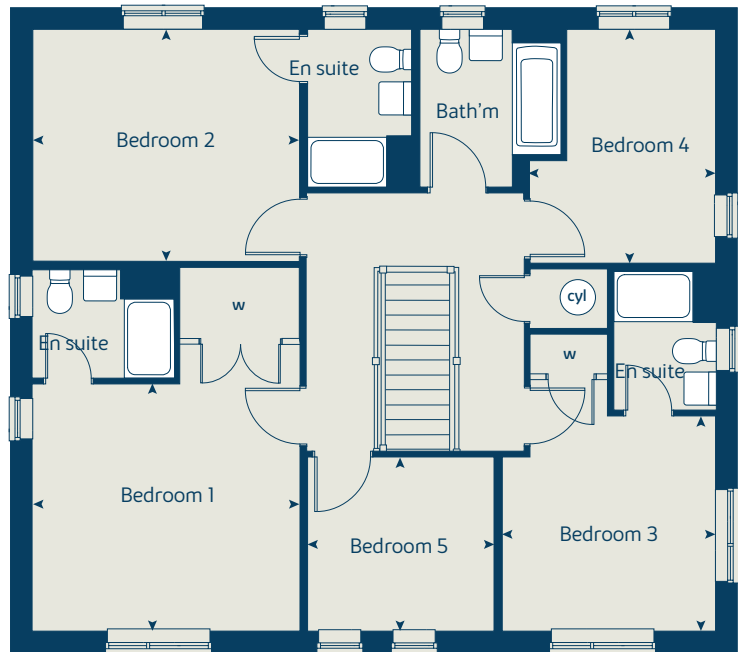
The floorplan has been produced for illustrative purposes only. Room sizes shown are between arrow points as indicated on plan. The dimensions have tolerances of + or -50mm and should not be used other than for general guidance. If specific dimensions are required, enquiries should be made to the sales consultant. The floor plans shown are not to scale. Measurements are based on the original drawings. Slight variations may occur during construction.

The illustrations shown are computer generated impressions of how the property may look and are indicative only. External details or finishes may vary on individual plots and homes may be built in either detached or attached styles depending on the development layout. Exact specifications, window styles and whether a property is left or right handed may differ from plot to plot. Please speak to our sales consultant for specific plot details.

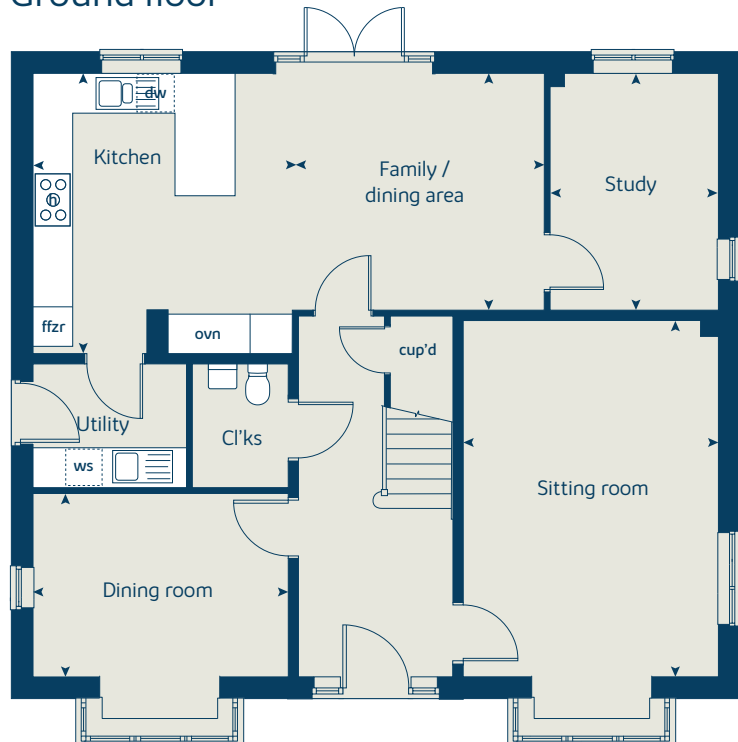
Window positions may vary from plot to plot. See sales consultant for details on individual plot working drawings

JP 06.2024

First floor



Ground floor





Hollin Bank

Littleborough

Specification

bovishomes.co.uk

**Bovis
Homes** 

Hollin Bank

Littleborough

Use this guide to see what features are included in your new home. Your sales consultant will be happy to discuss the **Select** range of extras available.



Kitchen

- 2 bedroom
The Butterworth
- 3 bedroom
The Newall
The Rowan
The Hazel
The Cypress
The Spruce
The Jessop
The Poplar
- 4 bedroom
The Juniper
The Chestnut
The Chestnut II
The Aspen
The Willow
The Stansfield
The Maple
- 5 bedroom
The Birch
The Yew
The Lime

Choice of standard fitted kitchen (doors & worktops)*	■	■ ■ ■ ■ ■ ■ ■	■ ■ ■ ■ ■ ■ ■	■ ■ ■ ■ ■ ■ ■
Choice of premium fitted kitchen (doors & worktops)*				■ ■ ■
Stainless steel sink and drainer (single bowl) with chrome mixer tap	■			
Stainless steel sink and drainer (single and a half bowl) with chrome mixer tap		■ ■ ■ ■ ■ ■ ■	■ ■ ■ ■ ■ ■ ■	■ ■ ■
Stainless steel sink and drainer (single bowl) with chrome mixer tap in utility				■ ■ ■
Indesit Electric hob (60cm) with built-in single underoven, with stainless steel splashback and curved glass chimney hood.	■	■ ■ ■ ■ ■ ■ ■		
Hotpoint Electric hob (75 cm) with built-in double high level oven, with glass splashback and curved glass chimney hood.			■ ■ ■ ■ ■ ■ ■	
Bosch Electric (75cm) hob with built-in double high level oven, with glass splashback and stainless steel pyramid chimney hood				■ ■
Bosch Electric (75cm) hob with two built-in single ovens at high level, with glass splashback and stainless steel chimney hood				■
Pendant light fitting	■	■ ■ ■ ■ ■ ■ ■	■ ■ ■ ■ ■ ■ ■	■ ■ ■
Pre-wired for under-unit lighting option	■	■ ■ ■ ■ ■ ■ ■	■ ■ ■ ■ ■ ■ ■	■ ■ ■
LED under-unit flexible strip lighting				■ ■ ■
Fridge/freezer space	■	■ ■ ■ ■ ■ ■ ■		
Indesit Integrated 50/50 fridge-freezer			■ ■ ■ ■ ■ ■ ■	■ ■ ■
Space for integrated dishwasher with plumbing and electrics	■	■ ■ ■ ■ ■ ■ ■	■ ■ ■ ■ ■ ■ ■	
Indesit Integrated dishwasher				■ ■ ■
Space for washing machine with plumbing and electrics in kitchen	■	■ ■ ■ ■ ■ ■ ■	■ ■ ■ ■ ■ ■ ■	
Space for washing machine with plumbing and electrics in utility			■ ■ ■	■ ■ ■

Bathrooms and en suite(s)

Contemporary white sanitaryware	■	■ ■ ■ ■ ■ ■ ■	■ ■ ■ ■ ■ ■ ■	■ ■ ■
Close coupled WC to cloakroom		■ ■ ■ ■ ■ ■ ■	■ ■ ■ ■ ■ ■ ■	■ ■ ■
Handheld hair wash attachment	■	■ ■ ■ ■ ■ ■ ■	■ ■ ■ ■ ■ ■ ■	■ ■ ■
Low profile shower tray with glass enclosure to bedroom 1 ensuite	■	■ ■ ■ ■ ■ ■ ■	■ ■ ■ ■ ■ ■ ■	■ ■ ■
Second shower ensuite to selected bedrooms				■ ■
Choice of standard Porcelanosa wall tiling (splashback, 450mm over bath, and full-height to shower cubicle)*	■	■ ■ ■ ■ ■ ■ ■	■ ■ ■ ■ ■ ■ ■	
Choice of standard Porcelanosa wall tiling (half-height to walls with fitted sanitary ware, half-height over bath, and full-height to shower cubicle)*				■ ■ ■
Chrome bezel LED bulkhead to bathroom and en suite(s)	■	■ ■ ■ ■ ■ ■ ■	■ ■ ■ ■ ■ ■ ■	■ ■ ■
Chrome towel warmer in bathroom and en suite(s)			■ ■ ■ ■ ■ ■ ■	■ ■ ■

Bedrooms

Built in builders wardrobe to Bedroom 1		■	■ ■ ■ ■ ■ ■ ■	■ ■ ■
Built in builders wardrobe to Bedroom 2			■	
Built in builders wardrobe to Bedroom 3				■

Doors and Windows

Front door with multi-point security locking system and security chain	■	■ ■ ■ ■ ■ ■ ■	■ ■ ■ ■ ■ ■ ■	■ ■ ■
Chrome plated front door numerals	■	■ ■ ■ ■ ■ ■ ■	■ ■ ■ ■ ■ ■ ■	■ ■ ■
PVCu double glazing to windows	■	■ ■ ■ ■ ■ ■ ■	■ ■ ■ ■ ■ ■ ■	■ ■ ■
Double glazed PVCu French doors	■	■ ■ ■ ■ ■ ■ ■	■ ■ ■ ■ ■ ■ ■	■ ■ ■
Internal Cottage style pre-primed doors with Polished Chrome finish handles	■	■ ■ ■ ■ ■ ■ ■	■ ■ ■ ■ ■ ■ ■	■ ■ ■
Paving outside French doors and path to garage personnel door (where applicable)	■	■ ■ ■ ■ ■ ■ ■	■ ■ ■ ■ ■ ■ ■	■ ■ ■

General

EV Charging Point	■	■ ■ ■ ■ ■ ■ ■	■ ■ ■ ■ ■ ■ ■	■ ■ ■
White painted walls and smooth white ceilings	■	■ ■ ■ ■ ■ ■ ■	■ ■ ■ ■ ■ ■ ■	■ ■ ■
Combined usb/double sockets in kitchen and bedroom 1	■	■ ■ ■ ■ ■ ■ ■	■ ■ ■ ■ ■ ■ ■	■ ■ ■
Multi-media point in living room	■	■ ■ ■ ■ ■ ■ ■	■ ■ ■ ■ ■ ■ ■	■ ■ ■
TV point to bedroom 1 and family room (where applicable)	■	■ ■ ■ ■ ■ ■ ■	■ ■ ■ ■ ■ ■ ■	■ ■ ■
Master telephone socket to lounge and study where applicable	■	■ ■ ■ ■ ■ ■ ■	■ ■ ■ ■ ■ ■ ■	■ ■ ■
Air Source Heat Pump	■	■ ■ ■ ■ ■ ■ ■	■ ■ ■ ■ ■ ■ ■	■ ■ ■
Thermostatic valves to all radiators (with the exception of rooms with separate thermostat control)	■	■ ■ ■ ■ ■ ■ ■	■ ■ ■ ■ ■ ■ ■	■ ■ ■
Fitted external tap	■	■ ■ ■ ■ ■ ■ ■	■ ■ ■ ■ ■ ■ ■	■ ■ ■
External light fitted to front porch and wiring for external light to rear door	■	■ ■ ■ ■ ■ ■ ■	■ ■ ■ ■ ■ ■ ■	■ ■ ■
Mains wired smoke detectors with battery back-up	■	■ ■ ■ ■ ■ ■ ■	■ ■ ■ ■ ■ ■ ■	■ ■ ■
Battery powered Carbon Monoxide detector (wall mounted) to be provided for each floor	■	■ ■ ■ ■ ■ ■ ■	■ ■ ■ ■ ■ ■ ■	■ ■ ■
Power and lighting to 'on plot' garage (where applicable)	■	■ ■ ■ ■ ■ ■ ■	■ ■ ■ ■ ■ ■ ■	■ ■ ■
Enclosed fenced rear garden, and garden gate (where applicable).	■	■ ■ ■ ■ ■ ■ ■	■ ■ ■ ■ ■ ■ ■	■ ■ ■
Landscaped front gardens	■	■ ■ ■ ■ ■ ■ ■	■ ■ ■ ■ ■ ■ ■	■ ■ ■
NHBC Buildmark cover	■	■ ■ ■ ■ ■ ■ ■	■ ■ ■ ■ ■ ■ ■	■ ■ ■
First two years' customer service support from Bovis Homes	■	■ ■ ■ ■ ■ ■ ■	■ ■ ■ ■ ■ ■ ■	■ ■ ■

■ Fitted as standard - included in the property
 * Subject to stage of construction

- 2 bedroom
The Butterworth
- 3 bedroom
The Newall
The Rowan
The Hazel
The Cypress
The Spruce
The Jessop
The Poplar
- 4 bedroom
The Juniper
The Chestnut
The Chestnut II
The Aspen
The Willow
The Stansfield
The Maple
- 5 bedroom
The Birch
The Yew
The Lime

So much choice...

Part of the excitement of buying a new home is the thrill of being the first person to live in the property and having a brand new contemporary kitchen and modern bathroom. Our premium brand partners ensure that all of our fixtures and fittings comply with the latest Government building regulations and only branded appliances are installed in your new home.

Once you know what specification comes included, you'll have a choice from our specially selected tiles for your kitchen and bathrooms, as well as kitchen worktops and cupboard doors. You can then use the Bovis Homes **Select** brochure to add the finishing touches to your home to make it extra special for you!

From personalising your bathrooms with stunning ceramics, or adding smooth sliding wardrobes to your master bedroom, there are a wide range of additional options and upgrades available.

The availability of items is subject to the stage of build, and can vary by development and house type. Our sales consultants will be happy to provide guidance.



The specification shown is correct at the time of production. Bovis Homes is continually reviewing and updating the specification on all house / apartment types and therefore reserves the right to change specification details. Photographs depict typical Bovis Homes interiors and may include optional upgrades. For full details regarding the current specification and finishes, please speak to our sales consultant.

When you have finished with this leaflet please recycle it.

JP 06.2024

**Bovis
Homes** 