

Great Oldbury

Stonehouse



Great Oldbury

Stonehouse

3 bedroom homes

- The Apple
- The Hazel
- The Spruce
- The Cypress
- The Beech
- Sage Home

4 bedroom homes

- The Juniper
- The Chestnut
- The Aspen
- The Alder
- The Orchard
- Sage Home

Pre-sold homes

- 1 and 2 bedroom apartments
- 2 bedroom homes
- 3 bedroom homes
- 4 bedroom homes

Sage Homes
built by Bovis Homes

- bcp bin collection point
- bs bin store
- cs cycle store
- v visitor space





The Apple

3 bedroom home

bovishomes.co.uk

**Bovis
Homes** 

The Apple

3 bedroom home

Ground floor	metres	feet / inches
Kitchen / dining room	5.19 x 3.64	17' 0" x 11' 11"
Sitting room	4.17 x 3.69	13' 8" x 12' 1"

First floor

Bedroom 1	4.15 x 2.95	13' 7" x 9' 8"
Bedroom 2	5.19 x 2.55	17' 0" x 8' 5"
Bedroom 3	4.15 x 2.15	13' 7" x 7' 1"

ovn	oven	ffzs	fridge freezer space
h	hob	cup'd	cupboard
ds	dishwasher space	◀ ▶	measuring points
ws	washing machine space		

The floorplan has been produced for illustrative purposes only. Room sizes shown are between arrow points as indicated on plan. The dimensions have tolerances of + or -50mm and should not be used other than for general guidance. If specific dimensions are required, enquiries should be made to the sales consultant. The floor plans shown are not to scale. Measurements are based on the original drawings. Slight variations may occur during construction.

The illustrations shown are computer generated impressions of how the property may look and are indicative only. External details or finishes may vary on individual plots and homes may be built in either detached or attached styles depending on the development layout. Exact specifications, window styles and whether a property is left or right handed may differ from plot to plot. Please speak to our sales consultant for specific plot details.

- * Windows apply to selected plots only. Please see sales consultant for further details.

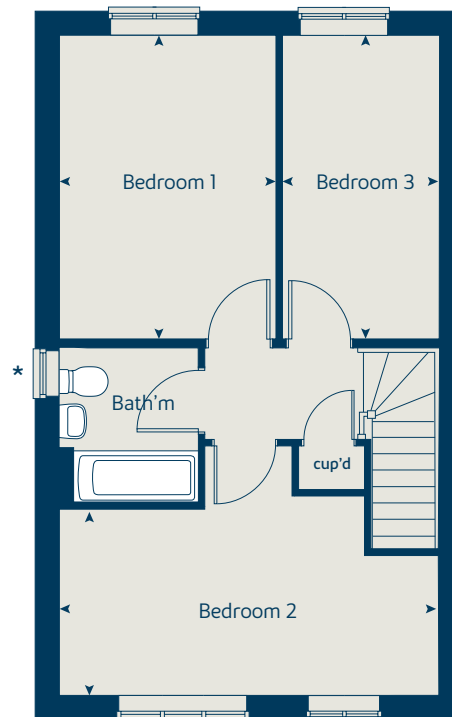
The Apple | S325 Stonehouse

Produced by the Vistry Group Design Studio.

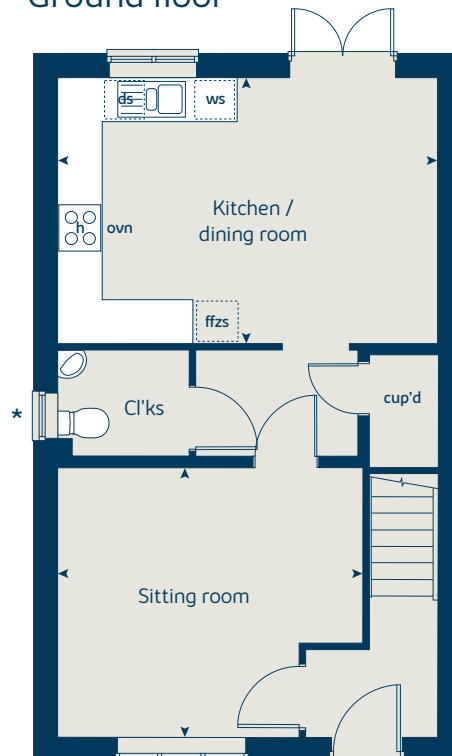
When you have finished with this leaflet please recycle it.

130-HSTN2 DS08288 / 07.24

First floor



Ground floor





The Hazel

3 bedroom home

bovishomes.co.uk

**Bovis
Homes** 

The Hazel

3 bedroom home

Ground floor	metres	feet / inches
Kitchen / dining room	5.19 x 2.99	17' 0" x 9' 10"
Sitting room	4.17 x 3.66	13' 8" x 12' 0"

First floor

Bedroom 1	3.54 x 3.29	11' 7" x 10' 9"
Bedroom 2	2.95 x 2.72	9' 8" x 8' 11"
Bedroom 3	3.48 x 2.15	11' 5" x 7' 1"

ovn	oven	ffzs	fridge freezer space
h	hob	cup'd	cupboard
ds	dishwasher space	◀ ▶	measuring points
ws	washing machine space		

The floorplan has been produced for illustrative purposes only. Room sizes shown are between arrow points as indicated on plan. The dimensions have tolerances of + or -50mm and should not be used other than for general guidance. If specific dimensions are required, enquiries should be made to the sales consultant. The floor plans shown are not to scale. Measurements are based on the original drawings. Slight variations may occur during construction.

The illustrations shown are computer generated impressions of how the property may look and are indicative only. External details or finishes may vary on individual plots and homes may be built in either detached or attached styles depending on the development layout. Exact specifications, window styles and whether a property is left or right handed may differ from plot to plot. Please speak to our sales consultant for specific plot details.

* Windows apply to selected plots only.
Please see sales consultant for further details

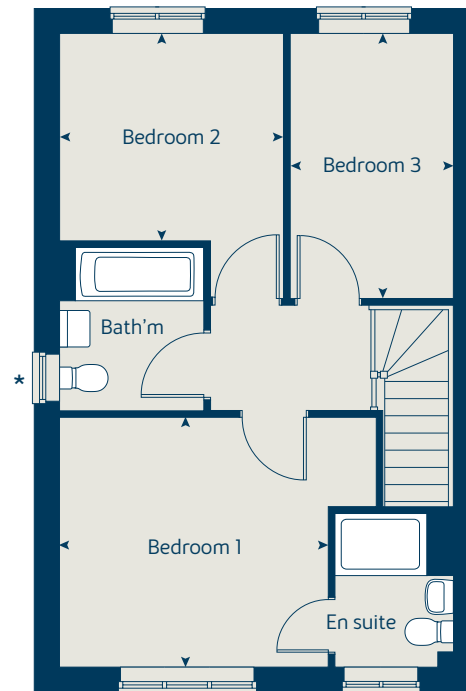
The Hazel | X305 Stonehouse

Produced by the Vistry Group Design Studio.

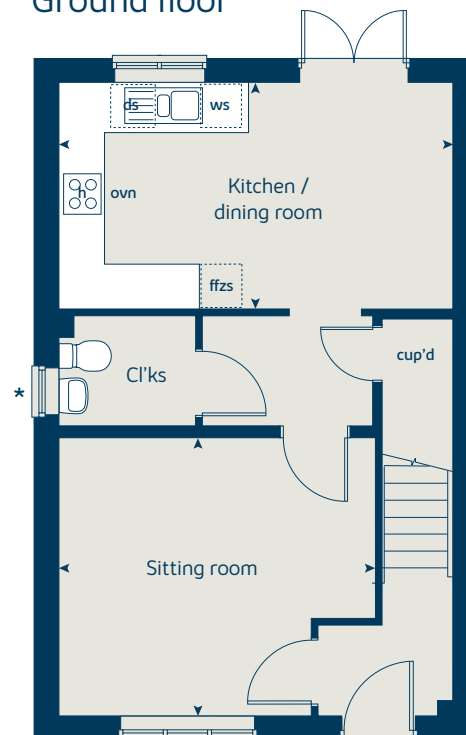
When you have finished with this leaflet please recycle it.

130-HSTN2 DS08288 / 07.24

First floor



Ground floor





The Spruce

3 bedroom home

bovishomes.co.uk

**Bovis
Homes** 

The Spruce

3 bedroom home

Ground floor	metres	feet / inches
Kitchen	3.16 x 2.69	10' 4" x 8' 10"
Dining area	3.14 x 2.36	10' 4" x 7' 9"
Sitting room	5.53 x 3.32	18' 2" x 10' 11"

First floor	metres	feet / inches
Bedroom 1	3.34 x 2.94	10' 11" x 9' 8"
Bedroom 2	3.60 x 3.27	11' 10" x 10' 9"
Bedroom 3	3.63 x 2.17	11' 11" x 7' 2"

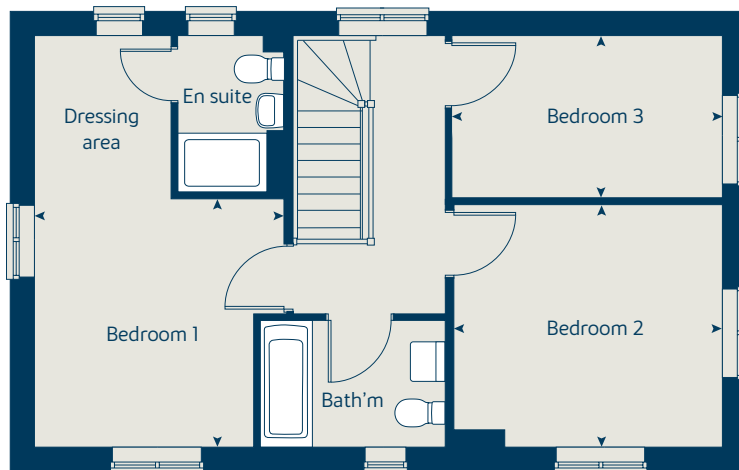
ovn	oven	ffzs	fridge freezer space
h	hob	cup'd	cupboard
ds	dishwasher space	◀ ▶	measuring points
ws	washing machine space		

The floorplan has been produced for illustrative purposes only. Room sizes shown are between arrow points as indicated on plan. The dimensions have tolerances of + or -50mm and should not be used other than for general guidance. If specific dimensions are required, enquiries should be made to the sales consultant. The floor plans shown are not to scale. Measurements are based on the original drawings. Slight variations may occur during construction.

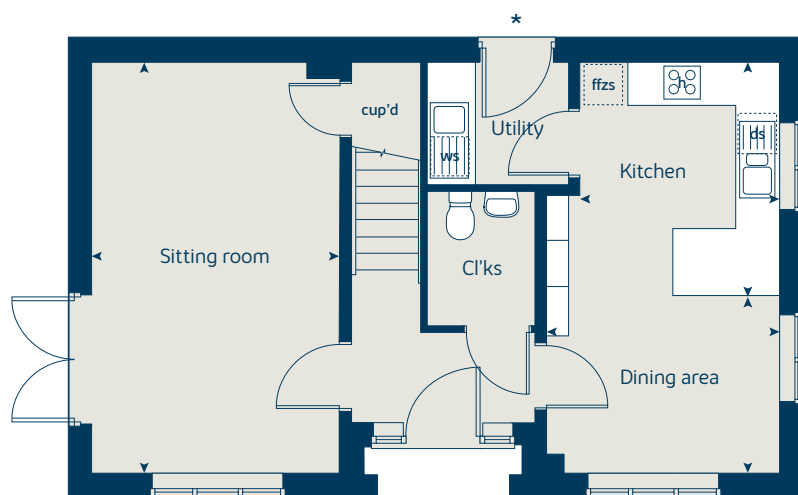
The illustrations shown are computer generated impressions of how the property may look and are indicative only. External details or finishes may vary on individual plots and homes may be built in either detached or attached styles depending on the development layout. Exact specifications, window styles and whether a property is left or right handed may differ from plot to plot. Please speak to our sales consultant for specific plot details.

* Door applies to selected plots only. Please see sales consultant for further details.

First floor



Ground floor



The Spruce | X307 (IF) Stonehouse

Produced by the Vistry Group Design Studio.

When you have finished with this leaflet please recycle it.

130-HSTN2_DS08288 / 07.24



The Spruce II

3 bedroom home

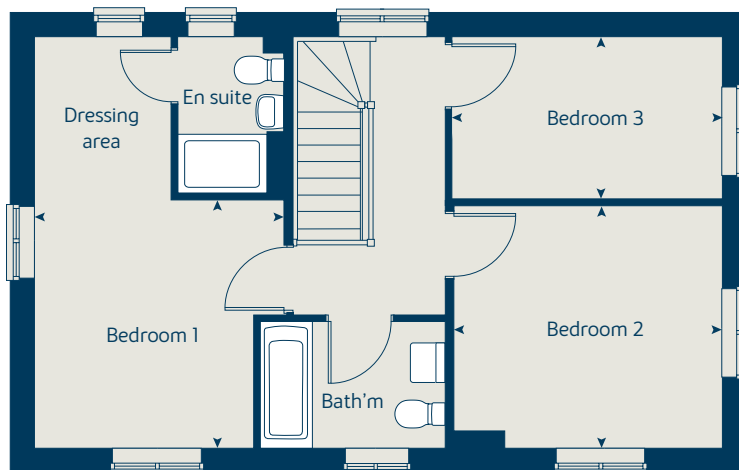
bovishomes.co.uk

**Bovis
Homes** 

The Spruce II

3 bedroom home

First floor



Ground floor	metres	feet / inches
Kitchen	3.16 x 2.69	10' 4" x 8' 10"
Dining area	3.14 x 2.36	10' 4" x 7' 9"
Sitting room	5.53 x 3.32	18' 2" x 10' 11"

First floor

Bedroom 1	3.34 x 2.94	10' 11" x 9' 8"
Bedroom 2	3.60 x 3.27	11' 10" x 10' 9"
Bedroom 3	3.63 x 2.17	11' 11" x 7' 2"

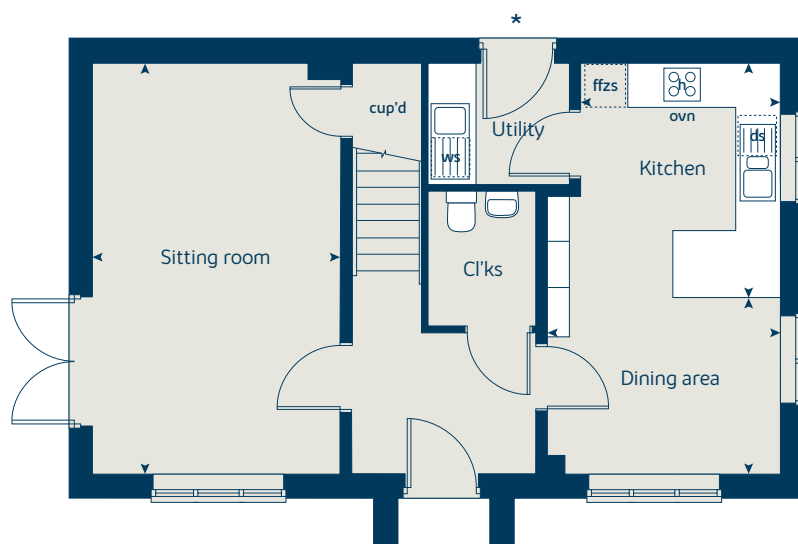
ovn	oven	ffzs	fridge freezer space
h	hob	cup'd	cupboard
ds	dishwasher space	◀ ▶	measuring points
ws	washing machine space		

The floorplan has been produced for illustrative purposes only. Room sizes shown are between arrow points as indicated on plan. The dimensions have tolerances of + or -50mm and should not be used other than for general guidance. If specific dimensions are required, enquiries should be made to the sales consultant. The floor plans shown are not to scale. Measurements are based on the original drawings. Slight variations may occur during construction.

The illustrations shown are computer generated impressions of how the property may look and are indicative only. External details or finishes may vary on individual plots and homes may be built in either detached or attached styles depending on the development layout. Exact specifications, window styles and whether a property is left or right handed may differ from plot to plot. Please speak to our sales consultant for specific plot details.

* Door applies to selected plots only. Please see sales consultant for further details.

Ground floor



The Spruce II | X307 (F) Stonehouse

Produced by the Vistry Group Design Studio.

When you have finished with this leaflet please recycle it.

130-HSTN2 DS08288 / 07.24



The Cypress

3 bedroom home

bovishomes.co.uk

**Bovis
Homes** 

The Cypress

3 bedroom home

Ground floor	metres	feet / inches
Kitchen / dining area	5.52 x 3.12	18' 1" x 10' 2"
Sitting room	4.41 x 3.40	14' 6" x 11' 2"

First floor

Bedroom 1	4.09 x 3.28	13' 5" x 10' 9"
Bedroom 2	3.28 x 2.83	10' 9" x 9' 3"
Bedroom 3	3.52 x 2.16	11' 7" x 7' 1"

ovn	oven	ffzs	fridge freezer space
h	hob	cup'd	cupboard
ds	dishwasher space	◀ ▶	measuring points
ws	washing machine space		

The floorplan has been produced for illustrative purposes only. Room sizes shown are between arrow points as indicated on plan. The dimensions have tolerances of + or -50mm and should not be used other than for general guidance. If specific dimensions are required, enquiries should be made to the sales consultant. The floor plans shown are not to scale. Measurements are based on the original drawings. Slight variations may occur during construction.

The illustrations shown are computer generated impressions of how the property may look and are indicative only. External details or finishes may vary on individual plots and homes may be built in either detached or attached styles depending on the development layout. Exact specifications, window styles and whether a property is left or right handed may differ from plot to plot. Please speak to our sales consultant for specific plot details.

* Windows apply to selected plots only.
Please see sales consultant for further details.

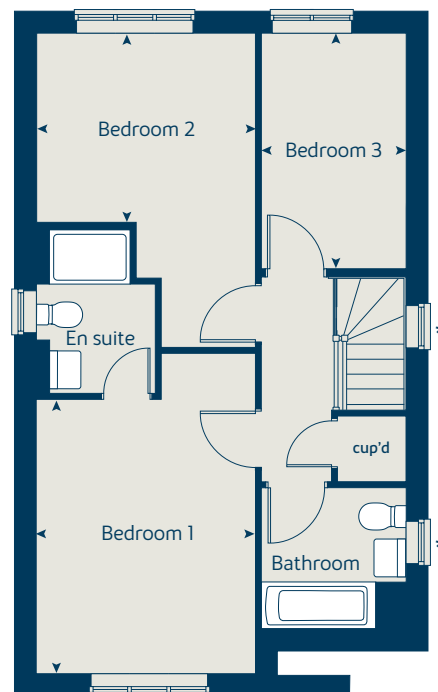
The Cypress | X308 (F) Stonehouse

Produced by the Vistry Group Design Studio.

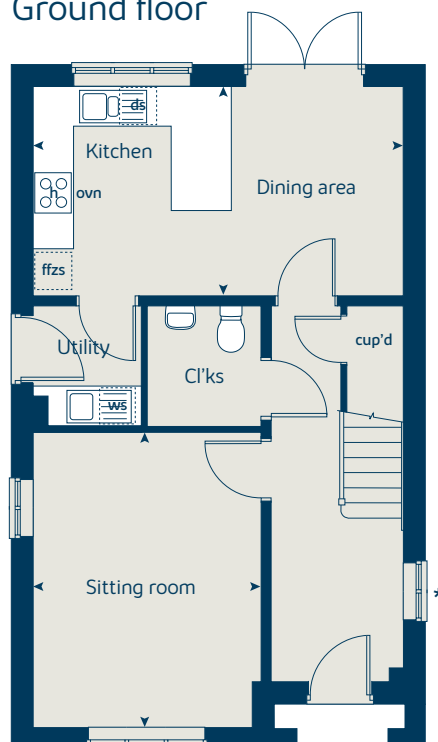
When you have finished with this leaflet please recycle it.

130-HSTN2 DS08288 / 07.24

First floor



Ground floor





The Beech

3 bedroom home

bovishomes.co.uk

**Bovis
Homes** 

The Beech

3 bedroom home

Ground floor	metres	feet / inches
Kitchen / dining room	4.74 x 2.91	15' 6" x 9' 7"
Sitting room	4.00 x 3.72	13' 1" x 12' 2"

First floor	metres	feet / inches
Bedroom 2	4.74 x 3.46	15' 7" x 11' 4"
Bedroom 3	3.39 x 2.49	11' 1" x 8' 2"

Second floor	metres	feet / inches
Bedroom 1	3.62 x 3.02	11' 11" x 9' 11"

ovn	oven	ffzs	fridge freezer space
h	hob	cup'd	cupboard
ds	dishwasher space	< >	measuring points
ws	washing machine space		

The floorplan has been produced for illustrative purposes only. Room sizes shown are between arrow points as indicated on plan. The dimensions have tolerances of + or -50mm and should not be used other than for general guidance. If specific dimensions are required, enquiries should be made to the sales consultant. The floor plans shown are not to scale. Measurements are based on the original drawings. Slight variations may occur during construction.

The illustrations shown are computer generated impressions of how the property may look and are indicative only. External details or finishes may vary on individual plots and homes may be built in either detached or attached styles depending on the development layout. Exact specifications, window styles and whether a property is left or right handed may differ from plot to plot. Please speak to our sales consultant for specific plot details.

* Windows apply to selected plots only. Please see sales consultant for further details.

** Solar panel service access. Please see sales consultant for further details.

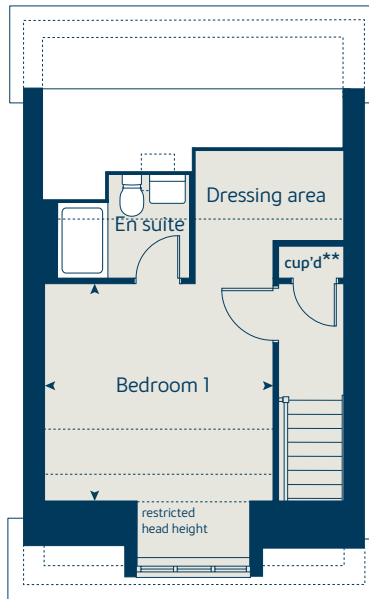
The Beech | X309 Stonehouse

Produced by the Vistry Group Design Studio.

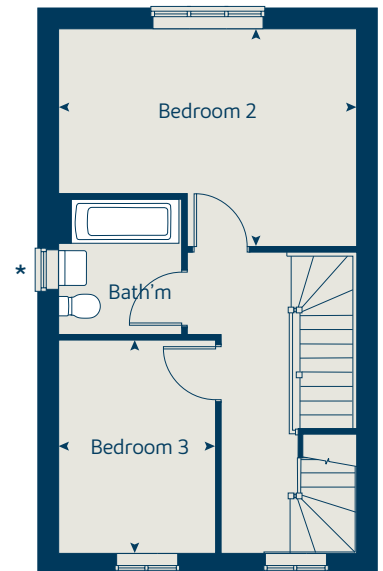
When you have finished with this leaflet please recycle it.

130-HSTN2 DS08288 / 07.24

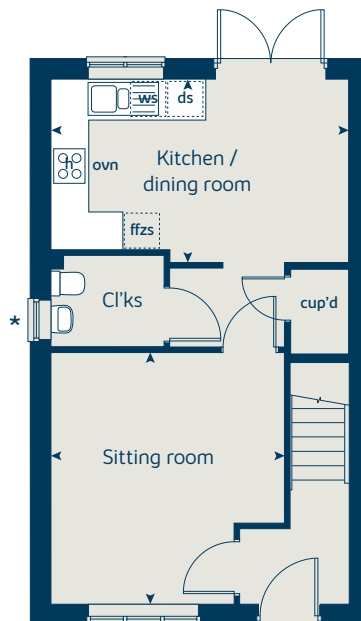
Second floor



First floor



Ground floor





The Juniper

4 bedroom home

bovishomes.co.uk

**Bovis
Homes** 

The Juniper

4 bedroom home

Ground floor	metres	feet / inches
Kitchen / dining / family area	7.21 x 3.52	23' 8" x 11' 7"
Sitting room	4.55 x 3.04	14' 11" x 10' 0"
Study	2.34 x 1.85	7' 8" x 6' 1"

First floor

Bedroom 1	3.47 x 2.85	11' 5" x 9' 4"
Bedroom 2	3.65 x 2.84	12' 0" x 9' 4"
Bedroom 3	3.52 x 2.38	11' 7" x 7' 10"
Bedroom 4	3.61 x 2.38	11' 10" x 7' 10"

ovn	oven	ffzr	fridge freezer
h	hob	ldr	larder
ds	dishwasher space	cup'd	cupboard
ws	washing machine space	< >	measuring points

The floorplan has been produced for illustrative purposes only. Room sizes shown are between arrow points as indicated on plan. The dimensions have tolerances of + or -50mm and should not be used other than for general guidance. If specific dimensions are required, enquiries should be made to the sales consultant. The floor plans shown are not to scale. Measurements are based on the original drawings. Slight variations may occur during construction.

The illustrations shown are computer generated impressions of how the property may look and are indicative only. External details or finishes may vary on individual plots and homes may be built in either detached or attached styles depending on the development layout. Exact specifications, window styles and whether a property is left or right handed may differ from plot to plot. Please speak to our sales consultant for specific plot details.

* Windows apply to selected plots only.
Please see sales consultant for further details.

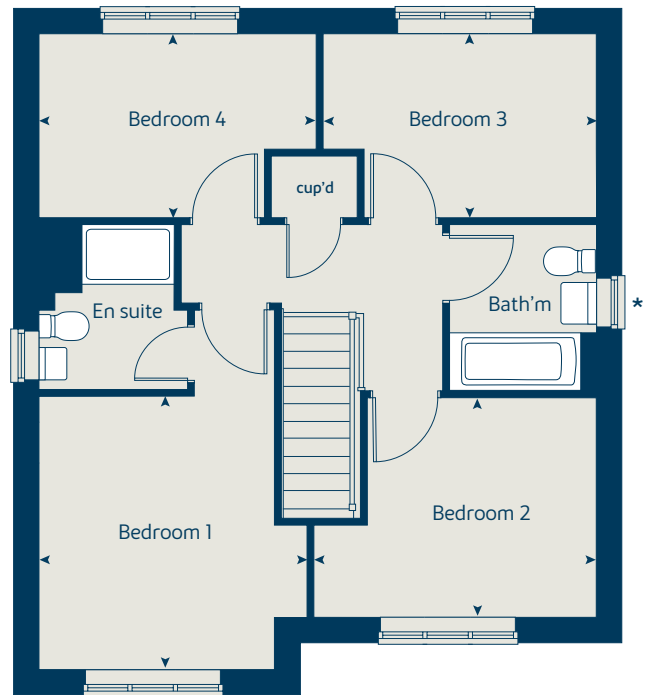
The Juniper | X412 Stonehouse

Produced by the Vistry Group Design Studio.

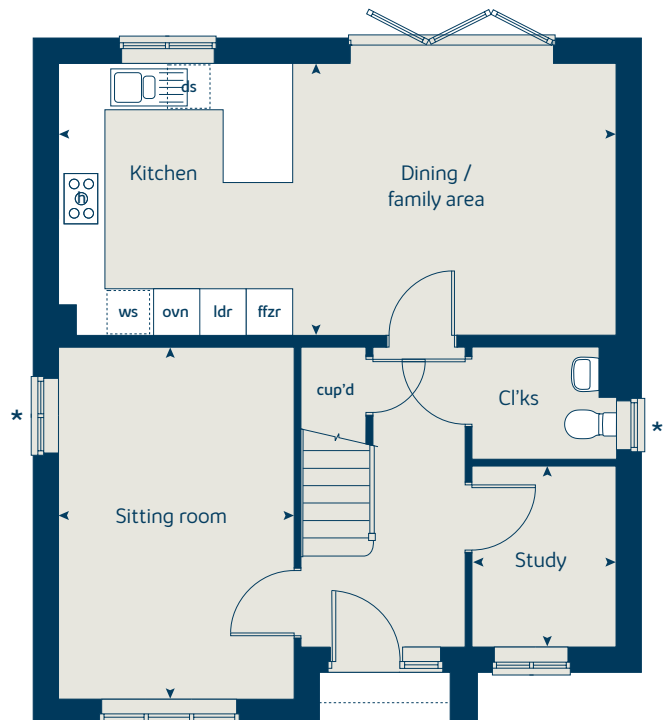
When you have finished with this leaflet please recycle it.

130-HSTN2 DS08288 / 07.24

First floor



Ground floor





The Chestnut

4 bedroom home

bovishomes.co.uk

**Bovis
Homes** 

The Chestnut

4 bedroom home

Ground floor	metres	feet / inches
Kitchen	4.05 x 3.05	13' 3" x 10' 0"
Dining / family area	4.60 x 2.83	15' 1" x 9' 3"
Sitting room	4.98 x 3.41	16' 4" x 11' 2"
Study	3.41 x 1.81	11' 2" x 5' 11"

First floor

Bedroom 1	3.24 x 2.98	10' 7" x 9' 8"
Bedroom 2	3.44 x 3.37	11' 3" x 11' 1"
Bedroom 3	3.42 x 2.31	11' 3" x 7' 7"
Bedroom 4	3.21 x 2.35	10' 6" x 7' 9"

ovn	oven	ffzr	fridge freezer
h	hob	ldr	larder
ds	dishwasher space	cup'd	cupboard
ws	washing machine space	◀ ▶	measuring points

The floorplan has been produced for illustrative purposes only. Room sizes shown are between arrow points as indicated on plan. The dimensions have tolerances of + or -50mm and should not be used other than for general guidance. If specific dimensions are required, enquiries should be made to the sales consultant. The floor plans shown are not to scale. Measurements are based on the original drawings. Slight variations may occur during construction.

The illustrations shown are computer generated impressions of how the property may look and are indicative only. External details or finishes may vary on individual plots and homes may be built in either detached or attached styles depending on the development layout. Exact specifications, window styles and whether a property is left or right handed may differ from plot to plot. Please speak to our sales consultant for specific plot details.

* Windows apply to selected plots only.
Please see sales consultant for further details.

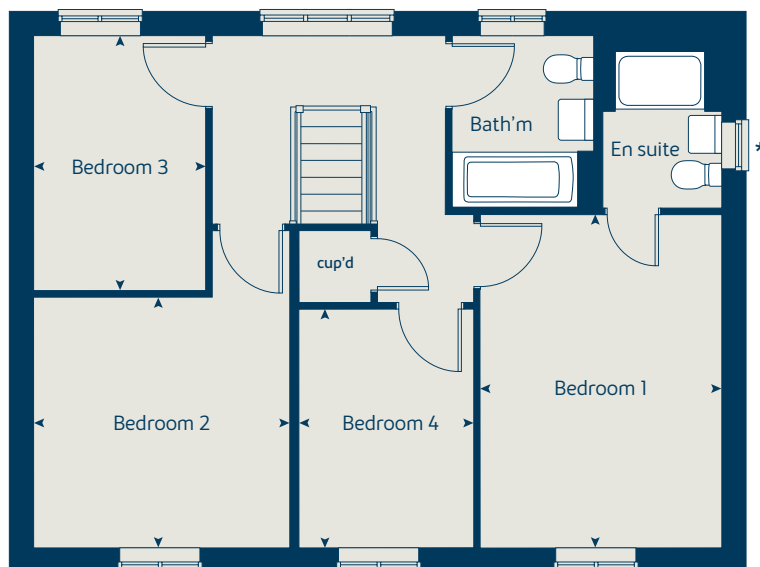
The Chestnut | X413 Stonehouse

Produced by the Vistry Group Design Studio.

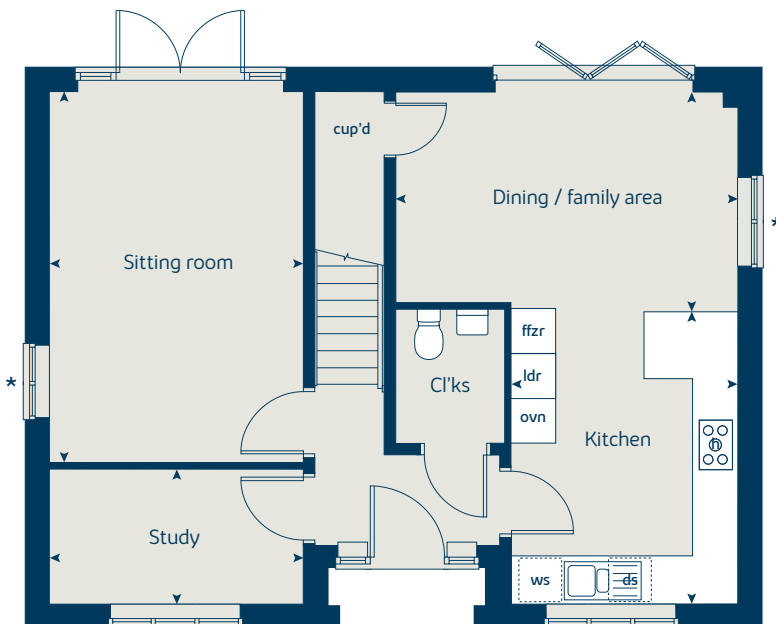
When you have finished with this leaflet please recycle it.

130-HSTN2 DS08288 / 07.24

First floor



Ground floor





The Chestnut II

4 bedroom home

bovishomes.co.uk

**Bovis
Homes** 

The Chestnut II

4 bedroom home

Ground floor	metres	feet / inches
Kitchen	4.05 x 3.05	13' 3" x 10' 0"
Dining / family area	4.60 x 2.83	15' 1" x 9' 3"
Sitting room	4.98 x 3.41	16' 4" x 11' 2"
Study	3.41 x 1.81	11' 2" x 5' 11"

First floor

Bedroom 1	3.24 x 2.98	10' 7" x 9' 8"
Bedroom 2	3.44 x 3.37	11' 3" x 11' 1"
Bedroom 3	3.42 x 2.31	11' 3" x 7' 7"
Bedroom 4	3.21 x 2.35	10' 6" x 7' 9"

ovn	oven	ffzr	fridge freezer
h	hob	ldr	larder
ds	dishwasher space	cup'd	cupboard
ws	washing machine space	< >	measuring points

The floorplan has been produced for illustrative purposes only. Room sizes shown are between arrow points as indicated on plan. The dimensions have tolerances of + or -50mm and should not be used other than for general guidance. If specific dimensions are required, enquiries should be made to the sales consultant. The floor plans shown are not to scale. Measurements are based on the original drawings. Slight variations may occur during construction.

The illustrations shown are computer generated impressions of how the property may look and are indicative only. External details or finishes may vary on individual plots and homes may be built in either detached or attached styles depending on the development layout. Exact specifications, window styles and whether a property is left or right handed may differ from plot to plot. Please speak to our sales consultant for specific plot details.

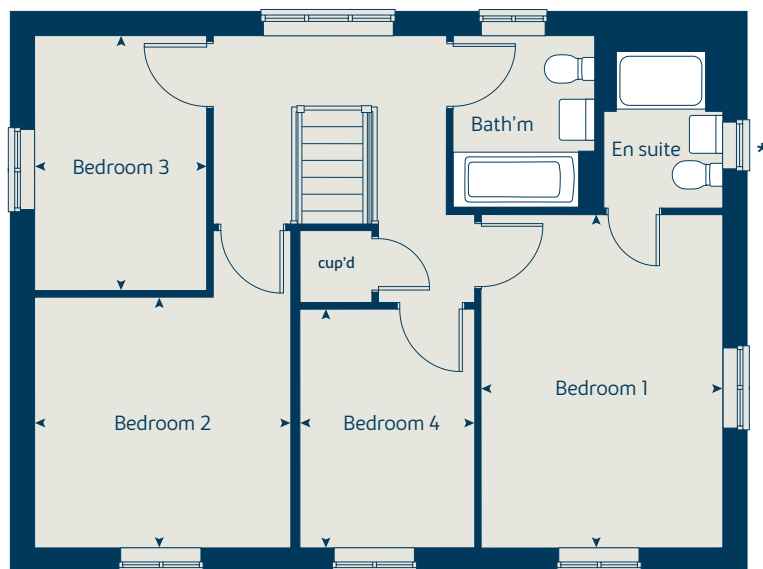
* Windows apply to selected plots only.
Please see sales consultant for further details.

Produced by the Vistry Group Design Studio.

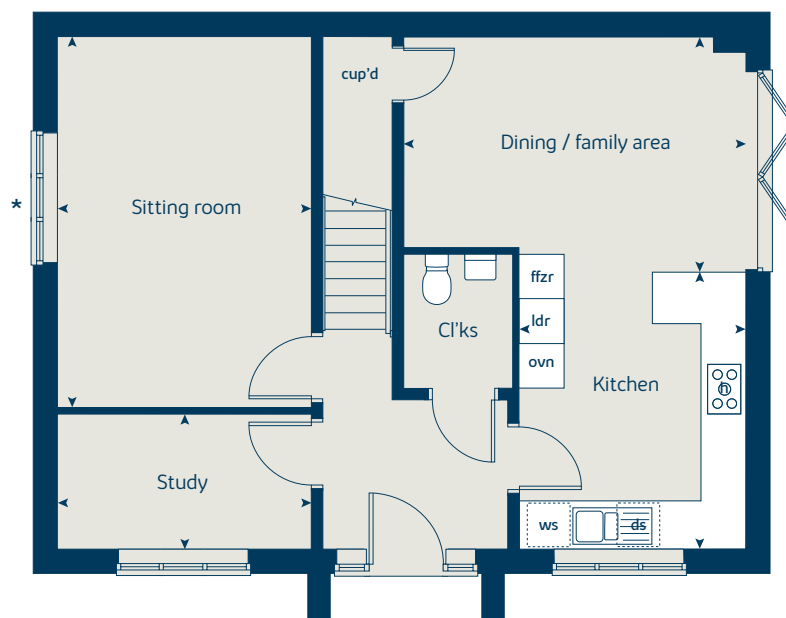
When you have finished with this leaflet please recycle it.

130-HSTN2 DS08288 / 07.24

First floor



Ground floor





The Aspen

4 bedroom home

bovishomes.co.uk

**Bovis
Homes** 

The Aspen

4 bedroom home

Ground floor	metres	feet / inches
Kitchen / dining area	7.77 x 3.37	25' 6" x 11' 1"
Sitting room	5.04 x 3.39	16' 6" x 11' 1"
Study	2.01 x 2.01	6' 7" x 6' 7"

First floor

Bedroom 1	4.52 x 3.81	14' 10" x 12' 6"
Bedroom 2	3.87 x 3.11	12' 8" x 10' 2"
Bedroom 3	4.07 x 2.42	13' 4" x 7' 11"
Bedroom 4	3.61 x 2.45	11' 10" x 8' 1"

ovn	oven	ffzr	fridge freezer
h	hob	ldr	larder
ds	dishwasher space	cup'd	cupboard
ws	washing machine space	< >	measuring points

The floorplan has been produced for illustrative purposes only. Room sizes shown are between arrow points as indicated on plan. The dimensions have tolerances of + or -50mm and should not be used other than for general guidance. If specific dimensions are required, enquiries should be made to the sales consultant. The floor plans shown are not to scale. Measurements are based on the original drawings. Slight variations may occur during construction.

The illustrations shown are computer generated impressions of how the property may look and are indicative only. External details or finishes may vary on individual plots and homes may be built in either detached or attached styles depending on the development layout. Exact specifications, window styles and whether a property is left or right handed may differ from plot to plot. Please speak to our sales consultant for specific plot details.

- * Windows apply to selected plots only. Please see sales consultant for further details.

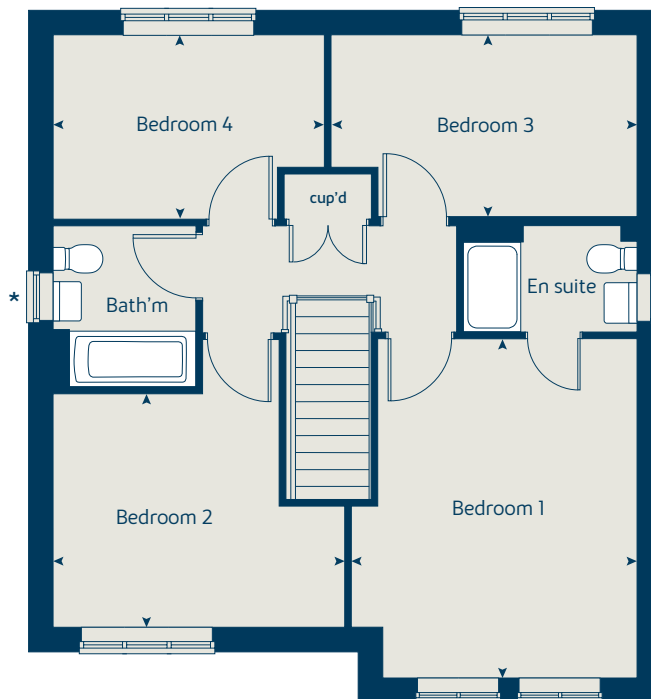
The Aspen | X414 (F) Stonehouse

Produced by the Vistry Group Design Studio.

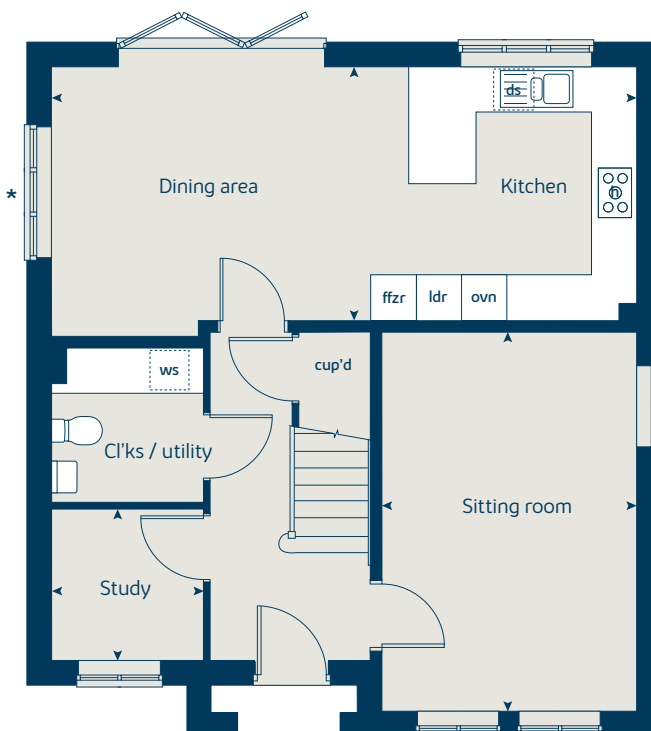
When you have finished with this leaflet please recycle it.

130-HSTN2 DS08288 / 07.24

First floor



Ground floor





The Aspen II

4 bedroom home

bovishomes.co.uk

**Bovis
Homes** 

The Aspen II

4 bedroom home

Ground floor	metres	feet / inches
Kitchen / dining area	7.77 x 3.37	25' 6" x 11' 1"
Sitting room	5.04 x 3.39	16' 6" x 11' 1"
Study	2.01 x 2.01	6' 7" x 6' 7"

First floor

Bedroom 1	4.52 x 4.09	14' 10" x 13' 5"
Bedroom 2	3.59 x 3.11	11' 10" x 10' 2"
Bedroom 3	4.07 x 2.42	13' 4" x 7' 11"
Bedroom 4	3.61 x 2.45	11' 10" x 8' 1"

ovn	oven	ffzr	fridge freezer
h	hob	ldr	larder
ds	dishwasher space	cup'd	cupboard
ws	washing machine space	◀ ▶	measuring points

The floorplan has been produced for illustrative purposes only. Room sizes shown are between arrow points as indicated on plan. The dimensions have tolerances of + or -50mm and should not be used other than for general guidance. If specific dimensions are required, enquiries should be made to the sales consultant. The floor plans shown are not to scale. Measurements are based on the original drawings. Slight variations may occur during construction.

The illustrations shown are computer generated impressions of how the property may look and are indicative only. External details or finishes may vary on individual plots and homes may be built in either detached or attached styles depending on the development layout. Exact specifications, window styles and whether a property is left or right handed may differ from plot to plot. Please speak to our sales consultant for specific plot details.

* Windows apply to selected plots only.
Please see sales consultant for further details.

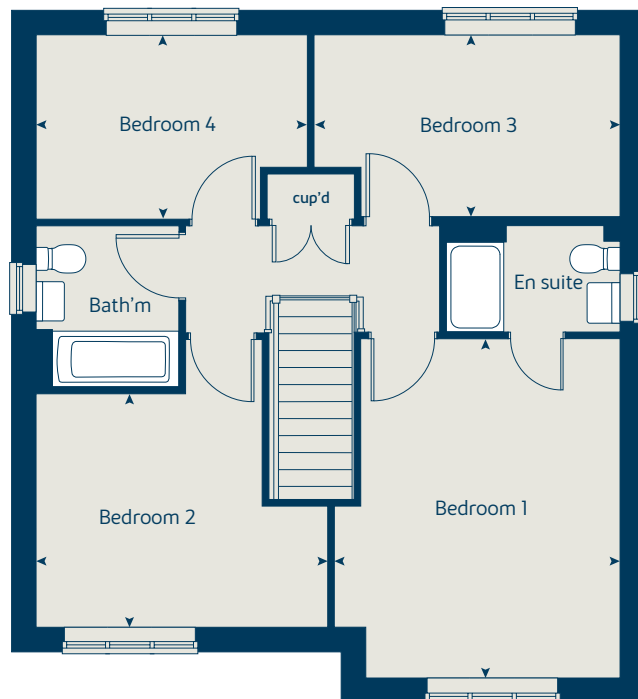
The Aspen II | X414 (IF) Stonehouse

Produced by the Vistry Group Design Studio.

When you have finished with this leaflet please recycle it.

130-HSTN2 DS08288 / 07.24

First floor



Ground floor





The Alder

4 bedroom home

bovishomes.co.uk

**Bovis
Homes** 

The Alder

4 bedroom home

Ground floor	metres	feet / inches
Kitchen	3.52 x 3.24	11' 7" x 10' 8"
Dining / family area	5.26 x 3.23	17' 3" x 10' 8"
Sitting room	4.28 x 3.39	14' 1" x 11' 1"

First floor	metres	feet / inches
Bedroom 1	3.88 x 3.38	12' 8" x 11' 1"
Bedroom 2	4.34 x 3.03	14' 3" x 9' 11"
Bedroom 3	3.79 x 3.03	12' 5" x 9' 11"
Bedroom 4	3.35 x 3.13	10' 11" x 10' 3"

ovn	oven	cyl	hot water cylinder
h	hob	ldr	larder
ds	dishwasher space	cup'd	cupboard
ws	washing machine space	< >	measuring points
ffzr	fridge freezer		

The floorplan has been produced for illustrative purposes only. Room sizes shown are between arrow points as indicated on plan. The dimensions have tolerances of + or -50mm and should not be used other than for general guidance. If specific dimensions are required, enquiries should be made to the sales consultant. The floor plans shown are not to scale. Measurements are based on the original drawings. Slight variations may occur during construction.

The illustrations shown are computer generated impressions of how the property may look and are indicative only. External details or finishes may vary on individual plots and homes may be built in either detached or attached styles depending on the development layout. Exact specifications, window styles and whether a property is left or right handed may differ from plot to plot. Please speak to our sales consultant for specific plot details.

* Door and windows apply to selected plots only. Please see sales consultant for further details.

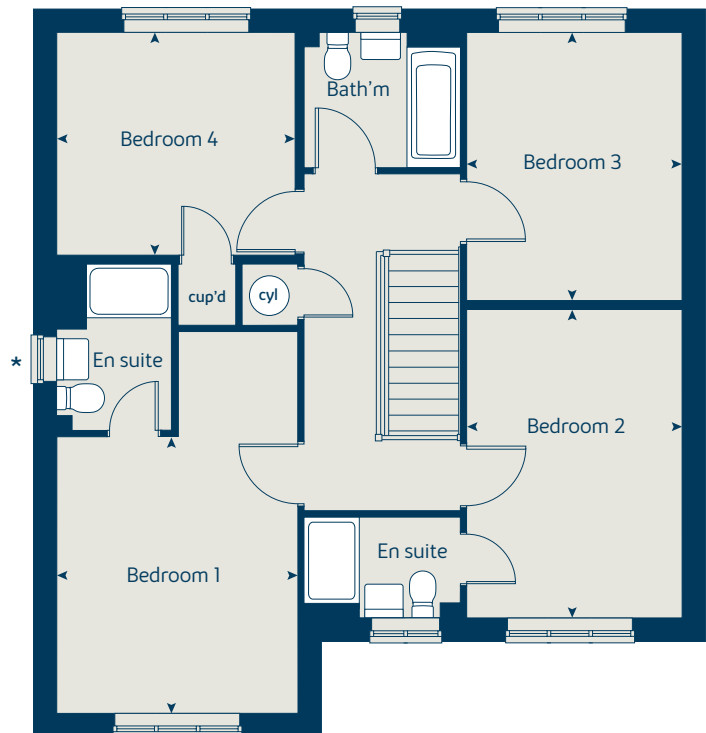
The Alder | X415 Stonehouse

Produced by the Vistry Group Design Studio.

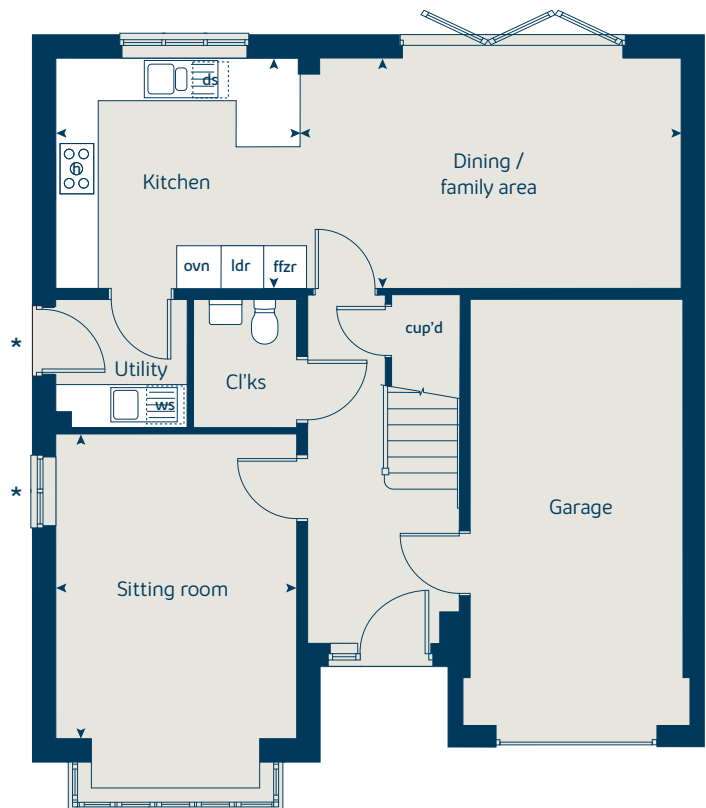
When you have finished with this leaflet please recycle it.

130-HSTN2 DS08288 / 07.24

First floor



Ground floor





The Orchard

4 bedroom home

bovishomes.co.uk

**Bovis
Homes** 

The Orchard

4 bedroom home

Ground floor	metres	feet / inches
Kitchen / family / dining	8.00 x 3.55	26' 3" x 11' 8"
Sitting room	4.32 x 4.29	14' 2" x 14' 1"
Study	2.67 x 1.84	8' 9" x 6' 1"

First floor	metres	feet / inches
Bedroom 1	4.28 x 3.05	14' 1" x 10' 0"
Bedroom 2	4.71 x 3.58	15' 5" x 11' 8"
Bedroom 3	3.62 x 2.67	11' 11" x 8' 9"
Bedroom 4	3.58 x 3.20	11' 9" x 10' 6"

ovn	oven	ffzr	fridge freezer
h	hob	ldr	larder
ws	washing machine space	cup'd	cupboard
ds	dishwasher space	◀ ▶	measuring points

The floorplan has been produced for illustrative purposes only. Room sizes shown are between arrow points as indicated on plan. The dimensions have tolerances of + or -50mm and should not be used other than for general guidance. If specific dimensions are required, enquiries should be made to the sales consultant. The floor plans shown are not to scale. Measurements are based on the original drawings. Slight variations may occur during construction.

The illustrations shown are computer generated impressions of how the property may look and are indicative only. External details or finishes may vary on individual plots and homes may be built in either detached or attached styles depending on the development layout. Exact specifications, window styles and whether a property is left or right handed may differ from plot to plot. Please speak to our sales consultant for specific plot details.

* Door and windows apply to selected plots only. Please see sales consultant for further details.

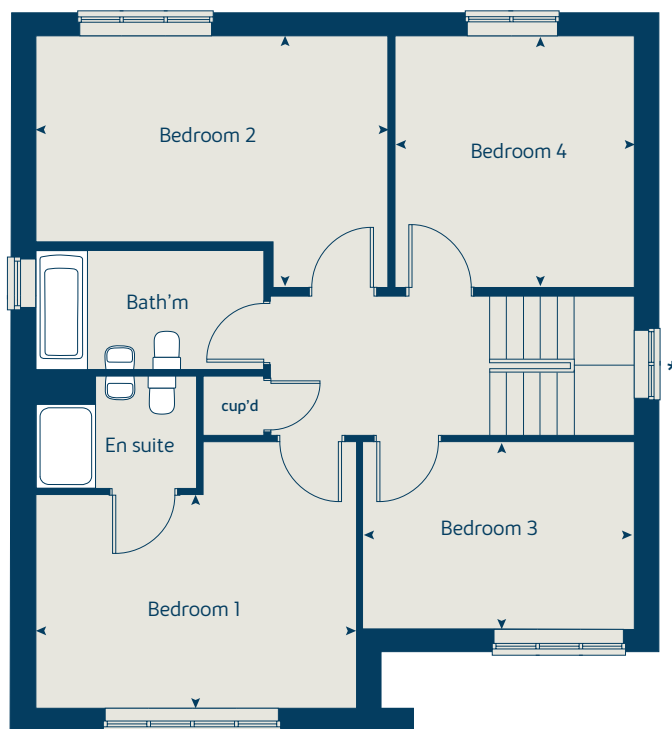
The Orchard | W4025 Stonehouse

Produced by the Vistry Group Design Studio.

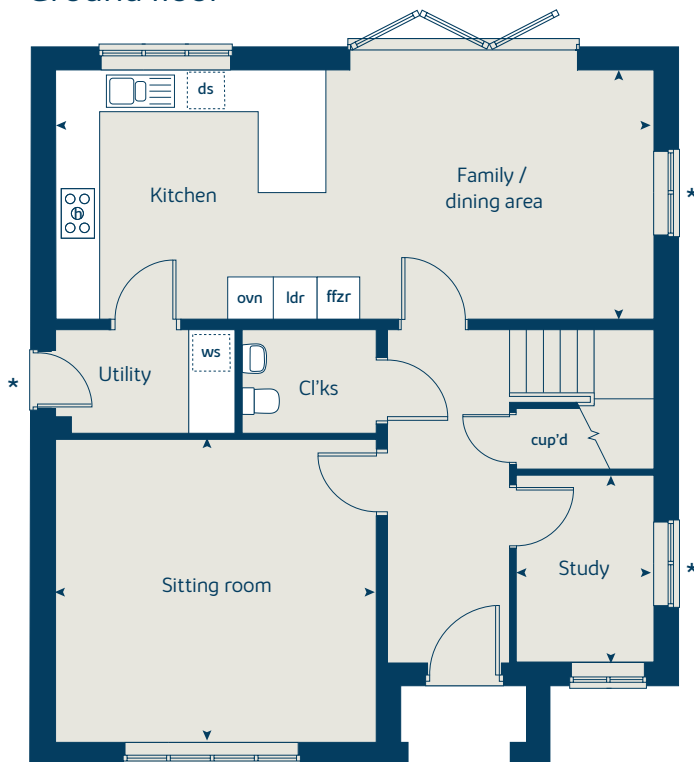
When you have finished with this leaflet please recycle it.

130-HSTN2 DS08288 / 07.24

First floor



Ground floor





The Orchard II

4 bedroom home

bovishomes.co.uk

**Bovis
Homes** 

The Orchard II

4 bedroom home

Ground floor	metres	feet / inches
Kitchen / family / dining	8.00 x 3.55	26' 3" x 11' 8"
Sitting room	4.32 x 4.29	14' 2" x 14' 1"
Study	2.67 x 1.84	8' 9" x 6' 1"

First floor

Bedroom 1	4.28 x 3.05	14' 1" x 10' 0"
Bedroom 2	4.71 x 3.58	15' 5" x 11' 8"
Bedroom 3	3.62 x 2.67	11' 11" x 8' 9"
Bedroom 4	3.58 x 3.20	11' 9" x 10' 6"

ovn	oven	ffzr	fridge freezer
h	hob	ldr	larder
ws	washing machine space	cup'd	cupboard
ds	dishwasher space	◀ ▶	measuring points

The floorplan has been produced for illustrative purposes only. Room sizes shown are between arrow points as indicated on plan. The dimensions have tolerances of + or -50mm and should not be used other than for general guidance. If specific dimensions are required, enquiries should be made to the sales consultant. The floor plans shown are not to scale. Measurements are based on the original drawings. Slight variations may occur during construction.

The illustrations shown are computer generated impressions of how the property may look and are indicative only. External details or finishes may vary on individual plots and homes may be built in either detached or attached styles depending on the development layout. Exact specifications, window styles and whether a property is left or right handed may differ from plot to plot. Please speak to our sales consultant for specific plot details.

* Door and window applies to selected plots only. Please see sales consultant for further details.

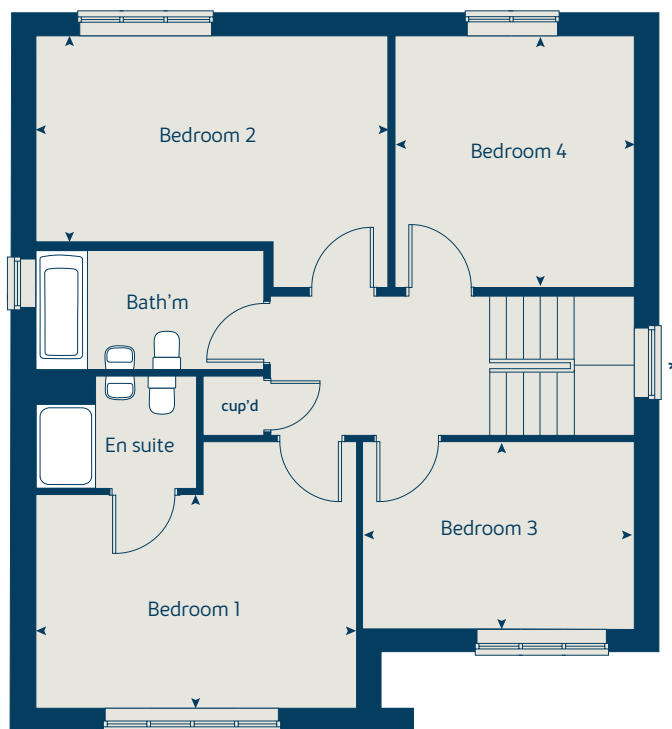
The Orchard II | W4025 Stonehouse

Produced by the Vistry Group Design Studio.

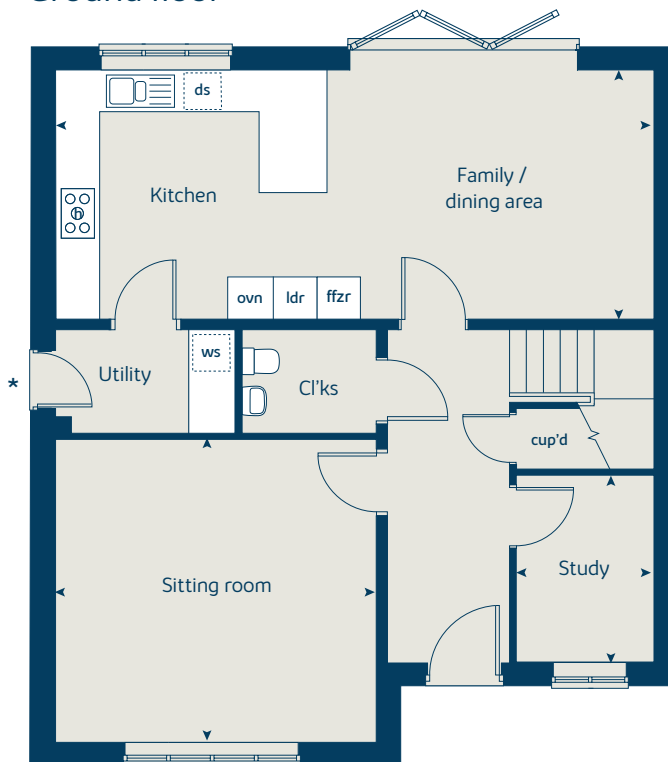
When you have finished with this leaflet please recycle it.

130-HSTN2 DS08288 / 07.24

First floor



Ground floor





Great Oldbury

Stonehouse

Specification

bovishomes.co.uk

**Bovis
Homes** 

Great Oldbury

Stonehouse

Use this guide to see what features are included in your new home. Your sales consultant will be happy to discuss the **Select** range of extras available.



3 bedroom
The Apple
The Hazel
The Cypress
The Spruce
The Spruce II
The Beech

4 bedroom
The Juniper
The Chestnut
The Chestnut II
The Aspen
The Aspen II
The Alder
The Orchard
The Orchard II

Kitchen

	The Apple	The Hazel	The Cypress	The Spruce	The Spruce II	The Beech	The Juniper	The Chestnut	The Chestnut II	The Aspen	The Aspen II	The Alder	The Orchard	The Orchard II
Choice of Standard fitted kitchen (doors & worktops)	■	■	■	■	■	■	■	■	■	■	■	■	■	■
Stainless steel sink and drainer (single and a half bowl) with chrome mixer tap	■	■	■	■	■	■	■	■	■	■	■	■	■	■
Stainless steel sink and drainer (single bowl) with chrome mixer tap in utility			■	■	■							■		
Indesit hob (60cm) with built-in single under oven, with stainless steel splashback and curved glass chimney hood	■	■	■	■	■	■								
Hotpoint hob (75 cm) with built-in double high level oven, with glass splashback and curved glass chimney hood							■	■	■	■	■	■	■	■
Pendant light fitting	■	■	■	■	■	■	■	■	■	■	■	■	■	■
Pre-wired for under-unit lighting option	■	■	■	■	■	■	■	■	■	■	■	■	■	■
Fridge / freezer space	■	■	■	■	■	■								
Indesit Integrated 50 / 50 fridge freezer							■	■	■	■	■	■	■	■
Space for integrated dishwasher with plumbing and electrics	■	■	■	■	■	■	■	■	■	■	■	■	■	■
Space for washing machine with plumbing and electrics in kitchen	■	■				■	■	■	■					
Space for washing machine with plumbing and electrics in utility			■	■	■					■	■	■	■	■

Bathrooms and en suite(s)

	The Apple	The Hazel	The Cypress	The Spruce	The Spruce II	The Beech	The Juniper	The Chestnut	The Chestnut II	The Aspen	The Aspen II	The Alder	The Orchard	The Orchard II
Contemporary white sanitaryware suite	■	■	■	■	■	■	■	■	■	■	■	■	■	■
Close coupled WC to cloakroom	■	■	■	■	■	■	■	■	■	■	■	■	■	■
Handheld hair wash attachment	■	■	■	■	■	■	■	■	■	■	■	■	■	■
Low profile shower tray with glass enclosure to en suite	■	■	■	■	■	■	■	■	■	■	■	■	■	■
Second shower en suite to selected bedrooms											■			
Choice of standard Porcelanosa wall tiling (splashback, 450mm over bath, and full-height to shower cubicle)*	■	■	■	■	■	■	■	■	■	■	■	■	■	■
Chrome bezel LED light fitting to bathroom and en suite(s)	■	■	■	■	■	■	■	■	■	■	■	■	■	■
Chrome towel warmer to bathroom and en suite(s)							■	■	■	■	■	■	■	■
Water waste heat recovery system	■	■	■	■	■	■	■	■	■	■	■	■	■	■

Bedrooms

	The Apple	The Hazel	The Cypress	The Spruce	The Spruce II	The Beech	The Juniper	The Chestnut	The Chestnut II	The Aspen	The Aspen II	The Alder	The Orchard	The Orchard II
Dressing area to Bedroom 1						■								

Doors and Windows

	The Apple	The Hazel	The Cypress	The Spruce	The Spruce II	The Beech	The Juniper	The Chestnut	The Chestnut II	The Aspen	The Aspen II	The Alder	The Orchard	The Orchard II
Front door with multi-point security locking system and security chain	■	■	■	■	■	■	■	■	■	■	■	■	■	■
PVCu double glazing to windows	■	■	■	■	■	■	■	■	■	■	■	■	■	■

3 bedroom
The Apple
The Hazel
The Cypress
The Spruce
The Spruce II
The Beech

4 bedroom
The Juniper
The Chestnut
The Chestnut II
The Aspen
The Aspen II
The Alder
The Orchard
The Orchard II

	The Apple	The Hazel	The Cypress	The Spruce	The Spruce II	The Beech	The Juniper	The Chestnut	The Chestnut II	The Aspen	The Aspen II	The Alder	The Orchard	The Orchard II
Double glazed PVCu French doors	■	■	■	■	■	■								
Powder coated aluminium double glazed bi-fold doors							■	■	■	■	■	■	■	■
Internal cottage style pre-primed doors with brass satin finish handles	■	■	■	■	■	■	■	■	■	■	■	■	■	■
Paving outside French / bi-fold door and path to garage personnel door (where applicable)	■	■	■	■	■	■	■	■	■	■	■	■	■	■

General

	The Apple	The Hazel	The Cypress	The Spruce	The Spruce II	The Beech	The Juniper	The Chestnut	The Chestnut II	The Aspen	The Aspen II	The Alder	The Orchard	The Orchard II
PV solar panels	■	■	■	■	■	■	■	■	■	■	■	■	■	■
7kw electric vehicle charger	■	■	■	■	■	■	■	■	■	■	■	■	■	■
White painted walls and smooth white ceilings	■	■	■	■	■	■	■	■	■	■	■	■	■	■
Combined usb / double sockets in kitchen and bedroom 1	■	■	■	■	■	■	■	■	■	■	■	■	■	■
Multi-media point in living room	■	■	■	■	■	■	■	■	■	■	■	■	■	■
TV point to bedroom 1 and family room (where applicable)	■	■	■	■	■	■	■	■	■	■	■	■	■	■
Master telephone socket to sitting room and study (where applicable)	■	■	■	■	■	■	■	■	■	■	■	■	■	■
Gas central heating with wall mounted combi-boiler, programme selector and room thermostat(s)	■	■	■	■	■	■	■	■	■	■	■	■	■	■
Gas central heating with wall mounted boiler and separate hot water cylinder, programme selector and room thermostat(s)												■		
Thermostatic valves to all radiators (with the exception of rooms with separate thermostat control)	■	■	■	■	■	■	■	■	■	■	■	■	■	■
Fitted external tap	■	■	■	■	■	■	■	■	■	■	■	■	■	■
External light fitted to front porch and wiring for external light to rear door	■	■	■	■	■	■	■	■	■	■	■	■	■	■
Mains wired smoke detectors with battery back-up	■	■	■	■	■	■	■	■	■	■	■	■	■	■
Battery powered Carbon Monoxide detector (wall mounted) to be provided for each floor	■	■	■	■	■	■	■	■	■	■	■	■	■	■
Power and lighting to 'on plot' garage (where applicable)	■	■	■	■	■	■	■	■	■	■	■	■	■	■
Enclosed fenced rear garden, and garden gate (where applicable)	■	■	■	■	■	■	■	■	■	■	■	■	■	■
Landscaped front gardens	■	■	■	■	■	■	■	■	■	■	■	■	■	■
NHBC Buildmark cover	■	■	■	■	■	■	■	■	■	■	■	■	■	■
First two years' customer service support from Bovis Homes	■	■	■	■	■	■	■	■	■	■	■	■	■	■

■ Fitted as standard - included in the property
 * Subject to stage of construction

So much choice...

Part of the excitement of buying a new home is the thrill of being the first person to live in the property and having a brand new contemporary kitchen and modern bathroom. Our premium brand partners ensure that all of our fixtures and fittings comply with the latest Government building regulations and only branded appliances are installed in your new home.

Once you know what specification comes included, you'll have a choice from our specially selected tiles for your kitchen and bathrooms, as well as kitchen worktops and cupboard doors. You can then use the Bovis Homes **Select** brochure to add the finishing touches to your home to make it extra special for you!

From personalising your bathrooms with stunning ceramics, or adding smooth sliding wardrobes to your master bedroom, there are a wide range of additional options and upgrades available.

The availability of items is subject to the stage of build, and can vary by development and house type. Our sales consultants will be happy to provide guidance.



The specification shown is correct at the time of production. Bovis Homes is continually reviewing and updating the specification on all house / apartment types and therefore reserves the right to change specification details. Photographs depict typical Bovis Homes interiors and may include optional upgrades. For full details regarding the current specification and finishes, please speak to our sales consultant.

Produced by the Vistry Group Design Studio.

When you have finished with this leaflet please recycle it.

130-HSTN2 DS08288 / 03.24

**Bovis
Homes** 



3 bedroom Sage Home

Homes 289 & 290



built
by



3 bedroom Sage Home

Homes 289 & 290

Ground floor	metres	feet / inches
Kitchen / dining room	5.19 x 3.64	17' 0" x 11' 11"
Sitting room	4.17 x 3.69	13' 8" x 12' 1"

First floor

Bedroom 1	4.15 x 2.95	13' 7" x 9' 8"
Bedroom 2	5.19 x 2.55	17' 0" x 8' 5"
Bedroom 3	4.15 x 2.15	13' 7" x 7' 1"

ovn	oven	ffzs	fridge freezer space
h	hob	cup'd	cupboard
ds	dishwasher space	◀ ▶	measuring points
ws	washing machine space		

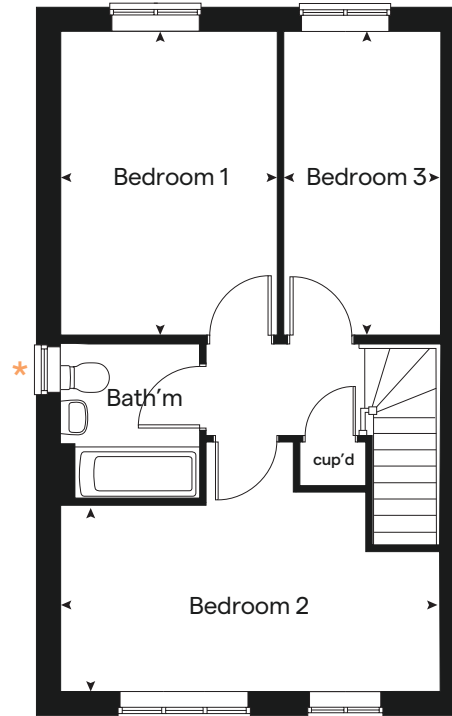
The floorplan has been produced for illustrative purposes only. Room sizes shown are between arrow points as indicated on plan. The dimensions have tolerances of + or -50mm and should not be used other than for general guidance. If specific dimensions are required, enquiries should be made to the sales consultant. The floor plans shown are not to scale. Measurements are based on the original drawings. Slight variations may occur during construction.

The illustrations shown are computer generated impressions of how the property may look and are indicative only. External details or finishes may vary on individual plots and homes may be built in either detached or attached styles depending on the development layout. Exact specifications, window styles and whether a property is left or right handed may differ from plot to plot. Please speak to our sales consultant for specific plot details.

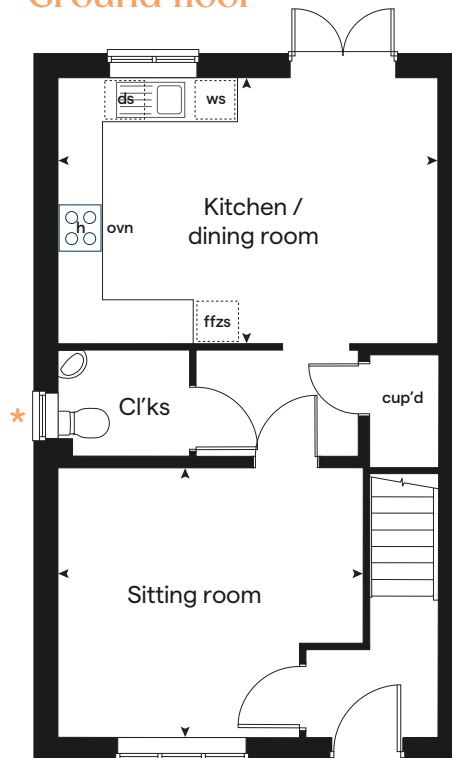
* Windows apply to selected plots only.
Please see sales consultant for further details.

Produced by the Vistry Group Design Studio.
When you have finished with this leaflet please recycle it.
The Juniper DS08288 / 07.24

First floor



Ground floor



built by





3 bedroom Sage Home

Homes 180 - 183



built
by



3 bedroom Sage Home

Homes 180-183

Ground floor	metres	feet / inches
Kitchen / dining area	5.19 x 2.99	17' 0" x 9' 10"
Sitting room	4.17 x 3.66	13' 8" x 12' 0"

First floor

Bedroom 1	3.54 x 3.29	11' 7" x 10' 9"
Bedroom 2	2.95 x 2.72	9' 8" x 8' 11"
Bedroom 3	3.48 x 2.15	11' 5" x 7' 1"

ovn	oven	ffzs	fridge freezer space
h	hob	cup'd	cupboard
ds	dishwasher space	< >	measuring points
ws	washing machine space		

The floorplan has been produced for illustrative purposes only. Room sizes shown are between arrow points as indicated on plan. The dimensions have tolerances of + or -50mm and should not be used other than for general guidance. If specific dimensions are required, enquiries should be made to the sales consultant. The floor plans shown are not to scale. Measurements are based on the original drawings. Slight variations may occur during construction.

The illustrations shown are computer generated impressions of how the property may look and are indicative only. External details or finishes may vary on individual plots and homes may be built in either detached or attached styles depending on the development layout. Exact specifications, window styles and whether a property is left or right handed may differ from plot to plot. Please speak to our sales consultant for specific plot details.

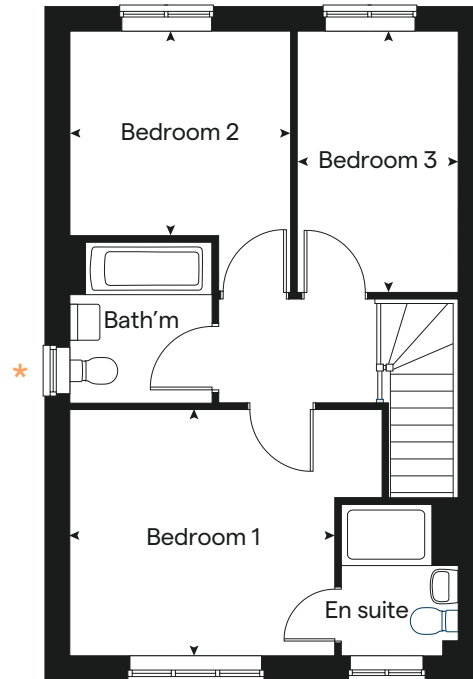
* Window applies to selected plots only. Please see sales consultant for further details.

Produced by the Vistry Group Design Studio.

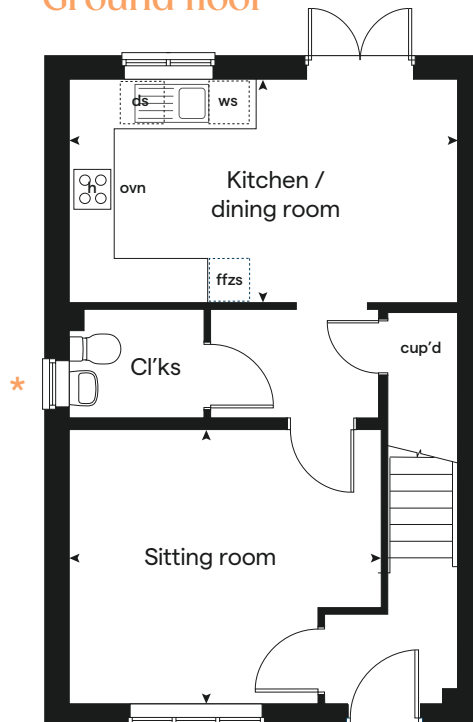
When you have finished with this leaflet please recycle it.

The Juniper: DS08288 / 07.24

First floor



Ground floor



built by





3 bedroom Sage Home

Homes 204, 272, 314 & 327



built
by



3 bedroom Sage Home

Homes 204, 272,
314 & 327

Ground floor	metres	feet / inches
Kitchen / dining area	5.52 x 3.12	18' 1" x 10' 2"
Sitting room	4.41 x 3.40	14' 6" x 11' 2"

First floor	metres	feet / inches
Bedroom 1	4.09 x 3.28	13' 5" x 10' 9"
Bedroom 2	3.28 x 2.83	10' 9" x 9' 3"
Bedroom 3	3.52 x 2.16	11' 7" x 7' 1"

ovn	oven	ffzs	fridge freezer space
h	hob	cup'd	cupboard
ds	dishwasher space	< >	measuring points
ws	washing machine space		

The floorplan has been produced for illustrative purposes only. Room sizes shown are between arrow points as indicated on plan. The dimensions have tolerances of + or -50mm and should not be used other than for general guidance. If specific dimensions are required, enquiries should be made to the sales consultant. The floor plans shown are not to scale. Measurements are based on the original drawings. Slight variations may occur during construction.

The illustrations shown are computer generated impressions of how the property may look and are indicative only. External details or finishes may vary on individual plots and homes may be built in either detached or attached styles depending on the development layout. Exact specifications, window styles and whether a property is left or right handed may differ from plot to plot. Please speak to our sales consultant for specific plot details.

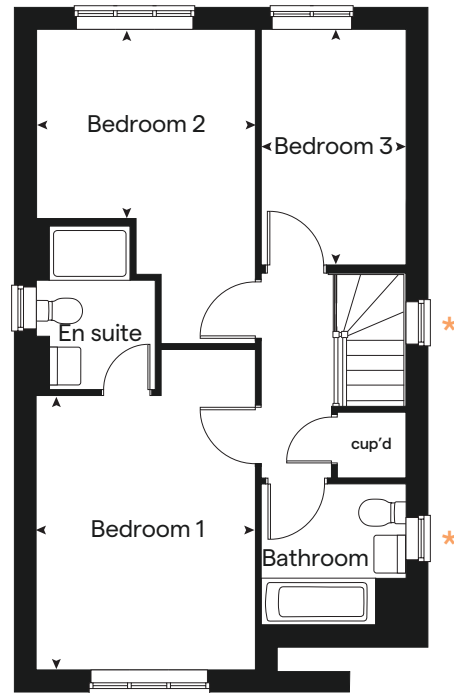
* Windows apply to selected plots only.
Please see sales consultant for further details.

Produced by the Vistry Group Design Studio.
When you have finished with this leaflet please recycle it.
The Juniper DS08288 / 07.24

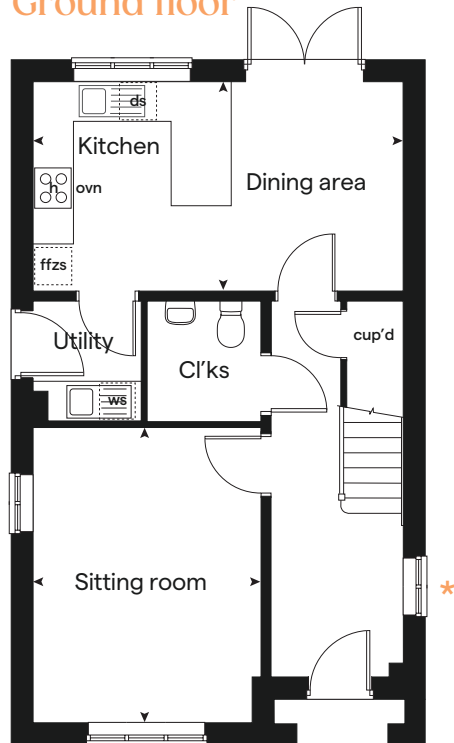


built by
Bovis Homes

First floor



Ground floor





3 bedroom Sage Home

Homes 328 - 332



built
by



3 bedroom Sage Home

Homes 328 - 332

Ground floor	metres	feet / inches
Kitchen / dining room	4.74 x 2.91	15' 6" x 9' 7"
Sitting room	4.00 x 3.72	13' 1" x 12' 2"

First floor	metres	feet / inches
Bedroom 2	4.74 x 3.46	15' 7" x 11' 4"
Bedroom 3	3.39 x 2.49	11' 1" x 8' 2"

Second floor	metres	feet / inches
Bedroom 1	3.62 x 3.02	11' 11" x 9' 11"

ovn	oven	ffzs	fridge freezer space
h	hob	cup'd	cupboard
ds	dishwasher space	< >	measuring points
ws	washing machine space		

The floorplan has been produced for illustrative purposes only. Room sizes shown are between arrow points as indicated on plan. The dimensions have tolerances of + or -50mm and should not be used other than for general guidance. If specific dimensions are required, enquiries should be made to the sales consultant. The floor plans shown are not to scale. Measurements are based on the original drawings. Slight variations may occur during construction.

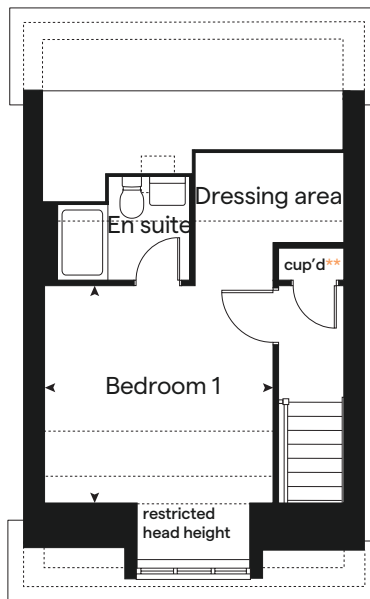
The illustrations shown are computer generated impressions of how the property may look and are indicative only. External details or finishes may vary on individual plots and homes may be built in either detached or attached styles depending on the development layout. Exact specifications, window styles and whether a property is left or right handed may differ from plot to plot. Please speak to our sales consultant for specific plot details.

- * Windows apply to selected plots only. Please see sales consultant for further details.
- ** Solar panel service access. Please see sales consultant for further details.

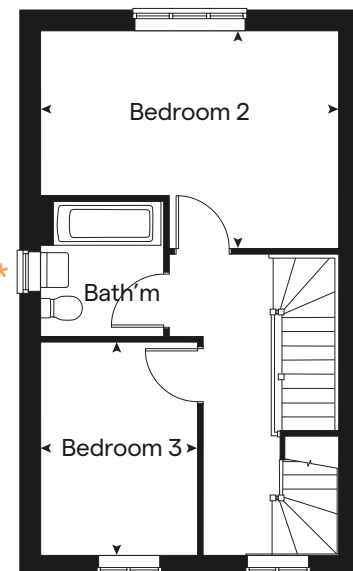
Produced by the Vistry Group Design Studio.
When you have finished with this leaflet please recycle it.
The Juniper DS08288 / 07.24



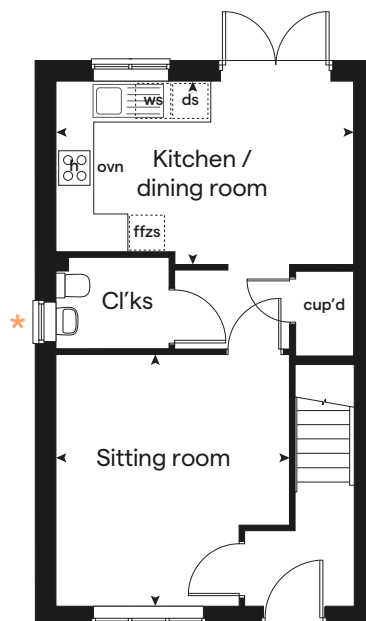
Second floor



First floor



Ground floor





3 bedroom Sage Home

Homes 179, 184, 195, 245, 339 & 340



built
by



3 bedroom Sage Home

Homes 179, 184, 195,
245, 339 & 340

Ground floor	metres	feet / inches
Kitchen	3.16 x 2.69	10' 4" x 8' 10"
Dining area	3.14 x 2.36	10' 4" x 7' 9"
Sitting room	5.53 x 3.32	18' 2" x 10' 11"

First floor	metres	feet / inches
Bedroom 1	3.34 x 2.94	10' 11" x 9' 8"
Bedroom 2	3.60 x 3.27	11' 10" x 10' 9"
Bedroom 3	3.63 x 2.17	11' 11" x 7' 2"

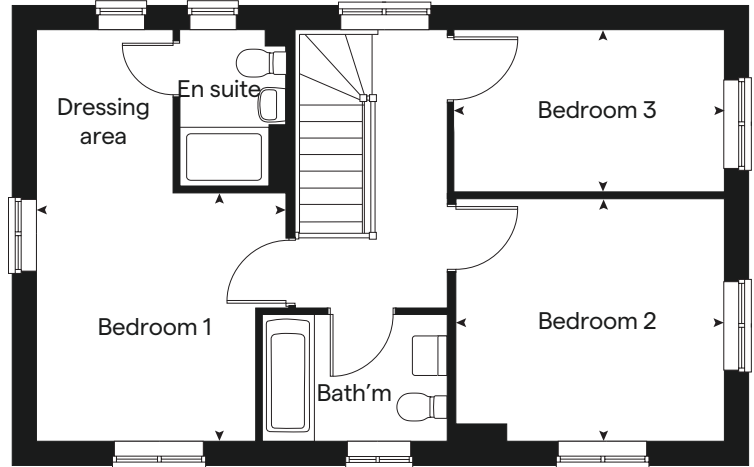
ovn	oven	ffzs	fridge freezer space
h	hob	cup'd	cupboard
ds	dishwasher space	< >	measuring points
ws	washing machine space		

The floorplan has been produced for illustrative purposes only. Room sizes shown are between arrow points as indicated on plan. The dimensions have tolerances of + or -50mm and should not be used other than for general guidance. If specific dimensions are required, enquiries should be made to the sales consultant. The floor plans shown are not to scale. Measurements are based on the original drawings. Slight variations may occur during construction.

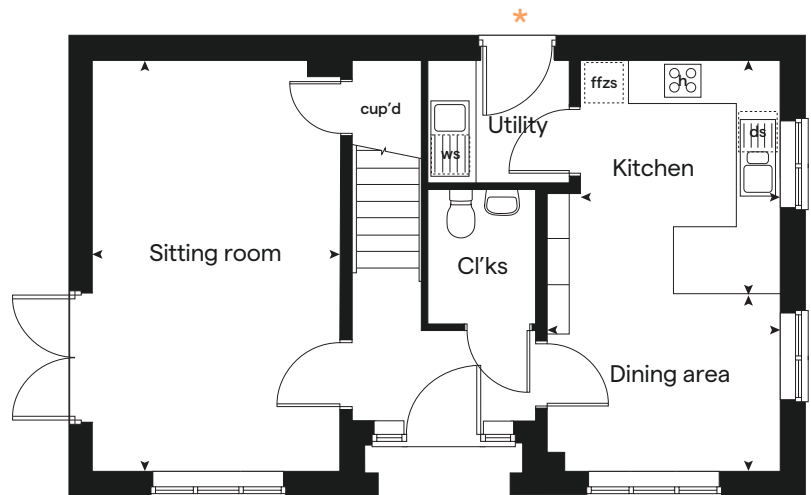
The illustrations shown are computer generated impressions of how the property may look and are indicative only. External details or finishes may vary on individual plots and homes may be built in either detached or attached styles depending on the development layout. Exact specifications, window styles and whether a property is left or right handed may differ from plot to plot. Please speak to our sales consultant for specific plot details.

* Door applies to selected plots only.
Please see sales consultant for further details.

First floor



Ground floor



Produced by the Vistry Group Design Studio.

When you have finished with this leaflet please recycle it.

The Juniper DS08288 / 07.24



built by





3 bedroom Sage Home

Homes 193, 321 & 322



built
by



3 bedroom Sage Home

Homes 193,
321 & 322

Ground floor	metres	feet / inches
Kitchen	3.16 x 2.69	10' 4" x 8' 10"
Dining area	3.14 x 2.36	10' 4" x 7' 9"
Sitting room	5.53 x 3.32	18' 2" x 10' 11"

First floor	metres	feet / inches
Bedroom 1	3.34 x 2.94	10' 11" x 9' 8"
Bedroom 2	3.60 x 3.27	11' 10" x 10' 9"
Bedroom 3	3.63 x 2.17	11' 11" x 7' 2"

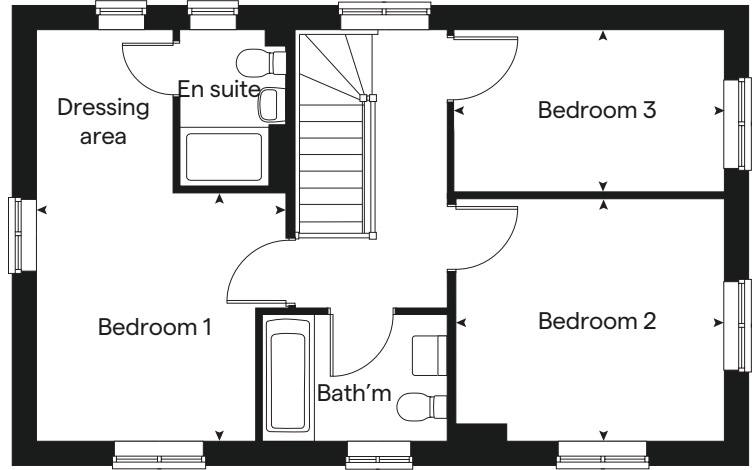
ovn	oven	ffzs	fridge freezer space
h	hob	cup'd	cupboard
ds	dishwasher space	< >	measuring points
ws	washing machine space		

The floorplan has been produced for illustrative purposes only. Room sizes shown are between arrow points as indicated on plan. The dimensions have tolerances of + or -50mm and should not be used other than for general guidance. If specific dimensions are required, enquiries should be made to the sales consultant. The floor plans shown are not to scale. Measurements are based on the original drawings. Slight variations may occur during construction.

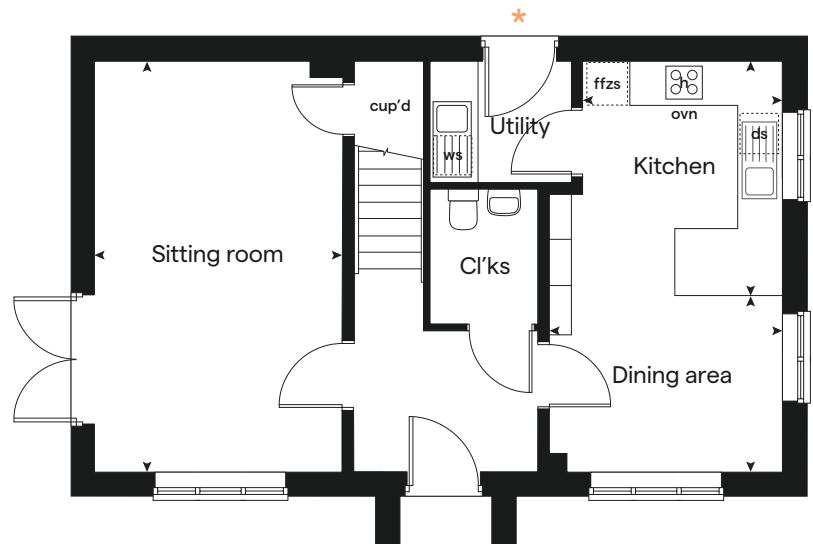
The illustrations shown are computer generated impressions of how the property may look and are indicative only. External details or finishes may vary on individual plots and homes may be built in either detached or attached styles depending on the development layout. Exact specifications, window styles and whether a property is left or right handed may differ from plot to plot. Please speak to our sales consultant for specific plot details.

* Door applies to selected plots only.
Please see sales consultant for further details.

First floor



Ground floor



Produced by the Vistry Group Design Studio.

When you have finished with this leaflet please recycle it.

The Juniper DS08288 / 07.24



built by





4 bedroom Sage Home

Home 341



built
by



4 bedroom Sage Home

Home 341

Ground floor	metres	feet / inches
Kitchen / dining area	7.77 x 3.37	25' 6" x 11' 1"
Sitting room	5.04 x 3.39	16' 6" x 11' 1"
Study	2.01 x 2.01	6' 7" x 6' 7"

First floor

Bedroom 1	4.52 x 3.81	14' 10" x 12' 6"
Bedroom 2	3.87 x 3.11	12' 8" x 10' 2"
Bedroom 3	4.07 x 2.42	13' 4" x 7' 11"
Bedroom 4	3.61 x 2.45	11' 10" x 8' 1"

ovn	oven	ffzs	fridge freezer space
h	hob	ldr	larder
ds	dishwasher space	cup'd	cupboard
ws	washing machine space	< >	measuring points

The floorplan has been produced for illustrative purposes only. Room sizes shown are between arrow points as indicated on plan. The dimensions have tolerances of + or -50mm and should not be used other than for general guidance. If specific dimensions are required, enquiries should be made to the sales consultant. The floor plans shown are not to scale. Measurements are based on the original drawings. Slight variations may occur during construction.

The illustrations shown are computer generated impressions of how the property may look and are indicative only. External details or finishes may vary on individual plots and homes may be built in either detached or attached styles depending on the development layout. Exact specifications, window styles and whether a property is left or right handed may differ from plot to plot. Please speak to our sales consultant for specific plot details.

* Windows apply to selected plots only. Please see sales consultant for further details.

Produced by the Vistry Group Design Studio.

When you have finished with this leaflet please recycle it.

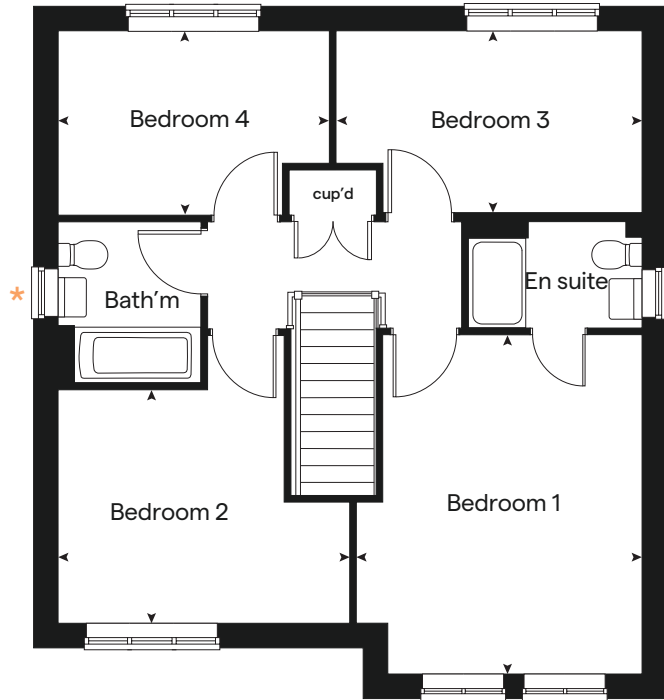
The Juniper DS08288 / 07.24



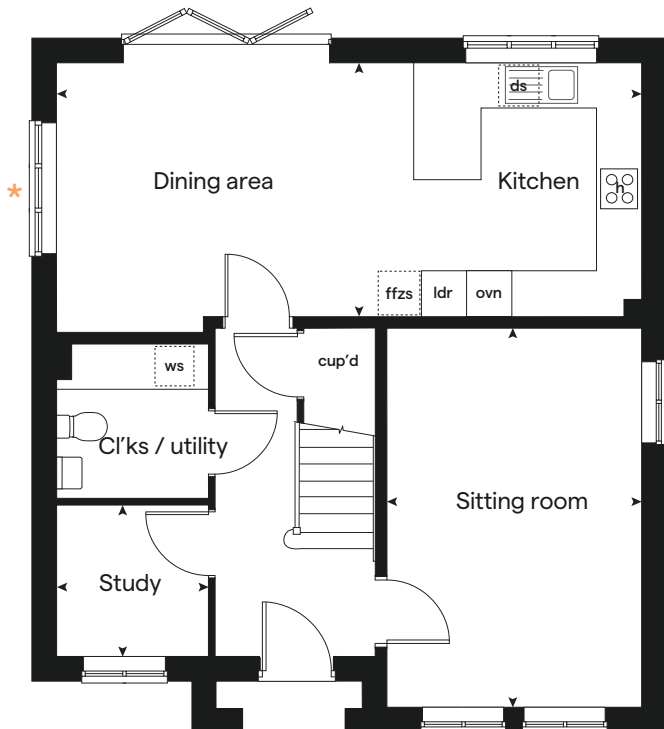
built by



First floor



Ground floor





4 bedroom Sage Home

Homes 199, 279, 280 & 338



built
by



4 bedroom Sage Home

Homes 199, 279,
280 & 338

Ground floor	metres	feet / inches
Kitchen / dining / family area	7.21 x 3.52	23' 8" x 11' 7"
Sitting room	4.55 x 3.04	14' 11" x 10' 0"
Study	2.34 x 1.85	7' 8" x 6' 1"

First floor	metres	feet / inches
Bedroom 1	3.47 x 2.85	11' 5" x 9' 4"
Bedroom 2	3.65 x 2.84	12' 0" x 9' 4"
Bedroom 3	3.52 x 2.38	11' 7" x 7' 10"
Bedroom 4	3.61 x 2.38	11' 10" x 7' 10"

ovn	oven	ffzs	fridge freezer space
h	hob	ldr	larder
ds	dishwasher space	cup'd	cupboard
ws	washing machine space	< >	measuring points

The floorplan has been produced for illustrative purposes only. Room sizes shown are between arrow points as indicated on plan. The dimensions have tolerances of + or -50mm and should not be used other than for general guidance. If specific dimensions are required, enquiries should be made to the sales consultant. The floor plans shown are not to scale. Measurements are based on the original drawings. Slight variations may occur during construction.

The illustrations shown are computer generated impressions of how the property may look and are indicative only. External details or finishes may vary on individual plots and homes may be built in either detached or attached styles depending on the development layout. Exact specifications, window styles and whether a property is left or right handed may differ from plot to plot. Please speak to our sales consultant for specific plot details.

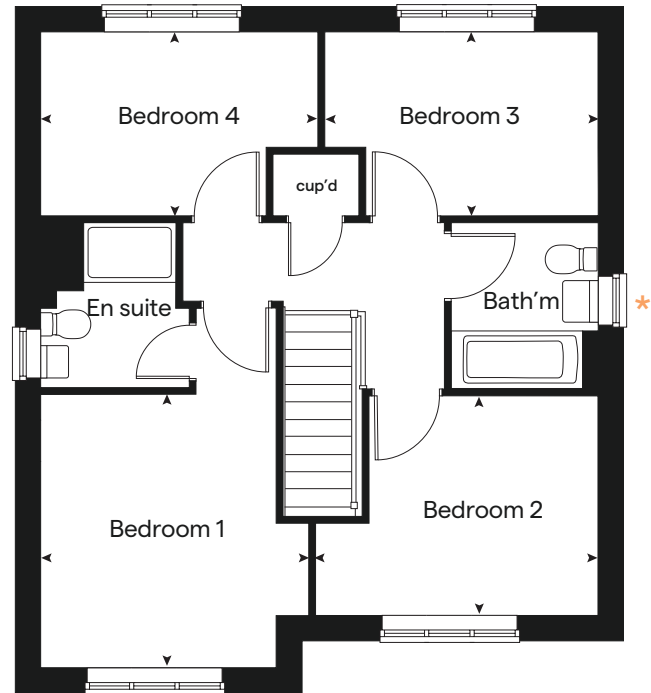
* Windows apply to selected plots only.
Please see sales consultant for further details.

Produced by the Vistry Group Design Studio.
When you have finished with this leaflet please recycle it.
The Juniper DS08288 / 07.24

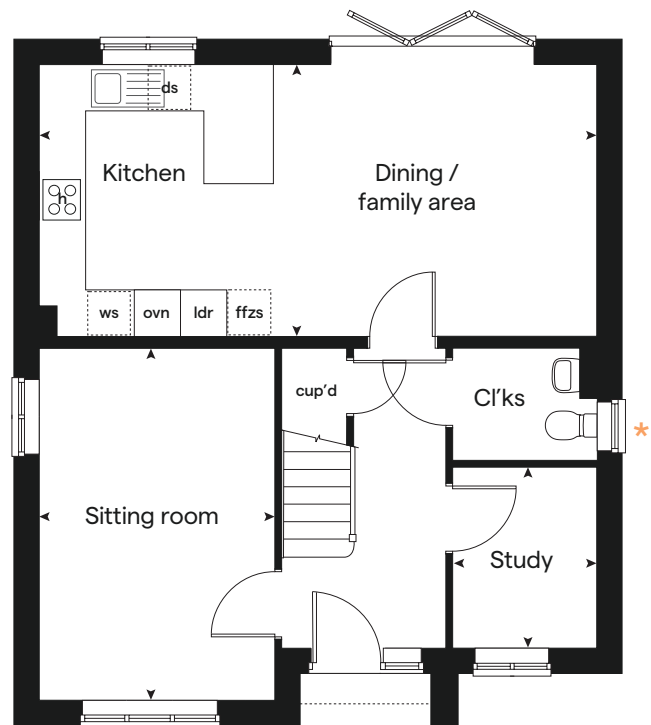


built by
Bovis Homes

First floor



Ground floor





Great Oldbury

Stonehouse

Specification



built
by



Great Oldbury

Stonehouse

Use this guide to see what features are included in your new home.



3 bedroom

Homs 289 & 290

Homes 180 - 183

Homes 204, 272, 314 & 327

Homes 328 - 332

Homes 179, 184, 195, 245, 339 & 340

Homes 193, 321 & 322

4 bedroom

Home 341

Homes 199, 279, 280 & 338

Kitchen

Symphony Konzept range kitchen with laminate worktop	■	■	■	■	■	■	■	■
Stainless steel sink and drainer (single bowl) with chrome mixer tap	■	■	■	■	■	■	■	■
Stainless steel sink and drainer (single bowl) with chrome mixer tap in utility			■		■	■		
Indesit hob (60cm) with Indesit built-in single under oven, with stainless steel splashback and integrated silver hood	■	■	■	■	■	■	■	■
White pendant light holder	■	■	■	■	■	■	■	■
Fridge/ freezer space	■	■	■	■	■	■	■	■
Space for integrated dishwasher with plumbing and electrics	■	■	■	■	■	■	■	■
Space for washing machine with plumbing and electrics in kitchen	■	■		■				■
Space for washing machine with plumbing and electrics in utility			■		■	■	■	

Bathrooms and en suite(s)

Ideal Standard contemporary white Tempo sanitaryware	■	■	■	■	■	■	■	■
Ideal Standard close coupled WC to cloakroom	■	■	■	■	■	■	■	■
Ideal Standard low profile shower tray with glass enclosure in ensuite		■	■	■	■	■	■	■
Handheld hair wash attachment in bathroom		■	■	■	■	■	■	■
Shower over the bath	■							
Choice of standard Porcelanosa wall tiling (splashback, 450mm height over bath, and full-height to shower cubicle)	■	■	■	■	■	■	■	■
White batten light holder	■	■	■	■	■	■	■	■
Waste water heat recovery system	■	■	■	■	■	■	■	■

Bedrooms

Dressing area to bedroom 1				■	■	■		
----------------------------	--	--	--	---	---	---	--	--

■ Fitted as standard - included in the property
* Subject to stage of construction

3 bedroom

Homs 289 & 290

Homes 180 - 183

Homes 204, 272, 314 & 327

Homes 328 - 332

Homes 179, 184, 195, 245, 339 & 340

Homes 193, 321 & 322

4 bedroom

Home 341

Homes 199, 279, 280 & 338

Doors and Windows

Front door with multi-point security locking system and security chain	■	■	■	■	■	■	■	■
PVCu double glazing to windows	■	■	■	■	■	■	■	■
Double glazed PVCu French doors	■	■	■	■	■	■		
Double glazed bi-fold doors							■	■
Paving outside French / bi-fold doors	■	■	■	■	■	■	■	■

General

PV solar panels	■	■	■	■	■	■	■	■
White painted walls and smooth white ceilings	■	■	■	■	■	■	■	■
TV point to lounge and family room (where applicable)	■	■	■	■	■	■	■	■
Master telephone socket to lounge and study where applicable	■	■	■	■	■	■	■	■
Ideal combi-boiler with Honeywell heating control and room thermostat(s)	■	■	■	■	■	■	■	■
Thermostatic valves to all radiators (with the exception of rooms with separate thermostat control)	■	■	■	■	■	■	■	■
Contemporary lantern to front door and wiring only to the rear door	■	■	■	■	■	■	■	■
Mains wired smoke detectors with battery back-up	■	■	■	■	■	■	■	■
Battery powered Carbon Monoxide detector (wall mounted) to be provided for each floor	■	■	■	■	■	■	■	■
Power to garage (where in curtilage of the plot)					■	■	■	■
Electric vehicle charging point	■	■	■	■	■	■	■	■
NHBC Buildmark cover	■	■	■	■	■	■	■	■
First two years' customer service support from Linden Homes	■	■	■	■	■	■	■	■

The specification shown is correct at the time of production. Sage Homes is continually reviewing and updating the specification on all house / apartment types and therefore reserves the right to change specification details. Photographs depict typical Sage Homes interiors and may include optional upgrades. For full details regarding the current specification and finishes, please speak to our sales consultant.

Produced by the Vistry Group Design Studio.

DS08288 / 06.24

