

The Gateway

Bexhill-on-Sea





The Gateway

Bexhill-on-Sea

A taste of local life

bovishomes.co.uk

**Bovis
Homes** 



Welcome to The Gateway



THE GATEWAY
BEXHILL-ON-SEA



The Gateway enjoys a prime situation in the quintessential seaside town of Bexhill-on-Sea!

Located in the heart of East Sussex and nestled between Hastings and Eastbourne this sleepy town comes to life in the summer months with residents and holiday makers enjoying the various beachfront activities.

So if you're looking for a quality new home, in a sought-after location along the South Coast, your search ends here!

Getting around

Bexhill is served by the A259 which is the coastal road between Folkestone and Brighton. There are three nearby railway stations; Cooden Beach, Collington and Bexhill, with regular trains running between Ashford and London. The town benefits from several bus routes connecting it to nearby Hastings, Battle, Eastbourne and various central locations. Just over an hour away is the Shuttle, the Channel ferry ports and Gatwick Airport.

A trip to the shops

The town centre offers a range of high street shops, restaurants, supermarkets and independent retailers. Five minutes away is the Ravenside Retail and Leisure park, comprising of 13 big name stores. To cater for even the most avid shopper there is the Priory Meadow shopping centre in Hastings. For the weekly shop visit the local Tesco.

Taking time out

Located in this charming town is an abundance of leisure and entertainment facilities, including the De La Warr Pavillion, Bexhill Museum, Leisure Centre, Badminton Academy, Leisure Pool, Outdoor Bowls, Sailing, Sea Angling and Rowing clubs.

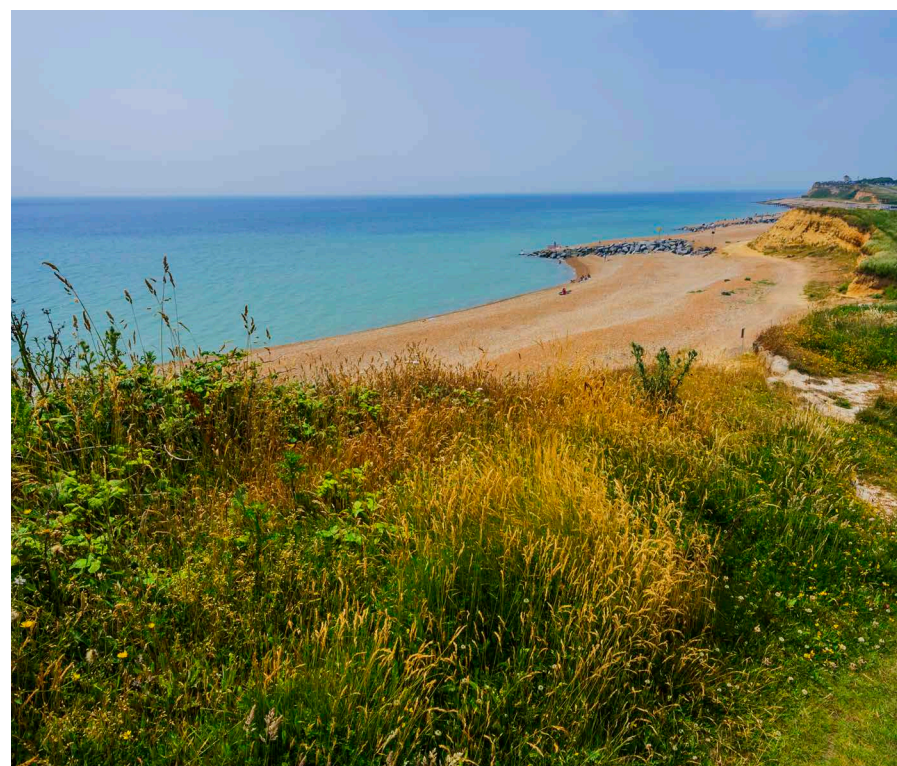
For those with a love of the outdoors, why not enjoy a game of tennis in Egerton Park, outdoor bowling clubs and an indoor bowling pavilion. Bexhill also boasts two of the finest golf courses in Sussex at Cooden Beach and Highwoods.

Looking for something for the kids? Then the Polegrove Recreation Ground is home to Bexhill United football club and is used by the towns cricket and rugby teams.

Part of the district of Rother, Bexhill-on-Sea has enjoyed a colourful past, including hosting the first British Motor race in 1902. The town has an eclectic mix of Victorian, Edwardian and Art deco architecture. Highlights include the 1930's De La Warr pavilion and King George V colonnade on the sea front with views across to Eastbourne, Beachy Head and Hastings. The wide promenade and many gift shops, cafés and entertainment venues gives somewhere for all the family to enjoy.

Education

For young children Bexhill boasts the Glenleigh Park Ducklings Nursery. Parents have the option of several primary schools, all located within a 2 miles radius of The Gateway. They include All Saints C of E Primary School, Charters Ancaster and Chantry Community Primary School. For Secondary education the town is served by Bexhill Academy, Bexhill Sixth Form College and St Richards Catholic College. For further Education there is the University of Brighton.



The Gateway

Bexhill-on-Sea,
East Sussex TN40 2GA

01424 574 013

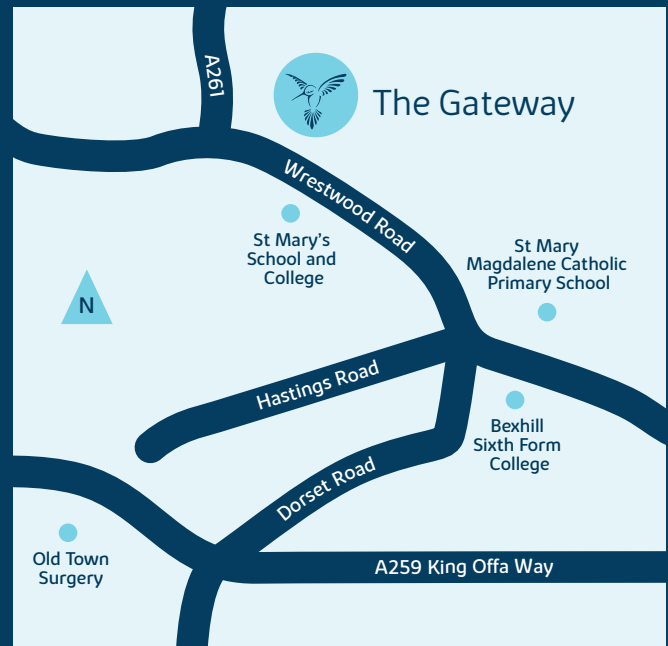
bexhill.sales@bovishomes.co.uk

From Hastings

- Leave Hastings on the A259 heading west
- At the roundabout, take the 3rd exit onto A2036 Hastings Road
- Follow Hastings Road as it merges into Wrestwood Road
- Follow the signage to The Gateway and the development will be on your right hand side

From Eastbourne

- Head north-east on A259 Seaside Road towards Cavendish Place
- At Seaside Roundabout, take the 2nd exit onto A259 Seaside and continue to follow A259
- At Harbour roundabout, take the 1st exit and stay on A259 Pevensey Bay Road
- Turn left onto A259 Wallsend Road and continue to follow the road
- At the roundabout take the 3rd exit and stay on A259
- At the roundabout, take the 3rd exit onto A259 Little Common Road
- Slight left onto W Down Road
- Turn right onto Woodsgate Park
- Turn left onto A269 London Road and continue to follow the road
- Turn right onto A2036 Wrestwood Road
- Follow the signage to The Gateway and the development will be on your left hand side



When you have finished with this leaflet please recycle it.

Cover photograph of Bexhill. Not view from the development. The streetscene shown above has been produced for illustrative purposes only, please check the details of the homes you are interested in with the sales advisor.

Bovis Homes Limited, South East region
11 Tower View, Kings Hill, West Malling, Kent ME19 4UY. Telephone: 01732 280 400

Produced by the Bovis Homes Graphic Design Department.

EBEXH GD54096 / 02.20

**Bovis
Homes** 

The Gateway

Bexhill-on-Sea

2 bedroom home

 The Amberley

3 bedroom home


-  The Southwold
-  The Teal
-  The Crane
-  The Curlew
-  The Goldcrest
-  The Kingfisher
-  The Jay
-  The Sheringham
-  The Cuckoo

4 bedroom home

-  The Wimborne
-  The Canterbury
-  The Dunnock
-  The Wagtail
-  The Montpellier
-  The Nuthatch
-  The Fieldfare

5 bedroom home

-  The Firecrest
-  The Cormorant
-  The Osprey
-  The Falcon
-  The Avocet

-  Affordable housing
-  bridge
-  stream
-  ss substation
-  v visitor space
-  cs cycle store
-  bs bin store





The Amberley

2 bedroom home

bovishomes.co.uk

**Bovis
Homes** 

The Amberley

2 bedroom home

Ground floor	metres	feet / inches
Kitchen	3.07 x 1.85	10' 1" x 6' 1"
Sitting room / dining area	4.52 x 4.05	14' 10" x 13' 3"

First floor	metres	feet / inches
Bedroom 1	4.05 x 2.80	13' 3" x 9' 2"
Bedroom 2	4.05 x 3.42	13' 3" x 11' 3"

The Amberley | P202 EBEXH |

This floorplan has been produced for illustrative purposes only. Room sizes shown are between arrow points as indicated on plan. The dimensions have tolerances of + or -50mm and should not be used other than for general guidance. If specific dimensions are required, enquiries should be made to the sales consultant.

* Alternative window layout applies to selected plots only. Please see sales consultant for further details.

① Windows apply to selected plots only. Please see sales consultant for further details.

ovn	oven	ffzs	fridge freezer space
h	hob	cup'd	cupboard
ws	washing machine space	◀ ▶	measuring points

Please refer to the sales consultant for specific plot details as the illustrations shown are computer generated impressions of how the property may look so are indicative only. External details or finishes may vary on individual plots and homes may be built in either detached or attached styles depending on the development layout. Exact specifications, window styles and whether a property is left or right handed may differ from plot to plot.

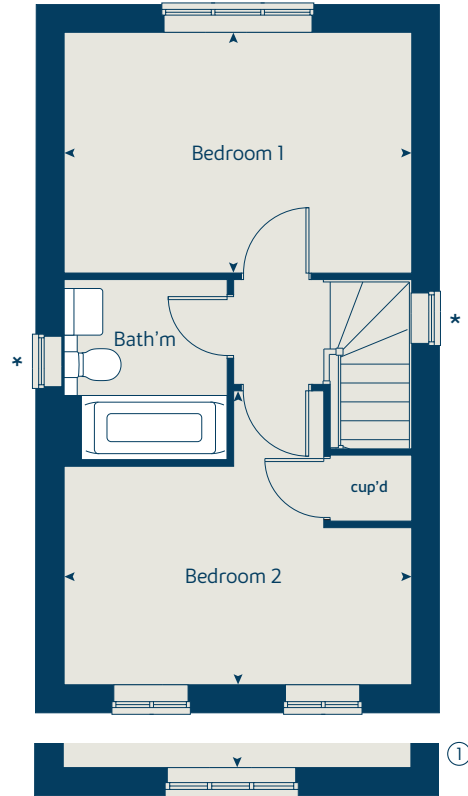
The floorplans shown are not to scale. Measurements are based on the original drawings. Slight variations may occur during construction.

Produced by the Vistry Group Design Studio.

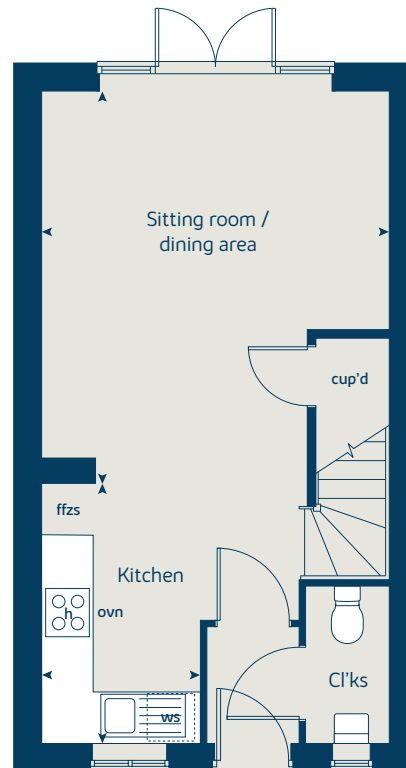
When you have finished with this leaflet please recycle it.

EBEXH GD58295 / 01.21

First floor



Ground floor





The Southwold

3 bedroom home

bovishomes.co.uk

**Bovis
Homes** 

The Southwold

3 bedroom home

Ground floor	metres	feet / inches
Kitchen	2.83 x 2.48	9' 3" x 8' 1"
Sitting room / dining area	5.37 x 4.75	17' 7" x 15' 7"

First floor

Bedroom 1	3.90 x 3.13	12' 9" x 10' 3"
Bedroom 2	3.18 x 2.71	10' 5" x 8' 11"
Bedroom 3	3.18 x 1.96	10' 5" x 6' 5"

The Southwold | P302 Gu Fs EBEXH |

This floorplan has been produced for illustrative purposes only. Room sizes shown are between arrow points as indicated on plan. The dimensions have tolerances of + or -50mm and should not be used other than for general guidance. If specific dimensions are required, enquiries should be made to the sales advisor.

① Alternative window layout applies to selected plots only. Please see sales advisor for further details.

* Windows apply to selected plots only. Please see sales advisor for further details.

ovn	oven	ffzs	fridge freezer space
h	hob	cup'd	cupboard
ds	dishwasher space	< >	measuring points
ws	washing machine space		

Please refer to the sales consultant for specific plot details as the illustrations shown are computer generated impressions of how the property may look so are indicative only. External details or finishes may vary on individual plots and homes may be built in either detached or attached styles depending on the development layout. Exact specifications, window styles and whether a property is left or right handed may differ from plot to plot.

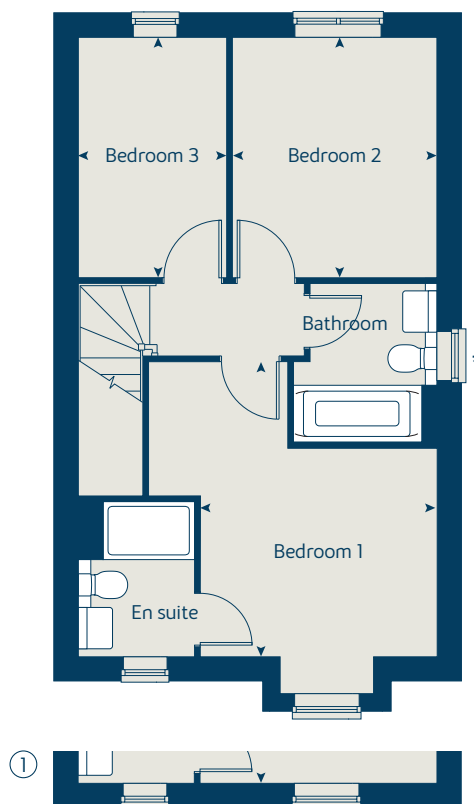
The floorplans shown are not to scale. Measurements are based on the original drawings. Slight variations may occur during construction.

Produced by the Vistry Group Design Studio.

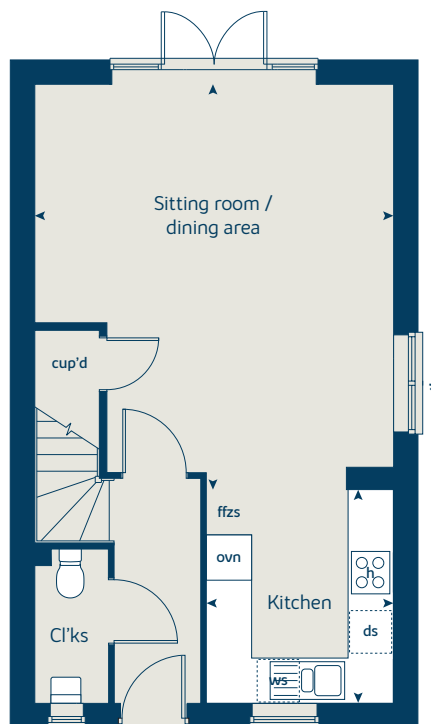
When you have finished with this leaflet please recycle it.

EBEXH GD54096 / 02.20

First floor



Ground floor





The Goldcrest

3 bedroom home

bovishomes.co.uk

**Bovis
Homes** 

The Goldcrest

3 bedroom home

Ground floor	metres	feet / inches
Kitchen / dining room	5.60 x 2.93	18' 4" x 9' 8"
Sitting room	4.98 x 3.42	16' 4" x 11' 3"

First floor

Bedroom 1	4.55 x 3.25	14' 11" x 10' 8"
Bedroom 2	3.46 x 2.74	11' 2" x 9' 0"
Bedroom 3	2.93 x 2.07	9' 8" x 6' 10"

The Goldcrest | SE3072 EBEXH |

This floorplan has been produced for illustrative purposes only. Room sizes shown are between arrow points as indicated on plan. The dimensions have tolerances of + or -50mm and should not be used other than for general guidance. If specific dimensions are required, enquiries should be made to the sales advisor.

ovn	oven	ffzs	fridge freezer space
h	hob	cup'd	cupboard
ds	dishwasher space	◀ ▶	measuring points
ws	washing machine space		

Please refer to the sales consultant for specific plot details as the illustrations shown are computer generated impressions of how the property may look so are indicative only. External details or finishes may vary on individual plots and homes may be built in either detached or attached styles depending on the development layout. Exact specifications, window styles and whether a property is left or right handed may differ from plot to plot.

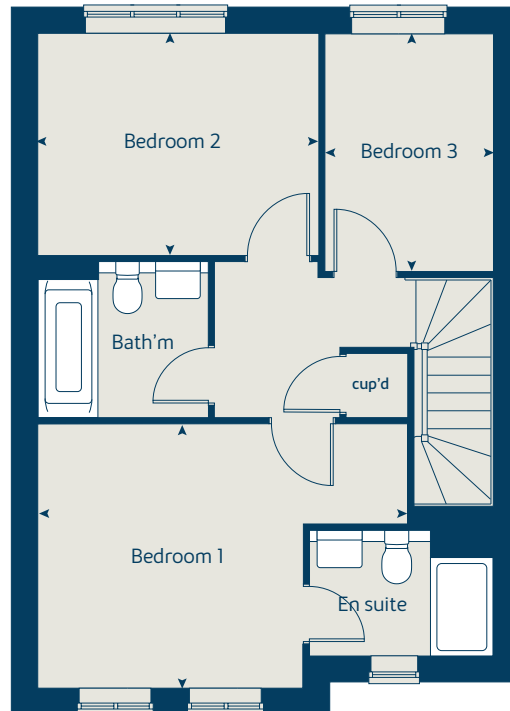
The floorplans shown are not to scale. Measurements are based on the original drawings. Slight variations may occur during construction.

Produced by the Vistry Group Design Studio.

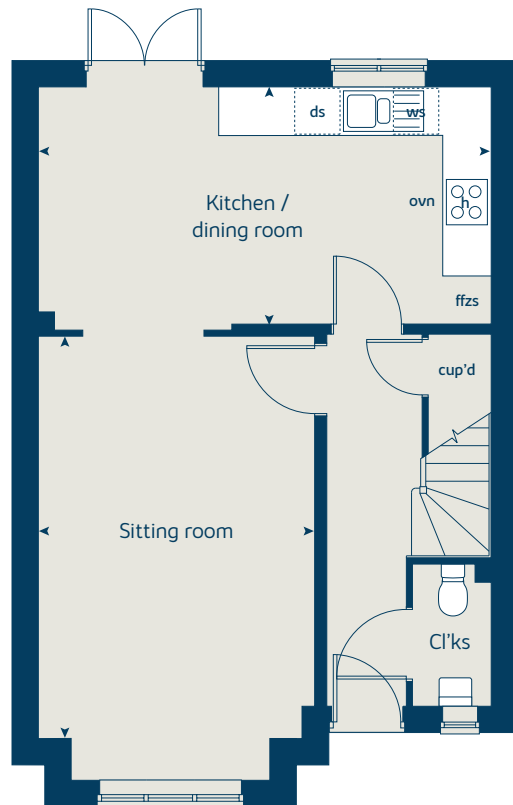
When you have finished with this leaflet please recycle it.

EBEXH GD54096 / 02.20

First floor



Ground floor





The Sheringham

3 bedroom home

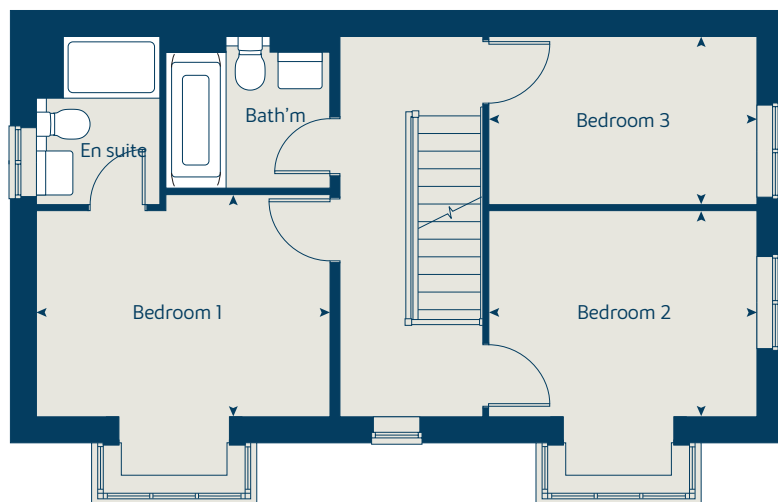
bovishomes.co.uk

**Bovis
Homes** 

The Sheringham

3 bedroom home

First floor



Ground floor	metres	feet / inches
Kitchen / dining area	4.75 x 3.31	15' 7" x 10' 10"
Sitting room	4.75 x 3.30	15' 7" x 10' 10"

First floor

Bedroom 1	3.67 x 2.78	12' 0" x 9' 1"
Bedroom 2	3.35 x 2.57	11' 0" x 8' 5"
Bedroom 3	3.35 x 2.10	11' 0" x 6' 11"

The Sheringham | P303 Gv Fs vt EBEXH B19 |

This floorplan has been produced for illustrative purposes only. Room sizes shown are between arrow points as indicated on plan. The dimensions have tolerances of + or -50mm and should not be used other than for general guidance. If specific dimensions are required, enquiries should be made to the sales advisor.

ovn	oven	ffzs	fridge freezer space
h	hob	cup'd	cupboard
ds	dishwasher space	◀ ▶	measuring points
ws	washing machine space		

Please refer to the sales consultant for specific plot details as the illustrations shown are computer generated impressions of how the property may look so are indicative only. External details or finishes may vary on individual plots and homes may be built in either detached or attached styles depending on the development layout. Exact specifications, window styles and whether a property is left or right handed may differ from plot to plot.

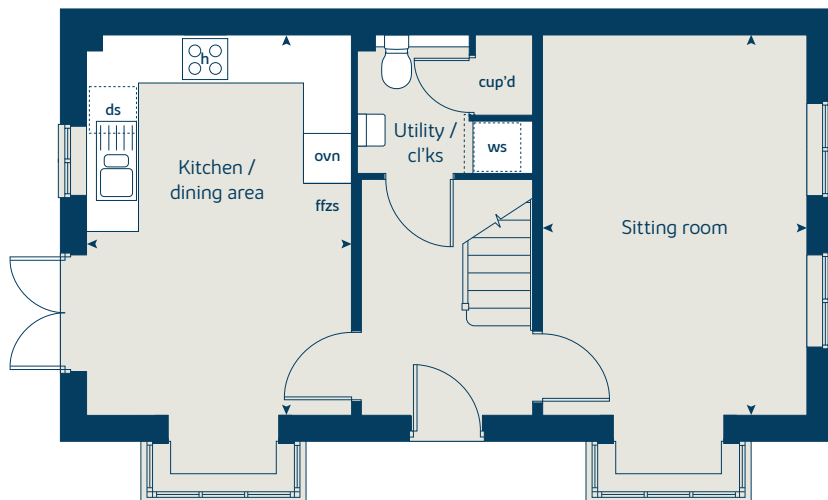
The floorplans shown are not to scale. Measurements are based on the original drawings. Slight variations may occur during construction.

Produced by the Vistry Group Design Studio.

When you have finished with this leaflet please recycle it.

EBEXH GD54096 / 02.20

Ground floor



**Bovis
Homes**



THE GATEWAY
BEXHILL-ON-SEA



The Cuckoo

4 bedroom home

bovishomes.co.uk

**Bovis
Homes** 

The Cuckoo

4 bedroom home

Ground floor	metres	feet / inches
Kitchen / dining area	4.75 x 3.31	15' 7" x 10' 10"
Sitting room	4.75 x 3.30	15' 7" x 10' 10"

First floor

Bedroom 1	3.68 x 2.76	12' 1" x 9' 1"
Bedroom 2	3.35 x 2.57	11' 0" x 8' 5"
Bedroom 3	3.35 x 2.10	11' 0" x 6' 11"
Bedroom 4	3.72 x 2.87	12' 3" x 9' 5"

The Cuckoo | SE3071 EBEXH |

This floorplan has been produced for illustrative purposes only. Room sizes shown are between arrow points as indicated on plan. The dimensions have tolerances of + or -50mm and should not be used other than for general guidance. If specific dimensions are required, enquiries should be made to the sales consultant.

ovn	oven	ffzs	fridge freezer space
h	hob	cup'd	cupboard
ws	washing machine space	◀ ▶	measuring points
ds	dishwasher space		

Please refer to the sales consultant for specific plot details as the illustrations shown are computer generated impressions of how the property may look so are indicative only. External details or finishes may vary on individual plots and homes may be built in either detached or attached styles depending on the development layout. Exact specifications, window styles and whether a property is left or right handed may differ from plot to plot.

The floorplans shown are not to scale. Measurements are based on the original drawings. Slight variations may occur during construction.

Produced by the Vistry Group Design Studio.

When you have finished with this leaflet please recycle it.

EBEXH GD60316 / 07.21

First floor



Ground floor





The Montpellier

4 bedroom home

bovishomes.co.uk

**Bovis
Homes** 

The Montpellier

4 bedroom home

Ground floor**	metres	feet / inches
Kitchen	3.76 x 2.43	12' 4" x 8' 0"
Dining area	3.17 x 3.03	10' 5" x 9' 11"
Sitting room	5.60 x 4.28	18' 5" x 14' 1"

First floor**	metres	feet / inches
Bedroom 1	3.98 x 3.09	13' 1" x 10' 2"
Bedroom 2	3.41 x 3.04	11' 2" x 10' 0"
Bedroom 3	3.40 x 2.48	11' 2" x 8' 2"
Bedroom 4	2.44 x 2.42	8' 0" x 7' 11"

The Montpellier | P403VT1 Gq Fm vt EBEXH |

This floorplan has been produced for illustrative purposes only. Room sizes shown are between arrow points as indicated on plan. The dimensions have tolerances of + or -50mm and should not be used other than for general guidance. If specific dimensions are required, enquiries should be made to the sales advisor.

* Windows apply to selected plots only. Please see sales advisor for further details.

** Dimensions will differ to plot 6 only. Please see sales advisor for further details.

ovn	oven	ffzs	fridge freezer space
h	hob	w	wardrobe
ds	dishwasher space	cup'd	cupboard
ws	washing machine space	◀ ▶	measuring points

Please refer to the sales consultant for specific plot details as the illustrations shown are computer generated impressions of how the property may look so are indicative only. External details or finishes may vary on individual plots and homes may be built in either detached or attached styles depending on the development layout. Exact specifications, window styles and whether a property is left or right handed may differ from plot to plot.

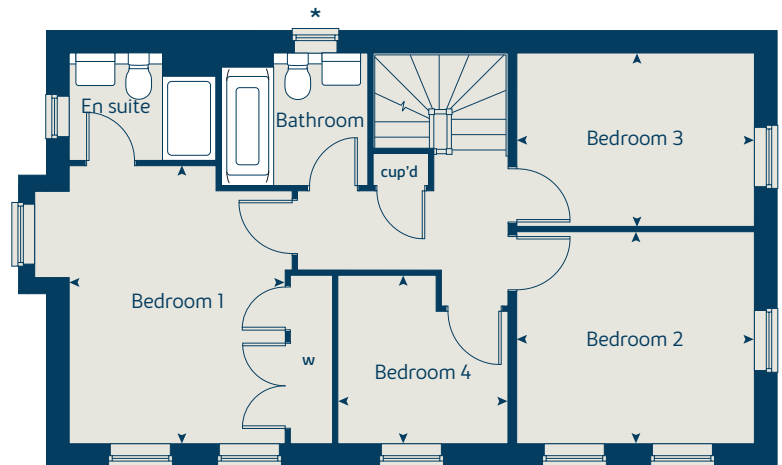
The floorplans shown are not to scale. Measurements are based on the original drawings. Slight variations may occur during construction.

Produced by the Vistry Group Design Studio.

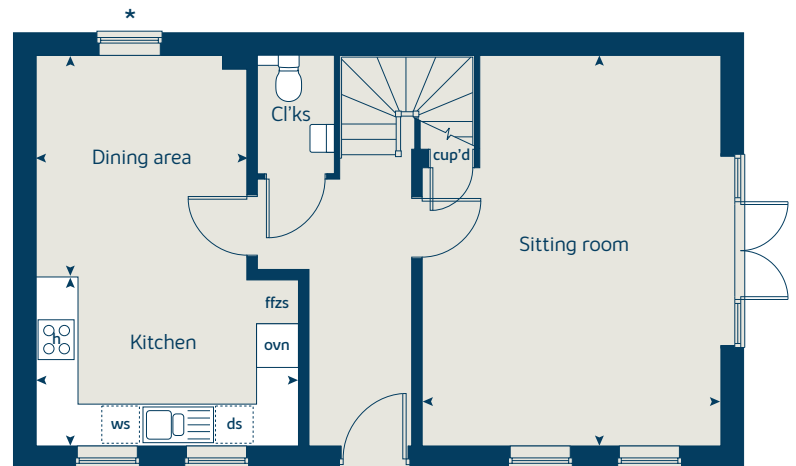
When you have finished with this leaflet please recycle it.

EBEXH GD54096 / 02.20

First floor



Ground floor





The Canterbury

4 bedroom home

bovishomes.co.uk

**Bovis
Homes** 

The Canterbury

4 bedroom home

Ground floor	metres	feet / inches
Kitchen / dining area	7.70 x 3.15	25' 3" x 10' 3"
Sitting room	4.50 x 3.50	14' 9" x 11' 6"
Study	2.32 x 2.02	7' 8" x 6' 8"

First floor

Bedroom 1	3.54 x 3.26	11' 8" x 10' 9"
Bedroom 2	4.36 x 2.82	14' 4" x 9' 2"
Bedroom 3	3.05 x 3.02	10' 0" x 8' 2"
Bedroom 4	3.21 x 2.49	10' 6" x 8' 2"

The Canterbury | P404 vt EBEXH |

This floorplan has been produced for illustrative purposes only. Room sizes shown are between arrow points as indicated on plan. The dimensions have tolerances of + or -50mm and should not be used other than for general guidance. If specific dimensions are required, enquiries should be made to the sales advisor.

ovn	oven	ffzs	fridge freezer space
h	hob	cup'd	cupboard
ds	dishwasher space	w	wardrobe
ws	washing machine space	< >	measuring points

Please refer to the sales consultant for specific plot details as the illustrations shown are computer generated impressions of how the property may look so are indicative only. External details or finishes may vary on individual plots and homes may be built in either detached or attached styles depending on the development layout. Exact specifications, window styles and whether a property is left or right handed may differ from plot to plot.

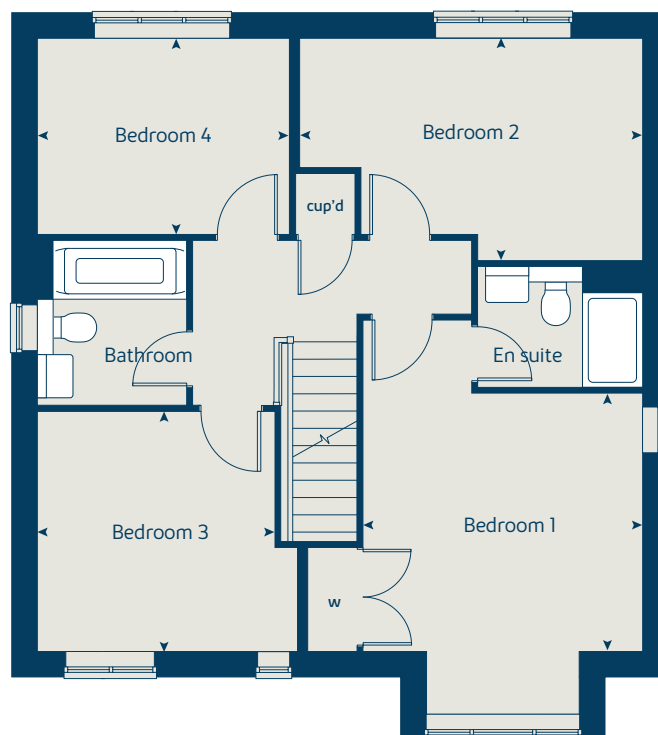
The floorplans shown are not to scale. Measurements are based on the original drawings. Slight variations may occur during construction.

Produced by the Vistry Group Design Studio.

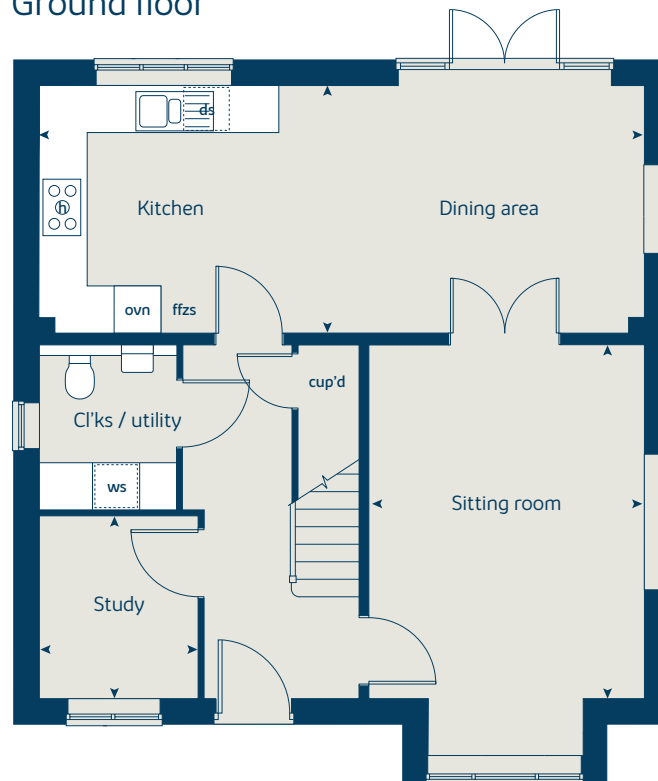
When you have finished with this leaflet please recycle it.

EBEXH GD54096 / 02.20

First floor



Ground floor





The Firecrest

5 bedroom home

bovishomes.co.uk

**Bovis
Homes** 

The Firecrest

5 bedroom home

Ground floor	metres	feet / inches
Kitchen / dining area	8.00 x 3.60	26' 3" x 11' 10"
Sitting room	5.80 x 3.80	19' 0" x 12' 6"
Study	2.53 x 2.10	8' 4" x 6' 11"

First floor	metres	feet / inches
Bedroom 1	3.80 x 3.62	12' 6" x 11' 10"
Bedroom 2	3.08 x 3.00	10' 1" x 9' 10"
Bedroom 3	3.62 x 2.65	11' 10" x 8' 8"
Bedroom 4	3.05 x 2.97	9' 10" x 9' 9"
Bedroom 5	3.05 x 2.18	10' 0" x 7' 2"

ovn	oven	ffzr	fridge freezer
h	hob	w	wardrobe
wm	washing machine	cyl	hot water cylinder
dw	dishwasher	< >	measuring points

The Firecrest | SE5027 (P508) EBEXH |

The floorplan has been produced for illustrative purposes only. Room sizes shown are between arrow points as indicated on plan. The dimensions have tolerances of + or -50mm and should not be used other than for general guidance. If specific dimensions are required, enquiries should be made to the sales consultant. The floor plans shown are not to scale. Measurements are based on the original drawings. Slight variations may occur during construction.

The illustrations shown are computer generated impressions of how the property may look and are indicative only. External details or finishes may vary on individual plots and homes may be built in either detached or attached styles depending on the development layout. Exact specifications, window styles and whether a property is left or right-handed may differ from plot to plot. Please speak to our sales consultant for specific plot details.

① Balcony applies to plot 9 only. Please see sales consultant for further details.

* Windows apply to plots 69, 122 and 123 only. Please see sales consultant for further details.

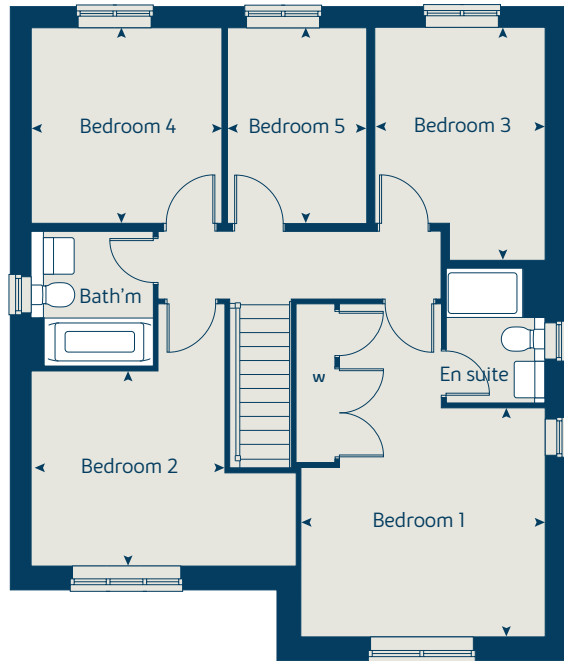
When you have finished with this leaflet please recycle it.

EBEXH DS09441 / 03.24

Bovis Homes



First floor



Ground floor



THE GATEWAY
BEXHILL-ON-SEA



The Avocet

5 bedroom home

bovishomes.co.uk



The Avocet

5 bedroom home

Ground floor	metres	feet / inches
Kitchen / family area	6.12 x 3.68	20' 3" x 12' 1"
Sitting room	4.60 x 3.85	15' 1" x 12' 7"
Dining room	3.68 x 3.10	12' 1" x 10' 2"
Study	3.00 x 2.40	9' 10" x 7' 10"

First floor

Bedroom 1	6.10 x 3.45	20' 1" x 11' 3"
Bedroom 2	3.75 x 3.10	12' 4" x 10' 2"
Bedroom 3	3.06 x 2.70	10' 0" x 8' 10"
Bedroom 4	3.00 x 2.70	9' 10" x 8' 10"
Bedroom 5	3.85 x 3.22	12' 7" x 10' 7"

The Avocet | SE5031 EBEXH |

This floorplan has been produced for illustrative purposes only. Room sizes shown are between arrow points as indicated on plan. The dimensions have tolerances of + or -50mm and should not be used other than for general guidance. If specific dimensions are required, enquiries should be made to the sales advisor.

ovn	oven	cyl	hot water cylinder
h	hob	w	wardrobe
dw	dishwasher	cup'd	cupboard
ws	washing machine space	< >	measuring points
ffzr	fridge freezer		

Please refer to the sales consultant for specific plot details as the illustrations shown are computer generated impressions of how the property may look so are indicative only. External details or finishes may vary on individual plots and homes may be built in either detached or attached styles depending on the development layout. Exact specifications, window styles and whether a property is left or right handed may differ from plot to plot.

The floorplans shown are not to scale. Measurements are based on the original drawings. Slight variations may occur during construction.

Produced by the Vistry Group Design Studio.

When you have finished with this leaflet please recycle it.

EBEXH GD60316 / 07.21

First floor



Ground floor

