

Meadow View

Crowborough



Meadow View

Crowborough



This plan has been produced for home identification purposes only and may be subject to change. Please check the details of your chosen plot and house type with the sales consultant. Development layout plan correct at time of going to print.

Produced by the Vistry Group Design Studio.

SITECODE DS04976 / 07.23





The Holly

2 bedroom home

bovishomes.co.uk



The Holly

2 bedroom home

Ground floor	metres	feet / inches
Kitchen / dining room	4.74 x 3.24	15' 6" x 10' 7"
Sitting room	3.72 x 3.67	12' 2" x 12' 0"

First floor

Bedroom 1	3.59 x 3.20	11' 10" x 10' 6"
Bedroom 2	4.74 x 3.39	15' 7" x 11' 2"

ovn	oven	ldr	larder
h	hob	ffzs	fridge freezer space
ds	dishwasher space	cup'd	cupboard
ws	washing machine space	◀ ▶	measuring points

The Holly | X204 01 Crowborough |

The floorplan has been produced for illustrative purposes only. Room sizes shown are between arrow points as indicated on plan. The dimensions have tolerances of + or -50mm and should not be used other than for general guidance. If specific dimensions are required, enquiries should be made to the sales consultant. The floor plans shown are not to scale. Measurements are based on the original drawings. Slight variations may occur during construction.

The illustrations shown are computer generated impressions of how the property may look and are indicative only. External details or finishes may vary on individual plots and homes may be built in either detached or attached styles depending on the development layout. Exact specifications, window styles and whether a property is left or right-handed may differ from plot to plot. Please speak to our sales consultant for specific plot details.

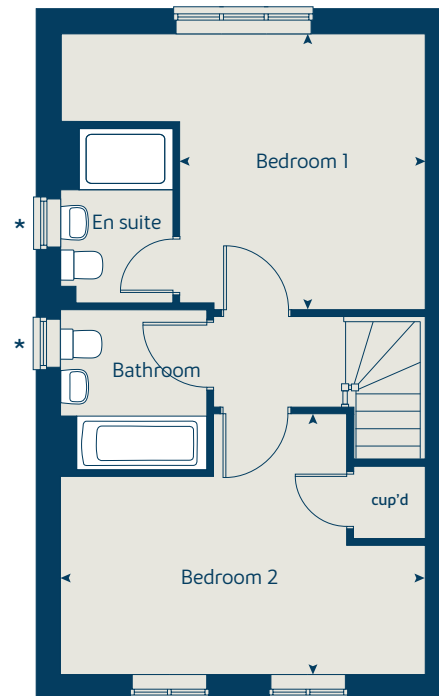
* Windows apply to selected plots only. Please see sales consultant for further details.

Produced by the Vistry Group Design Studio.

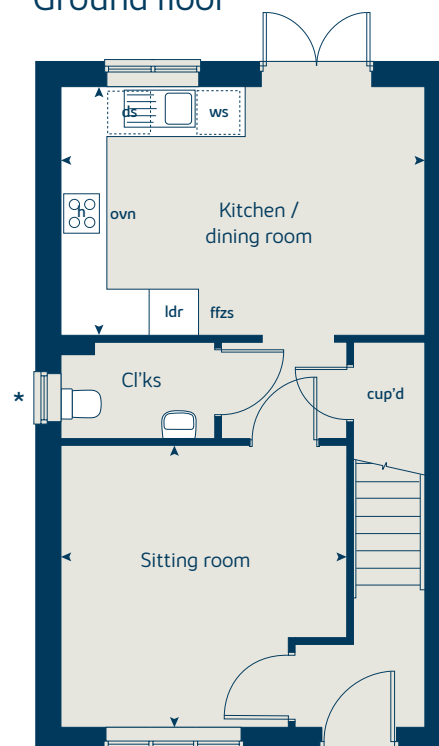
When you have finished with this leaflet please recycle it.

DS04976 / 04.24

First floor



Ground floor





The Cypress

3 bedroom home

bovishomes.co.uk

**Bovis
Homes** 

The Cypress

3 bedroom home

Ground floor	metres	feet / inches
Kitchen / dining area	5.57 x 3.18	18' 2" x 10' 4"
Sitting room	4.46 x 3.45	14' 6" x 11' 3"

First floor	metres	feet / inches
Bedroom 1	4.16 x 3.32	13' 6" x 10' 8"
Bedroom 2	3.31 x 2.87	10' 8" x 9' 4"
Bedroom 3	3.57 x 2.21	11' 7" x 7' 2"

ovn	oven	ffzs	fridge freezer space
h	hob	cup'd	cupboard
ds	dishwasher space	◀ ▶	measuring points
ws	washing machine space		

The Cypress | X308 (IF) 01 Crowborough |

The floorplan has been produced for illustrative purposes only. Room sizes shown are between arrow points as indicated on plan. The dimensions have tolerances of + or -50mm and should not be used other than for general guidance. If specific dimensions are required, enquiries should be made to the sales consultant. The floor plans shown are not to scale. Measurements are based on the original drawings. Slight variations may occur during construction.

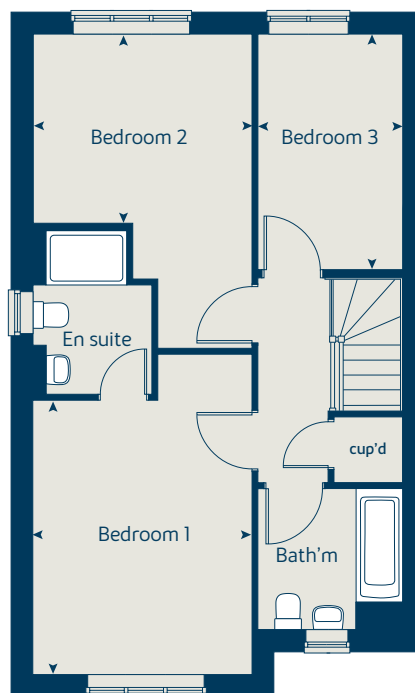
The illustrations shown are computer generated impressions of how the property may look and are indicative only. External details or finishes may vary on individual plots and homes may be built in either detached or attached styles depending on the development layout. Exact specifications, window styles and whether a property is left or right-handed may differ from plot to plot. Please speak to our sales consultant for specific plot details.

Produced by the Vistry Group Design Studio.

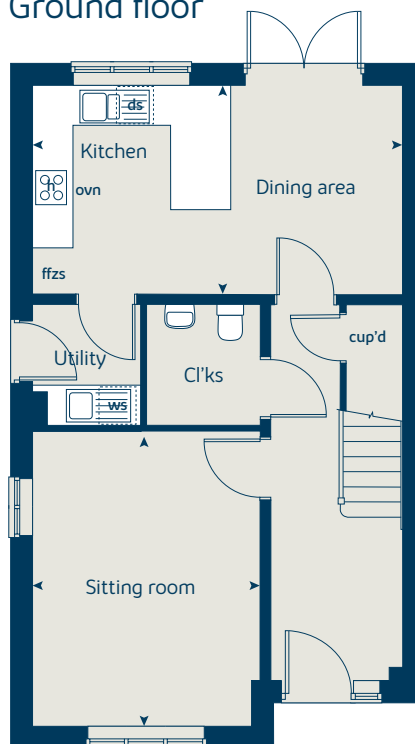
When you have finished with this leaflet please recycle it.

DS04976 / 04.24

First floor



Ground floor





The Hazel

3 bedroom home

bovishomes.co.uk

**Bovis
Homes** 

The Hazel

3 bedroom home

Ground floor	metres	feet / inches
Kitchen / dining room	5.24 x 3.03	17' 0" x 9' 9"
Sitting room	4.18 x 3.71	13' 8" x 12' 0"

First floor	metres	feet / inches
Bedroom 1	3.59 x 3.33	11' 7" x 10' 9"
Bedroom 2	2.95 x 2.74	9' 3" x 9' 0"
Bedroom 3	3.53 x 2.19	11' 5" x 7' 2"

ovn	oven	ffzs	fridge freezer space
h	hob	cup'd	cupboard
ds	dishwasher space	◀ ▶	measuring points
ws	washing machine space		

The Hazel | X305 01 Crowborough |

The floorplan has been produced for illustrative purposes only. Room sizes shown are between arrow points as indicated on plan. The dimensions have tolerances of + or -50mm and should not be used other than for general guidance. If specific dimensions are required, enquiries should be made to the sales consultant. The floor plans shown are not to scale. Measurements are based on the original drawings. Slight variations may occur during construction.

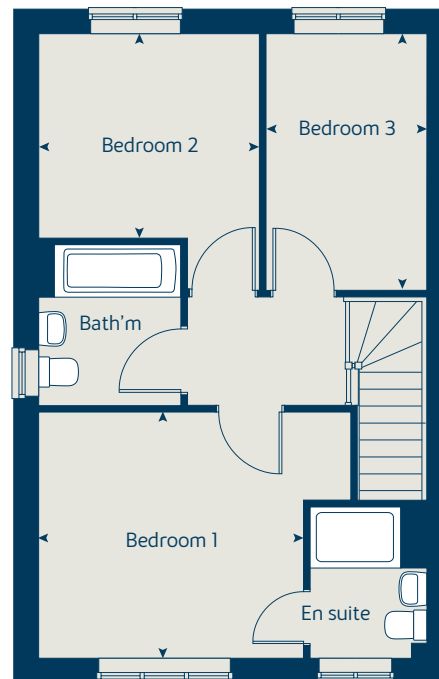
The illustrations shown are computer generated impressions of how the property may look and are indicative only. External details or finishes may vary on individual plots and homes may be built in either detached or attached styles depending on the development layout. Exact specifications, window styles and whether a property is left or right-handed may differ from plot to plot. Please speak to our sales consultant for specific plot details.

Produced by the Vistry Group Design Studio.

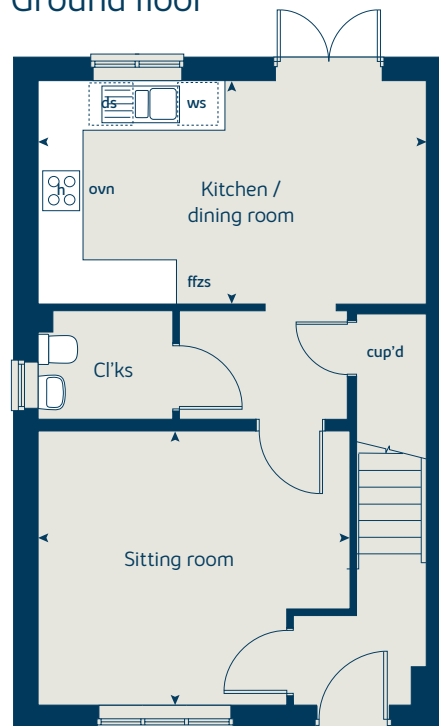
When you have finished with this leaflet please recycle it.

DS04976 / 04.24

First floor



Ground floor





The Spruce

3 bedroom home

bovishomes.co.uk

**Bovis
Homes** 

The Spruce

3 bedroom home

Ground floor	metres	feet / inches
Kitchen	3.16 x 2.69	10' 4" x 8' 8"
Dining area	3.14 x 2.36	10' 3" x 7' 7"
Sitting room	5.57 x 3.37	18' 2" x 11' 0"

First floor

Bedroom 1	3.35 x 3.35	11' 0" x 11' 0"
Bedroom 2	3.59 x 3.26	11' 7" x 10' 6"
Bedroom 3	3.63 x 2.17	11' 9" x 7' 11"

ovn	oven	ffzs	fridge freezer space
h	hob	cup'd	cupboard
ds	dishwasher space	◀ ▶	measuring points
ws	washing machine space		

The Spruce | X307 (IF) 01 Crowborough |

The floorplan has been produced for illustrative purposes only. Room sizes shown are between arrow points as indicated on plan. The dimensions have tolerances of + or -50mm and should not be used other than for general guidance. If specific dimensions are required, enquiries should be made to the sales consultant. The floor plans shown are not to scale. Measurements are based on the original drawings. Slight variations may occur during construction.

The illustrations shown are computer generated impressions of how the property may look and are indicative only. External details or finishes may vary on individual plots and homes may be built in either detached or attached styles depending on the development layout. Exact specifications, window styles and whether a property is left or right-handed may differ from plot to plot. Please speak to our sales consultant for specific plot details.

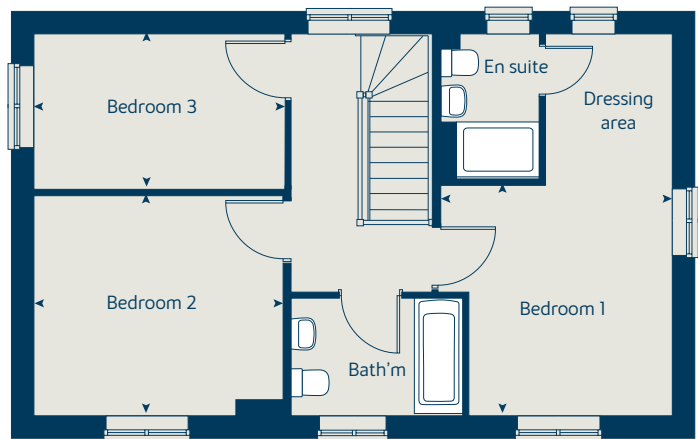
① Alternative layout applies to selected plots only. Please see sales consultant for further details.

Produced by the Vistry Group Design Studio.

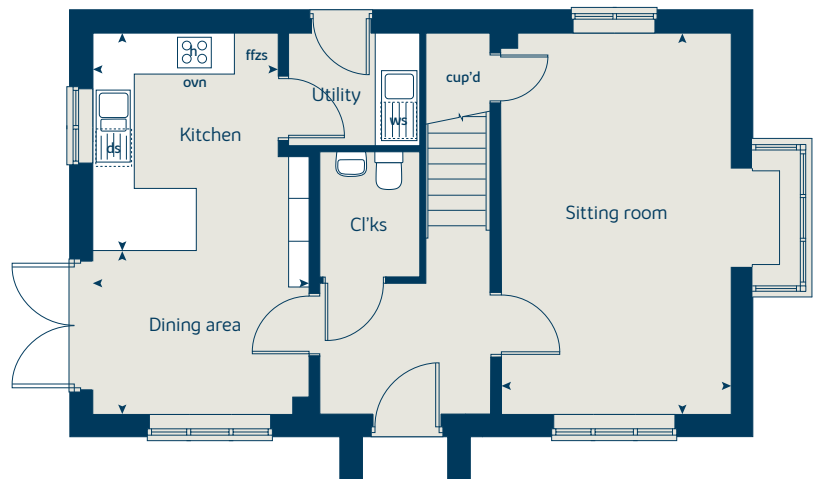
When you have finished with this leaflet please recycle it.

DS04976 / 04.24

First floor



Ground floor





The Aspen

4 bedroom home

bovishomes.co.uk



The Aspen

4 bedroom home

Ground floor	metres	feet / inches
Kitchen / dining area	7.77 x 3.37	25' 4" x 11' 0"
Sitting room	5.04 x 3.39	16' 5" x 11' 1"
Study	2.03 x 2.03	6' 8" x 6' 8"

First floor

Bedroom 1	4.52 x 3.82	14' 8" x 12' 5"
Bedroom 2	3.87 x 3.11	12' 7" x 10' 2"
Bedroom 3	4.07 x 2.42	13' 3" x 7' 9"
Bedroom 4	3.61 x 2.45	11' 8" x 8' 0"

ovn	oven	ffzr	fridge freezer
h	hob	ldr	larder
ds	dishwasher space	cup'd	cupboard
ws	washing machine space	< >	measuring points

The Aspen | X414 (IF) 01 Crowborough |

The floorplan has been produced for illustrative purposes only. Room sizes shown are between arrow points as indicated on plan. The dimensions have tolerances of + or -50mm and should not be used other than for general guidance. If specific dimensions are required, enquiries should be made to the sales consultant. The floor plans shown are not to scale. Measurements are based on the original drawings. Slight variations may occur during construction.

The illustrations shown are computer generated impressions of how the property may look and are indicative only. External details or finishes may vary on individual plots and homes may be built in either detached or attached styles depending on the development layout. Exact specifications, window styles and whether a property is left or right-handed may differ from plot to plot. Please speak to our sales consultant for specific plot details.

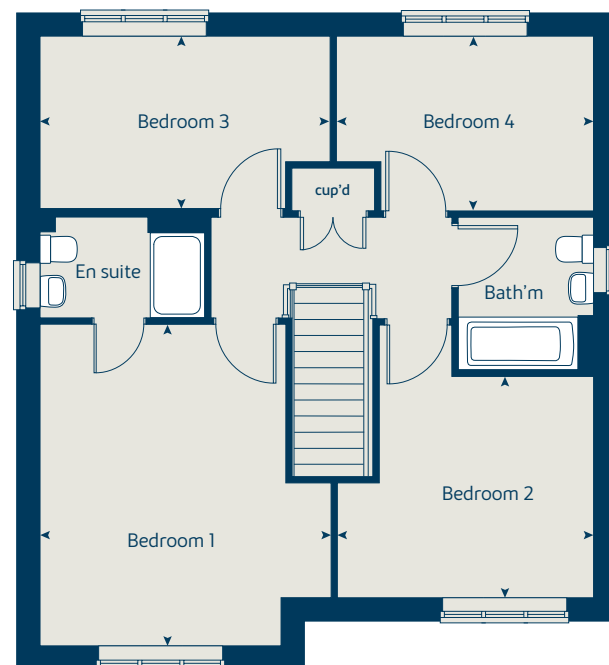
- ① Bay window applies to plots 1 and 147 only. Please see sales consultant for further details.
- ② Bay window applies to plot 63 only. Please see sales consultant for further details.

Produced by the Vistry Group Design Studio.

When you have finished with this leaflet please recycle it.

DS04976 / 04.24

First floor



Ground floor





The Chestnut

4 bedroom home

bovishomes.co.uk

**Bovis
Homes** 

The Chestnut

4 bedroom home

Ground floor	metres	feet / inches
Kitchen	3.91 x 3.04	12' 10" x 9' 11"
Dining / family area	4.37 x 2.96	14' 4" x 9' 9"
Sitting room	4.97 x 3.40	16' 4" x 11' 1"
Study	3.40 x 1.81	11' 1" x 5' 11"

First floor	metres	feet / inches
Bedroom 1	4.48 x 3.24	14' 9" x 10' 8"
Bedroom 2	3.43 x 3.36	11' 3" x 11' 0"
Bedroom 3	3.43 x 2.32	11' 3" x 7' 8"
Bedroom 4	3.21 x 2.36	10' 7" x 7' 9"

ovn	oven	ldr	larder
h	hob	ffzr	fridge freezer
ds	dishwasher space	cup'd	cupboard
ws	washing machine space	◀ ▶	measuring points

The Chestnut | X413 01 Crowborough |

The floorplan has been produced for illustrative purposes only. Room sizes shown are between arrow points as indicated on plan. The dimensions have tolerances of + or -50mm and should not be used other than for general guidance. If specific dimensions are required, enquiries should be made to the sales consultant. The floor plans shown are not to scale. Measurements are based on the original drawings. Slight variations may occur during construction.

The illustrations shown are computer generated impressions of how the property may look and are indicative only. External details or finishes may vary on individual plots and homes may be built in either detached or attached styles depending on the development layout. Exact specifications, window styles and whether a property is left or right-handed may differ from plot to plot. Please speak to our sales consultant for specific plot details.

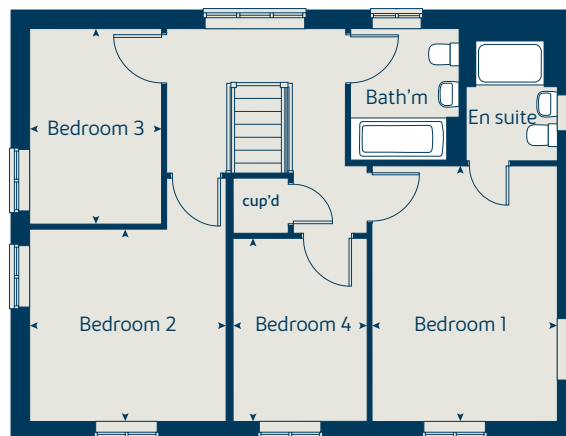
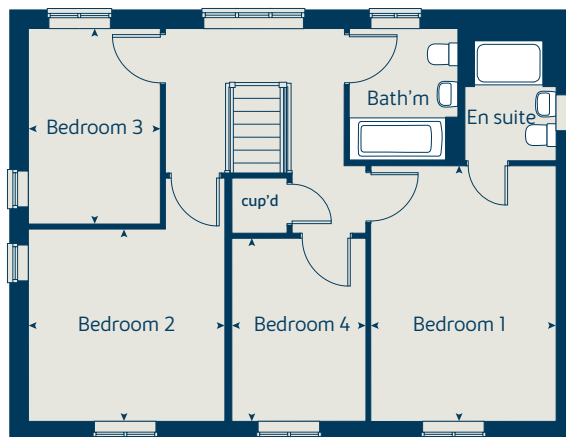
① Alternative layout applies to selected plots only. Please see sales consultant for further details.

Produced by the Vistry Group Design Studio.

When you have finished with this leaflet please recycle it.

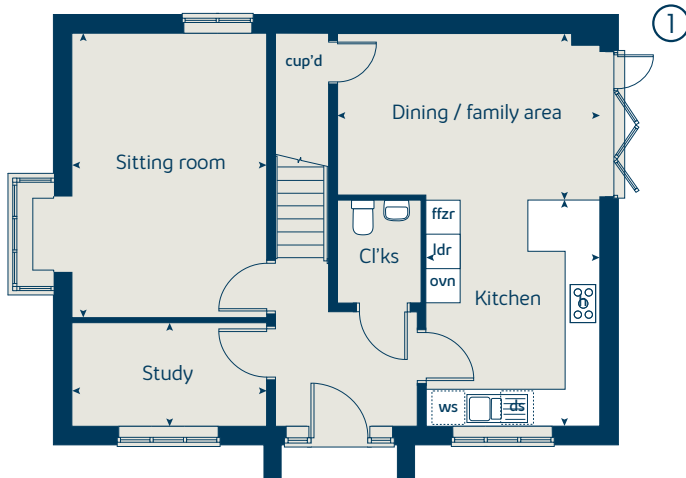
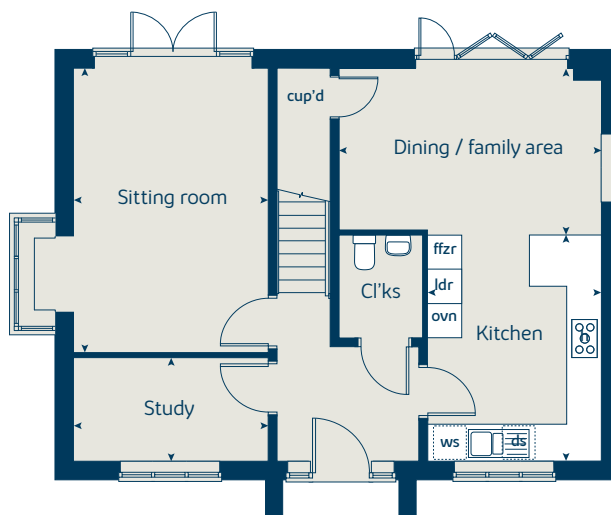
DS04976 / 04.24

First floor



①

Ground floor



①



The Juniper

4 bedroom home

bovishomes.co.uk

**Bovis
Homes** 

The Juniper

4 bedroom home

Ground floor	metres	feet / inches
Kitchen / dining / family area	7.21 x 3.51	23' 7" x 11' 6"
Sitting room	4.55 x 3.04	14' 7" x 10' 0"
Study	2.34 x 1.85	7' 8" x 6' 0"

First floor	metres	feet / inches
Bedroom 1	3.05 x 2.86	10' 0" x 9' 5"
Bedroom 2	2.98 x 2.85	9' 9" x 9' 4"
Bedroom 3	3.60 x 2.39	11' 10" x 7' 10"
Bedroom 4	3.53 x 2.39	11' 7" x 7' 10"

ovn	oven	ldr	larder
h	hob	ffzr	fridge freezer
ds	dishwasher space	cup'd	cupboard
ws	washing machine space	◀ ▶	measuring points

The Juniper | X412 01 Crowborough |

The floorplan has been produced for illustrative purposes only. Room sizes shown are between arrow points as indicated on plan. The dimensions have tolerances of + or -50mm and should not be used other than for general guidance. If specific dimensions are required, enquiries should be made to the sales consultant. The floor plans shown are not to scale. Measurements are based on the original drawings. Slight variations may occur during construction.

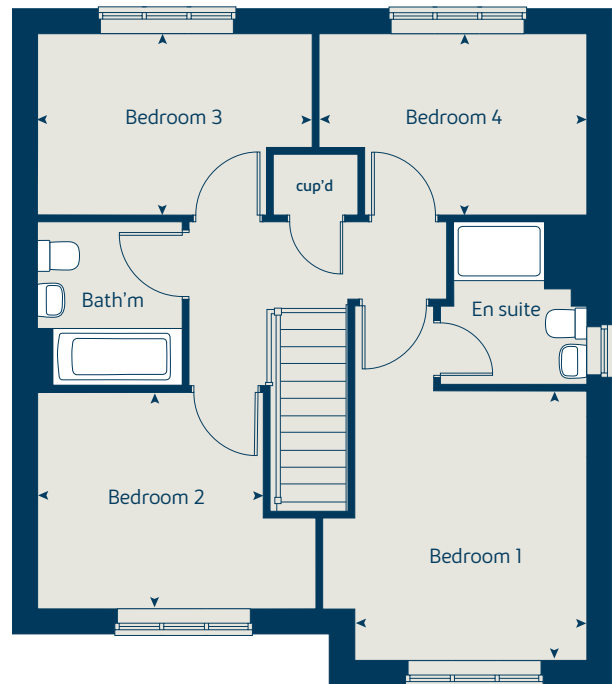
The illustrations shown are computer generated impressions of how the property may look and are indicative only. External details or finishes may vary on individual plots and homes may be built in either detached or attached styles depending on the development layout. Exact specifications, window styles and whether a property is left or right-handed may differ from plot to plot. Please speak to our sales consultant for specific plot details.

Produced by the Vistry Group Design Studio.

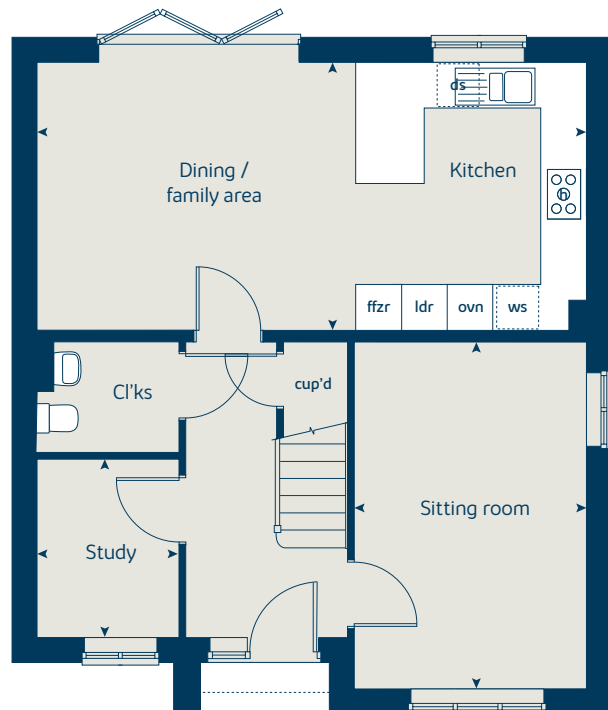
When you have finished with this leaflet please recycle it.

DS04976 / 04.24

First floor



Ground floor





The Mulberry

4 bedroom home

bovishomes.co.uk

**Bovis
Homes** 

The Mulberry

4 bedroom home

Ground floor	metres	feet / inches
Kitchen / dining area	8.16 x 2.92	26' 10" x 9' 7"
Sitting room	4.68 x 3.72	15' 5" x 12' 3"
Study	3.43 x 2.34	11' 3" x 7' 8"

First floor	metres	feet / inches
Bedroom 1	3.73 x 3.49	12' 3" x 11' 0"
Bedroom 2	3.66 x 3.44	12' 1" x 11' 4"
Bedroom 3	4.32 x 2.94	14' 2" x 9' 8"
Bedroom 4	3.75 x 2.58	12' 4" x 8' 5"

ovn	oven	ffzs	fridge freezer space
h	hob	cup'd	cupboard
ds	dishwasher space	◀ ▶	measuring points
ws	washing machine space		

The Mulberry | X418 (IF) Crowborough |

The floorplan has been produced for illustrative purposes only. Room sizes shown are between arrow points as indicated on plan. The dimensions have tolerances of + or -50mm and should not be used other than for general guidance. If specific dimensions are required, enquiries should be made to the sales consultant. The floor plans shown are not to scale. Measurements are based on the original drawings. Slight variations may occur during construction.

The illustrations shown are computer generated impressions of how the property may look and are indicative only. External details or finishes may vary on individual plots and homes may be built in either detached or attached styles depending on the development layout. Exact specifications, window styles and whether a property is left or right-handed may differ from plot to plot. Please speak to our sales consultant for specific plot details.

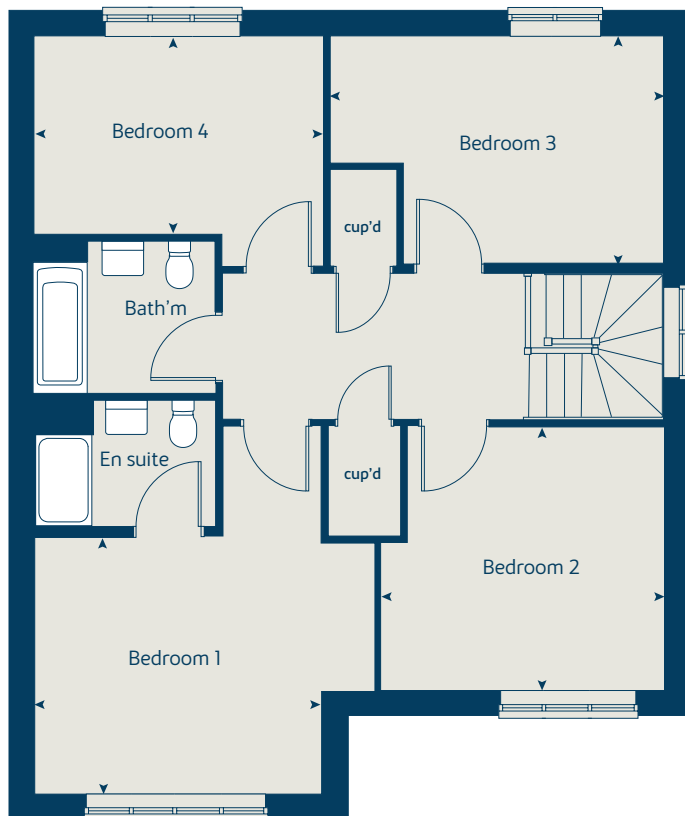
* Bay windows apply to plot 145 only. Please see sales consultant for further details.

Produced by the Vistry Group Design Studio.

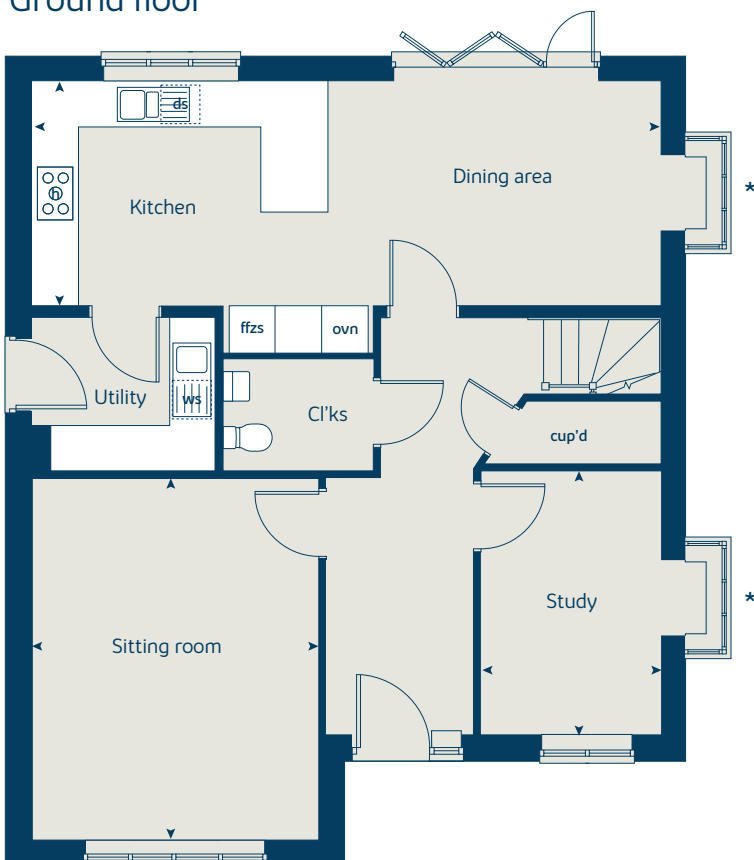
When you have finished with this leaflet please recycle it.

DS04976 / 04.24

First floor



Ground floor





The Birch

5 bedroom home

bovishomes.co.uk

**Bovis
Homes** 

The Birch

5 bedroom home

Ground floor	metres	feet / inches
Kitchen	4.54 x 3.33	14' 8" x 10' 9"
Family / dining area	5.79 x 3.52	18' 9" x 11' 6"
Sitting room	4.30 x 3.61	14' 1" x 11' 10"
Study / dining room	3.41 x 3.00	11' 2" x 9' 10"

First floor	metres	feet / inches
Bedroom 1	3.62 x 3.51	11' 10" x 11' 6"
Bedroom 2	3.92 x 2.90	12' 9" x 9' 6"
Bedroom 3	3.06 x 2.75	10' 0" x 9' 0"
Bedroom 4	3.31 x 2.83	10' 8" x 9' 3"
Bedroom 5	2.83 x 2.69	9' 2" x 8' 8"

ovn	oven	ldr	larder
h	hob	cyl	hot water cylinder
dw	dishwasher	w	wardrobe
ws	washing machine space	cup'd	cupboard
ffzr	fridge freezer	< >	measuring points

The Birch | X518 (IF) 01 Crowborough |

The floorplan has been produced for illustrative purposes only. Room sizes shown are between arrow points as indicated on plan. The dimensions have tolerances of + or -50mm and should not be used other than for general guidance. If specific dimensions are required, enquiries should be made to the sales consultant. The floor plans shown are not to scale. Measurements are based on the original drawings. Slight variations may occur during construction.

The illustrations shown are computer generated impressions of how the property may look and are indicative only. External details or finishes may vary on individual plots and homes may be built in either detached or attached styles depending on the development layout. Exact specifications, window styles and whether a property is left or right-handed may differ from plot to plot. Please speak to our sales consultant for specific plot details.

① Bay windows apply to plots 46 and 146 only. Please see sales consultant for further details.

② Bathroom layout differs to plots 46 and 146 only. Please see sales consultant for further details.

* Utility door omitted to plot 81 only. Please see sales consultant for further details.

** Window omitted to plot 41 only. Please see sales consultant for further details.

Produced by the Vistry Group Design Studio.

When you have finished with this leaflet please recycle it.

DS04976 / 04.24

First floor



Ground floor





Meadow View

Crowborough

Specification

bovishomes.co.uk



Meadow View

Crowborough

Use this guide to see what features are included in your new home. Your sales consultant will be happy to discuss the **Select** range of extras available.



Kitchen

	3 bedroom The Cypress The Spruce	4 bedroom The Juniper The Chestnut The Aspen The Mulberry	5 bedroom The Birch
Choice of Standard fitted kitchen (doors and worktops)	■ ■	■ ■ ■ ■	
Choice of Premium fitted kitchen (doors and worktops)			■
Stainless steel sink and drainer (single and a half bowl) with chrome mixer tap	■ ■	■ ■ ■ ■	■
Stainless steel sink and drainer (single bowl) with chrome mixer tap in utility	■ ■		■
Indesit hob (60cm) with built-in single underoven, with stainless steel splashback and curved glass chimney hood	■ ■		
Hotpoint hob (75 cm) with built-in double high level oven, with glass splashback and curved glass chimney hood		■ ■ ■ ■	
Bosch (75cm) hob with built-in double high level oven, with glass splashback and stainless steel pyramid chimney hood			■
Pendant light fitting	■ ■	■ ■ ■ ■	■
LED under-unit flexible strip lighting			■
Fridge / freezer space	■ ■		
Integrated (Indesit) 50 / 50 fridge freezer		■ ■ ■ ■	■
Space for integrated dishwasher with plumbing and electrics	■ ■	■ ■ ■ ■	
Indesit integrated dishwasher			■
Space for washing machine with plumbing and electrics in kitchen		■ ■ ■ ■	
Space for washing machine with plumbing and electrics in utility	■ ■		■

Bathrooms and en suite(s)

Ideal Standard contemporary white Concept Air sanitaryware	■ ■	■ ■ ■ ■	■
Ideal Standard close coupled WC to cloakroom	■ ■	■ ■ ■ ■	■
Handheld hair wash attachment	■ ■	■ ■ ■ ■	■
Ideal Standard low profile shower tray with glass enclosure to bedroom 1 en suite	■ ■	■ ■ ■ ■	■
Second shower en suite to selected bedrooms			■
Choice of standard Porcelanosa wall tiling (splashback, 450mm over bath, and full-height to shower cubicle)*	■ ■	■ ■ ■ ■	
Choice of standard Porcelanosa wall tiling (half-height to walls with fitted sanitary ware, 450mm over bath, and full-height to shower cubicle)*			■
Chrome bezel LED bulkhead to bathroom and en suite(s)	■ ■	■ ■ ■ ■	■
Chrome towel warmer in bathroom and en suite(s)		■ ■ ■ ■	■

Doors and Windows

	3 bedroom The Cypress The Spruce	4 bedroom The Juniper The Chestnut The Aspen The Mulberry	5 bedroom The Birch
Front door with multi-point security locking system and security chain	■ ■	■ ■ ■ ■	■
Chrome plated front door numerals	■ ■	■ ■ ■ ■	■
PVCu double glazing to windows	■ ■	■ ■ ■ ■	■
Internal cottage style pre-primed doors with brass polished chrome finish handles	■ ■	■ ■ ■ ■	■
Paving outside French door and path to garage personnel door (where applicable)	■ ■	■ ■ ■ ■	■

General

White painted walls and smooth white ceilings	■ ■	■ ■ ■ ■	■
Combined usb / double sockets in kitchen and bedroom 1	■ ■	■ ■ ■ ■	■
Multi-media point in living room	■ ■	■ ■ ■ ■	■
Master telephone socket (plus to study where shown)	■ ■	■ ■ ■ ■	■
Gas central heating with wall mounted combi-boiler, programme selector and room thermostat(s)	■ ■	■ ■ ■ ■	
Gas central heating with wall mounted boiler and separate hot water cylinder, programme selector and room thermostat(s)			■
Thermostatic valves to all radiators (with the exception of rooms with separate thermostat control)	■ ■	■ ■ ■ ■	■
Fitted external tap	■ ■	■ ■ ■ ■	■
External light fitted to front porch and wiring for external light to rear door	■ ■	■ ■ ■ ■	■
Mains wired smoke detectors with battery back-up	■ ■	■ ■ ■ ■	■
Battery powered Carbon Monoxide detector (wall mounted) to be provided for each floor	■ ■	■ ■ ■ ■	■
Power and lighting to 'on plot' garage (where applicable)	■ ■	■ ■ ■ ■	■
Enclosed fenced rear garden, and garden gate (where applicable)	■ ■	■ ■ ■ ■	■
Landscaped front gardens	■ ■	■ ■ ■ ■	■
NHBC Buildmark cover	■ ■	■ ■ ■ ■	■
First two years' customer service support from Bovis Homes	■ ■	■ ■ ■ ■	■

■ Fitted as standard - included in the property
* Subject to stage of construction

So much choice...

Part of the excitement of buying a new home is the thrill of being the first person to live in the property and having a brand new contemporary kitchen and modern bathroom. Our premium brand partners ensure that all of our fixtures and fittings comply with the latest Government building regulations and only branded appliances are installed in your new home.

Once you know what specification comes included, you'll have a choice from our specially selected tiles for your kitchen and bathrooms, as well as kitchen worktops and cupboard doors. You can then use the Bovis Homes **Select** brochure to add the finishing touches to your home to make it extra special for you!

From personalising your bathrooms with stunning ceramics, or adding smooth sliding wardrobes to your master bedroom, there are a wide range of additional options and upgrades available.

The availability of items is subject to the stage of build, and can vary by development and house type. Our sales consultants will be happy to provide guidance.



The specification shown in this leaflet is correct at the time of going to press. Bovis Homes is continually reviewing and updating the specification on all housetypes and therefore reserves the right to change specification details. Photographs depict a typical Bovis Homes interior and may include optional upgrades. For full details regarding current specification and finishes, for the plots you are interested in, please refer to our sales consultant.

Produced by the Vistry Group Design Studio.

When you have finished with this leaflet please recycle it.

Crowborough DS04976 / 05.24

**Bovis
Homes** 