

# Brimington Heights

Brimington





# Brimington Heights

Brimington

Development plan

[bovishomes.co.uk](http://bovishomes.co.uk)

**Bovis  
Homes** 

# Brimington Heights

Brimington

**3 bedroom home**

- The Elm
- The Ash

**4 bedroom home**

- The Juniper
- The Chestnut
- The Aspen
- The Alder

**5 bedroom home**

- The Birch

**Pre-sold homes**

- 1 bedroom homes
- 2 bedroom homes
- 3 bedroom homes

bcp bin collection point  
ss substation





# The Elm

3 bedroom home

[bovishomes.co.uk](http://bovishomes.co.uk)

**Bovis  
Homes** 

# The Elm

## 3 bedroom home

Ground floor	metres	feet / inches
Kitchen / dining area	4.77 x 2.91	15' 8" x 9' 7"
Sitting room	5.10 x 3.64	16' 9" x 11' 11"

First floor	metres	feet / inches
Bedroom 1	4.83 x 2.86	15' 10" x 9' 4"
Bedroom 2	2.86 x 2.37	9' 4" x 7' 9"
Bedroom 3	3.65 x 2.15	12' 0" x 7' 1"

### The Elm | Brimington |

This floorplan has been produced for illustrative purposes only. Room sizes shown are between arrow points as indicated on plan. The dimensions have tolerances of + or -50mm and should not be used other than for general guidance. If specific dimensions are required, enquiries should be made to the sales consultant.

ovn	oven	ffzs	fridge freezer space
h	hob	w	wardrobe
ds	dishwasher space	cup'd	cupboard
ws	washing machine space	◀ ▶	measuring points

Please refer to the sales consultant for specific plot details as the illustrations shown are computer generated impressions of how the property may look so are indicative only. External details or finishes may vary on individual plots and homes may be built in either detached or attached styles depending on the development layout. Exact specifications, window styles and whether a property is left or right handed may differ from plot to plot.

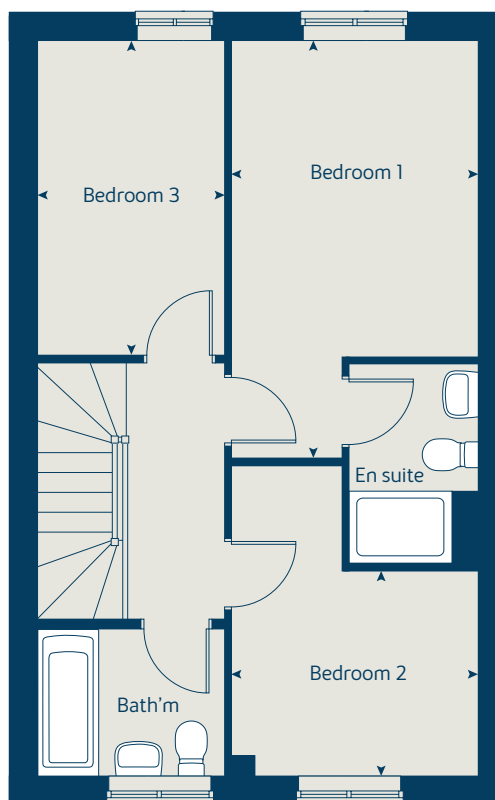
The floorplans shown are not to scale. Measurements are based on the original drawings. Slight variations may occur during construction.

Produced by the Vistry Group Design Studio.

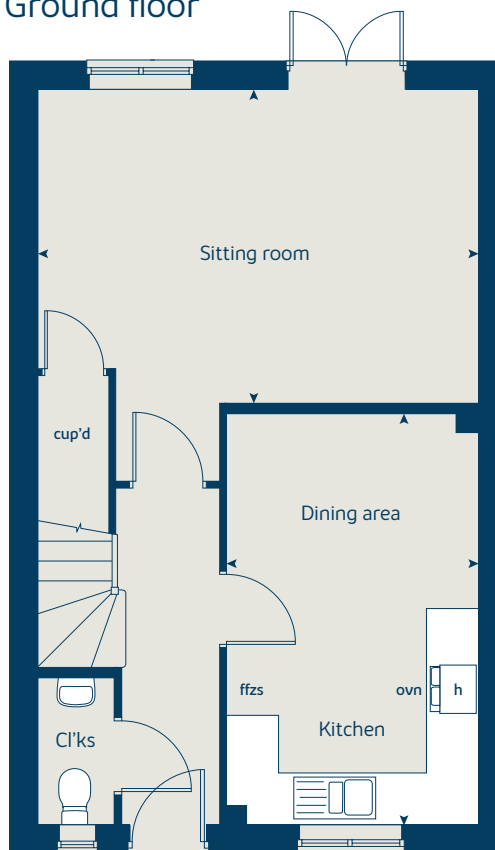
When you have finished with this leaflet please recycle it.

DS13381 / 02.25

### First floor



### Ground floor





# The Ash

3 bedroom home

[bovishomes.co.uk](http://bovishomes.co.uk)

**Bovis  
Homes** 

# The Ash

## 3 bedroom home

Ground floor	metres	feet / inches
Kitchen / dining area	5.59 x 2.94	18' 4" x 9' 6"
Sitting room	5.59 x 3.33	18' 4" x 10' 11"

### First floor

Bedroom 1	3.44 x 3.39	11' 3" x 11' 2"
Bedroom 2	3.34 x 2.94	10' 11" x 9' 6"
Bedroom 3	2.98 x 2.49	9' 7" x 8' 0"

### The Ash | Brimington |

This floorplan has been produced for illustrative purposes only. Room sizes shown are between arrow points as indicated on plan. The dimensions have tolerances of + or -50mm and should not be used other than for general guidance. If specific dimensions are required, enquiries should be made to the sales consultant.

ovn	oven	ffzs	fridge freezer space
h	hob	cup'd	wardrobe
ds	dishwasher space	◀ ▶	measuring points
ws	washing machine space		

Please refer to the sales consultant for specific plot details as the illustrations shown are computer generated impressions of how the property may look so are indicative only. External details or finishes may vary on individual plots and homes may be built in either detached or attached styles depending on the development layout. Exact specifications, window styles and whether a property is left or right handed may differ from plot to plot.

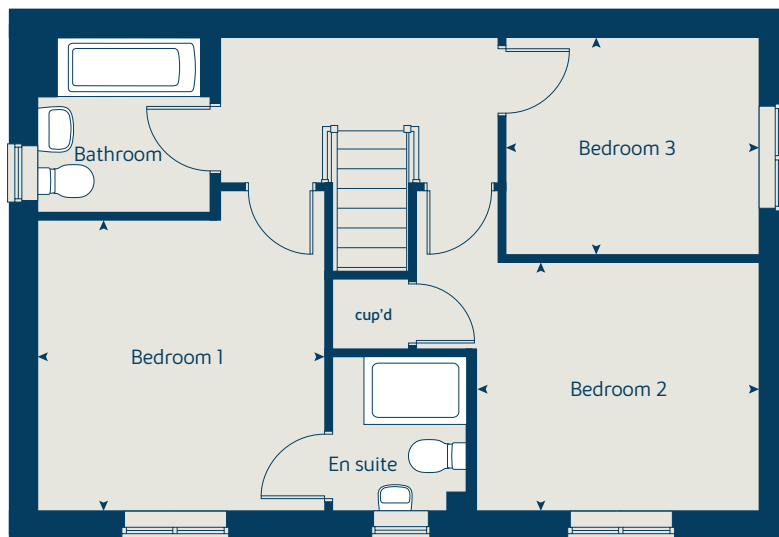
The floorplans shown are not to scale. Measurements are based on the original drawings. Slight variations may occur during construction.

Produced by the Vistry Group Design Studio.

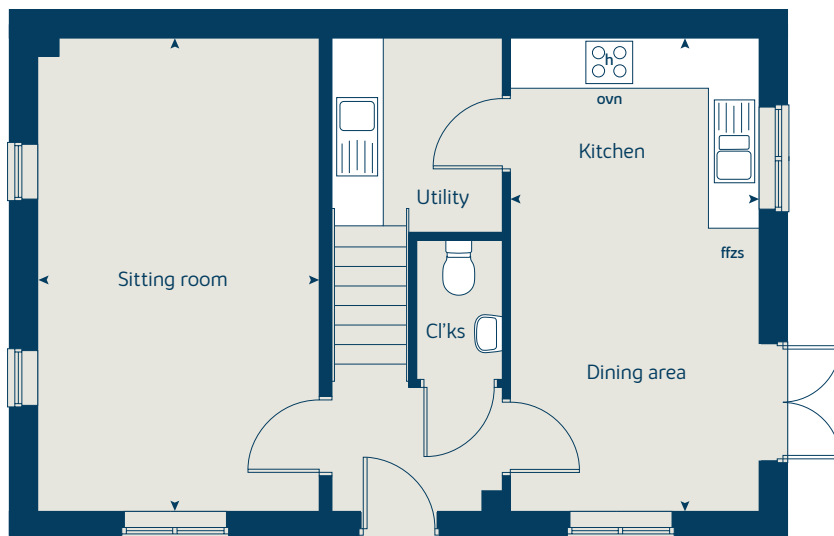
When you have finished with this leaflet please recycle it.

DS13381 / 02.25

### First floor



### Ground floor





# The Juniper

4 bedroom home

[bovishomes.co.uk](http://bovishomes.co.uk)

**Bovis  
Homes** 



# The Juniper

## 4 bedroom home

Ground floor	metres	feet / inches
Kitchen / dining / family area	7.21 x 3.51	23' 7" x 11' 6"
Sitting room	4.55 x 3.04	14' 7" x 10' 0"
Study	2.34 x 1.85	7' 8" x 6' 0"

### First floor

Bedroom 1	2.86 x 3.05	9' 4" x 10' 0"
Bedroom 2	2.97 x 2.84	9' 8" x 9' 3"
Bedroom 3	3.51 x 2.38	11' 6" x 7' 9"
Bedroom 4	3.60 x 2.38	11' 9" x 7' 9"

### The Juniper | X412 01 LBRIM |

This floorplan has been produced for illustrative purposes only. Room sizes shown are between arrow points as indicated on plan. The dimensions have tolerances of + or -50mm and should not be used other than for general guidance. If specific dimensions are required, enquiries should be made to the sales consultant.

\* Windows apply to selected plots only.  
Please see sales consultant for further details.

ovn	oven	ffzr	fridge freezer
h	hob	w	wardrobe
ds	dishwasher space	cup'd	cupboard
ws	washing machine space	< >	measuring points
ldr	larder		

Please refer to the sales consultant for specific plot details as the illustrations shown are computer generated impressions of how the property may look so are indicative only. External details or finishes may vary on individual plots and homes may be built in either detached or attached styles depending on the development layout. Exact specifications, window styles and whether a property is left or right handed may differ from plot to plot.

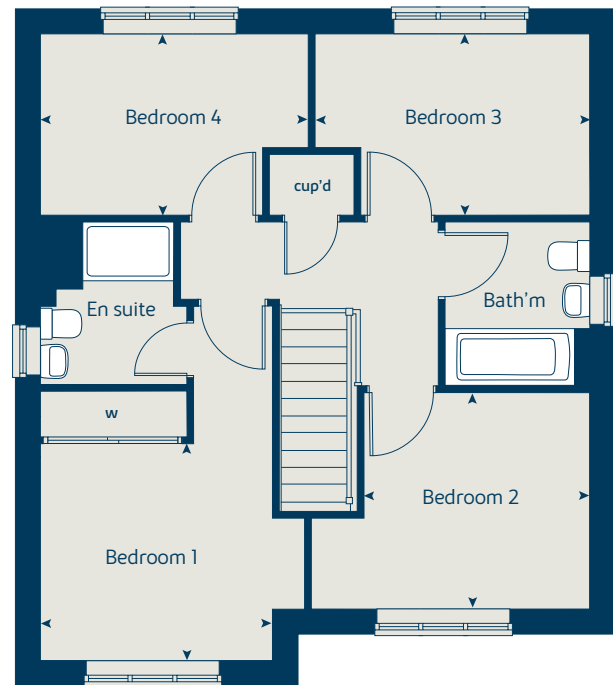
The floorplans shown are not to scale. Measurements are based on the original drawings. Slight variations may occur during construction.

Produced by the Vistry Group Design Studio.

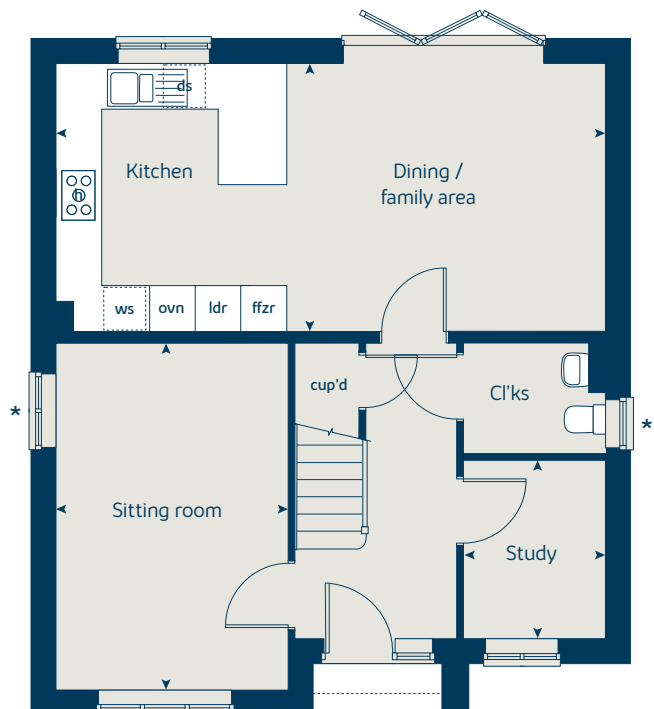
When you have finished with this leaflet please recycle it.

DS13381 / 02.25

## First floor



## Ground floor





# The Chestnut

4 bedroom home

[bovishomes.co.uk](http://bovishomes.co.uk)

**Bovis  
Homes** 

# The Chestnut

## 4 bedroom home

Ground floor	metres	feet / inches
Kitchen	4.03 x 3.04	13' 2" x 9' 11"
Dining / family area	4.59 x 2.85	15' 0" x 9' 4"
Sitting room	4.98 x 3.40	16' 4" x 11' 1"
Study	3.40 x 1.81	11' 1" x 5' 11"

### First floor

Bedroom 1	4.47 x 3.24	14' 8" x 10' 7"
Bedroom 2	3.48 x 3.36	11' 5" x 11' 0"
Bedroom 3	3.42 x 2.34	11' 2" x 7' 8"
Bedroom 4	3.25 x 2.35	10' 7" x 7' 8"

### The Chestnut | X413 01 LBRIM |

This floorplan has been produced for illustrative purposes only. Room sizes shown are between arrow points as indicated on plan. The dimensions have tolerances of + or -50mm and should not be used other than for general guidance. If specific dimensions are required, enquiries should be made to the sales consultant.

\* Windows apply to selected plots only. Please see sales consultant for further details.

ovn	oven	ffzr	fridge freezer
h	hob	w	wardrobe
ds	dishwasher space	cup'd	cupboard
ws	washing machine space	<>	measuring points
ldr	larder		

Please refer to the sales consultant for specific plot details as the illustrations shown are computer generated impressions of how the property may look so are indicative only. External details or finishes may vary on individual plots and homes may be built in either detached or attached styles depending on the development layout. Exact specifications, window styles and whether a property is left or right handed may differ from plot to plot.

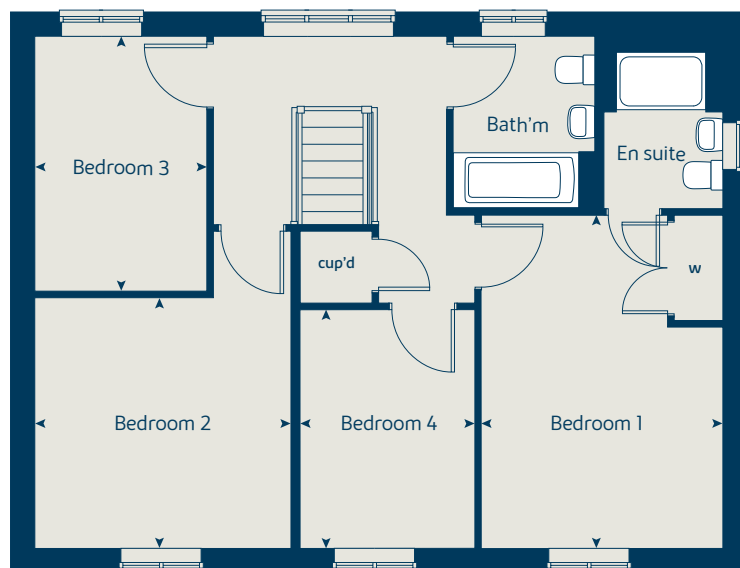
The floorplans shown are not to scale. Measurements are based on the original drawings. Slight variations may occur during construction.

Produced by the Vistry Group Design Studio.

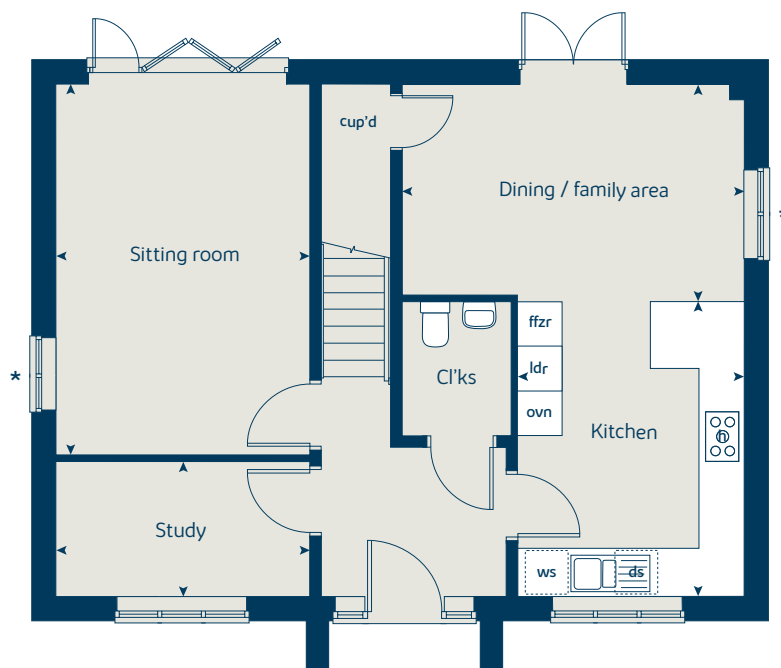
When you have finished with this leaflet please recycle it.

DS13381 / 02.25

## First floor



## Ground floor





# The Aspen

4 bedroom home

[bovishomes.co.uk](http://bovishomes.co.uk)

**Bovis  
Homes** 

# The Aspen

4 bedroom home

Ground floor	metres	feet / inches
Kitchen / dining area	7.77 x 3.37	25' 6" x 11' 0"
Sitting room	5.04 x 3.39	16' 6" x 11' 1"
Study	2.01 x 2.01	6' 7" x 6' 7"

## First floor

Bedroom 1	4.51 x 3.81	14' 10" x 12' 6"
Bedroom 2	3.87 x 3.10	12' 8" x 10' 2"
Bedroom 3	4.07 x 2.45	13' 4" x 8' 0"
Bedroom 4	3.61 x 2.45	11' 10" x 8' 0"

## The Aspen | X414 (IF) 01 LBRIM |

This floorplan has been produced for illustrative purposes only. Room sizes shown are between arrow points as indicated on plan. The dimensions have tolerances of + or -50mm and should not be used other than for general guidance. If specific dimensions are required, enquiries should be made to the sales consultant.

ovn	oven	ldr	larder
h	hob	w	wardrobe
ds	dishwasher space	cup'd	cupboard
ws	washing machine space	◀ ▶	measuring points
ffzr	fridge freezer		

Please refer to the sales consultant for specific plot details as the illustrations shown are computer generated impressions of how the property may look so are indicative only. External details or finishes may vary on individual plots and homes may be built in either detached or attached styles depending on the development layout. Exact specifications, window styles and whether a property is left or right handed may differ from plot to plot.

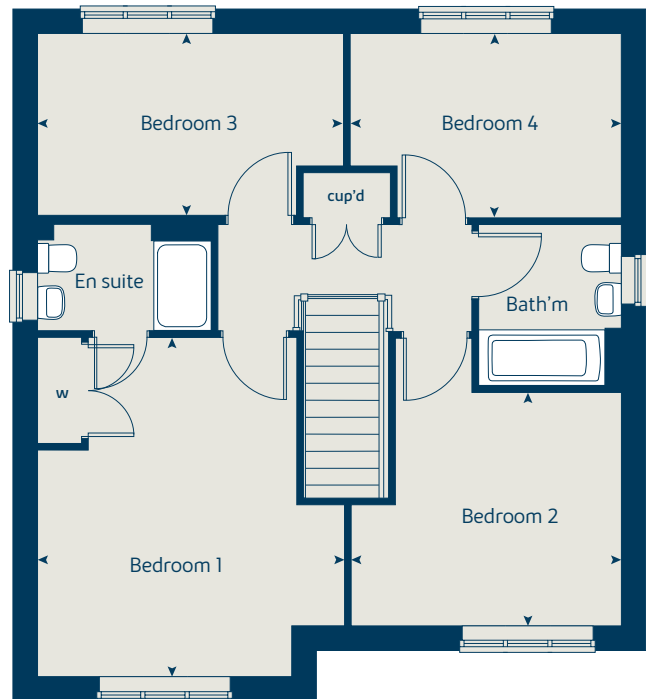
The floorplans shown are not to scale. Measurements are based on the original drawings. Slight variations may occur during construction.

Produced by the Vistry Group Design Studio.

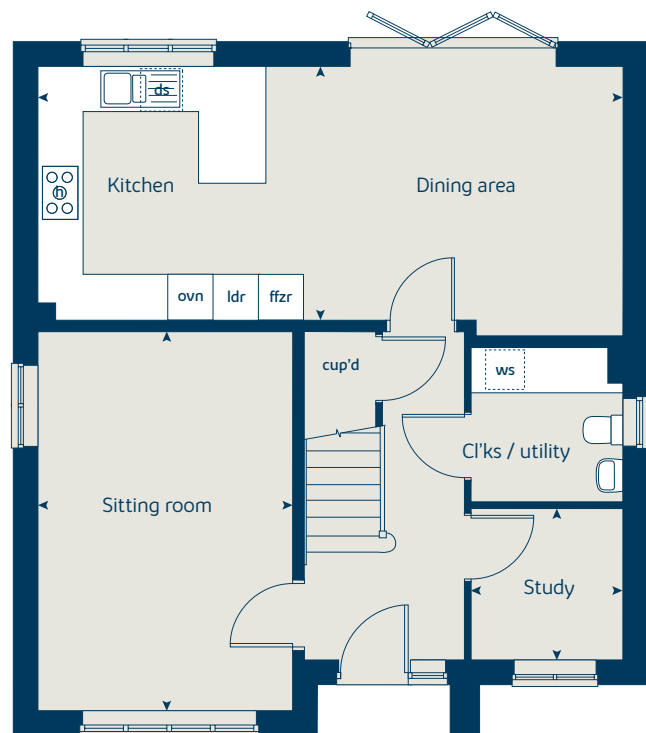
When you have finished with this leaflet please recycle it.

DS13381 / 02.25

## First floor



## Ground floor





# The Alder

4 bedroom home

[bovishomes.co.uk](http://bovishomes.co.uk)

**Bovis  
Homes** 

# The Alder

4 bedroom home

Ground floor	metres	feet / inches
Kitchen	3.53 x 3.24	11' 7" x 10' 6"
Dining / family area	5.26 x 3.24	17' 3" x 10' 6"
Sitting room	4.28 x 3.38	14' 0" x 11' 1"

## First floor

Bedroom 1	3.88 x 3.38	12' 8" x 11' 1"
Bedroom 2	4.34 x 3.03	14' 3" x 9' 11"
Bedroom 3	3.79 x 3.03	12' 5" x 9' 11"
Bedroom 4	3.35 x 3.13	10' 11" x 10' 3"

## The Alder | X415 01 Brimington |

This floorplan has been produced for illustrative purposes only. Room sizes shown are between arrow points as indicated on plan. The dimensions have tolerances of + or -50mm and should not be used other than for general guidance. If specific dimensions are required, enquiries should be made to the sales consultant.

ovn	oven	ldr	larder
h	hob	w	wardrobe
ds	dishwasher space	cup'd	cupboard
ws	washing machine space	cyl	hot water cylinder
ffzr	fridge freezer	◀ ▶	measuring points

Please refer to the sales consultant for specific plot details as the illustrations shown are computer generated impressions of how the property may look so are indicative only. External details or finishes may vary on individual plots and homes may be built in either detached or attached styles depending on the development layout. Exact specifications, window styles and whether a property is left or right handed may differ from plot to plot.

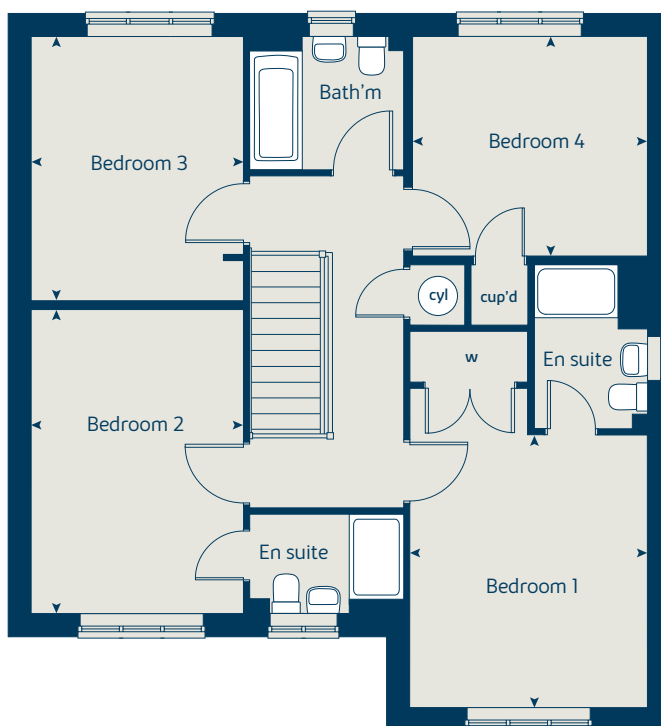
The floorplans shown are not to scale. Measurements are based on the original drawings. Slight variations may occur during construction.

Produced by the Vistry Group Design Studio.

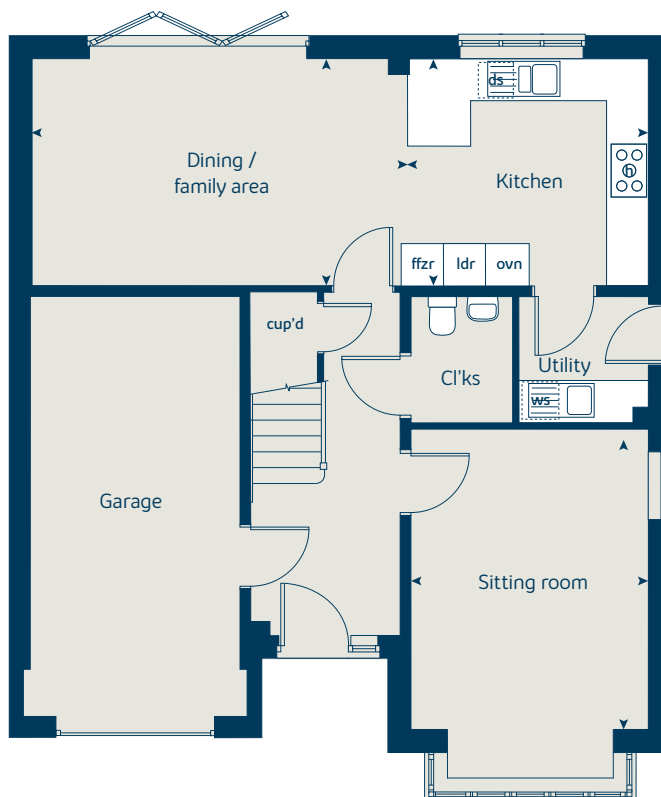
When you have finished with this leaflet please recycle it.

DS13381 / 02.25

## First floor



## Ground floor





# The Birch

5 bedroom home

[bovishomes.co.uk](http://bovishomes.co.uk)





# The Birch

## 5 bedroom home

Ground floor	metres	feet / inches
Kitchen	4.55 x 3.34	14' 11" x 10' 11"
Family / dining area	5.79 x 3.52	19' 0" x 11' 7"
Sitting room	4.30 x 3.61	14' 1" x 11' 10"
Study / dining room	3.41 x 3.00	11' 2" x 9' 10"

First floor	metres	feet / inches
Bedroom 1	3.62 x 3.51	11' 10" x 11' 6"
Bedroom 2	3.92 x 2.90	12' 9" x 9' 6"
Bedroom 3	3.06 x 2.75	10' 0" x 9' 0"
Bedroom 4	3.32 x 2.83	10' 11" x 9' 3"
Bedroom 5	2.83 x 2.70	9' 3" x 8' 10"

### The Birch | XS18 (IF) 01 LBRIM |

This floorplan has been produced for illustrative purposes only. Room sizes shown are between arrow points as indicated on plan. The dimensions have tolerances of + or -50mm and should not be used other than for general guidance. If specific dimensions are required, enquiries should be made to the sales consultant.

ovn	oven	ldr	larder
h	hob	cyl	hot water cylinder
dw	dishwasher	w	wardrobe
ws	washing machine space	cup'd	cupboard
ffzr	fridge freezer	<>	measuring points

Please refer to the sales consultant for specific plot details as the illustrations shown are computer generated impressions of how the property may look so are indicative only. External details or finishes may vary on individual plots and homes may be built in either detached or attached styles depending on the development layout. Exact specifications, window styles and whether a property is left or right handed may differ from plot to plot.

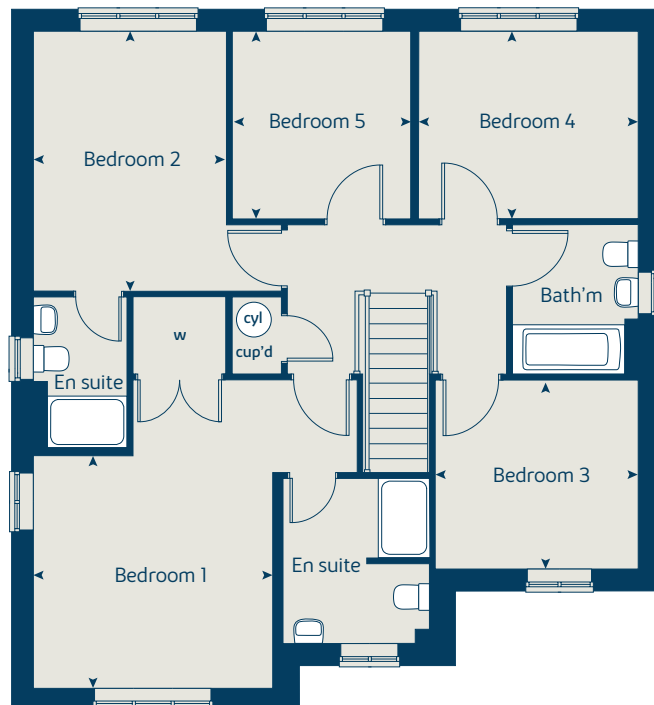
The floorplans shown are not to scale. Measurements are based on the original drawings. Slight variations may occur during construction.

Produced by the Vistry Group Design Studio.

When you have finished with this leaflet please recycle it.

DS13381 / 02.25

### First floor



### Ground floor





# Brimington Heights

Brimington

Specification

[bovishomes.co.uk](http://bovishomes.co.uk)

**Bovis  
Homes** 

# Brimington Heights

## Brimington

Use this guide to see what features are included in your new home. Your sales consultant will be happy to discuss the **Select** range of extras available.



3 bedroom  
The Ash  
The Elm  
4 bedroom  
The Juniper  
The Chestnut  
The Aspen  
The Alder  
5 bedroom  
The Birch

### Kitchen

	3 bedroom The Ash The Elm	4 bedroom The Juniper The Chestnut The Aspen The Alder	5 bedroom The Birch
Choice of standard fitted kitchen (doors & worktops)	■	■	■
Choice of premium fitted kitchen (doors & worktops)			■
Stainless steel sink and drainer (single and a half bowl) with chrome mixer tap	■	■	■
Stainless steel sink and drainer (single bowl) with chrome mixer tap in utility	■		■
Indesit hob (60cm) with built-in single underoven, with stainless steel splashback and curved glass chimney hood	■	■	■
Hotpoint hob (75 cm) with built-in double high level oven, with glass splashback and curved glass chimney hood		■	■
Bosch (75cm) hob with built-in double high level oven, with glass splashback and stainless steel pyramid chimney hood			■
Pendant light fitting	■	■	■
LED under unit-flexible strip lighting			■
Fridge / freezer space	■	■	■
Indesit Integrated 50 / 50 fridge freezer		■	■
Space for integrated dishwasher with plumbing and electrics	■	■	■
Indesit Integrated dishwasher			■
Space for washing machine with plumbing and electrics in kitchen		■	■
Space for washing machine with plumbing and electrics in utility	■		■

### Bathrooms and en suite(s)

	3 bedroom The Ash The Elm	4 bedroom The Juniper The Chestnut The Aspen The Alder	5 bedroom The Birch
Ideal Standard contemporary white Concept Air sanitaryware	■	■	■
Ideal Standard close coupled WC to cloakroom	■	■	■
Handheld hair wash attachment	■	■	■
Ideal Standard low profile shower tray with glass enclosure to bedroom 1 en suite	■	■	■
Second shower ensuite to selected bedrooms			■
Choice of standard Porcelanosa wall tiling (splashback, 600mm over bath, and full-height to shower cubicle)*	■	■	■
Choice of standard Porcelanosa wall tiling (half-height to walls with fitted sanitary ware, half-height over bath, and full-height to shower cubicle)*			■
Chrome bezel LED bulkhead to bathroom and en suite(s)	■	■	■
Chrome towel warmer in bathroom and en suite(s)		■	■
Water waste heat recovery system**	■	■	■

■ Fitted as standard - included in the property  
\* Subject to stage of construction  
\*\* Applicable to selected plots only. Please see sales consultant for further details.

### Doors and Windows

	3 bedroom The Ash The Elm	4 bedroom The Juniper The Chestnut The Aspen The Alder	5 bedroom The Birch
Front door with multi-point security locking system and security chain	■	■	■
Chrome plated front door numerals	■	■	■
PVCu double glazing to windows	■	■	■
Double glazed PVCu French doors	■	■	■
Powder coated aluminium double glazed bi-fold doors		■	■
Internal Cottage style pre-primed doors with Brass Satin finish handles	■	■	■
Paving from front of property to rear and paved area to rear French bi-fold doors - please refer to drawings for exact positions	■	■	■

### General

	3 bedroom The Ash The Elm	4 bedroom The Juniper The Chestnut The Aspen The Alder	5 bedroom The Birch
PV solar panels**	■	■	■
White painted walls and smooth white ceilings	■	■	■
Combined usb/double sockets in kitchen and bedroom 1	■	■	■
Multi-media point in living room	■	■	■
TV point to bedroom 1 and family room (where applicable)	■	■	■
Master telephone socket to lounge, under-stairs cupboard or study (where applicable)	■	■	■
Gas central heating with wall mounted combi-boiler, programme selector and room thermostat(s)	■	■	■
Gas central heating with wall mounted boiler and separate hot water cylinder, programme selector and room thermostat(s)			■
Thermostatic valves to all radiators (with the exception of rooms with separate thermostat control)	■	■	■
Fitted external tap	■	■	■
External light fitted to front porch and wiring for external light to rear door	■	■	■
Mains wired smoke detectors with battery back-up	■	■	■
Battery powered Carbon Monoxide detector (wall mounted) supplied next to the boiler	■	■	■
Power and lighting to 'on plot' garage (where applicable)	■	■	■
Enclosed fenced rear garden, and garden gate (where applicable).	■	■	■
Landscaped front gardens	■	■	■
NHBC Buildmark cover	■	■	■
First two years' customer service support from Bovis Homes	■	■	■

## So much choice...

Part of the excitement of buying a new home is the thrill of being the first person to live in the property and having a brand new contemporary kitchen and modern bathroom. Our premium brand partners ensure that all of our fixtures and fittings comply with the latest Government building regulations and only branded appliances are installed in your new home.

Once you know what specification comes included, you'll have a choice from our specially selected tiles for your kitchen and bathrooms, as well as kitchen worktops and cupboard doors. You can then use the Bovis Homes **Select** brochure to add the finishing touches to your home to make it extra special for you!

From personalising your bathrooms with stunning ceramics, or adding smooth sliding wardrobes to your master bedroom, there are a wide range of additional options and upgrades available.

The availability of items is subject to the stage of build, and can vary by development and house type. Our sales consultants will be happy to provide guidance.



The specification shown in this leaflet is correct at the time of going to press. Bovis Homes is continually reviewing and updating the specification on all housetypes and therefore reserves the right to change specification details. Photographs depict a typical Bovis Homes interior and may include optional upgrades. For full details regarding current specification and finishes, for the plots you are interested in, please refer to our sales consultant.

Produced by the Vistry Group Design Studio.

When you have finished with this leaflet please recycle it.

Part L specification LBRIM DS13381 / 02.25

**Bovis  
Homes** 