



# Whiteley Meadows

North Whiteley

Development plan

[bovishomes.co.uk](http://bovishomes.co.uk)

**Bovis  
Homes** 

# Whiteley Meadows

North Whiteley

## 2 bedroom home

 The Rosemary

## 3 bedroom homes

 The Majoram


 The Caraway

 The Basil

 The Thyme

 The Sage

## 4 bedroom homes

 The Sorrel

 The Lovage

 The Fennel

## 5 bedroom home

 The Bay

## Pre-sold homes

 2 bedroom homes

 3 bedroom homes

 4 bedroom homes



Future  
Bovis Homes  
development

This plan has been produced for home identification purposes only and is not to scale. The development layout, landscaping and tenure of all dwellings may be subject to change throughout the course of the development. Finishes and materials may vary from those shown on the plan. Please check the details of your chosen plot and house type with the sales consultant. Development layout plan correct at time of production.

**Vistry Southern region**

Central 40, Lime Tree Way, Chineham Park, Basingstoke RG24 8GU. Telephone: 01483 705 100

Produced by the Vistry Group Design Studio.

When you have finished with this leaflet please recycle it.

125-SZ541 DS11764 / 11.24





# The Rosemary

2 bedroom home

- Low energy lighting and ventilation systems
- Electric vehicle charging point
- Photovoltaic (PV) solar panels

[bovishomes.co.uk](http://bovishomes.co.uk)

**Bovis  
Homes** 

# The Rosemary

## 2 bedroom home

Ground floor	metres	feet / inches
Kitchen	3.59 x 2.60	11' 9" x 8' 6"
Sitting / dining area	4.56 x 4.20	14' 11" x 13' 9"

### First floor

Bedroom 1	4.20 x 3.51	13' 9" x 11' 6"
Bedroom 2	4.20 x 3.61	13' 9" x 11' 10"

ovn	oven	ffzs	fridge freezer space
h	hob	w	wardrobe
ds	dishwasher space	cup'd	cupboard
ws	washing machine space	< >	measuring points

### The Rosemary | Whiteley Meadows |

The floorplan has been produced for illustrative purposes only. Room sizes shown are between arrow points as indicated on plan. The dimensions have tolerances of + or -50mm and should not be used other than for general guidance. If specific dimensions are required, enquiries should be made to the sales consultant. The floor plans shown are not to scale. Measurements are based on the original drawings. Slight variations may occur during construction.

The illustrations shown are computer generated impressions of how the property may look and are indicative only. External details or finishes may vary on individual plots and homes may be built in either detached or attached styles depending on the development layout. Exact specifications, window styles and whether a property is left or right handed may differ from plot to plot. Please speak to our sales consultant for specific plot details.

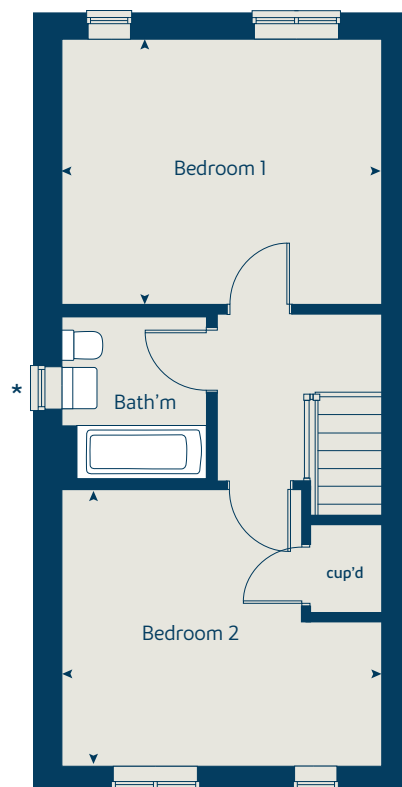
\* Windows apply to selected plots only. Please speak to our sales consultant for further details.

Produced by the Vistry Group Design Studio.

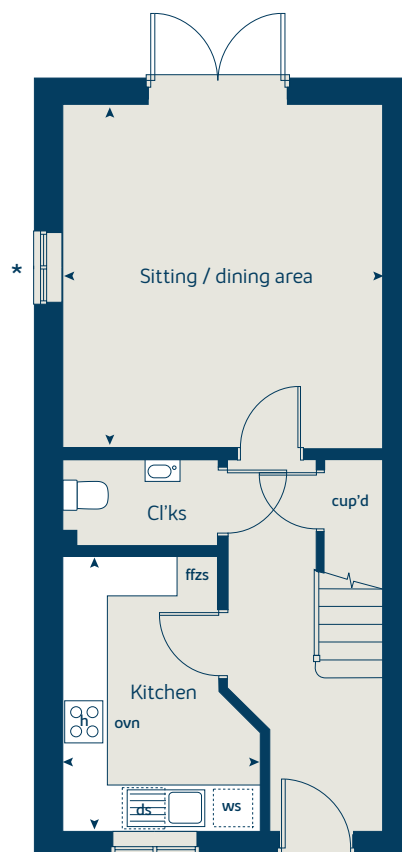
When you have finished with this leaflet please recycle it.

125-SZ541 DS11764 / 11.24

### First floor



### Ground floor





# The Basil

3 bedroom home

- Low energy lighting and ventilation systems
- Electric vehicle charging point
- Photovoltaic (PV) solar panels

[bovishomes.co.uk](http://bovishomes.co.uk)

**Bovis  
Homes** 

# The Basil

## 3 bedroom home

Ground floor	metres	feet / inches
Kitchen / dining area	5.82 x 4.30	19' 1" x 14' 1"
Sitting room	4.89 x 3.48	16' 0" x 11' 5"

### First floor

Bedroom 1	3.67 x 3.55	12' 0" x 11' 7"
Bedroom 2	3.56 x 3.40	11' 8" x 11' 1"
Bedroom 3	3.37 x 2.18	11' 0" x 7' 1"

ovn	oven	ffzs	fridge freezer space
h	hob	cup'd	cupboard
ds	dishwasher space	◀ ▶	measuring points
ws	washing machine space		

### The Basil | Whiteley Meadows |

The floorplan has been produced for illustrative purposes only. Room sizes shown are between arrow points as indicated on plan. The dimensions have tolerances of + or -50mm and should not be used other than for general guidance. If specific dimensions are required, enquiries should be made to the sales consultant. The floor plans shown are not to scale. Measurements are based on the original drawings. Slight variations may occur during construction.

The illustrations shown are computer generated impressions of how the property may look and are indicative only. External details or finishes may vary on individual plots and homes may be built in either detached or attached styles depending on the development layout. Exact specifications, window styles and whether a property is left or right handed may differ from plot to plot. Please speak to our sales consultant for specific plot details.

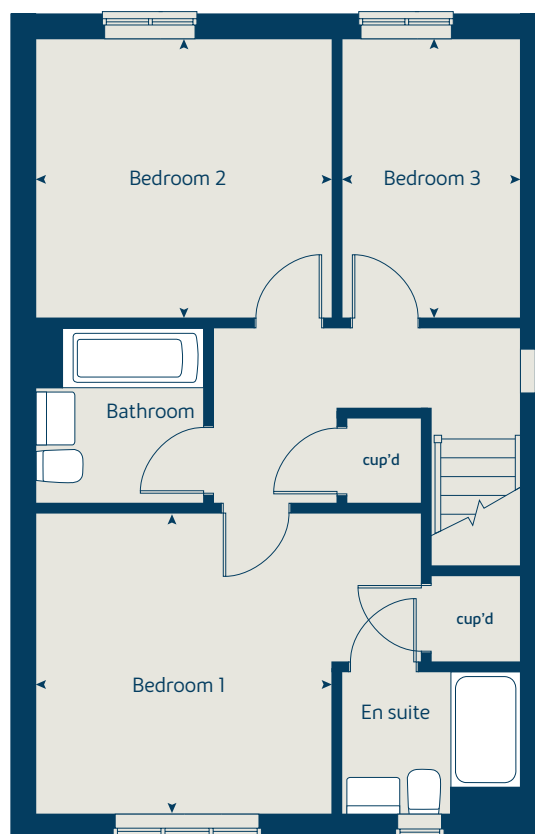
\* Window applies to plot 681 only. Please speak to our sales consultant for further details.

Produced by the Vistry Group Design Studio.

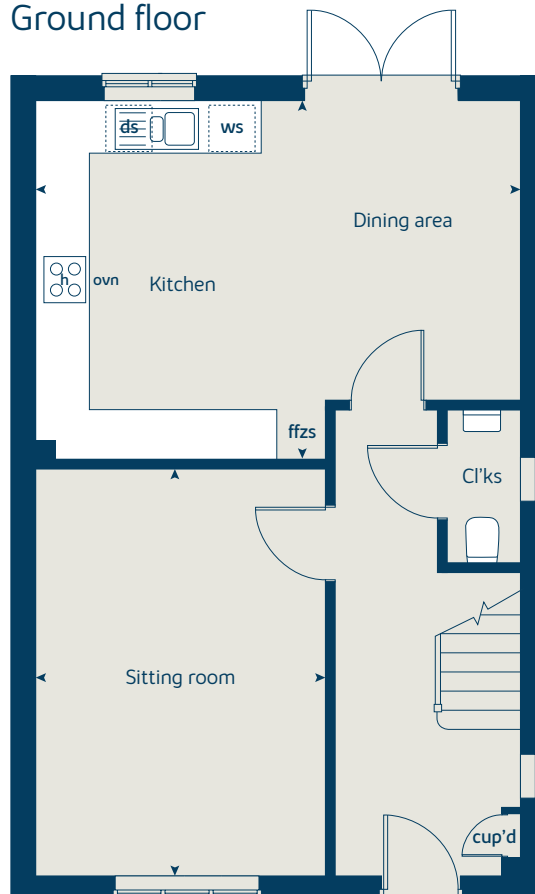
When you have finished with this leaflet please recycle it.

125-SZ541 DS11764 / 11.24

### First floor



### Ground floor





# The Thyme

3 bedroom home

- Low energy lighting and ventilation systems
- Electric vehicle charging point
- Photovoltaic (PV) solar panels

[bovishomes.co.uk](http://bovishomes.co.uk)

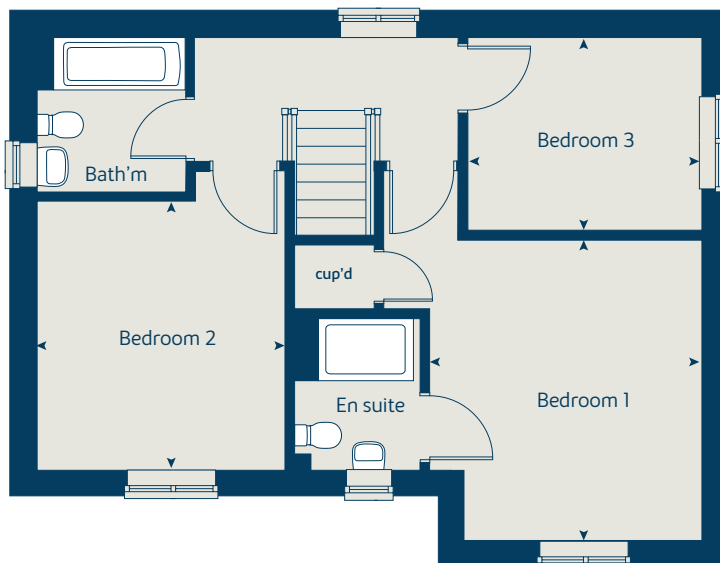
**Bovis  
Homes** 



# The Thyme

3 bedroom home

## First floor



Ground floor	metres	feet / inches
Kitchen / dining area	6.43 x 2.99	21' 1" x 9' 9"
Sitting room	5.53 x 3.08	18' 1" x 10' 1"

### First floor

Bedroom 1	3.83 x 3.50	21' 6" x 11' 5"
Bedroom 2	3.49 x 3.15	11' 5" x 10' 4"
Bedroom 3	3.01 x 2.52	9' 10" x 8' 3"

ovn	oven	ffzs	fridge freezer space
h	hob	cup'd	cupboard
ds	dishwasher space	< >	measuring points
ws	washing machine space		

### The Thyme | Whiteley Meadows |

The floorplan has been produced for illustrative purposes only. Room sizes shown are between arrow points as indicated on plan. The dimensions have tolerances of + or -50mm and should not be used other than for general guidance. If specific dimensions are required, enquiries should be made to the sales consultant. The floor plans shown are not to scale. Measurements are based on the original drawings. Slight variations may occur during construction.

The illustrations shown are computer generated impressions of how the property may look and are indicative only. External details or finishes may vary on individual plots and homes may be built in either detached or attached styles depending on the development layout. Exact specifications, window styles and whether a property is left or right handed may differ from plot to plot. Please speak to our sales consultant for specific plot details.

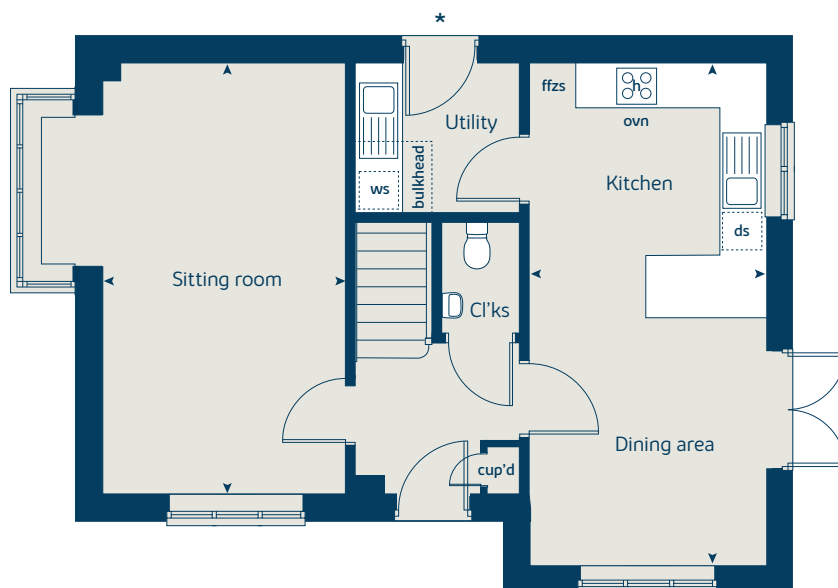
\* Door applies to selected plots only. Please speak to our sales consultant for further details.

Produced by the Vistry Group Design Studio.

When you have finished with this leaflet please recycle it.

125-SZ541 DS11764 / 11.24

## Ground floor





# The Marjoram

3 bedroom home

- Low energy lighting and ventilation systems
- Electric vehicle charging point
- Photovoltaic (PV) solar panels

[bovishomes.co.uk](http://bovishomes.co.uk)

**Bovis  
Homes** 

# The Marjoram

## 3 bedroom home

Ground floor	metres	feet / inches
Kitchen / dining area	4.78 x 2.79	15' 8" x 9' 1"
Sitting room	4.98 x 3.21	16' 4" x 10' 6"

### First floor

Bedroom 1	4.46 x 2.78	14' 7" x 9' 1"
Bedroom 2	3.52 x 2.78	11' 6" x 9' 1"
Bedroom 3	3.21 x 2.12	10' 6" x 6' 11"

ovn	oven	ffzs	fridge freezer space
h	hob	cup'd	cupboard
ds	dishwasher space	< >	measuring points
ws	washing machine space		

### The Marjoram | Whiteley Meadows |

The floorplan has been produced for illustrative purposes only. Room sizes shown are between arrow points as indicated on plan. The dimensions have tolerances of + or -50mm and should not be used other than for general guidance. If specific dimensions are required, enquiries should be made to the sales consultant. The floor plans shown are not to scale. Measurements are based on the original drawings. Slight variations may occur during construction.

The illustrations shown are computer generated impressions of how the property may look and are indicative only. External details or finishes may vary on individual plots and homes may be built in either detached or attached styles depending on the development layout. Exact specifications, window styles and whether a property is left or right handed may differ from plot to plot. Please speak to our sales consultant for specific plot details.

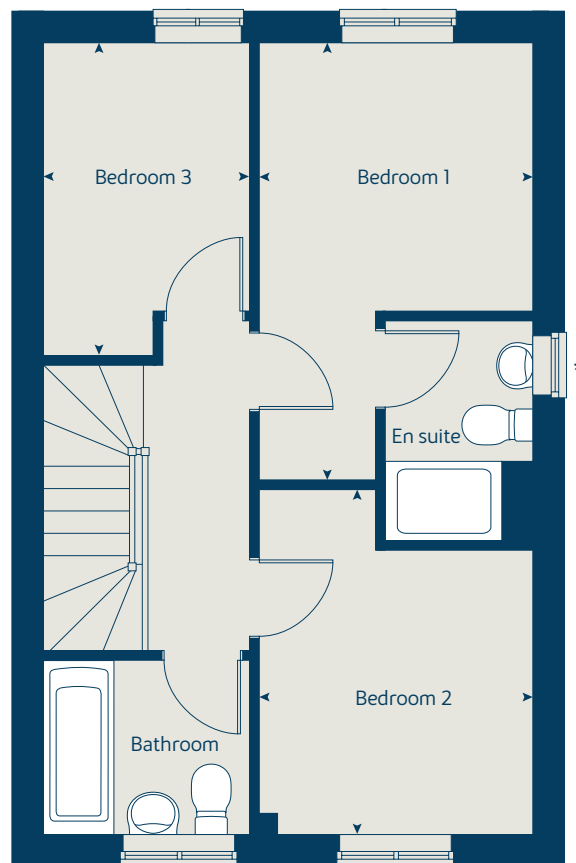
\* Window applies to selected plots only. Please speak to our sales consultant for further details.

Produced by the Vistry Group Design Studio.

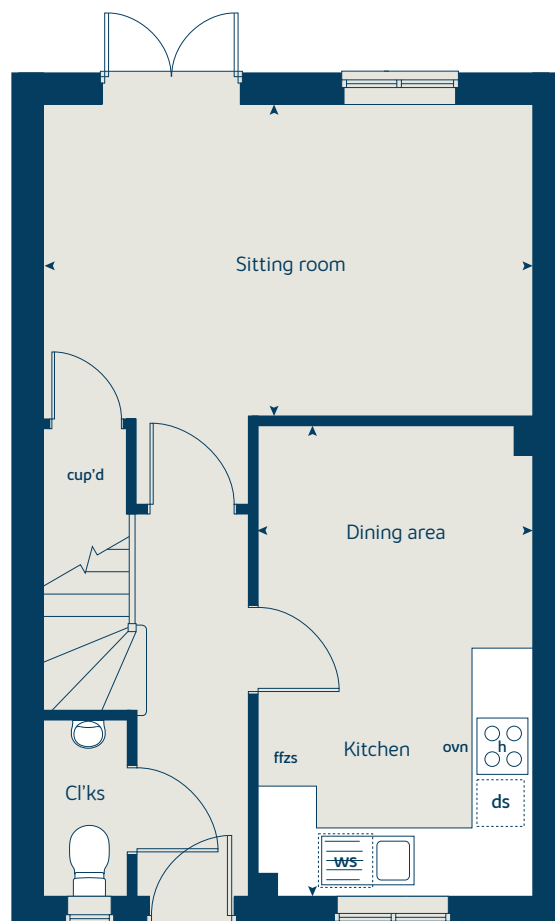
When you have finished with this leaflet please recycle it.

125-S2541 DS11764 / 11.24

### First floor



### Ground floor





# The Sage

3 bedroom home

- Low energy lighting and ventilation systems
- Electric vehicle charging point
- Photovoltaic (PV) solar panels

[bovishomes.co.uk](http://bovishomes.co.uk)

**Bovis  
Homes** 

# The Sage

3 bedroom home

Ground floor	metres	feet / inches
Kitchen / dining room	5.74 x 3.22	18' 9" x 10' 6"
Snug	3.16 x 2.93	10' 4" x 9' 7"
Sitting room	4.96 x 3.15	16' 3" x 10' 4"

## First floor

Bedroom 1	4.44 x 3.30	14' 6" x 10' 9"
Bedroom 2	4.96 x 2.93	16' 3" x 9' 7"
Bedroom 3	3.23 x 2.71	10' 7" x 8' 10"

ovn	oven	ffzs	fridge freezer space
h	hob	cup'd	cupboard
ds	dishwasher space	< >	measuring points
ws	washing machine space		

## The Sage | Whiteley Meadows |

The floorplan has been produced for illustrative purposes only. Room sizes shown are between arrow points as indicated on plan. The dimensions have tolerances of + or -50mm and should not be used other than for general guidance. If specific dimensions are required, enquiries should be made to the sales consultant. The floor plans shown are not to scale. Measurements are based on the original drawings. Slight variations may occur during construction.

The illustrations shown are computer generated impressions of how the property may look and are indicative only. External details or finishes may vary on individual plots and homes may be built in either detached or attached styles depending on the development layout. Exact specifications, window styles and whether a property is left or right handed may differ from plot to plot. Please speak to our sales consultant for specific plot details.

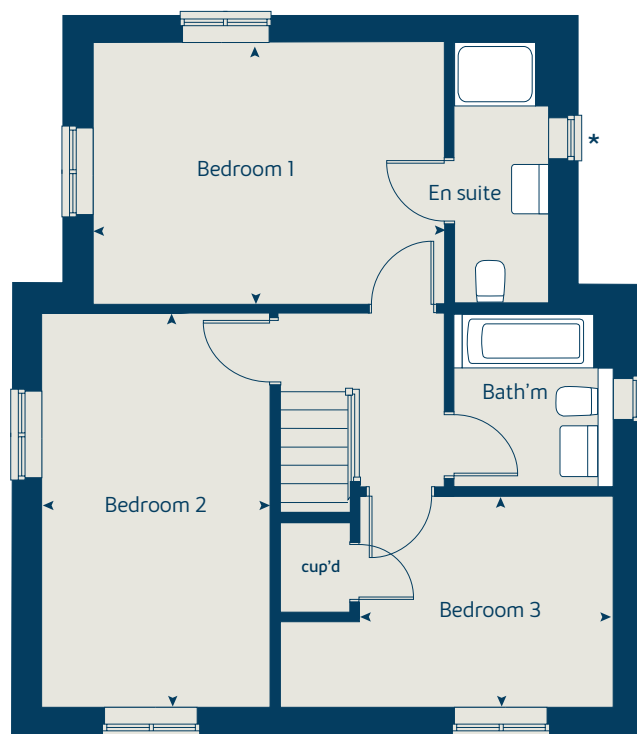
\* Windows apply to selected plots only. Please speak to our sales consultant for further details.

Produced by the Vistry Group Design Studio.

When you have finished with this leaflet please recycle it.

125-SZ541 DS11764 / 11.24

## First floor



## Ground floor





# The Fennel

4 bedroom home

- Low energy lighting and ventilation systems
- Electric vehicle charging point
- Photovoltaic (PV) solar panels

[bovishomes.co.uk](http://bovishomes.co.uk)

**Bovis  
Homes** 

# The Fennel

4 bedroom home

Ground floor	metres	feet / inches
Kitchen	4.28 x 2.81	14' 0" x 9' 2"
Dining area	4.11 x 3.08	15' 5" x 10' 1"
Sitting room	5.86 x 3.09	19' 2" x 10' 1"

## First floor

Bedroom 1	4.31 x 3.15	14' 1" x 10' 4"
Bedroom 2	4.28 x 2.73	14' 0" x 8' 11"
Bedroom 3	3.03 x 3.01	9' 11" x 9' 10"
Bedroom 4	3.01 x 2.75	9' 10" x 9' 0"

ovn	oven	ffzs	fridge freezer space
h	hob	w	wardrobe
ds	dishwasher space	cup'd	cupboard
ws	washing machine space	< >	measuring points

## The Fennel | 125-SZ541 |

The floorplan has been produced for illustrative purposes only. Room sizes shown are between arrow points as indicated on plan. The dimensions have tolerances of + or -50mm and should not be used other than for general guidance. If specific dimensions are required, enquiries should be made to the sales consultant. The floor plans shown are not to scale. Measurements are based on the original drawings. Slight variations may occur during construction.

The illustrations shown are computer generated impressions of how the property may look and are indicative only. External details or finishes may vary on individual plots and homes may be built in either detached or attached styles depending on the development layout. Exact specifications, window styles and whether a property is left or right handed may differ from plot to plot. Please speak to our sales consultant for specific plot details.

Produced by the Vistry Group Design Studio.

When you have finished with this leaflet please recycle it.

125-SZ541 DSI1764 / 11.24

## First floor



## Ground floor





# The Sorrel

4 bedroom home

- Low energy lighting and ventilation systems
- Electric vehicle charging point
- Photovoltaic (PV) solar panels

[bovishomes.co.uk](http://bovishomes.co.uk)

**Bovis  
Homes** 



# The Sorrel

4 bedroom home

Ground floor	metres	feet / inches
Kitchen / dining area	6.03 x 4.14	19' 9" x 13' 6"
Sitting room	4.89 x 3.31	16' 0" x 10' 10"

## First floor

Bedroom 1	3.66 x 2.81	12' 0" x 9' 2"
Bedroom 2	3.87 x 2.48	12' 8" x 8' 1"
Bedroom 3	3.47 x 2.77	11' 4" x 9' 1"
Bedroom 4	3.14 x 1.93	10' 3" x 6' 3"

ovn	oven	ffzs	fridge freezer space
h	hob	cup'd	cupboard
ds	dishwasher space	◀ ▶	measuring points
ws	washing machine space		

## The Sorrel | Whiteley Meadows |

The floorplan has been produced for illustrative purposes only. Room sizes shown are between arrow points as indicated on plan. The dimensions have tolerances of + or -50mm and should not be used other than for general guidance. If specific dimensions are required, enquiries should be made to the sales consultant. The floor plans shown are not to scale. Measurements are based on the original drawings. Slight variations may occur during construction.

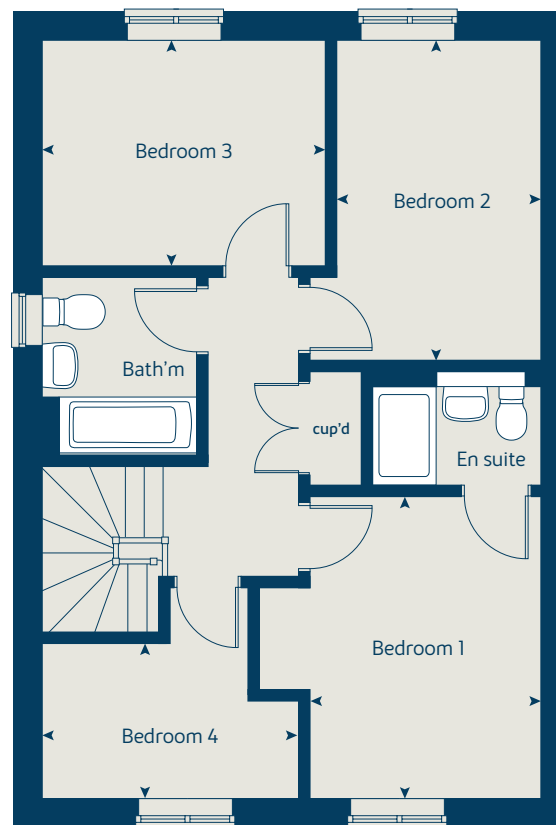
The illustrations shown are computer generated impressions of how the property may look and are indicative only. External details or finishes may vary on individual plots and homes may be built in either detached or attached styles depending on the development layout. Exact specifications, window styles and whether a property is left or right handed may differ from plot to plot. Please speak to our sales consultant for specific plot details.

Produced by the Vistry Group Design Studio.

When you have finished with this leaflet please recycle it.

125-SZ541 DS11764 / 11.24

## First floor



## Ground floor





# The Lovage

4 bedroom home

- Low energy lighting and ventilation systems
- Electric vehicle charging point
- Photovoltaic (PV) solar panels

[bovishomes.co.uk](http://bovishomes.co.uk)

**Bovis  
Homes** 

# The Lovage

4 bedroom home

Ground floor	metres	feet / inches
Kitchen	3.72 x 3.38	12' 2" x 11' 1"
Dining area	4.38 x 3.39	14' 4" x 11' 1"
Sitting room	4.22 x 3.49	13' 10" x 11' 5"
Study	2.39 x 2.39	7' 10" x 7' 10"

## First floor

Bedroom 1	4.28 x 3.36	14' 0" x 11' 0"
Bedroom 2	3.71 x 3.56	12' 2" x 11' 8"
Bedroom 3	3.41 x 2.93	11' 2" x 9' 7"
Bedroom 4	3.98 x 2.88	13' 0" x 9' 5"

ovn	oven	ffzs	fridge freezer space
h	hob	w	wardrobe
ds	dishwasher space	cup'd	cupboard
ws	washing machine space	< >	measuring points

### The Lovage | Whiteley Meadows |

The floorplan has been produced for illustrative purposes only. Room sizes shown are between arrow points as indicated on plan. The dimensions have tolerances of + or -50mm and should not be used other than for general guidance. If specific dimensions are required, enquiries should be made to the sales consultant. The floor plans shown are not to scale. Measurements are based on the original drawings. Slight variations may occur during construction.

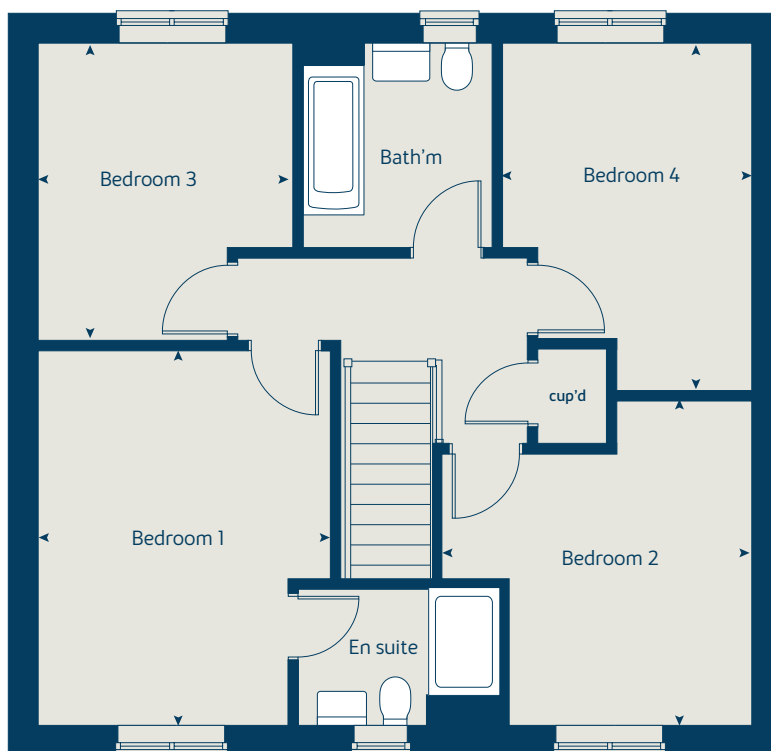
The illustrations shown are computer generated impressions of how the property may look and are indicative only. External details or finishes may vary on individual plots and homes may be built in either detached or attached styles depending on the development layout. Exact specifications, window styles and whether a property is left or right handed may differ from plot to plot. Please speak to our sales consultant for specific plot details.

Produced by the Vistry Group Design Studio.

When you have finished with this leaflet please recycle it.

125-SZ541 DS11764 / 11.24

## First floor



## Ground floor





# The Bay

5 bedroom home

- Low energy lighting and ventilation systems
- Electric vehicle charging point
- Photovoltaic (PV) solar panels

[bovishomes.co.uk](http://bovishomes.co.uk)

**Bovis  
Homes** 

# The Bay

## 5 bedroom home

Ground floor	metres	feet / inches
Kitchen / dining area	4.93 x 4.35	16' 2" x 14' 3"
Family area	3.64 x 3.36	11' 11" x 11' 0"
Sitting room	4.83 x 3.72	15' 10" x 12' 2"
Study	2.41 x 2.35	7' 10" x 7' 8"

First floor	metres	feet / inches
Bedroom 1	3.52 x 3.41	11' 6" x 11' 2"
Bedroom 4	3.52 x 3.05	11' 6" x 10' 0"
Bedroom 5	3.44 x 2.68	11' 3" x 8' 9"

Second floor	metres	feet / inches
Bedroom 2	4.56 x 3.72	14' 11" x 12' 2"
Bedroom 3	4.56 x 3.41	14' 11" x 11' 2"

ovn	oven	ffzs	fridge freezer space
h	hob	w	wardrobe
ds	dishwasher space	cup'd	cupboard
ws	washing machine space	<>	measuring points
cyl	hot water cylinder		

### The Bay | Whiteley Meadows |

The floorplan has been produced for illustrative purposes only. Room sizes shown are between arrow points as indicated on plan. The dimensions have tolerances of + or -50mm and should not be used other than for general guidance. If specific dimensions are required, enquiries should be made to the sales consultant. The floor plans shown are not to scale. Measurements are based on the original drawings. Slight variations may occur during construction.

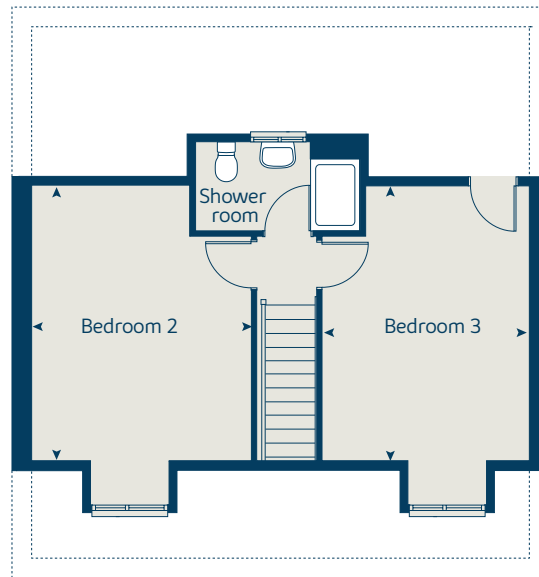
The illustrations shown are computer generated impressions of how the property may look and are indicative only. External details or finishes may vary on individual plots and homes may be built in either detached or attached styles depending on the development layout. Exact specifications, window styles and whether a property is left or right handed may differ from plot to plot. Please speak to our sales consultant for specific plot details.

Produced by the Vistry Group Design Studio.

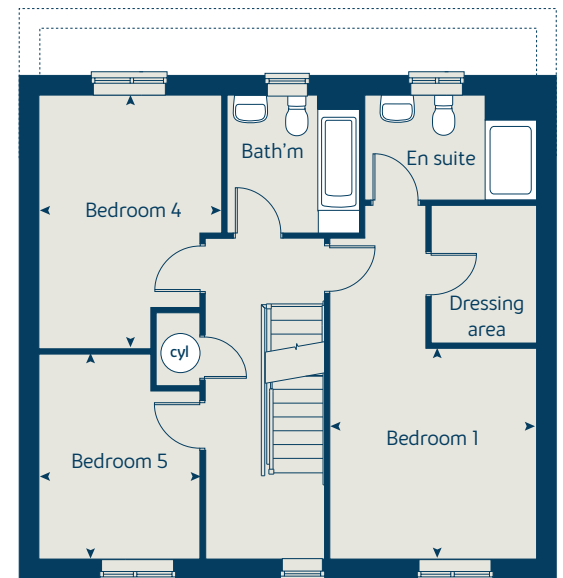
When you have finished with this leaflet please recycle it.

125-SZ541 DS11764 / 11.24

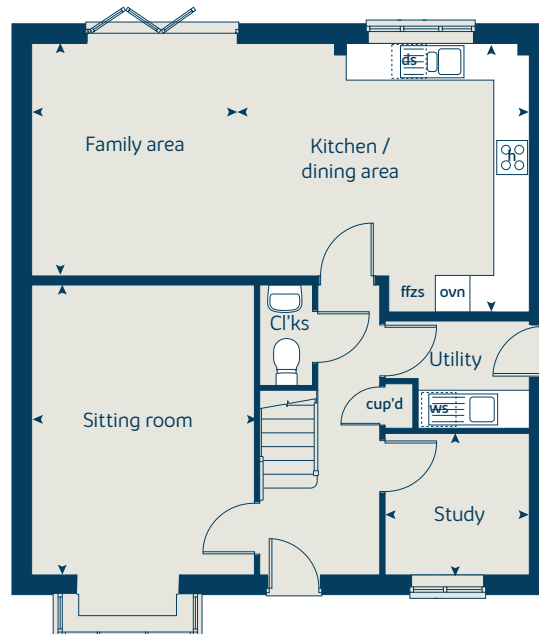
### Second floor



### First floor



### Ground floor





# Whiteley Meadows

North Whiteley

Specification

[bovishomes.co.uk](http://bovishomes.co.uk)

**Bovis  
Homes** 

# Whiteley Meadows

## North Whiteley

Use this guide to see what features are included in your new home. Your sales consultant will be happy to discuss the **Select** range of extras available.



### Kitchen

	2 bedroom The Rosemary The Chive The Chervil	3 bedroom The Basil The Thyme The Thyme II The Marjoram The Sage The Carraway The Tarragon	4 bedroom The Fennel The Sorrel The Lovage	5 bedroom The Bay
Choice of Standard fitted kitchen (doors & worktops)	■	■	■	■
Choice of Premium fitted kitchen (doors & worktops)				■
Stainless steel sink and drainer (single bowl) with chrome mixer tap	■	■	■	■
Stainless steel sink and drainer (single and a half bowl) with chrome mixer tap		■	■	■
Stainless steel sink and drainer (single bowl) with chrome mixer tap in utility		■	■	■
Indesit hob (60cm) with built-in single underoven, with stainless steel splashback and curved glass chimney hood	■	■	■	■
Hotpoint hob (75 cm) with built-in double high level oven, with glass splashback and curved glass chimney hood			■	■
Bosch (75cm) hob with built-in double high level oven, with glass splashback and stainless steel pyramid chimney hood				■
Pendant light fitting	■	■	■	■
LED under-unit flexible strip lighting				■
Fridge / freezer space	■	■	■	■
Indesit Integrated 50 / 50 fridge freezer			■	■
Space for integrated dishwasher with plumbing and electrics	■	■	■	■
Indesit Integrated dishwasher				■
Space for washing machine with plumbing and electrics	■	■	■	■

### Bathrooms and en suite(s)

Ideal Standard contemporary white I. Life sanitaryware	■	■	■	■
Ideal Standard close coupled WC to cloakroom	■	■	■	■
Handheld hair wash attachment		■	■	■
Shower over the bath (full height tiling to length and side of bath)	■	■	■	■
Ideal Standard low profile shower tray with glass enclosure to bedroom 1 en suite		■	■	■
Ideal Standard low profile shower tray with glass enclosure to family bathroom			■	
Shower room to second floor				■
Choice of standard Porcelanosa wall tiling (splashback, 450mm over bath, and full-height to shower cubicle)*	■	■	■	■
Choice of standard Porcelanosa wall tiling (half-height to walls with fitted sanitary ware, half-height over bath, and full-height to shower cubicle)*				■
Chrome bezel LED bulkhead to bathroom and en suite(s) where applicable	■	■	■	■
Chrome towel warmer in bathroom and en suite(s) and shower room where applicable			■	■
Water waste heat recovery system	■	■	■	■

### Bedrooms

Dressing area to Bedroom 1		■		■
----------------------------	--	---	--	---

### Doors and Windows

	2 bedroom The Rosemary The Chive The Chervil	3 bedroom The Basil The Thyme The Thyme II The Marjoram The Sage The Carraway The Tarragon	4 bedroom The Fennel The Sorrel The Lovage	5 bedroom The Bay
Front door with multi-point security locking system and security chain	■	■	■	■
Chrome plated front door numerals	■	■	■	■
PVCu double glazing to windows	■	■	■	■
Double glazed PVCu French doors	■	■	■	■
Powder coated aluminium double glazed bi-fold doors		■		■
Internal cottage style pre-primed doors with brass satin finish handles	■	■	■	■
Paving outside French / bi-fold door	■	■	■	■

### General

PV solar panels	■	■	■	■
EV charging points	■	■	■	■
White painted walls and smooth white ceilings	■	■	■	■
Combined usb / double sockets in kitchen and bedroom 1	■	■	■	■
Multi-media point in living room	■	■	■	■
Master telephone socket to lounge and study where applicable	■	■	■	■
Gas central heating with wall mounted combi-boiler, programme selector and room thermostat(s)	■	■	■	■
Gas central heating with wall mounted boiler and separate hot water cylinder, programme selector and room thermostat(s)				■
Thermostatic valves to all radiators (with the exception of rooms with separate thermostat control)	■	■	■	■
Fitted external tap	■	■	■	■
External light fitted to front porch and wiring for external light to rear door	■	■	■	■
Mains wired smoke detectors with battery back-up	■	■	■	■
Battery powered Carbon Monoxide detector (wall mounted)	■	■	■	■
Power and lighting to 'on plot' garage (where applicable)	■	■	■	■
Enclosed fenced rear garden, and garden gate (where applicable).	■	■	■	■
Landscaped front gardens	■	■	■	■
NHBC Buildmark cover	■	■	■	■
First two years' customer service support from Bovis Homes	■	■	■	■

■ Fitted as standard - included in the property  
\* Subject to stage of construction

## So much choice...

Part of the excitement of buying a new home is the thrill of being the first person to live in the property and having a brand new contemporary kitchen and modern bathroom. Our premium brand partners ensure that all of our fixtures and fittings comply with the latest Government building regulations and only branded appliances are installed in your new home.

Once you know what specification comes included, you'll have a choice from our specially selected tiles for your kitchen and bathrooms, as well as kitchen worktops and cupboard doors. You can then use the Bovis Homes **Select** brochure to add the finishing touches to your home to make it extra special for you!

From personalising your bathrooms with stunning ceramics, or adding smooth sliding wardrobes to your master bedroom, there are a wide range of additional options and upgrades available.

The availability of items is subject to the stage of build, and can vary by development and house type. Our sales consultants will be happy to provide guidance.



The specification shown is correct at the time of production. Bovis Homes is continually reviewing and updating the specification on all house / apartment types and therefore reserves the right to change specification details. Photographs depict typical Bovis Homes interiors and may include optional upgrades. For full details regarding the current specification and finishes, please speak to our sales consultant.

Produced by the Vistry Group Design Studio.

When you have finished with this leaflet please recycle it.

125-SZ541 DS11764 / 11.24

**Bovis  
Homes** 