

# Whitehouse Park

Milton Keynes





# Whitehouse Park

Milton Keynes

A taste of local life

[bovishomes.co.uk](http://bovishomes.co.uk)

**Bovis  
Homes** 





# Welcome to Whitehouse Park

On the outskirts of vibrant Milton Keynes, Whitehouse Park combines the convenience of city-style living with easy access to the beautiful Buckinghamshire countryside.

Milton Keynes offers a wealth of sport, leisure, culture and shopping and there are local health services and schools. For commuters London is just 35 minutes by train.

There's a wide choice of brand new homes, each carefully designed to suit the needs of today's lifestyles. So if you're looking for a new home from which to enjoy both city and country living, your search ends here.

## Getting around

Whitehouse Park is just a few minutes from the A5, the major trunk road linking the city to the Midlands and Bedfordshire. Junction 14 of the M1 lies about 3 miles east of the centre and is easily reached by the A509. The M1 links directly to London and M25, to the Midlands and the north. Trains run from Milton Keynes Central direct to London Euston, in 35 minutes, and to Birmingham New Street. For air travel Luton Airport is 26 miles away.

## A trip to the shops

There are a number of local convenience stores close to Whitehouse Park and there's a Sainsburys supermarket just 2 miles away. The centre has more than 400 shops and regular French, German and Italian markets. The central Milton Keynes shopping area consists of the centre:mk and intu Milton Keynes. Together they boast over 270 stores, hosting thousands of brand names and the centre:mk is an official patron of the British Fashion Council. On the edge of the shopping area is the outdoor market and The Hub. The Hub has a mix of bars and restaurants. Just outside of central Milton Keynes there is the Kingston Centre, close to the M1, has some big brand names including a Tesco Extra and the MK1 shopping park near Bletchley has a range of leading fashion giants and restaurants.

In the more rural towns, such as Stony Stratford, you'll find smaller boutiques, craft, gift and antiques shops as well as farmers' markets.

## Taking time out

Milton Keynes is packed with sport, leisure and entertainment opportunities. From indoor sky-diving at Xscape to an assortment of outdoor activities at Willen Lake. The Casino MK is the largest outside London and The National Bowl is a major outdoor live music venue. There's a 16 and an 11 screen multiplex cinema plus a host of leisure, sports and fitness clubs and 125 miles of cycle paths.

Milton Keynes has its own museum, 1,400 seat theatre and several arts centres. There are more than 5,000 acres of parkland, lakes and woodlands to enjoy with more than 22 million trees, the Grand Union Canal and River Great Ouse. Outside Milton Keynes you'll find the National Trust's Stowe Gardens and Bletchley Park, home of WW2's secret code breakers.

## Education

Whitehouse Primary School is a new purpose built school in the heart of the Whitehouse. Just over a mile away in Two Mile Ash is Ashbrook School. The Queen Eleanor and Christ the Sower Ecumenical Primary, are also within easy reach, as is Greenleys First School. For senior pupils there's Denbigh School, the Hazeley Academy and the Radcliffe School. The new University Centre Milton Keynes, offers further education.





# Whitehouse Park

Milton Keynes  
MK8 1AL

## From M1 Junction 14

- Take the exit from the roundabout onto the A509 (signposted Buckingham and Milton Keynes north and west)
- At the 5th roundabout, take the 1st exit onto Danstead Way H4
- At the 7th roundabout take the 2nd exit onto Longhorn Drive
- Take the 2nd right onto Shorthorn Drive
- Whitehouse Park can be found on the right hand side

## From A508 / A5 roundabout

- At the roundabout, take the exit onto A5 towards Milton Keynes
- Take the A422 exit towards Milton Keynes North East & West / Bedford / Wolverton
- At the roundabout, take the 4th exit onto V5 Great Monks St
- At Lodge roundabout, take the 2nd exit onto H4 Danstead Way
- At Crownhill roundabout, take the 2nd exit and stay on H4 Danstead Way
- At the 2nd roundabout, take the 3rd exit onto Longhorn Drive
- Take the 2nd right onto Shorthorn Drive
- Whitehouse Park can be found on the right hand side



When you have finished with this leaflet please recycle it.

Cover photograph of Lodge Lake. Not view from the development. The streetscene shown above has been produced for illustrative purposes only, please check the details of the homes you are interested in with the sales consultant.

Bovis Homes Limited, Northern Home Counties region  
Building 7, Caldecotte Lake Business Park, Milton Keynes, Buckinghamshire MK7 8JU. Telephone: 01908 088 500

Produced by the Vistry Group Design Studio.

MMJKL DS05561 / 04.23







# Whitehouse Park

Milton Keynes

Development plan  
for area off Watling Street

[bovishomes.co.uk](http://bovishomes.co.uk)





# Whitehouse Park

Milton Keynes



**1 bedroom home**

The Eila

**1 and 2 bedroom homes**

Watling Manor

**2 bedroom home**

The Hawthorn

The Sylvie

**3 bedroom home**

The Hazel

The Spruce

The Spruce II

The Cypress

The Magnolia

**4 bedroom home**

The Juniper

The Chestnut

The Chestnut II

The Aspen

The Nash

**Pre-sold homes**

1 and 2 bedroom apartments

2 bedroom apartments

2 bedroom homes

3 bedroom homes

ps pumping station

bcp bin collection point

\* Milton Keynes Connected Home.  
Please ask sales consultant for further details





# Whitehouse Park

Milton Keynes  
MK8 1AL

## From M1 Junction 14

- Take the exit from the roundabout onto the A509 (signposted Buckingham and Milton Keynes north and west)
- At the 5th roundabout, take the 1st exit onto Dansteed Way H4
- At the 7th roundabout take the 2nd exit onto Longhorn Drive
- Take the 2nd right onto Shorthorn Drive
- Whitehouse Park can be found on the right hand side

## From A508 / A5 roundabout

- At the roundabout, take the exit onto A5 towards Milton Keynes
- Take the A422 exit towards Milton Keynes North East & West / Bedford / Wolverton
- At the roundabout, take the 4th exit onto V5 Great Monks St
- At Lodge roundabout, take the 2nd exit onto H4 Dansteed Way
- At Crownhill roundabout, take the 2nd exit and stay on H4 Dansteed Way
- At the 2nd roundabout, take the 3rd exit onto Longhorn Drive
- Take the 2nd right onto Shorthorn Drive
- Whitehouse Park can be found on the right hand side



Cover photograph of Lodge Lake. Not view from the development. The streetscene shown above has been produced for illustrative purposes only, please check the details of the homes you are interested in with the sales consultant.

This plan has been produced for home identification purposes only and is not to scale. The development layout, landscaping and tenure of all dwellings may be subject to change throughout the course of the development. Finishes and materials may vary from those shown on the plan. Please check the details of your chosen plot and house type with the sales consultant. Development layout plan correct at time of production.

Vistry Northern Home Counties region

Building 7, Caldecotte Lake Business Park, Milton Keynes, Buckinghamshire MK7 8JU. Telephone: 01908 088 500

Produced by the Vistry Group Design Studio.

When you have finished with this leaflet please recycle it.

MMJKL DS11123 / 07.24

**Bovis  
Homes** 

Use this guide to see what features are included in your new home. Your sales consultant will be happy to discuss the **Select** range of extras available.

#### Kitchen

- Choice of fitted kitchen (doors and worktops)\*
- Integrated oven, hob and hood

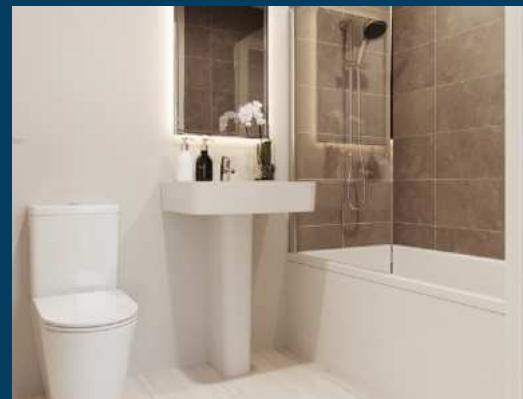
#### Bathroom

- Shower over bath with glazed screen and choice of Porcelanosa wall tiling\*

#### General

- White painted walls and smooth white ceilings
- Front door with multi-point security locking system and security chain
- PVCu double glazing to windows
- Audio door entry locking system
- White painted doors with chrome lever handles
- Media plate to sitting room
- Master telephone socket
- Gas central heating with wall mounted boiler, programme selector and room thermostat(s)
- Thermostatic valves to all radiators (with the exception of rooms with separate thermostat control)
- Mains wired smoke detectors with battery back-up
- NHBC Buildmark cover

\* Subject to stage of construction



# Watling Manor

Milton Keynes

When you have finished with this leaflet please recycle it.

The specification shown in this leaflet is correct at the time of going to press. Bovis Homes is continually reviewing and updating the specification on all housetypes and therefore reserves the right to change specification details. Photographs depict a typical Bovis Homes interior and may include optional upgrades. For full details regarding current specification and finishes, for the plots you are interested in, please refer to our sales consultant.

This leaflet has been produced for illustrative purposes only. The apartment building shown (including its position) is a computer generated artists impression. Any surrounding areas, landscaping, roads, footpaths, driveways, walls, fences, trees, bushes and other details shown in this illustration are merely to create an impression. Please refer to the sales consultant for details of individual apartments. Please see the development layout plan for details of the apartment location and proximity to other houses.

Produced by the Vistry Group Design Studio.

MMILT DSXX0035 / 10.23



1 and 2 bedroom apartments

[bovishomes.co.uk](http://bovishomes.co.uk)

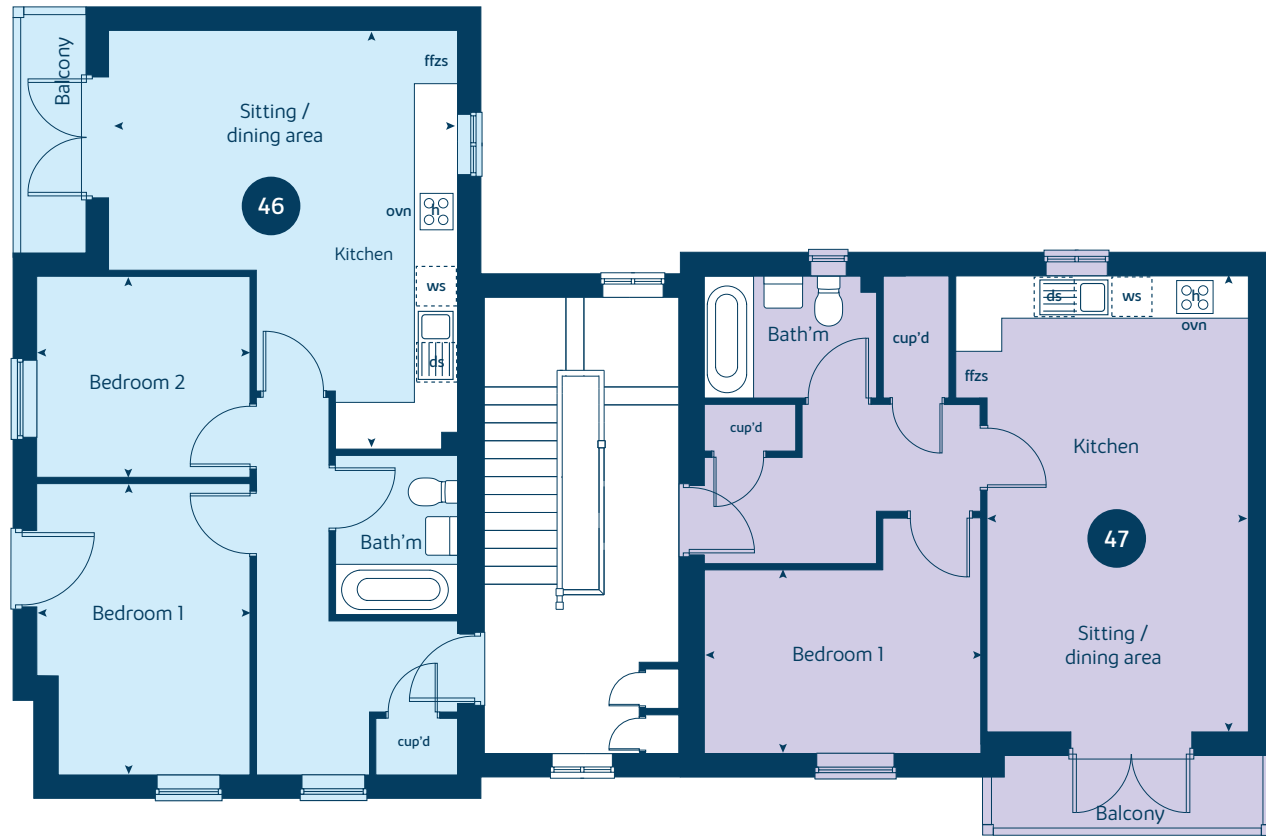




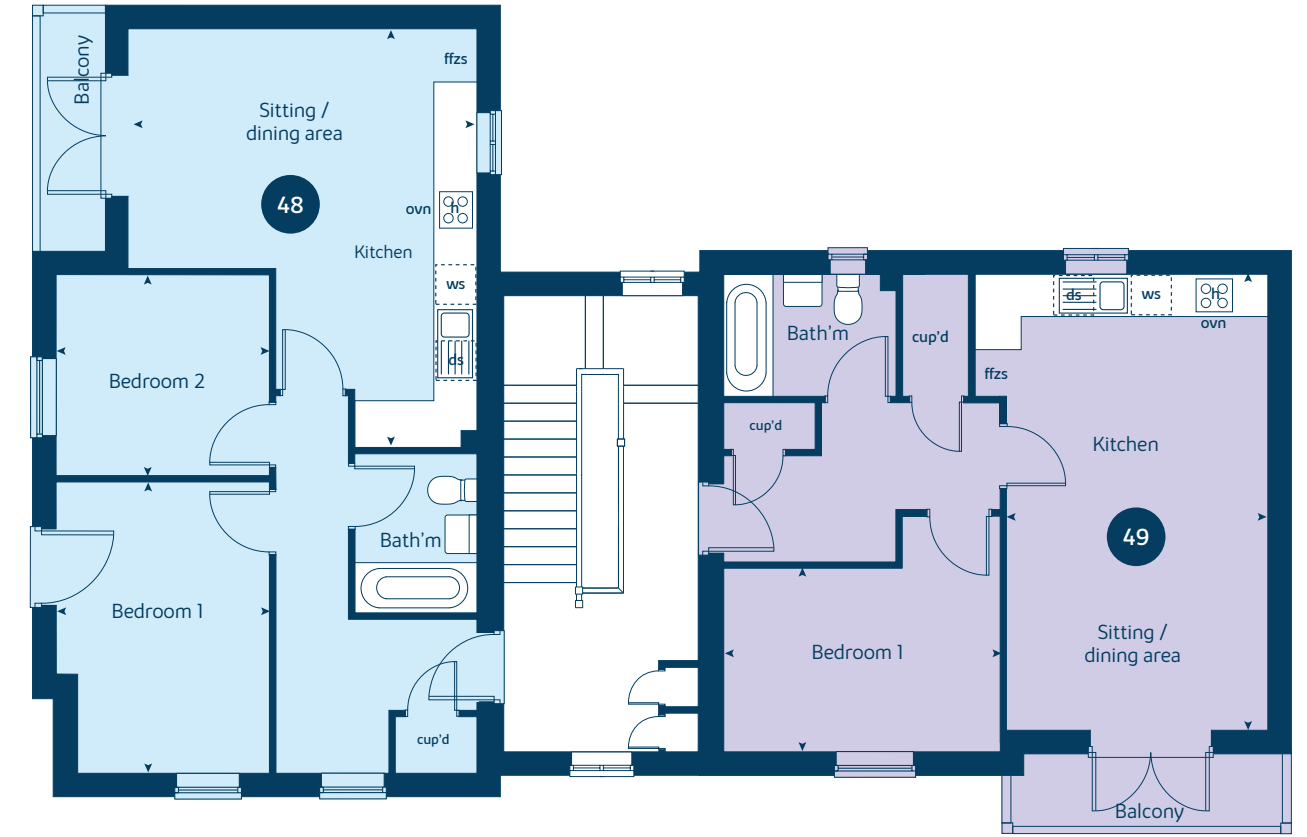
# Watling Manor

## 1 and 2 bedroom apartments

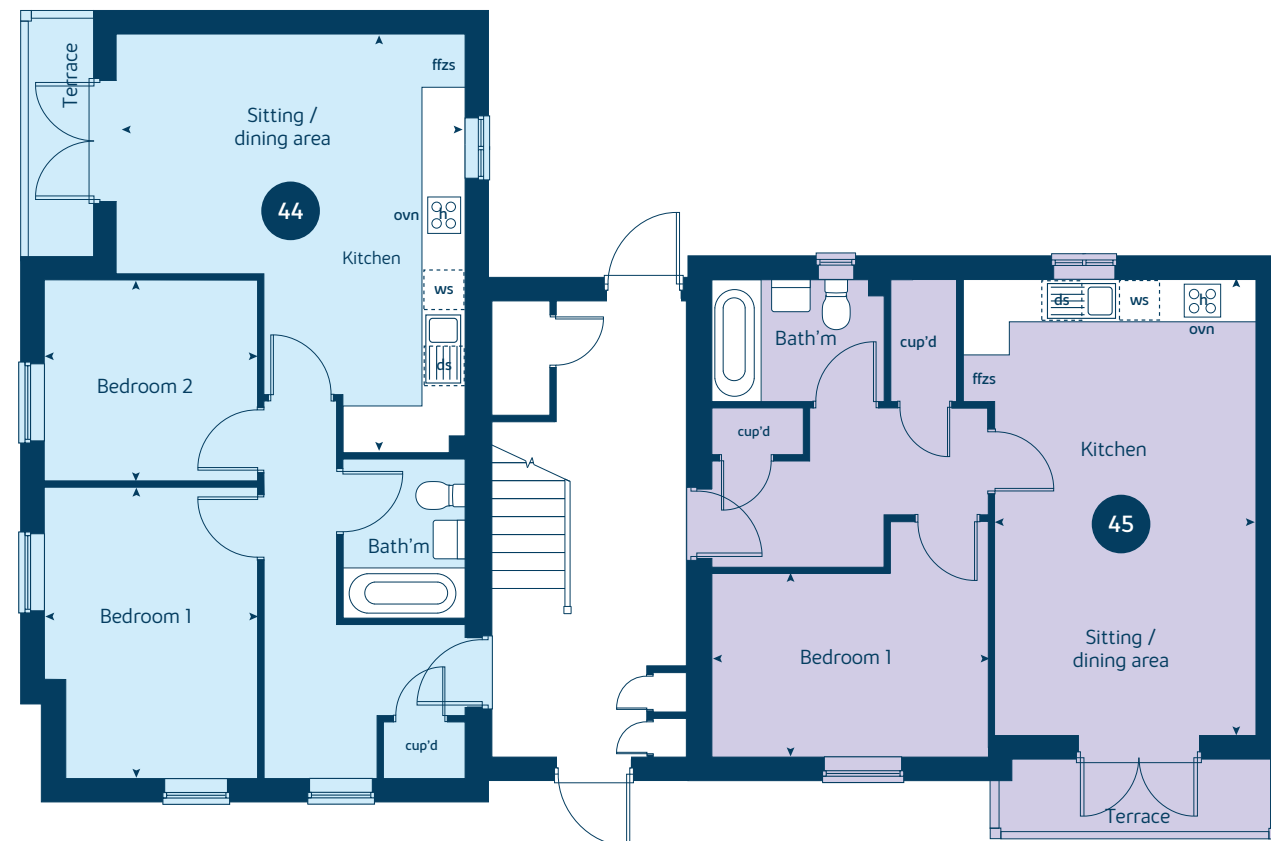
First floor



Second floor



Ground floor



● Apartments 45, 47 and 49

	metres	feet / inches
Kitchen / sitting / dining area	6.34 x 3.62	20' 10" x 11' 11"
Bedroom 1	3.85 x 2.54	12' 8" x 8' 4"

● Apartments 44, 46 and 48

	metres	feet / inches
Kitchen / sitting / dining area	5.77 x 4.85	18' 11" x 15' 11"
Bedroom 1	4.04 x 2.95	13' 3" x 9' 8"
Bedroom 2	2.95 x 2.78	9' 8" x 9' 1"

**Watling Manor | MMJKL |**

This floorplan has been produced for illustrative purposes only. Room sizes shown are between arrow points as indicated on plan. The dimensions have tolerances of + or -50mm and should not be used other than for general guidance. If specific dimensions are required, enquiries should be made to the sales consultant.

ovn	oven	ffzs	fridge freezer space
h	hob	cup'd	cupboard
ws	washing machine space	◀ ▶	measuring points



# The Eila

1 bedroom home

[bovishomes.co.uk](https://bovishomes.co.uk)

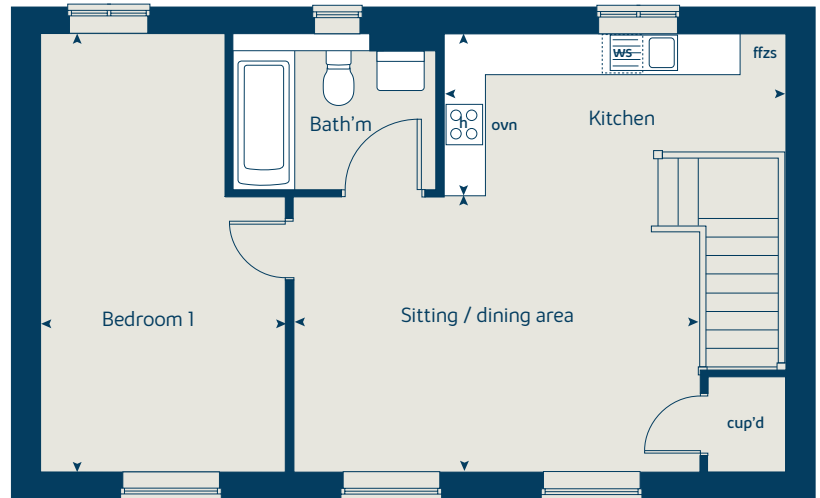
**Bovis  
Homes** 



# The Eila

1 bedroom home

## First floor



First floor	metres	feet / inches
Kitchen	3.82 x 1.97	12' 7" x 6' 6"
Sitting / dining area	4.54 x 3.34	14' 11" x 11' 0"
Bedroom 1	5.34 x 2.73	17' 6" x 9' 0"

### The Eila | XF201 V1 MMJKL |

This floorplan has been produced for illustrative purposes only. Room sizes shown are between arrow points as indicated on plan. The dimensions have tolerances of + or -50mm and should not be used other than for general guidance. If specific dimensions are required, enquiries should be made to the sales consultant.

ovn	oven	ffzs	fridge freezer space
h	hob	cup'd	cupboard
ws	washing machine space	◀ ▶	measuring points

Please refer to the sales consultant for specific plot details as the illustrations shown are computer generated impressions of how the property may look so are indicative only. External details or finishes may vary on individual plots and homes may be built in either detached or attached styles depending on the development layout. Exact specifications, window styles and whether a property is left or right handed may differ from plot to plot.

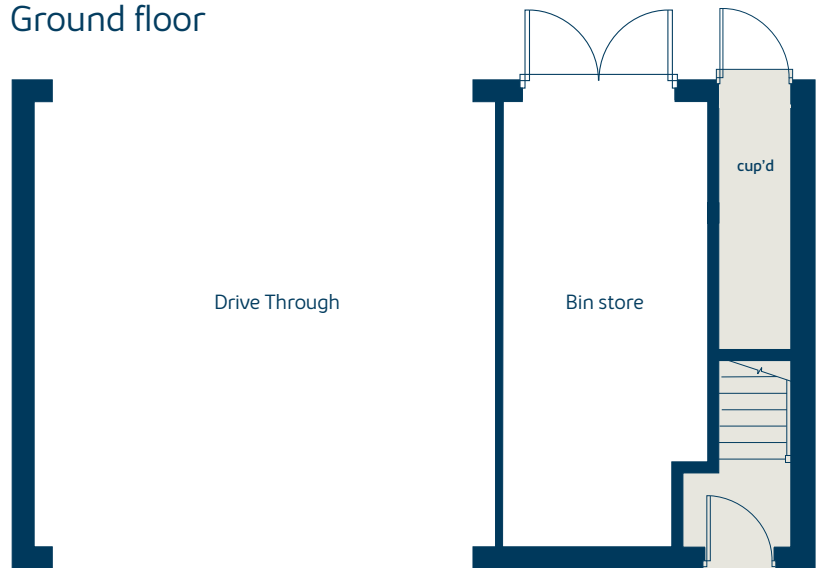
The floorplans shown are not to scale. Measurements are based on the original drawings. Slight variations may occur during construction.

Produced by the Vistry Group Design Studio.

When you have finished with this leaflet please recycle it.

MMJKL DS05561 / 05.23

## Ground floor





# The Sylvie

2 bedroom home

[bovishomes.co.uk](http://bovishomes.co.uk)

**Bovis  
Homes** 



# The Sylvie

## 2 bedroom home

Ground floor	metres	feet/inches
Kitchen	4.47 x 3.04	14' 8" x 10' 0"
Sitting / dining area	5.27 x 2.95	17' 4" x 9' 8"

### First floor

Bedroom 1	4.47 x 2.82	14' 8" x 9' 3"
Bedroom 2	4.67 x 2.16	15' 4" x 7' 1"

### The Sylvie | SH203 & SH203V2 MMJKL |

This floorplan has been produced for illustrative purposes only. Room sizes shown are between arrow points as indicated on plan. The dimensions have tolerances of + or -50mm and should not be used other than for general guidance. If specific dimensions are required, enquiries should be made to the sales consultant.

- ① Alternative layout applies to plots 50 and 51 only. Please see sales consultant for further details.

ovn	oven	ffzs	fridge freezer space
h	hob	cup'd	cupboard
ds	dishwasher space	◀ ▶	measuring points
ws	washing machine space		

Please refer to the sales consultant for specific plot details as the illustrations shown are computer generated impressions of how the property may look so are indicative only. External details or finishes may vary on individual plots and homes may be built in either detached or attached styles depending on the development layout. Exact specifications, window styles and whether a property is left or right handed may differ from plot to plot.

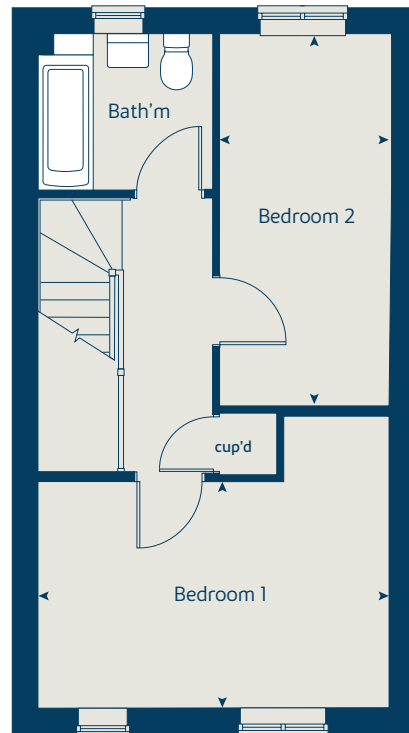
The floorplans shown are not to scale. Measurements are based on the original drawings. Slight variations may occur during construction.

Produced by the Vistry Group Design Studio.

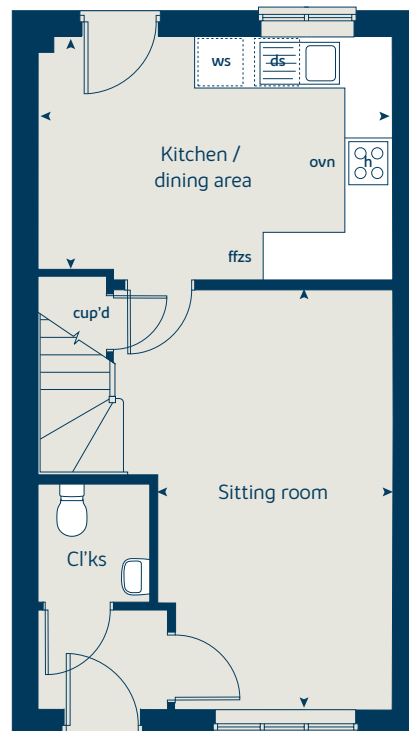
When you have finished with this leaflet please recycle it.

MMJKL DS04303 / 11.22

## First floor



## Ground floor





# The Hawthorn

2 bedroom home

[bovishomes.co.uk](http://bovishomes.co.uk)

**Bovis  
Homes** 



# The Hawthorn

## 2 bedroom home

Ground floor	metres	feet / inches
Kitchen	3.73 x 2.92	12' 2" x 9' 6"
Sitting / dining area	4.07 x 3.87	13' 4" x 12' 8"

### First floor

Bedroom 1	4.07 x 2.67	13' 4" x 8' 9"
Bedroom 2	4.07 x 2.80	13' 4" x 9' 2"

### The Hawthorn | X203 MMJKL |

This floorplan has been produced for illustrative purposes only. Room sizes shown are between arrow points as indicated on plan. The dimensions have tolerances of + or -50mm and should not be used other than for general guidance. If specific dimensions are required, enquiries should be made to the sales consultant.

\* Windows apply to plots 78 and 83 only. Please see sales consultant for further details.

ovn	oven	ffzs	fridge freezer space
h	hob	cup'd	cupboard
ds	dishwasher space	◀ ▶	measuring points
ws	washing machine space		

Please refer to the sales consultant for specific plot details as the illustrations shown are computer generated impressions of how the property may look so are indicative only. External details or finishes may vary on individual plots and homes may be built in either detached or attached styles depending on the development layout. Exact specifications, window styles and whether a property is left or right handed may differ from plot to plot.

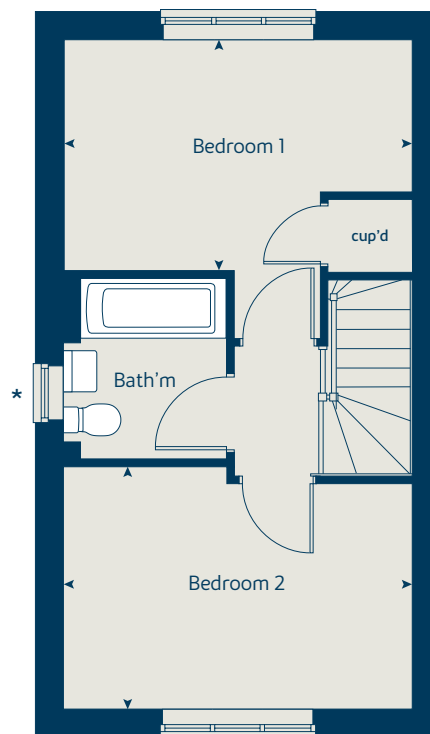
The floorplans shown are not to scale. Measurements are based on the original drawings. Slight variations may occur during construction.

Produced by the Vistry Group Design Studio.

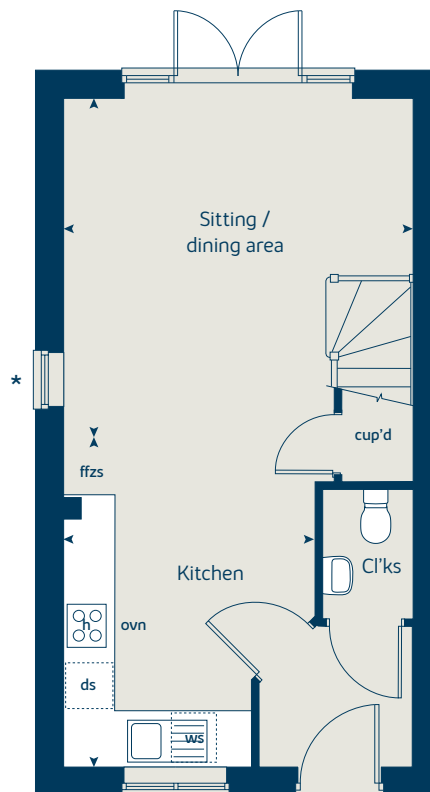
When you have finished with this leaflet please recycle it.

MMJKL DS05561 / 05.23

### First floor



### Ground floor





# The Hazel

3 bedroom home

[bovishomes.co.uk](http://bovishomes.co.uk)

**Bovis  
Homes** 



# The Hazel

## 3 bedroom home

Ground floor	metres	feet / inches
Kitchen / dining room	5.19 x 2.98	17' 0" x 9' 8"
Sitting room	4.15 x 3.66	13' 8" x 12' 0"

### First floor

Bedroom 1	3.52 x 3.27	11' 7" x 10' 9"
Bedroom 2	2.93 x 2.71	9' 8" x 8' 11"
Bedroom 3	3.47 x 2.14	11' 5" x 7' 0"

### The Hazel | X305 & X305V2 MMJKL |

This floorplan has been produced for illustrative purposes only. Room sizes shown are between arrow points as indicated on plan. The dimensions have tolerances of + or -50mm and should not be used other than for general guidance. If specific dimensions are required, enquiries should be made to the sales consultant.

\* Window applicable to plots 13, 103, 105, 114, 115, 117, 120, 146, 151, 211, 212, 213, 214 and 219 only. Please see sales consultant for further details.

\*\* Window applicable to plots 13, 103, 105, 114, 115, 117, 120, 146, 151, 211, 212, 213, 214 and 219 only. Please see sales consultant for further details.

① Alternative layout applies to plots 13, 80, 81, 101, 102, 114, 115, 117, 118, 119, 120, 146, 147, 148, 149, 150, 151, 161, 163, 164, 171, 172, 173, 211, 212, 213, 214, 215, 216, 217, 218 and 219 only. Please see sales consultant for further details.

ovn	oven	ffzs	fridge freezer space
h	hob	cup'd	cupboard
ds	dishwasher space	◀ ▶	measuring points
ws	washing machine space		

Please refer to the sales consultant for specific plot details as the illustrations shown are computer generated impressions of how the property may look so are indicative only. External details or finishes may vary on individual plots and homes may be built in either detached or attached styles depending on the development layout. Exact specifications, window styles and whether a property is left or right handed may differ from plot to plot.

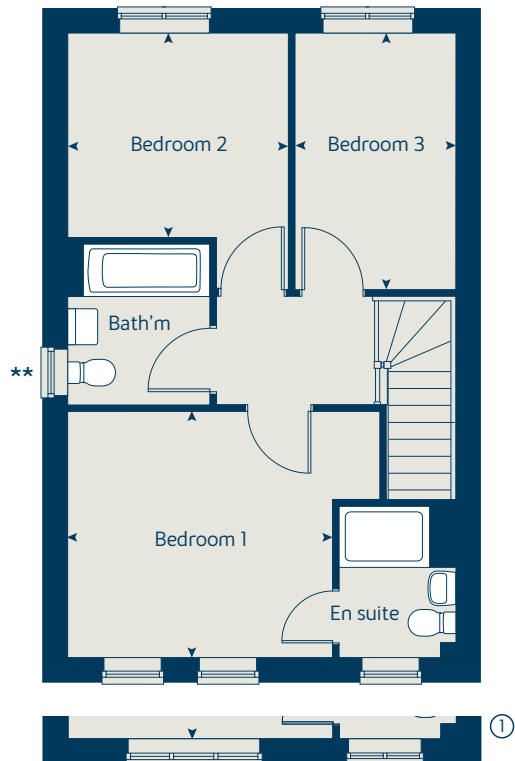
The floorplans shown are not to scale. Measurements are based on the original drawings. Slight variations may occur during construction.

Produced by the Vistry Group Design Studio.

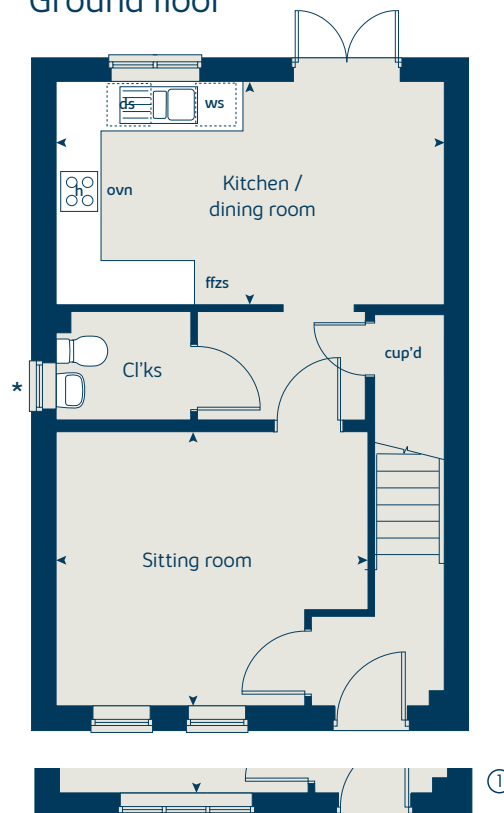
When you have finished with this leaflet please recycle it.

MMJKL DS05561 / 05.23

## First floor



## Ground floor





# The Spruce

3 bedroom home

[bovishomes.co.uk](http://bovishomes.co.uk)

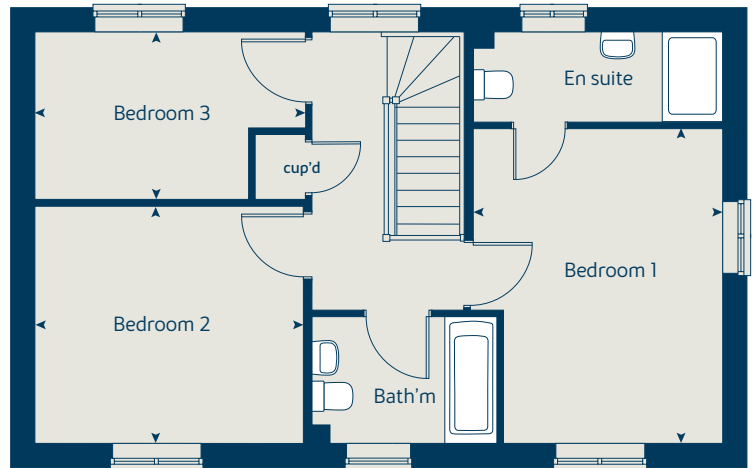
**Bovis  
Homes** 



# The Spruce

## 3 bedroom home

### First floor



Ground floor	metres	feet / inches
Kitchen / dining area	5.52 x 3.54	18' 2" x 11' 8"
Sitting room	5.52 x 3.32	18' 2" x 10' 10"

#### First floor

Bedroom 1	4.22 x 3.34	13' 10" x 11' 0"
Bedroom 2	3.58 x 3.17	11' 9" x 10' 5"
Bedroom 3	3.62 x 2.24	11' 11" x 7' 4"

#### The Spruce | X307 (IF) V4&V5 MMJKL |

This floorplan has been produced for illustrative purposes only. Room sizes shown are between arrow points as indicated on plan. The dimensions have tolerances of + or -50mm and should not be used other than for general guidance. If specific dimensions are required, enquiries should be made to the sales consultant.

\* Window applies to plot 113 only. Please see sales consultant for further details.

ovn	oven	ffzs	fridge freezer space
h	hob	cup'd	cupboard
ds	dishwasher space	◀ ▶	measuring points
ws	washing machine space		

Please refer to the sales consultant for specific plot details as the illustrations shown are computer generated impressions of how the property may look so are indicative only. External details or finishes may vary on individual plots and homes may be built in either detached or attached styles depending on the development layout. Exact specifications, window styles and whether a property is left or right handed may differ from plot to plot.

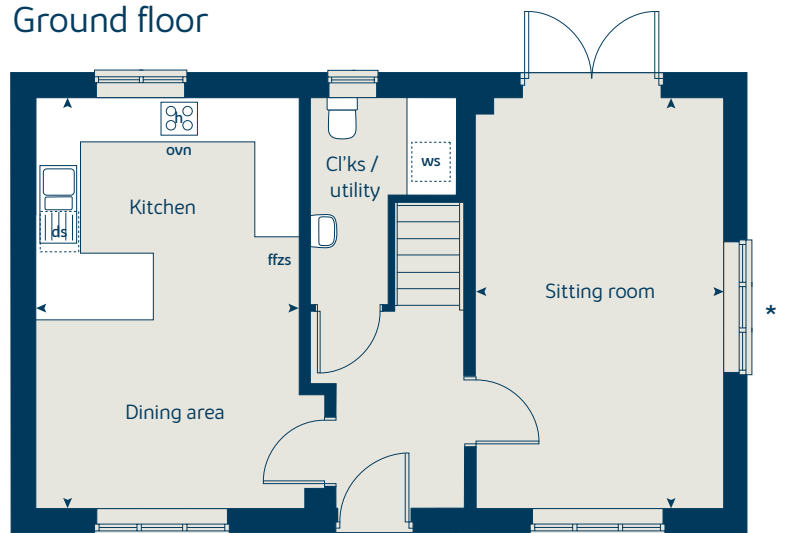
The floorplans shown are not to scale. Measurements are based on the original drawings. Slight variations may occur during construction.

Produced by the Vistry Group Design Studio.

When you have finished with this leaflet please recycle it.

MMJKL DS05561 / 05.23

### Ground floor





# The Spruce II

3 bedroom home

[bovishomes.co.uk](http://bovishomes.co.uk)

**Bovis  
Homes** 



# The Spruce II

## 3 bedroom home

Ground floor	metres	feet / inches
Kitchen / dining area	5.52 x 3.54	18' 2" x 11' 8"
Sitting room	5.52 x 3.32	18' 2" x 10' 10"

### First floor

Bedroom 1	4.22 x 3.34	13' 10" x 11' 0"
Bedroom 2	3.58 x 3.18	11' 9" x 10' 5"
Bedroom 3	3.62 x 2.24	11' 11" x 7' 4"

### The Spruce II | X307 (IF) V1&V2 MMJKL |

This floorplan has been produced for illustrative purposes only. Room sizes shown are between arrow points as indicated on plan. The dimensions have tolerances of + or -50mm and should not be used other than for general guidance. If specific dimensions are required, enquiries should be made to the sales consultant.

- + Window to plots 16 and 17 only. Please see sales consultant for further details.
- \* Window to plots 160 and 162 only. Please see sales consultant for further details.
- \*\* Window omitted to plots 97, 160, 162, 184 and 209. Please see sales consultant for further details.
- \*\*\* Window omitted to plots 14, 160 and 162 only. Please see sales consultant for further details.
- ① Bay window applies to plots 9, 14, 39, 42, 52, 63, 92, 97, 104, 108, 116, 121, 126, 145, 155, 156, 166, 184 and 209 only. Please see sales consultant for further details.
- ② Alternative layout to plots 16 and 17 only. Please see sales consultant for further details.
- ③ Alternative layout to plots 39, 92, 97, 121, 126 and 184 only. Please see sales consultant for further details.

ovn	oven	ffzs	fridge freezer space
h	hob	cup'd	cupboard
ds	dishwasher space	◀ ▶	measuring points
ws	washing machine space		

Please refer to the sales consultant for specific plot details as the illustrations shown are computer generated impressions of how the property may look so are indicative only. External details or finishes may vary on individual plots and homes may be built in either detached or attached styles depending on the development layout. Exact specifications, window styles and whether a property is left or right handed may differ from plot to plot.

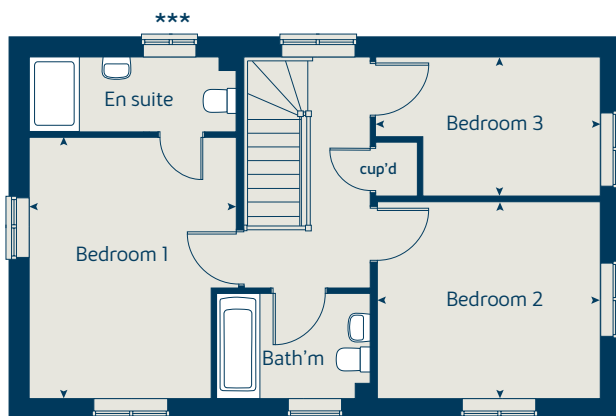
The floorplans shown are not to scale. Measurements are based on the original drawings. Slight variations may occur during construction.

Produced by the Vistry Group Design Studio.

When you have finished with this leaflet please recycle it.

MMJKL DS02520 / 06.22

### First floor



### Ground floor





# The Spruce II

3 bedroom home

[bovishomes.co.uk](https://bovishomes.co.uk)

**Bovis  
Homes** 



# The Spruce II

## 3 bedroom home

Ground floor	metres	feet / inches
Kitchen / dining area	5.52 x 3.54	18' 2" x 11' 8"
Sitting room	5.52 x 3.32	18' 2" x 10' 10"

### First floor

Bedroom 1	4.22 x 3.34	13' 10" x 11' 0"
Bedroom 2	3.58 x 3.18	11' 9" x 10' 5"
Bedroom 3	3.62 x 2.24	11' 11" x 7' 4"

### The Spruce II | X307 (IF) V3, V6 & V7 MMJKL |

This floorplan has been produced for illustrative purposes only. Room sizes shown are between arrow points as indicated on plan. The dimensions have tolerances of + or -50mm and should not be used other than for general guidance. If specific dimensions are required, enquiries should be made to the sales consultant.

- + Window to plots 16 and 17 only. Please see sales consultant for further details.
- \* Window to plots 160 and 162 only. Please see sales consultant for further details.
- \*\* Window omitted to plots 97, 160, 162, 184 and 209. Please see sales consultant for further details.
- \*\*\* Window omitted to plots 14, 160 and 162 only. Please see sales consultant for further details.
- ① Bay window applies to plots 9, 14, 39, 42, 52, 63, 92, 97, 104, 108, 116, 121, 126, 145, 155, 156, 166, 184 and 209 only. Please see sales consultant for further details.
- ② Alternative layout to plots 16 and 17 only. Please see sales consultant for further details.
- ③ Alternative layout to plots 39, 92, 97, 121, 126 and 184 only. Please see sales consultant for further details.

ovn	oven	ffzs	fridge freezer space
h	hob	cup'd	cupboard
ds	dishwasher space	◀ ▶	measuring points
ws	washing machine space		

Please refer to the sales consultant for specific plot details as the illustrations shown are computer generated impressions of how the property may look so are indicative only. External details or finishes may vary on individual plots and homes may be built in either detached or attached styles depending on the development layout. Exact specifications, window styles and whether a property is left or right handed may differ from plot to plot.

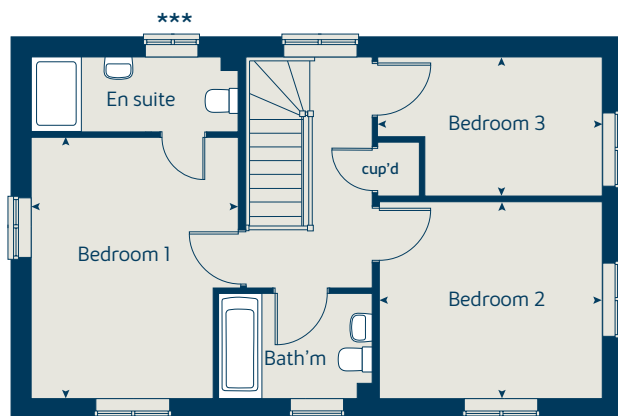
The floorplans shown are not to scale. Measurements are based on the original drawings. Slight variations may occur during construction.

Produced by the Vistry Group Design Studio.

When you have finished with this leaflet please recycle it.

MMJKL DS05561 / 05.23

### First floor



### Ground floor





# The Cypress

3 bedroom home

[bovishomes.co.uk](http://bovishomes.co.uk)

**Bovis  
Homes** 



# The Cypress

## 3 bedroom home

Ground floor	metres	feet / inches
Kitchen / dining area	5.52 x 3.12	18' 1" x 10' 2"
Sitting room	4.33 x 3.40	14' 2" x 11' 1"

### First floor

Bedroom 1	4.09 x 3.28	13' 5" x 10' 9"
Bedroom 2	3.28 x 2.82	10' 9" x 9' 3"
Bedroom 3	3.54 x 2.16	11' 7" x 7' 1"

### The Cypress | X308 (IF) 01 MMJKL |

This floorplan has been produced for illustrative purposes only. Room sizes shown are between arrow points as indicated on plan. The dimensions have tolerances of + or -50mm and should not be used other than for general guidance. If specific dimensions are required, enquiries should be made to the sales consultant.

- \* Window applies to plots 11, 64, 94, 129, 188 and 201 only. Please see sales consultant for further details.
- + Door omitted to plots 62, 94, 111, 125, 157, 167, 201, 202 and 204 only. Please see sales consultant for further details.
- ① Alternative layout applies to plots 10, 11, 64, 93, 94, 122, 125, 128, 129, 130, 185, 186, 187 and 188 only. Please see sales consultant for further details.

ovn	oven	ffzs	fridge freezer space
h	hob	cup'd	cupboard
ds	dishwasher space	◀ ▶	measuring points
ws	washing machine space		

Please refer to the sales consultant for specific plot details as the illustrations shown are computer generated impressions of how the property may look so are indicative only. External details or finishes may vary on individual plots and homes may be built in either detached or attached styles depending on the development layout. Exact specifications, window styles and whether a property is left or right handed may differ from plot to plot.

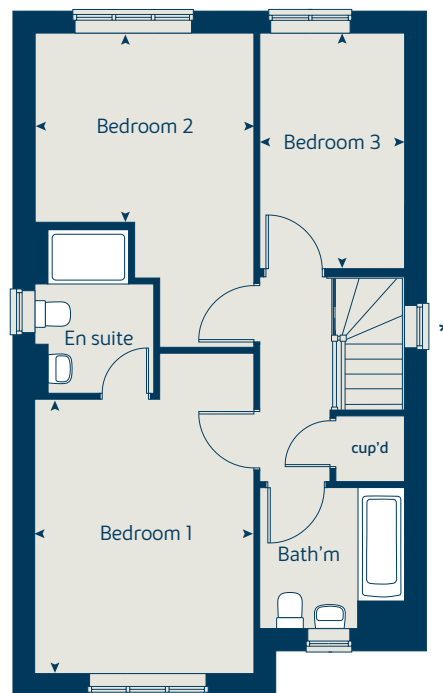
The floorplans shown are not to scale. Measurements are based on the original drawings. Slight variations may occur during construction.

Produced by the Vistry Group Design Studio.

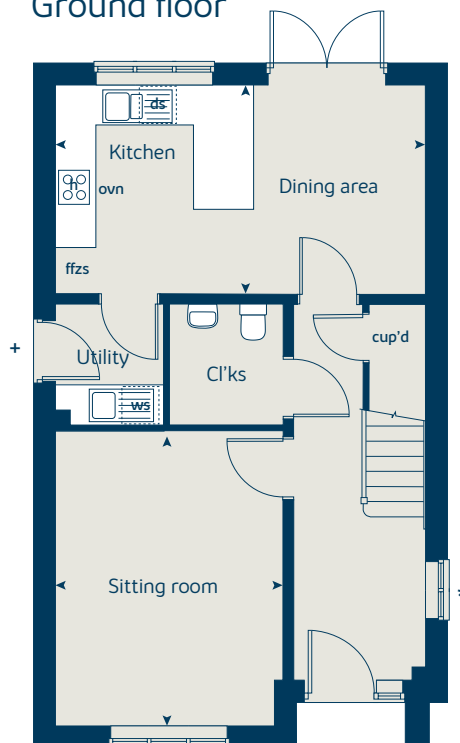
When you have finished with this leaflet please recycle it.

MMJKL DS04873 / 01.23

## First floor



## Ground floor





# The Cypress

3 bedroom home

[bovishomes.co.uk](http://bovishomes.co.uk)

**Bovis  
Homes** 



# The Cypress

## 3 bedroom home

Ground floor	metres	feet / inches
Kitchen / dining area	5.52 x 3.12	18' 1" x 10' 2"
Sitting room	4.33 x 3.40	14' 2" x 11' 1"

### First floor

Bedroom 1	4.09 x 3.28	13' 5" x 10' 9"
Bedroom 2	3.28 x 2.82	10' 9" x 9' 3"
Bedroom 3	3.54 x 2.16	11' 7" x 7' 1"

### The Cypress | X308 (IF) 01 MMJKL |

This floorplan has been produced for illustrative purposes only. Room sizes shown are between arrow points as indicated on plan. The dimensions have tolerances of + or -50mm and should not be used other than for general guidance. If specific dimensions are required, enquiries should be made to the sales consultant.

- \* Window applies to plots 11, 64, 94, 129, 188 and 201 only. Please see sales consultant for further details.
- + Door omitted to plots 62, 94, 111, 125, 157, 167, 201, 202 and 204 only. Please see sales consultant for further details.

- ① Alternative layout applies to plots 10, 11, 64, 93, 94, 122, 125, 128, 129, 130, 185, 186, 187 and 188 only. Please see sales consultant for further details.

ovn	oven	ffzs	fridge freezer space
h	hob	cup'd	cupboard
ds	dishwasher space	◀ ▶	measuring points
ws	washing machine space		

Please refer to the sales consultant for specific plot details as the illustrations shown are computer generated impressions of how the property may look so are indicative only. External details or finishes may vary on individual plots and homes may be built in either detached or attached styles depending on the development layout. Exact specifications, window styles and whether a property is left or right handed may differ from plot to plot.

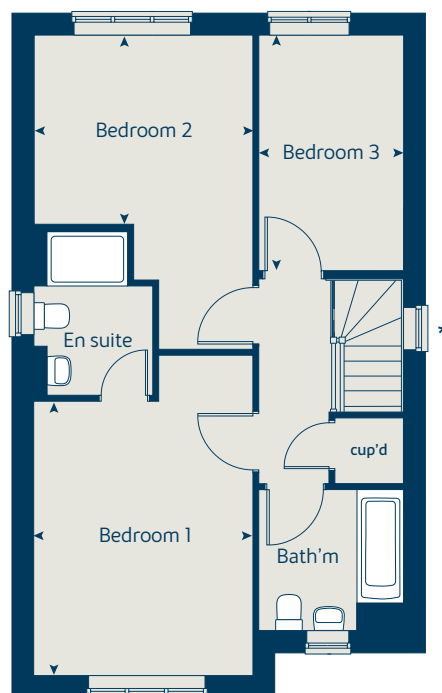
The floorplans shown are not to scale. Measurements are based on the original drawings. Slight variations may occur during construction.

Produced by the Vistry Group Design Studio.

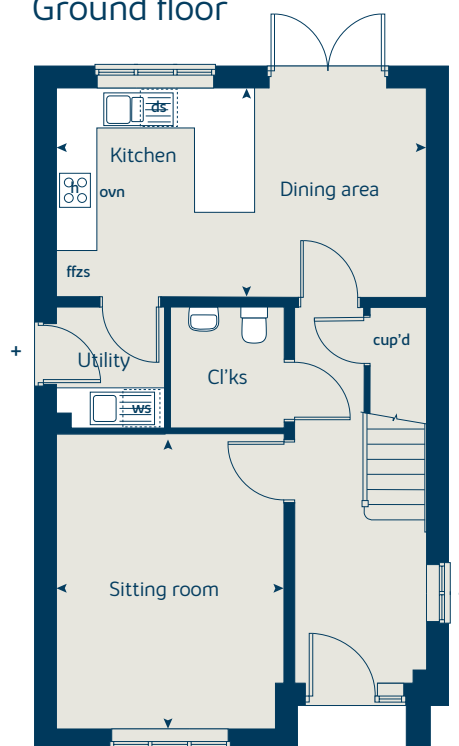
When you have finished with this leaflet please recycle it.

MMJKL DS04873 / 01.23

## First floor



## Ground floor





# The Magnolia

3 bedroom home

[bovishomes.co.uk](http://bovishomes.co.uk)

**Bovis  
Homes** 



# The Magnolia

## 3 bedroom home

Ground floor	metres	feet / inches
Kitchen / dining room	4.74 x 3.35	15' 6" x 11' 0"
Sitting room	3.70 x 3.70	12' 2" x 12' 2"

### First floor

Bedroom 1	3.05 x 2.54	10' 0" x 8' 4"
Bedroom 2	2.98 x 2.54	9' 10" x 8' 4"
Bedroom 3	2.79 x 2.08	9' 2" x 6' 10"

### The Magnolia | X327vt MMJKL |

This floorplan has been produced for illustrative purposes only. Room sizes shown are between arrow points as indicated on plan. The dimensions have tolerances of + or -50mm and should not be used other than for general guidance. If specific dimensions are required, enquiries should be made to the sales consultant.

\* Windows omitted to plots 99 and 110 only. Please see sales consultant for further details.

① Alternative layout applies to plots 98, 99, 100, 221 and 222 only. Please see sales consultant for further details.

ovn	oven	ffzs	fridge freezer space
h	hob	ldr	larder
ds	dishwasher space	cup'd	cupboard
ws	washing machine space	◀ ▶	measuring points

Please refer to the sales consultant for specific plot details as the illustrations shown are computer generated impressions of how the property may look so are indicative only. External details or finishes may vary on individual plots and homes may be built in either detached or attached styles depending on the development layout. Exact specifications, window styles and whether a property is left or right handed may differ from plot to plot.

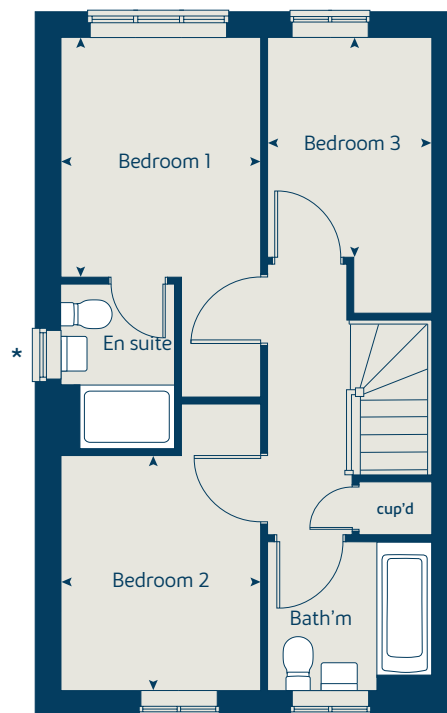
The floorplans shown are not to scale. Measurements are based on the original drawings. Slight variations may occur during construction.

Produced by the Vistry Group Design Studio.

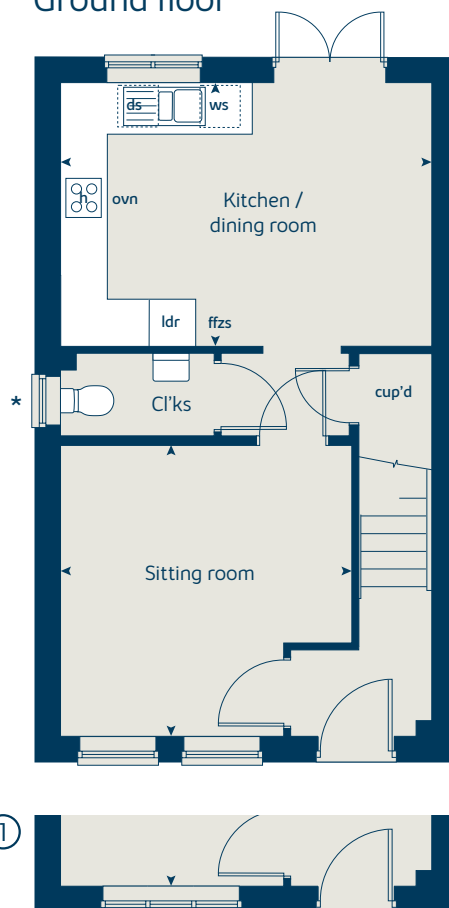
When you have finished with this leaflet please recycle it.

MMJKL DS05561 / 05.23

## First floor



## Ground floor





# The Magnolia

3 bedroom home

[bovishomes.co.uk](http://bovishomes.co.uk)

**Bovis  
Homes** 



# The Magnolia

## 3 bedroom home

Ground floor	metres	feet / inches
Kitchen / dining room	4.74 x 3.35	15' 6" x 11' 0"
Sitting room	3.70 x 3.70	12' 2" x 12' 2"

### First floor

Bedroom 1	3.05 x 2.54	10' 0" x 8' 4"
Bedroom 2	2.98 x 2.54	9' 10" x 8' 4"
Bedroom 3	2.79 x 2.08	9' 2" x 6' 10"

### The Magnolia | X327vt MMJKL |

This floorplan has been produced for illustrative purposes only. Room sizes shown are between arrow points as indicated on plan. The dimensions have tolerances of + or -50mm and should not be used other than for general guidance. If specific dimensions are required, enquiries should be made to the sales consultant.

\* Windows omitted to plots 99 and 110 only. Please see sales consultant for further details.

① Alternative layout applies to plots 98, 99, 100, 221 and 222 only. Please see sales consultant for further details.

ovn	oven	ffzs	fridge freezer space
h	hob	ldr	larder
ds	dishwasher space	cup'd	cupboard
ws	washing machine space	< >	measuring points

Please refer to the sales consultant for specific plot details as the illustrations shown are computer generated impressions of how the property may look so are indicative only. External details or finishes may vary on individual plots and homes may be built in either detached or attached styles depending on the development layout. Exact specifications, window styles and whether a property is left or right handed may differ from plot to plot.

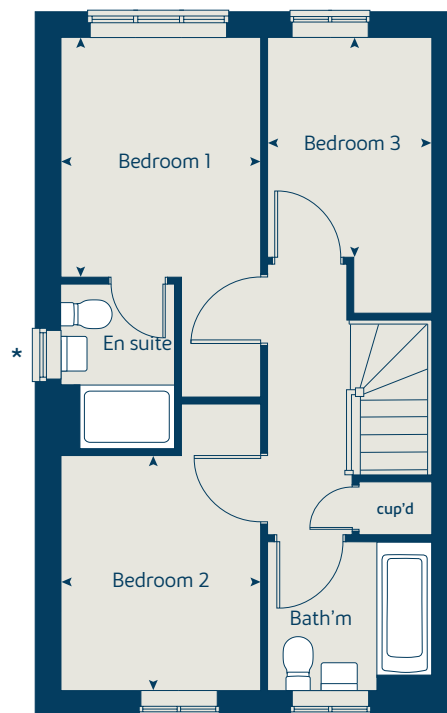
The floorplans shown are not to scale. Measurements are based on the original drawings. Slight variations may occur during construction.

Produced by the Vistry Group Design Studio.

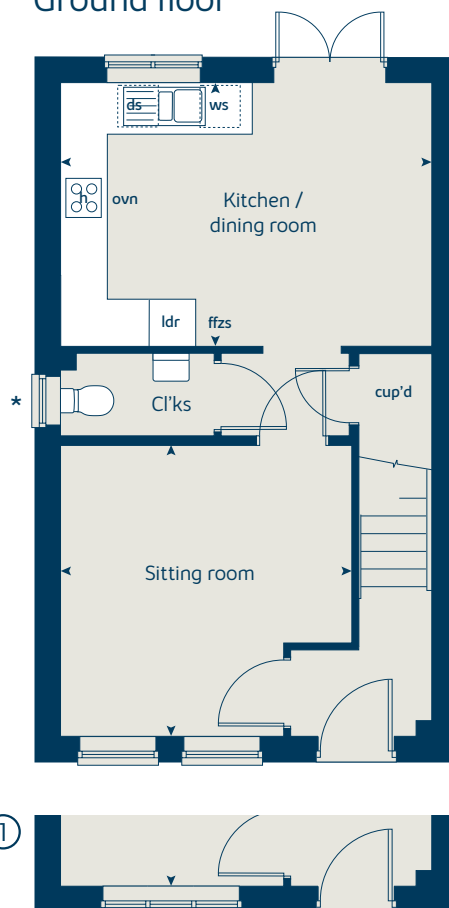
When you have finished with this leaflet please recycle it.

MMJKL DS05561 / 05.23

## First floor



## Ground floor





# The Juniper

4 bedroom home

[bovishomes.co.uk](http://bovishomes.co.uk)

**Bovis  
Homes** 



# The Juniper

## 4 bedroom home

Ground floor	metres	feet / inches
Kitchen / dining / family area	7.21 x 3.51	23' 7" x 11' 6"
Sitting room	4.55 x 3.04	14' 7" x 10' 0"
Study	2.34 x 1.85	7' 8" x 6' 0"

First floor	metres	feet / inches
Bedroom 1	4.66 x 3.05	15' 3" x 10' 0"
Bedroom 2	2.97 x 2.84	9' 8" x 9' 3"
Bedroom 3	3.60 x 2.38	11' 9" x 7' 9"
Bedroom 4	3.51 x 2.38	11' 6" x 7' 9"

### The Juniper | X412 P4 vt MMJKL |

This floorplan has been produced for illustrative purposes only. Room sizes shown are between arrow points as indicated on plan. The dimensions have tolerances of + or -50mm and should not be used other than for general guidance. If specific dimensions are required, enquiries should be made to the sales consultant.

\* Window fixed shut to plots 5, 41, 54, 60, 112 and 208. Please see sales consultant for further details.

ovn	oven	ffzr	fridge freezer
h	hob	ldr	larder
ds	dishwasher space	cup'd	cupboard
ws	washing machine space	◀ ▶	measuring points

Please refer to the sales consultant for specific plot details as the illustrations shown are computer generated impressions of how the property may look so are indicative only. External details or finishes may vary on individual plots and homes may be built in either detached or attached styles depending on the development layout. Exact specifications, window styles and whether a property is left or right handed may differ from plot to plot.

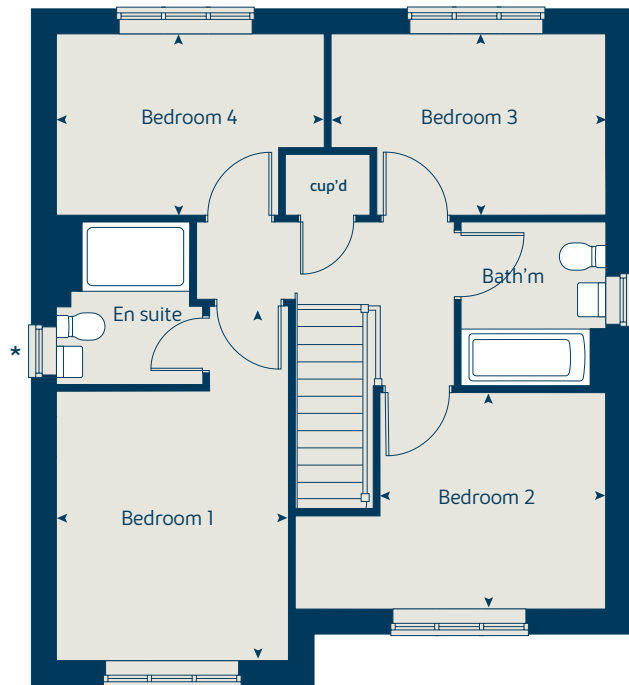
The floorplans shown are not to scale. Measurements are based on the original drawings. Slight variations may occur during construction.

Produced by the Vistry Group Design Studio.

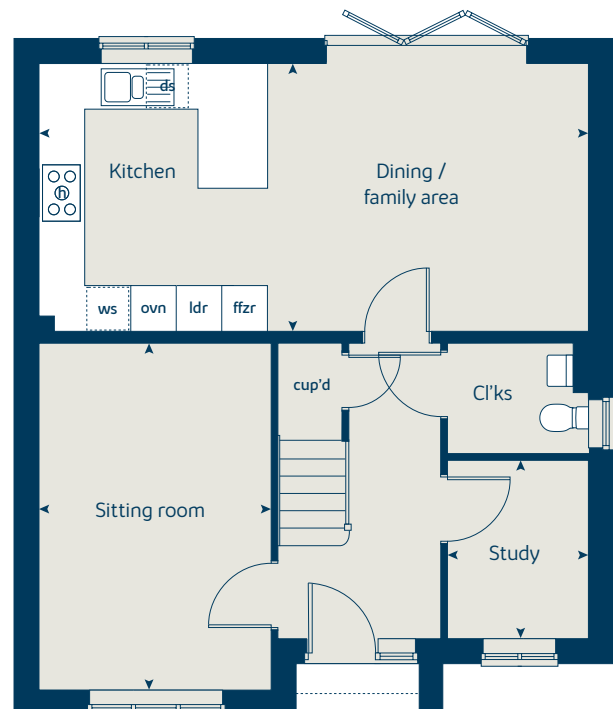
When you have finished with this leaflet please recycle it.

MMJKL DS01108 / 01.22

### First floor



### Ground floor





# The Chestnut

4 bedroom home

[bovishomes.co.uk](http://bovishomes.co.uk)

**Bovis  
Homes** 



# The Chestnut

## 4 bedroom home

Ground floor	metres	feet / inches
Kitchen	3.97 x 3.04	13' 0" x 10' 0"
Dining / family area	4.59 x 2.90	15' 1" x 9' 6"
Sitting room	4.95 x 3.40	16' 3" x 11' 2"
Study	3.40 x 1.80	11' 2" x 5' 11"

### First floor

Bedroom 1	4.46 x 3.23	14' 8" x 10' 7"
Bedroom 2	3.42 x 3.35	11' 3" x 11' 0"
Bedroom 3	3.41 x 2.29	11' 2" x 7' 6"
Bedroom 4	3.19 x 2.34	10' 6" x 7' 8"

### The Chestnut | X413 P5 MMJKL |

This floorplan has been produced for illustrative purposes only. Room sizes shown are between arrow points as indicated on plan. The dimensions have tolerances of + or -50mm and should not be used other than for general guidance. If specific dimensions are required, enquiries should be made to the sales consultant.

\* Bay window applies to plot 127 only. Please see sales consultant for further details.

① Alternative window layouts apply to plot 127 only. Please see sales consultant for further details.

ovn	oven	ffzr	fridge freezer
h	hob	ldr	larder
ds	dishwasher space	cup'd	cupboard
ws	washing machine space	<>	measuring points

Please refer to the sales consultant for specific plot details as the illustrations shown are computer generated impressions of how the property may look so are indicative only. External details or finishes may vary on individual plots and homes may be built in either detached or attached styles depending on the development layout. Exact specifications, window styles and whether a property is left or right handed may differ from plot to plot.

The floorplans shown are not to scale. Measurements are based on the original drawings. Slight variations may occur during construction.

Produced by the Vistry Group Design Studio.

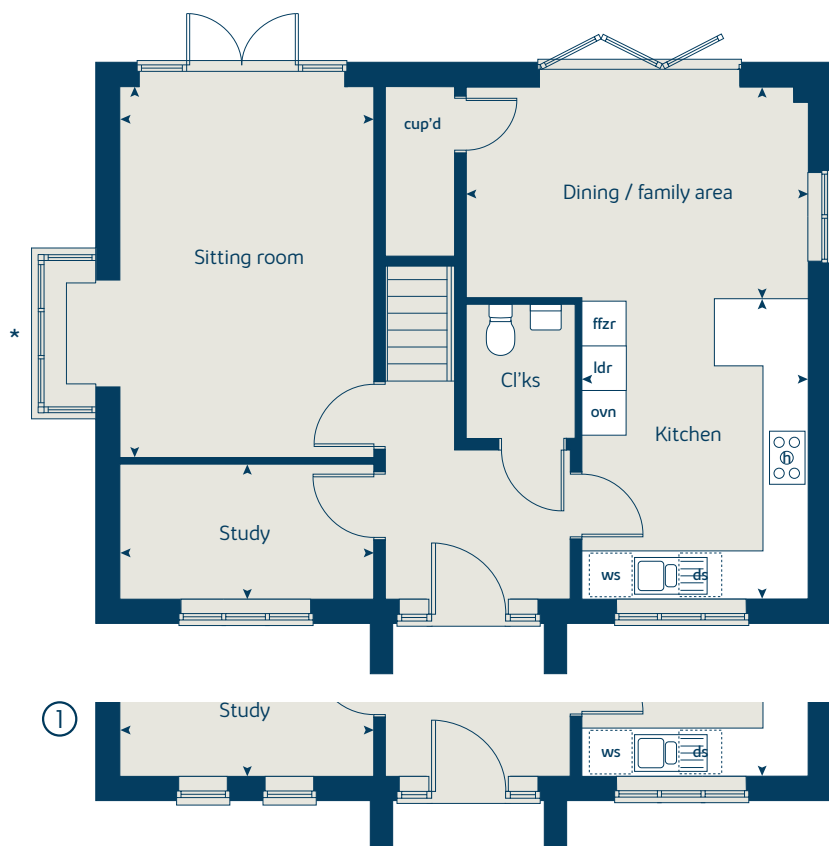
When you have finished with this leaflet please recycle it.

MMJKL DS05561 / 05.23

## First floor



## Ground floor





# The Chestnut

4 bedroom home

[bovishomes.co.uk](http://bovishomes.co.uk)

**Bovis  
Homes** 



# The Chestnut

## 4 bedroom home

Ground floor	metres	feet / inches
Kitchen	3.97 x 3.04	13' 0" x 10' 0"
Dining / family area	4.59 x 2.90	15' 1" x 9' 6"
Sitting room	4.95 x 3.40	16' 3" x 11' 2"
Study	3.40 x 1.80	11' 2" x 5' 11"

### First floor

Bedroom 1	4.46 x 3.23	14' 8" x 10' 7"
Bedroom 2	3.42 x 3.35	11' 3" x 11' 0"
Bedroom 3	3.41 x 2.29	11' 2" x 7' 6"
Bedroom 4	3.19 x 2.34	10' 6" x 7' 8"

### The Chestnut | X413 P5 MMJKL |

This floorplan has been produced for illustrative purposes only. Room sizes shown are between arrow points as indicated on plan. The dimensions have tolerances of + or -50mm and should not be used other than for general guidance. If specific dimensions are required, enquiries should be made to the sales consultant.

\* Bay window applies to plot 127 only. Please see sales consultant for further details.

① Alternative window layouts apply to plot 127 only. Please see sales consultant for further details.

ovn	oven	ffzr	fridge freezer
h	hob	ldr	larder
ds	dishwasher space	cup'd	cupboard
ws	washing machine space	< >	measuring points

Please refer to the sales consultant for specific plot details as the illustrations shown are computer generated impressions of how the property may look so are indicative only. External details or finishes may vary on individual plots and homes may be built in either detached or attached styles depending on the development layout. Exact specifications, window styles and whether a property is left or right handed may differ from plot to plot.

The floorplans shown are not to scale. Measurements are based on the original drawings. Slight variations may occur during construction.

Produced by the Vistry Group Design Studio.

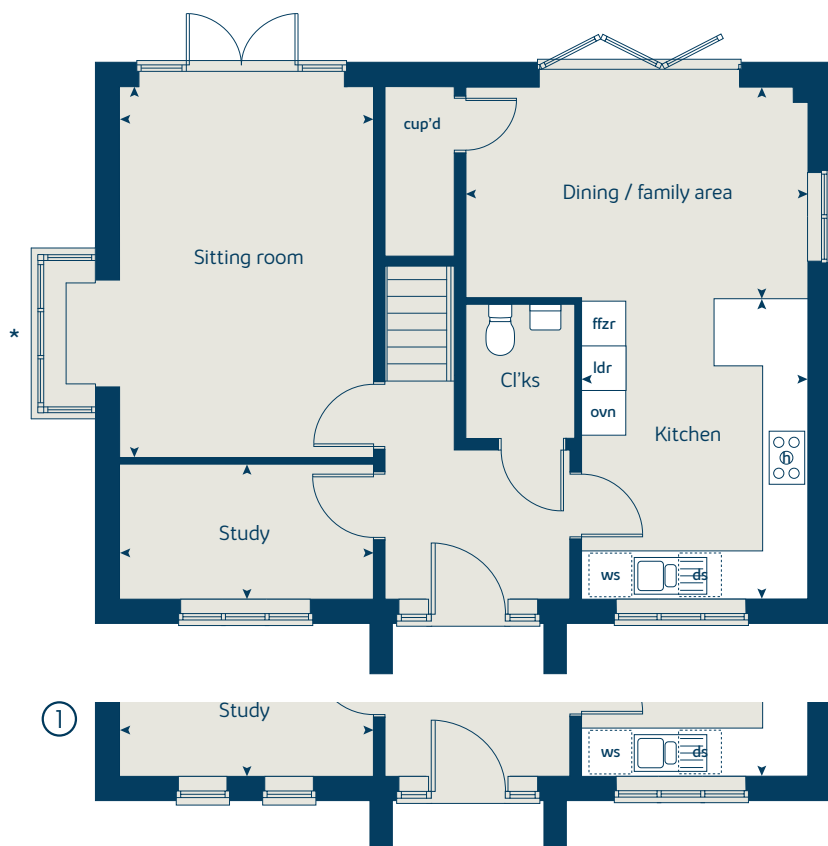
When you have finished with this leaflet please recycle it.

MMJKL DS05561 / 05.23

## First floor



## Ground floor





# The Chestnut II

4 bedroom home

[bovishomes.co.uk](http://bovishomes.co.uk)

**Bovis  
Homes** 



# The Chestnut II

## 4 bedroom home

Ground floor	metres	feet / inches
Kitchen	3.97 x 3.04	13' 0" x 10' 0"
Dining / family area	4.59 x 2.90	15' 1" x 9' 6"
Sitting room	4.95 x 3.40	16' 3" x 11' 2"
Study	3.40 x 1.80	11' 1" x 5' 11"

### First floor

Bedroom 1	4.46 x 3.23	14' 8" x 10' 7"
Bedroom 2	3.42 x 3.35	11' 3" x 11' 0"
Bedroom 3	3.41 x 2.29	11' 2" x 7' 6"
Bedroom 4	3.19 x 2.34	10' 6" x 7' 8"

### The Chestnut II | X413 V4 MMJKL |

This floorplan has been produced for illustrative purposes only. Room sizes shown are between arrow points as indicated on plan. The dimensions have tolerances of + or -50mm and should not be used other than for general guidance. If specific dimensions are required, enquiries should be made to the sales consultant.

\* Window omitted to plots 3, 152 and 168 only. Please see sales consultant for further details.

① Alternative layout applies to plots 3, 152 and 168 only. Please see sales consultant for further details.

ovn	oven	ffzr	fridge freezer
h	hob	ldr	larder
ds	dishwasher space	cup'd	cupboard
ws	washing machine space	◀ ▶	measuring points

Please refer to the sales consultant for specific plot details as the illustrations shown are computer generated impressions of how the property may look so are indicative only. External details or finishes may vary on individual plots and homes may be built in either detached or attached styles depending on the development layout. Exact specifications, window styles and whether a property is left or right handed may differ from plot to plot.

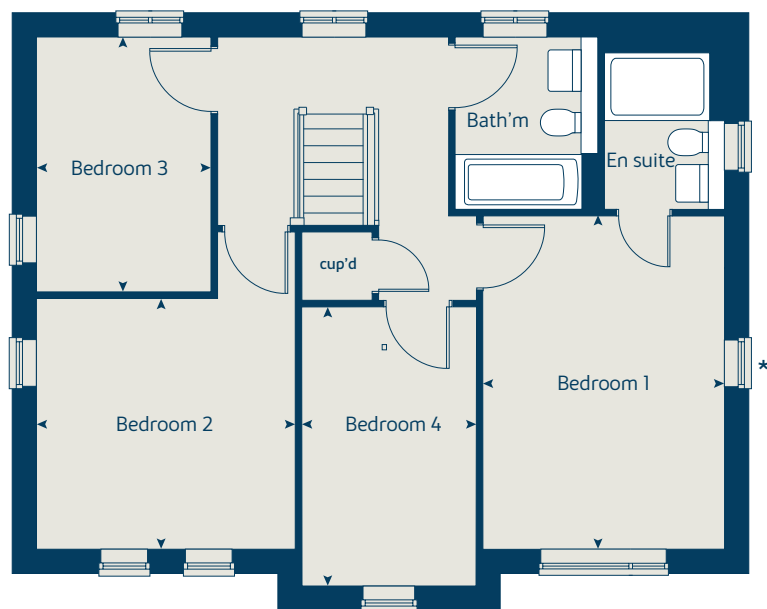
The floorplans shown are not to scale. Measurements are based on the original drawings. Slight variations may occur during construction.

Produced by the Vistry Group Design Studio.

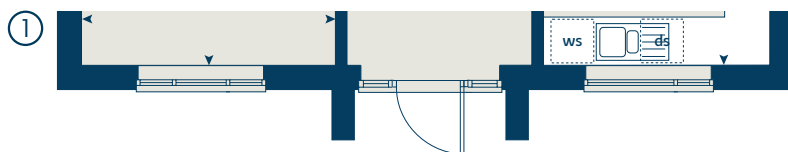
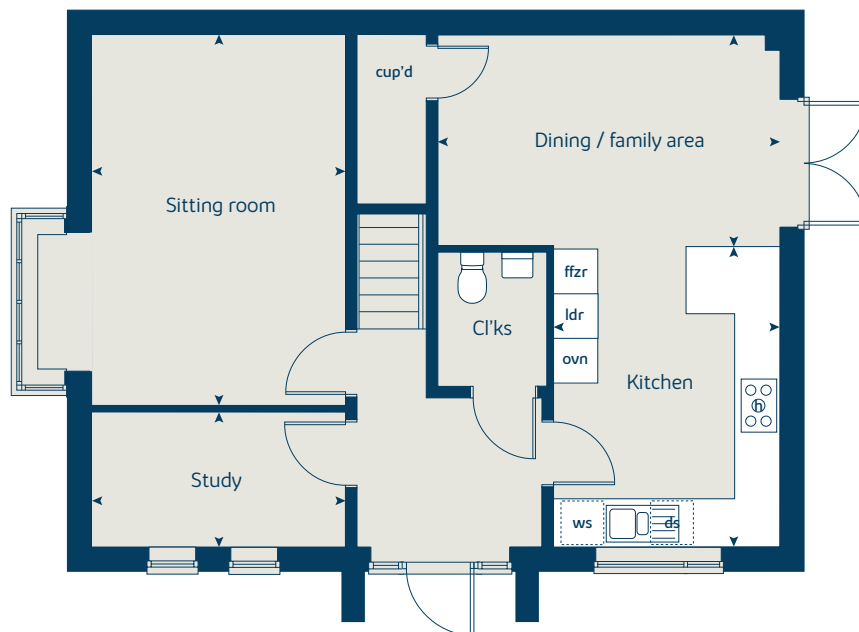
When you have finished with this leaflet please recycle it.

MMJKL DS02671 / 06.22

## First floor



## Ground floor





# The Chestnut II

4 bedroom home

[bovishomes.co.uk](http://bovishomes.co.uk)

**Bovis  
Homes** 



# The Chestnut II

## 4 bedroom home

Ground floor	metres	feet / inches
Kitchen	3.97 x 3.04	13' 0" x 10' 0"
Dining / family area	4.59 x 2.90	15' 1" x 9' 6"
Sitting room	4.95 x 3.40	16' 3" x 11' 2"
Study	3.40 x 1.80	11' 1" x 5' 11"

### First floor

Bedroom 1	4.46 x 3.23	14' 8" x 10' 7"
Bedroom 2	3.42 x 3.35	11' 3" x 11' 0"
Bedroom 3	3.41 x 2.29	11' 2" x 7' 6"
Bedroom 4	3.19 x 2.34	10' 6" x 7' 8"

### The Chestnut II | X413 V4 MMJKL |

This floorplan has been produced for illustrative purposes only. Room sizes shown are between arrow points as indicated on plan. The dimensions have tolerances of + or -50mm and should not be used other than for general guidance. If specific dimensions are required, enquiries should be made to the sales consultant.

\* Window omitted to plots 3, 152 and 168 only. Please see sales consultant for further details.

① Alternative layout applies to plots 3, 152 and 168 only. Please see sales consultant for further details.

ovn	oven	ffzr	fridge freezer
h	hob	ldr	larder
ds	dishwasher space	cup'd	cupboard
ws	washing machine space	◀ ▶	measuring points

Please refer to the sales consultant for specific plot details as the illustrations shown are computer generated impressions of how the property may look so are indicative only. External details or finishes may vary on individual plots and homes may be built in either detached or attached styles depending on the development layout. Exact specifications, window styles and whether a property is left or right handed may differ from plot to plot.

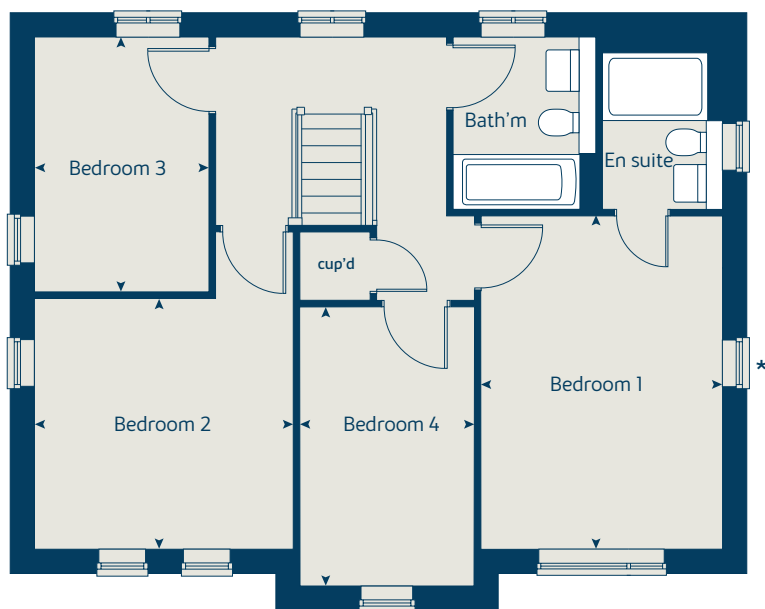
The floorplans shown are not to scale. Measurements are based on the original drawings. Slight variations may occur during construction.

Produced by the Vistry Group Design Studio.

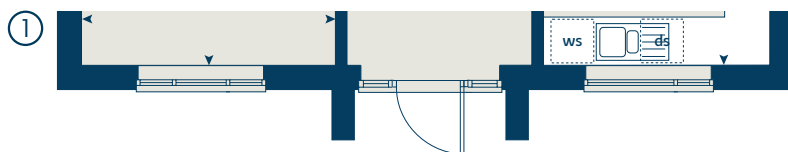
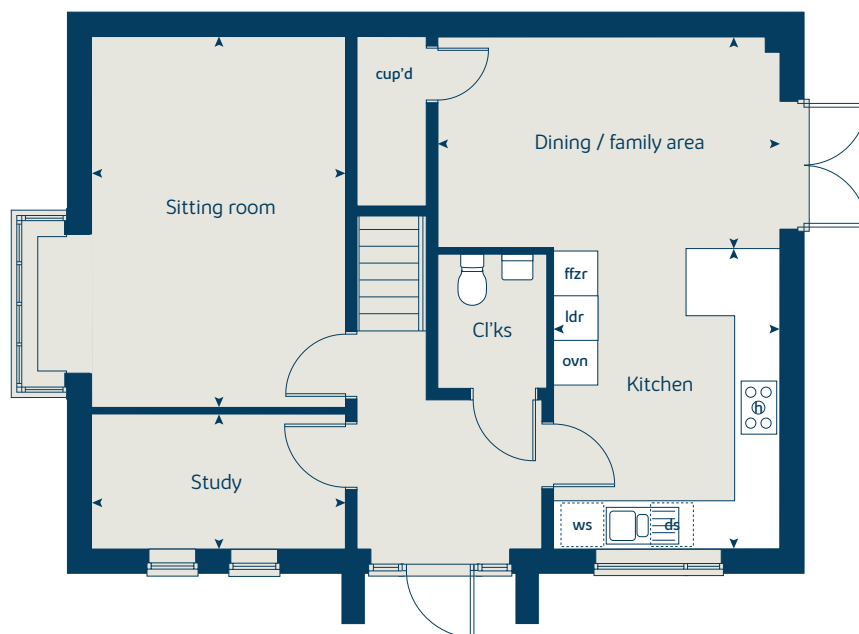
When you have finished with this leaflet please recycle it.

MMJKL DS02671 / 06.22

## First floor



## Ground floor





# The Aspen

4 bedroom home

[bovishomes.co.uk](http://bovishomes.co.uk)

**Bovis  
Homes** 



# The Aspen

## 4 bedroom home

Ground floor	metres	feet / inches
Kitchen / dining area	7.77 x 3.37	25' 6" x 11' 0"
Sitting room	5.04 x 3.39	16' 6" x 11' 1"
Study	2.01 x 2.01	6' 7" x 6' 7"

### First floor

Bedroom 1	4.50 x 3.80	14' 9" x 12' 6"
Bedroom 2	3.86 x 3.09	12' 8" x 10' 2"
Bedroom 3	4.06 x 2.41	13' 4" x 7' 11"
Bedroom 4	3.61 x 2.45	11' 10" x 8' 0"

### The Aspen | X414 (IF) 01 vt MMJKL |

This floorplan has been produced for illustrative purposes only. Room sizes shown are between arrow points as indicated on plan. The dimensions have tolerances of + or -50mm and should not be used other than for general guidance. If specific dimensions are required, enquiries should be made to the sales consultant.

\* Window applies to plot 18 only. Please see sales consultant for further details.

\*\* Window is fixed shut. Please see sales consultant for further details.

ovn	oven	ldr	larder
h	hob	ffzr	fridge freezer
ds	dishwasher space	cup'd	cupboard
ws	washing machine space	< >	measuring points

Please refer to the sales consultant for specific plot details as the illustrations shown are computer generated impressions of how the property may look so are indicative only. External details or finishes may vary on individual plots and homes may be built in either detached or attached styles depending on the development layout. Exact specifications, window styles and whether a property is left or right handed may differ from plot to plot.

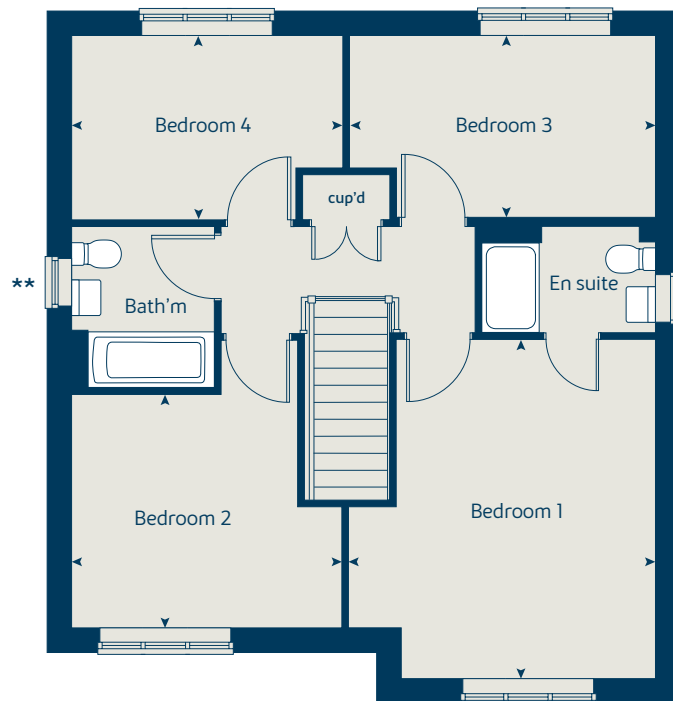
The floorplans shown are not to scale. Measurements are based on the original drawings. Slight variations may occur during construction.

Produced by the Vistry Group Design Studio.

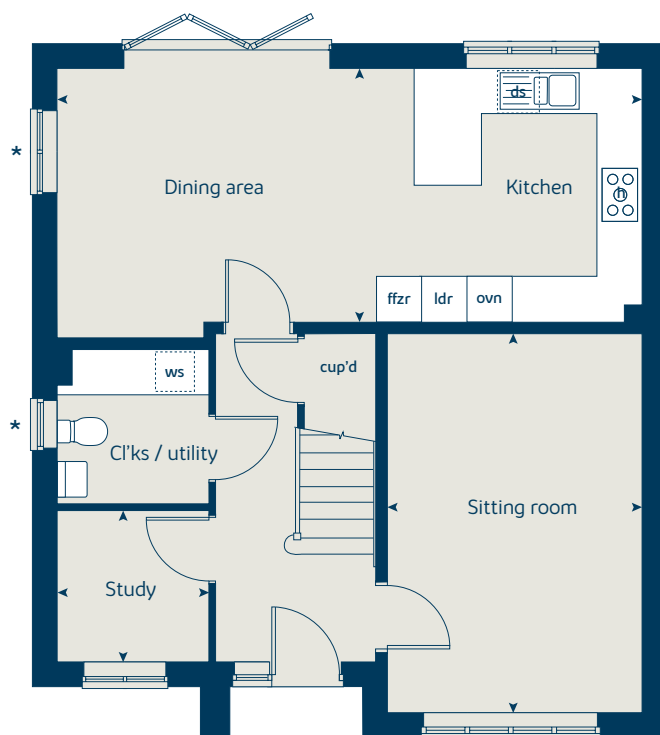
When you have finished with this leaflet please recycle it.

MMJKL DS05561 / 05.23

## First floor



## Ground floor





# The Nash

4 bedroom home

[bovishomes.co.uk](http://bovishomes.co.uk)

**Bovis  
Homes** 

# The Nash

4 bedroom home

Ground floor	metres	feet / inches
Kitchen / dining room	5.41 x 3.60	17' 9" x 11' 10"
Sitting room	4.49 x 4.39	14' 9" x 14' 4"

## First floor

Bedroom 1	3.68 x 3.14	12' 1" x 10' 3"
Bedroom 2	3.76 x 3.01	12' 4" x 9' 10"
Bedroom 3	4.34 x 2.18	14' 2" x 7' 1"
Bedroom 4	2.53 x 2.31	8' 4" x 7' 7"

## The Nash | S426V1 MMJKL |

This floorplan has been produced for illustrative purposes only. Room sizes shown are between arrow points as indicated on plan. The dimensions have tolerances of + or -50mm and should not be used other than for general guidance. If specific dimensions are required, enquiries should be made to the sales consultant.

ovn	oven	ffzs	fridge freezer space
h	hob	cup'd	cupboard
ds	dishwasher space	< >	measuring points
ws	washing machine space		

Please refer to the sales consultant for specific plot details as the illustrations shown are computer generated impressions of how the property may look so are indicative only. External details or finishes may vary on individual plots and homes may be built in either detached or attached styles depending on the development layout. Exact specifications, window styles and whether a property is left or right handed may differ from plot to plot.

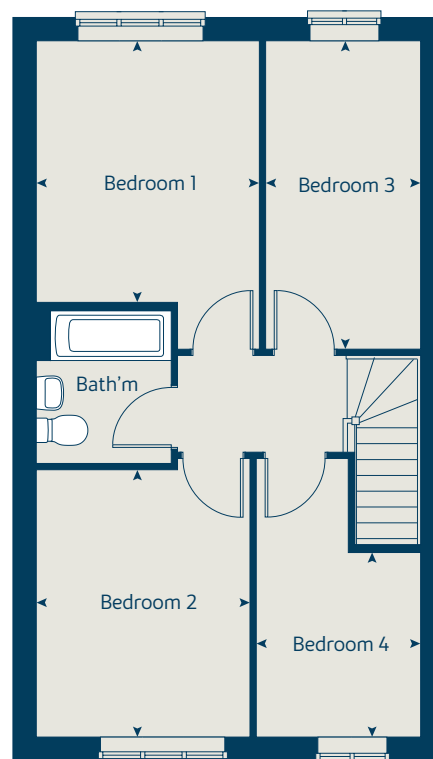
The floorplans shown are not to scale. Measurements are based on the original drawings. Slight variations may occur during construction.

Produced by the Vistry Group Design Studio.

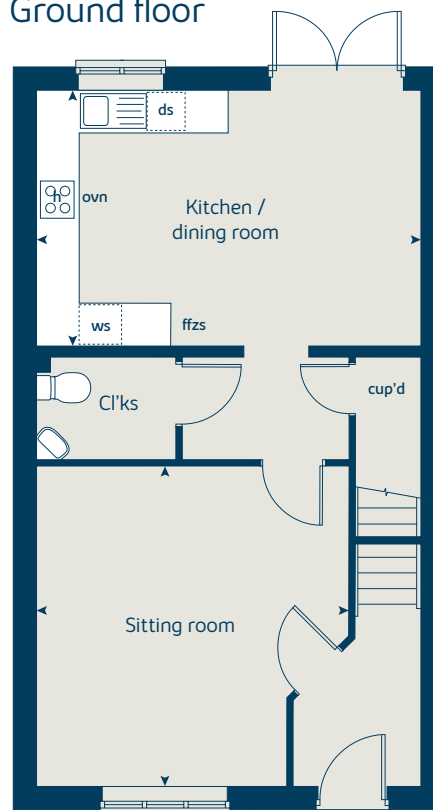
When you have finished with this leaflet please recycle it.

MMJKL DS05561 / 05.23

## First floor



## Ground floor





# Whitehouse Park

## Milton Keynes - Phase 6

### 2 bedroom homes

- The Jasmine
- The Clover - Milton Keynes connected home. Please see sales consultant for further details.

### 3 bedroom homes

- The Hazel
- The Cypress
- The Spruce
- The Spruce II
- The Maritima - Milton Keynes connected home. Please see sales consultant for further details.

### 4 bedroom homes

- The Chestnut
- The Chestnut II
- The Aspen
- The Winchcombe II
- The Violet
- The Maple

### 5 bedroom homes

- The Birch
- The Lime
- The Ascot

### Pre-sold homes

- 2 bedroom home
- 3 bedroom home
- 4 bedroom home

link to Danstead Way

bs bin store  
bcp bin collection point  
cs cycle store



Woodland walk

Existing residential development

This plan has been produced for home identification purposes only and is not to scale. The development layout, landscaping and tenure of all dwellings may be subject to change throughout the course of the development. Finishes and materials may vary from those shown on the plan. Please check the details of your chosen plot and house type with the sales consultant. Development layout plan correct at time of production.



## So much choice...

Part of the excitement of buying a new home is the thrill of being the first person to live in the property and having a brand new contemporary kitchen and modern bathroom. Our premium brand partners ensure that all of our fixtures and fittings comply with the latest Government building regulations and only branded appliances are installed in your new home.

Once you know what specification comes included, you'll have a choice from our specially selected tiles for your kitchen and bathrooms, as well as kitchen worktops and cupboard doors. You can then use the Bovis Homes **Select** brochure to add the finishing touches to your home to make it extra special for you!

From personalising your bathrooms with stunning ceramics, or adding smooth sliding wardrobes to your master bedroom, there are a wide range of additional options and upgrades available.

The availability of items is subject to the stage of build, and can vary by development and house type. Our sales consultants will be happy to provide guidance.



## Whitehouse Park

Milton Keynes - Phase 6

The specification shown in this leaflet is correct at the time of going to press. Bovis Homes is continually reviewing and updating the specification on all housetypes and therefore reserves the right to change specification details. Photographs depict a typical Bovis Homes interior and may include optional upgrades. For full details regarding current specification and finishes, for the plots you are interested in, please refer to our sales consultant.

Produced by the Vistry Group Design Studio.

When you have finished with this leaflet please recycle it.

170-MILT Phase 6 DS09976 / 04.24



Specification

[bovishomes.co.uk](http://bovishomes.co.uk)







# The Jasmine

2 bedroom home

[bovishomes.co.uk](http://bovishomes.co.uk)

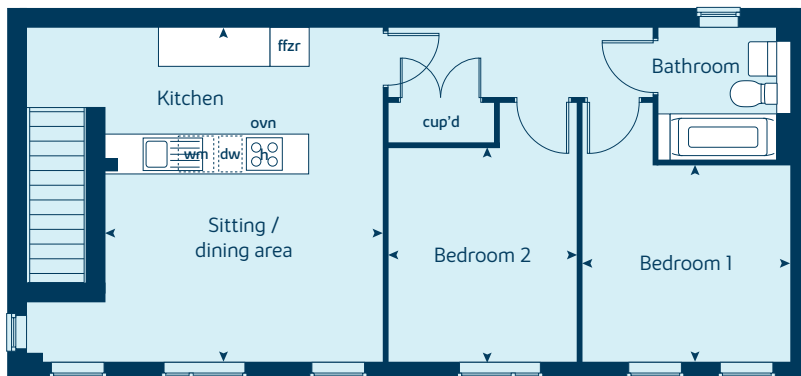
**Bovis  
Homes** 



# The Jasmine

## 2 bedroom home

### First floor



Plots 571 and 573

#### Plots 571 and 573

Kitchen / sitting / dining area	5.30 x 4.37	17' 5" x 14' 4"
Bedroom 1	3.30 x 3.14	10' 10" x 10' 4"
Bedroom 2	3.41 x 3.01	11' 2" x 9' 11"

#### Plots 570 and 572

metres feet / inches

Kitchen / sitting / dining area	5.30 x 4.42	17' 5" x 14' 6"
Bedroom 1	3.56 x 3.30	11' 8" x 10' 10"
Bedroom 2	3.56 x 2.96	11' 8" x 9' 9"

#### The Jasmine | 2BFP MMILT |

This floorplan has been produced for illustrative purposes only. Room sizes shown are between arrow points as indicated on plan. The dimensions have tolerances of + or -50mm and should not be used other than for general guidance. If specific dimensions are required, enquiries should be made to the sales consultant.

ovn	oven	ffzr	fridge freezer
h	hob	cup'd	cupboard
wm	washing machine	◀ ▶	measuring points
dw	slimline dishwasher		

Please refer to the sales consultant for specific plot details as the illustrations shown are computer generated impressions of how the property may look so are indicative only. External details or finishes may vary on individual plots and homes may be built in either detached or attached styles depending on the development layout. Exact specifications, window styles and whether a property is left or right handed may differ from plot to plot.

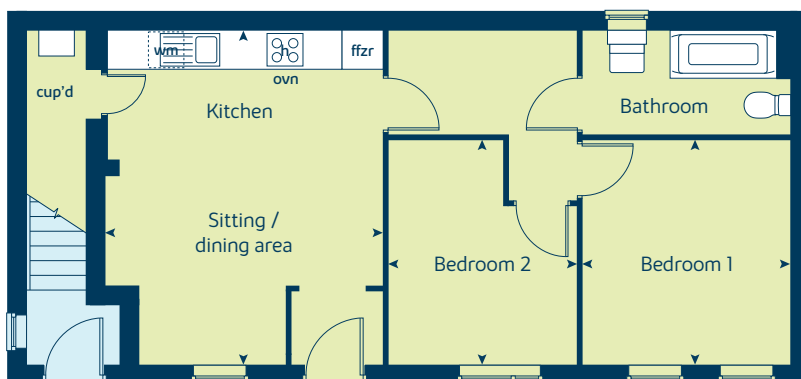
The floorplans shown are not to scale. Measurements are based on the original drawings. Slight variations may occur during construction.

Produced by the Vistry Group Design Studio.

When you have finished with this leaflet please recycle it.

170-MILT Phase 6 DS11126 / 07.24

### Ground floor



Plots 570 and 572



# The Hazel

3 bedroom home

[bovishomes.co.uk](http://bovishomes.co.uk)



# The Hazel

## 3 bedroom home

Ground floor	metres	feet / inches
Kitchen / dining area	5.19 x 2.99	17' 0" x 9' 9"
Sitting room	4.17 x 3.66	13' 8" x 12' 0"

### First floor

Bedroom 1	3.54 x 2.97	11' 7" x 9' 8"
Bedroom 2	3.04 x 2.95	9' 11" x 9' 8"
Bedroom 3	2.44 x 2.07	8' 0" x 6' 9"

### The Hazel | X305 P5 vt MMILT |

This floorplan has been produced for illustrative purposes only. Room sizes shown are between arrow points as indicated on plan. The dimensions have tolerances of + or -50mm and should not be used other than for general guidance. If specific dimensions are required, enquiries should be made to the sales consultant.

\* Windows apply to selected plots only. Please see sales consultant for further details.

① Alternative window layouts apply to selected plots only. Please see sales consultant for further details.

ovn	oven	ffzs	fridge freezer space
h	hob	w	wardrobe
ds	dishwasher space	cup'd	cupboard
ws	washing machine space	◀ ▶	measuring points

Please refer to the sales consultant for specific plot details as the illustrations shown are computer generated impressions of how the property may look so are indicative only. External details or finishes may vary on individual plots and homes may be built in either detached or attached styles depending on the development layout. Exact specifications, window styles and whether a property is left or right handed may differ from plot to plot.

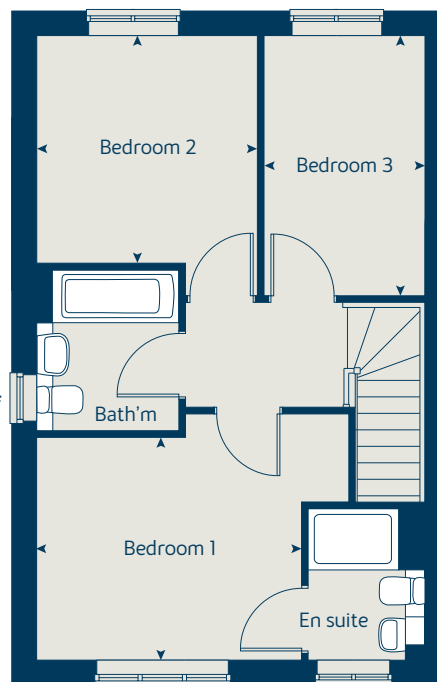
The floorplans shown are not to scale. Measurements are based on the original drawings. Slight variations may occur during construction.

Produced by the Vistry Group Design Studio.

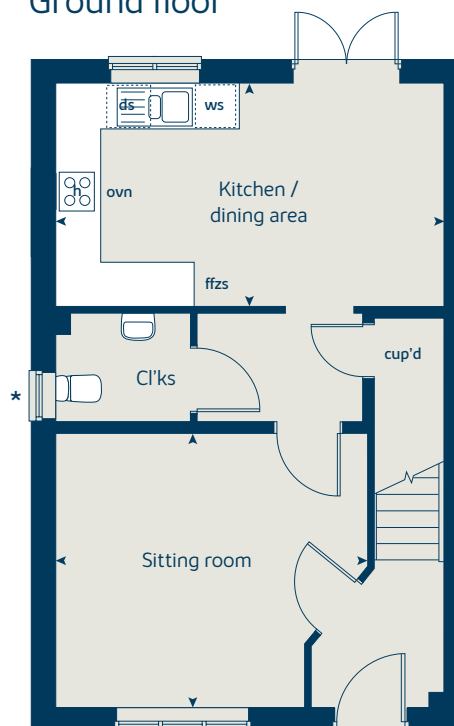
When you have finished with this leaflet please recycle it.

170-MILT Phase 6 DS05009 / 02.23

## First floor



## Ground floor







# The Cypress

3 bedroom home

[bovishomes.co.uk](http://bovishomes.co.uk)

**Bovis  
Homes** 

# The Cypress

3 bedroom home

Ground floor	metres	feet / inches
Kitchen / dining area	5.52 x 3.12	18' 1" x 10' 3"
Sitting room	4.29 x 3.40	14' 1" x 11' 2"

## First floor

Bedroom 1	3.26 x 2.97	10' 8" x 9' 9"
Bedroom 2	3.95 x 3.28	13' 0" x 10' 9"
Bedroom 3	3.54 x 2.16	11' 7" x 7' 1"

## The Cypress | X308 (IF) P7 vt MMILT |

This floorplan has been produced for illustrative purposes only. Room sizes shown are between arrow points as indicated on plan. The dimensions have tolerances of + or -50mm and should not be used other than for general guidance. If specific dimensions are required, enquiries should be made to the sales consultant.

ovn	oven	ffzs	fridge freezer space
h	hob	cup'd	cupboard
ds	dishwasher space	◀ ▶	measuring points
ws	washing machine space		

Please refer to the sales consultant for specific plot details as the illustrations shown are computer generated impressions of how the property may look so are indicative only. External details or finishes may vary on individual plots and homes may be built in either detached or attached styles depending on the development layout. Exact specifications, window styles and whether a property is left or right handed may differ from plot to plot.

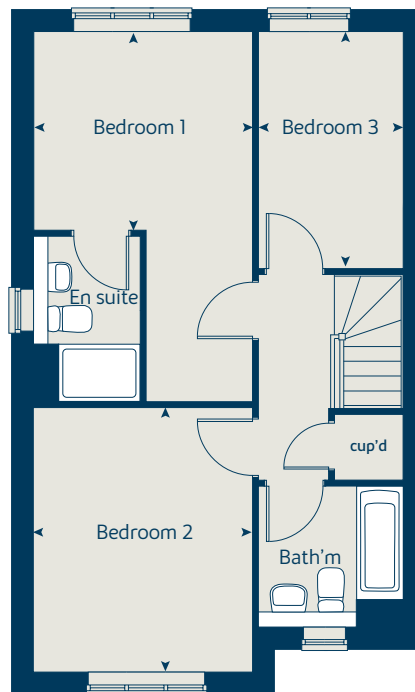
The floorplans shown are not to scale. Measurements are based on the original drawings. Slight variations may occur during construction.

Produced by the Vistry Group Design Studio.

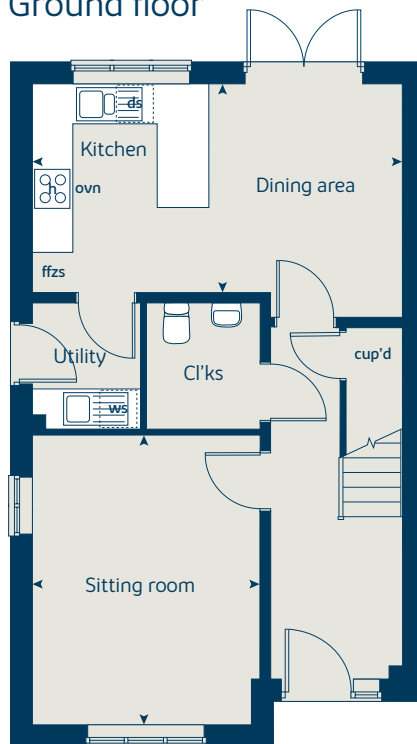
When you have finished with this leaflet please recycle it.

170-MILT Phase 6 DS05009 / 02.23

## First floor



## Ground floor







# The Spruce

3 bedroom home

[bovishomes.co.uk](http://bovishomes.co.uk)

**Bovis  
Homes** 





# The Maritima

3 bedroom home

[bovishomes.co.uk](http://bovishomes.co.uk)

**Bovis  
Homes** 

# The Maritima

## 3 bedroom home

Ground floor	metres	feet / inches
Kitchen	3.51 x 2.48	11' 6" x 8' 2"
Sitting room	4.52 x 4.42	14' 10" x 14' 6"

### First floor

Bedroom 1	4.52 x 2.50	14' 10" x 8' 3"
Bedroom 2	4.32 x 2.18	14' 2" x 7' 2"
Bedroom 3	3.26 x 2.23	10' 8" x 7' 4"

### The Maritima | S351 MMILT |

This floorplan has been produced for illustrative purposes only. Room sizes shown are between arrow points as indicated on plan. The dimensions have tolerances of + or -50mm and should not be used other than for general guidance. If specific dimensions are required, enquiries should be made to the sales consultant.

ovn	oven	ffzs	fridge freezer space
h	hob	cup'd	cupboard
ds	dishwasher space	◀ ▶	measuring points
ws	washing machine space		

Please refer to the sales consultant for specific plot details as the illustrations shown are computer generated impressions of how the property may look so are indicative only. External details or finishes may vary on individual plots and homes may be built in either detached or attached styles depending on the development layout. Exact specifications, window styles and whether a property is left or right handed may differ from plot to plot.

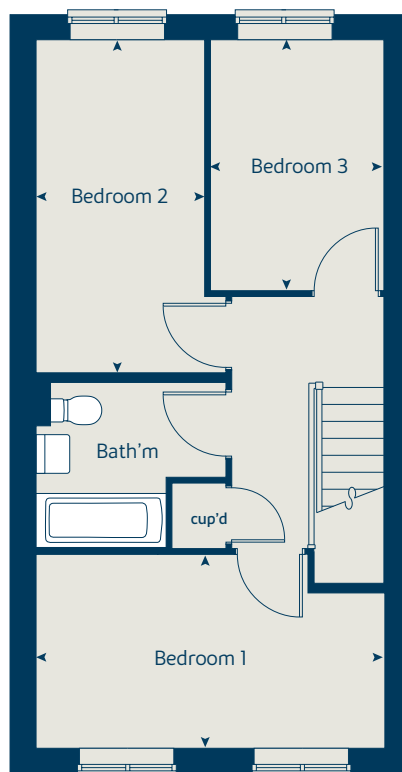
The floorplans shown are not to scale. Measurements are based on the original drawings. Slight variations may occur during construction.

Produced by the Vistry Group Design Studio.

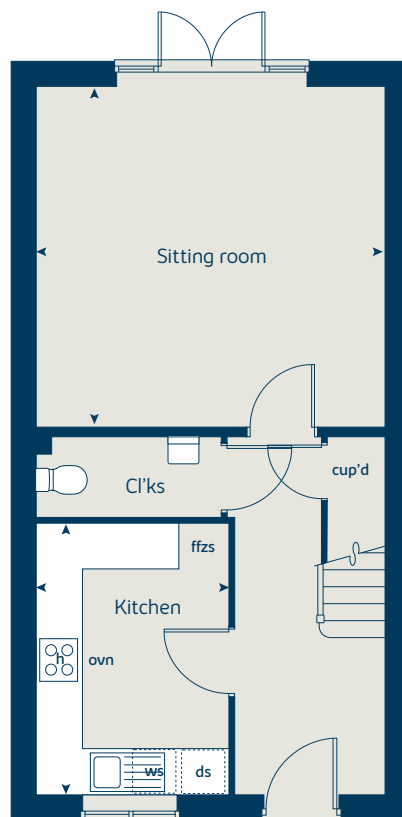
When you have finished with this leaflet please recycle it.

MMILT DS11014 / 06.24

### First floor



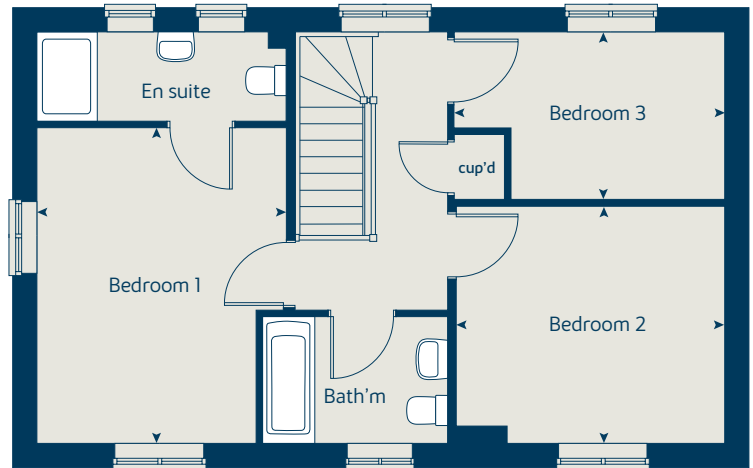
### Ground floor



# The Spruce

3 bedroom home

## First floor



Ground floor	metres	feet / inches
Kitchen / dining area	5.53 x 3.55	18' 2" x 11' 8"
Sitting room	5.53 x 3.32	18' 2" x 10' 11"

### First floor

Bedroom 1	4.26 x 3.40	14' 0" x 11' 2"
Bedroom 2	3.59 x 3.17	11' 10" x 10' 5"
Bedroom 3	3.59 x 2.24	11' 10" x 7' 4"

### The Spruce | X307 (IF) 01 MMILT |

This floorplan has been produced for illustrative purposes only. Room sizes shown are between arrow points as indicated on plan. The dimensions have tolerances of + or -50mm and should not be used other than for general guidance. If specific dimensions are required, enquiries should be made to the sales consultant.

ovn	oven	ffzs	fridge freezer space
h	hob	cup'd	cupboard
ds	dishwasher space	◀ ▶	measuring points
ws	washing machine space		

Please refer to the sales consultant for specific plot details as the illustrations shown are computer generated impressions of how the property may look so are indicative only. External details or finishes may vary on individual plots and homes may be built in either detached or attached styles depending on the development layout. Exact specifications, window styles and whether a property is left or right handed may differ from plot to plot.

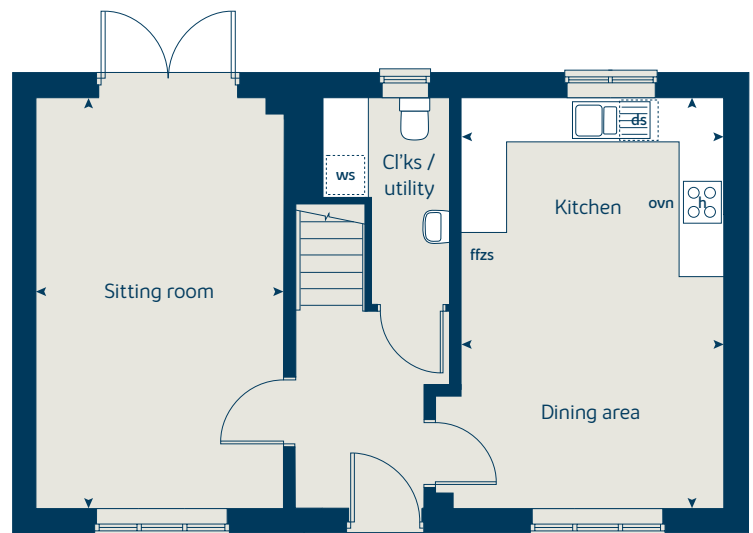
The floorplans shown are not to scale. Measurements are based on the original drawings. Slight variations may occur during construction.

Produced by the Vistry Group Design Studio.

When you have finished with this leaflet please recycle it.

170-MILT Phase 6 DS05009 / 02.23

## Ground floor







# The Spruce II

3 bedroom home

[bovishomes.co.uk](http://bovishomes.co.uk)

**Bovis  
Homes** 

# The Spruce II

## 3 bedroom home

Ground floor	metres	feet / inches
Kitchen / dining area	5.53 x 3.55	18' 2" x 11' 8"
Sitting room	5.53 x 3.32	18' 2" x 10' 11"

### First floor

Bedroom 1	4.21 x 2.90	13' 10" x 9' 6"
Bedroom 2	3.59 x 3.17	11' 10" x 10' 5"
Bedroom 3	3.59 x 2.29	11' 10" x 7' 6"

### The Spruce II | X307 (IF) P6 vt MMILT |

This floorplan has been produced for illustrative purposes only. Room sizes shown are between arrow points as indicated on plan. The dimensions have tolerances of + or -50mm and should not be used other than for general guidance. If specific dimensions are required, enquiries should be made to the sales consultant.

\* Windows apply to selected plots only. Please see sales consultant for further details.

① Alternative side window layout applies to selected plots only. Please see sales consultant for further details.

ovn	oven	ffzs	fridge freezer space
h	hob	cup'd	cupboard
ds	dishwasher space	◀ ▶	measuring points
ws	washing machine space		

Please refer to the sales consultant for specific plot details as the illustrations shown are computer generated impressions of how the property may look so are indicative only. External details or finishes may vary on individual plots and homes may be built in either detached or attached styles depending on the development layout. Exact specifications, window styles and whether a property is left or right handed may differ from plot to plot.

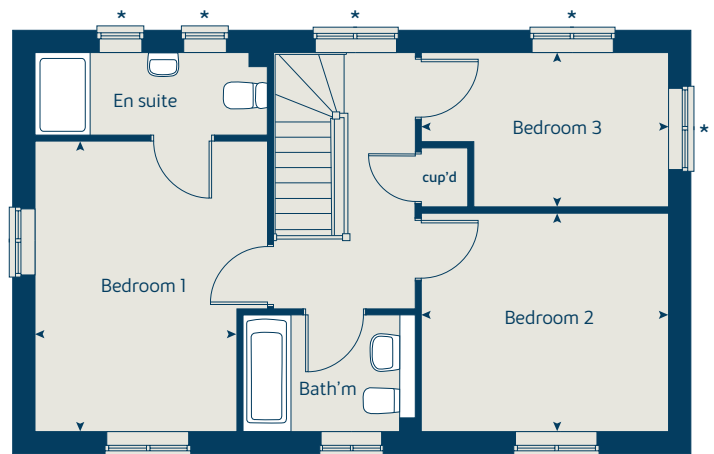
The floorplans shown are not to scale. Measurements are based on the original drawings. Slight variations may occur during construction.

Produced by the Vistry Group Design Studio.

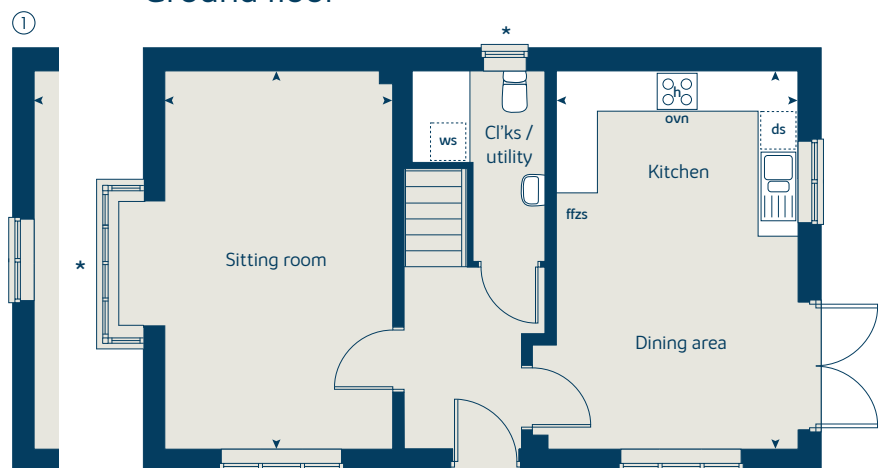
When you have finished with this leaflet please recycle it.

170-MILT Phase 6 DS05009 / 02.23

### First floor



### Ground floor







# The Chestnut

4 bedroom home

[bovishomes.co.uk](http://bovishomes.co.uk)

**Bovis  
Homes** 



# The Chestnut

## 4 bedroom home

Ground floor	metres	feet / inches
Kitchen	4.03 x 3.34	13' 2" x 10' 11"
Dining / family area	4.59 x 2.85	15' 0" x 9' 4"
Sitting room	4.98 x 3.40	16' 4" x 11' 1"
Study	3.40 x 1.81	11' 1" x 5' 11"

### First floor

Bedroom 1	4.48 x 3.24	14' 8" x 10' 7"
Bedroom 2	3.48 x 3.36	11' 5" x 11' 0"
Bedroom 3	3.25 x 2.29	10' 7" x 7' 6"
Bedroom 4	3.42 x 2.34	11' 2" x 7' 8"

### The Chestnut | X413 P5 vt MMILT |

This floorplan has been produced for illustrative purposes only. Room sizes shown are between arrow points as indicated on plan. The dimensions have tolerances of + or -50mm and should not be used other than for general guidance. If specific dimensions are required, enquiries should be made to the sales consultant.

\* Windows apply to selected plots only. Please see sales consultant for further details.

① Alternative window layouts apply to selected plots only. Please see sales consultant for further details.

ovn	oven	ffzr	fridge freezer
h	hob	w	wardrobe
ds	dishwasher space	cup'd	cupboard
ws	washing machine space	◀ ▶	measuring points

Please refer to the sales consultant for specific plot details as the illustrations shown are computer generated impressions of how the property may look so are indicative only. External details or finishes may vary on individual plots and homes may be built in either detached or attached styles depending on the development layout. Exact specifications, window styles and whether a property is left or right handed may differ from plot to plot.

The floorplans shown are not to scale. Measurements are based on the original drawings. Slight variations may occur during construction.

Produced by the Vistry Group Design Studio.

When you have finished with this leaflet please recycle it.

170-MILT Phase 6 DS05009 / 02.23

### First floor



### Ground floor





# The Chestnut II

4 bedroom home

[bovishomes.co.uk](http://bovishomes.co.uk)

**Bovis  
Homes** 

# The Chestnut II

## 4 bedroom home

Ground floor	metres	feet / inches
Kitchen	4.03 x 3.34	13' 2" x 10' 11"
Dining / family area	4.59 x 2.85	15' 0" x 9' 4"
Sitting room	4.98 x 3.40	16' 4" x 11' 1"
Study	3.40 x 1.81	11' 1" x 5' 11"

### First floor

Bedroom 1	4.48 x 3.24	14' 8" x 10' 7"
Bedroom 2	3.48 x 3.36	11' 5" x 11' 0"
Bedroom 3	3.25 x 2.29	10' 7" x 7' 6"
Bedroom 4	3.42 x 2.34	11' 2" x 7' 8"

### The Chestnut II | X413V MMILT |

This floorplan has been produced for illustrative purposes only. Room sizes shown are between arrow points as indicated on plan. The dimensions have tolerances of + or -50mm and should not be used other than for general guidance. If specific dimensions are required, enquiries should be made to the sales consultant.

\* Bay window applies to selected plots only. Please see sales consultant for further details.

\*\* Window size may vary. Please see sales consultant for further details.

① Alternative window layouts apply to selected plots only. Please see sales consultant for further details.

ovn	oven	ffzr	fridge freezer
h	hob	cup'd	cupboard
ds	dishwasher space	<>	measuring points
ws	washing machine space		

Please refer to the sales consultant for specific plot details as the illustrations shown are computer generated impressions of how the property may look so are indicative only. External details or finishes may vary on individual plots and homes may be built in either detached or attached styles depending on the development layout. Exact specifications, window styles and whether a property is left or right handed may differ from plot to plot.

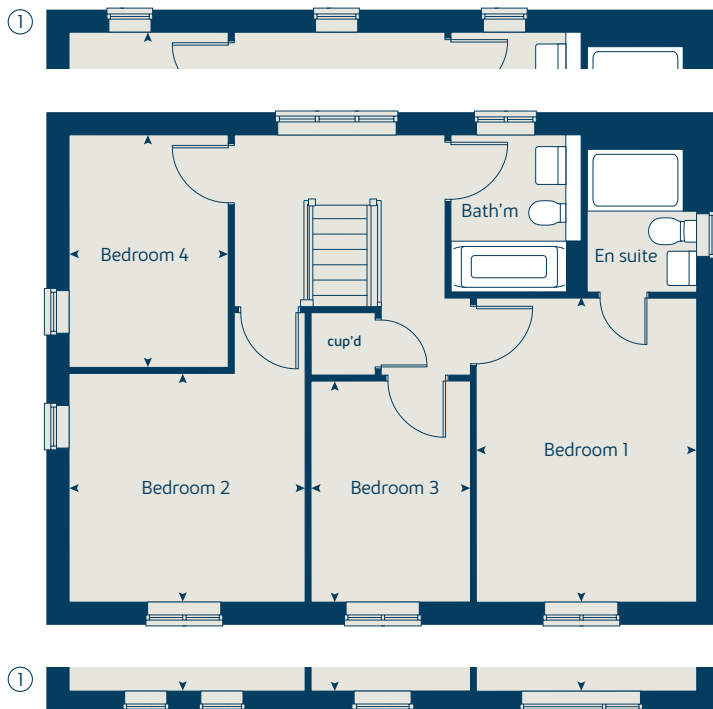
The floorplans shown are not to scale. Measurements are based on the original drawings. Slight variations may occur during construction.

Produced by the Vistry Group Design Studio.

When you have finished with this leaflet please recycle it.

170-MILT Phase 6 DS05009 / 02.23

### First floor



### Ground floor







# The Maple

4 bedroom home

[bovishomes.co.uk](http://bovishomes.co.uk)

**Bovis  
Homes** 

# The Maple

## 4 bedroom home

Ground floor	metres	feet / inches
Kitchen	3.58 x 3.55	11' 9" x 11' 8"
Family / dining area	7.30 x 3.25	23' 11" x 10' 8"
Sitting room	4.50 x 3.54	14' 9" x 11' 7"
Study	2.54 x 2.33	8' 4" x 7' 8"

### First floor

Bedroom 1	3.60 x 3.55	11' 10" x 11' 8"
Bedroom 2	3.71 x 3.60	12' 2" x 11' 10"
Bedroom 3	4.18 x 2.90	13' 9" x 9' 6"
Bedroom 4	2.90 x 2.90	9' 6" x 9' 6"

### The Maple | X416 P5 vt MMILT |

This floorplan has been produced for illustrative purposes only. Room sizes shown are between arrow points as indicated on plan. The dimensions have tolerances of + or -50mm and should not be used other than for general guidance. If specific dimensions are required, enquiries should be made to the sales consultant.

\* Windows apply to selected plots only. Please see sales consultant for further details.

\*\* Windows may vary in size. Please see sales consultant for further details.

① Alternative window layouts apply to selected plots only. Please see sales consultant for further details.

ovn	oven	ffzr	fridge freezer
h	hob	cyl	hot water cylinder
dw	dishwasher	cup'd	cupboard
ws	washing machine space	◀ ▶	measuring points

Please refer to the sales consultant for specific plot details as the illustrations shown are computer generated impressions of how the property may look so are indicative only. External details or finishes may vary on individual plots and homes may be built in either detached or attached styles depending on the development layout. Exact specifications, window styles and whether a property is left or right handed may differ from plot to plot.

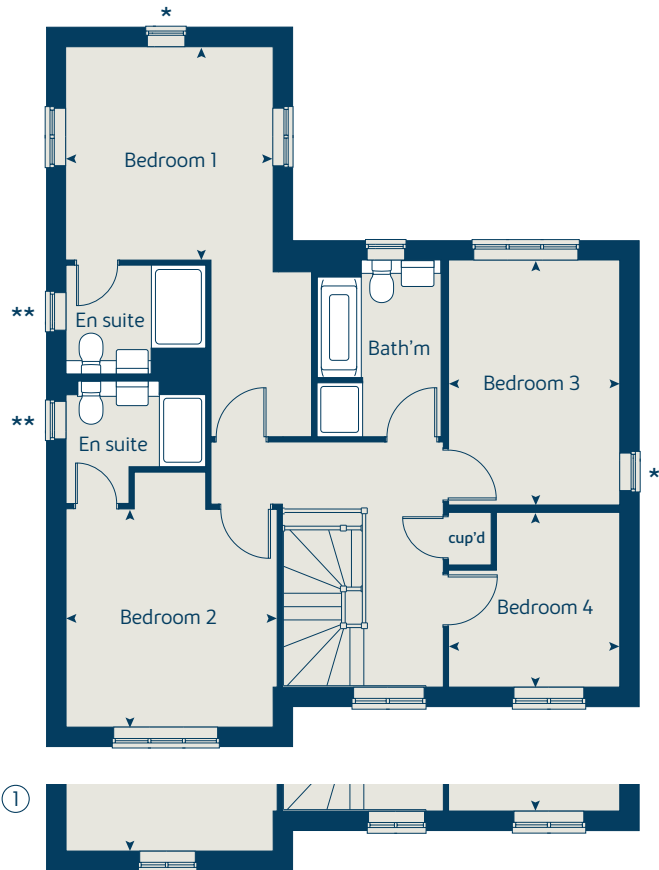
The floorplans shown are not to scale. Measurements are based on the original drawings. Slight variations may occur during construction.

Produced by the Vistry Group Design Studio.

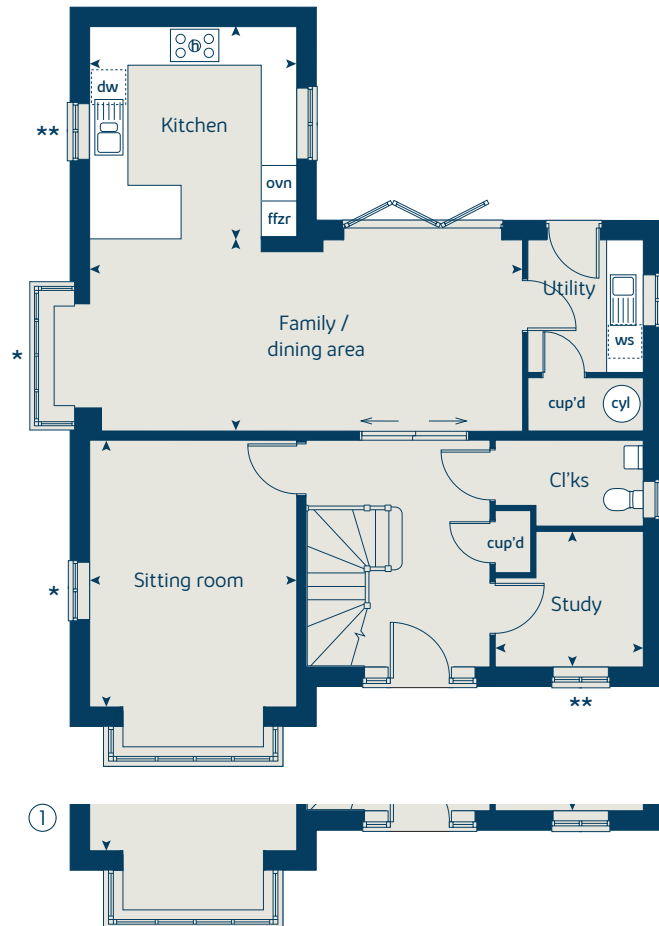
When you have finished with this leaflet please recycle it.

170-MILT Phase 6 DS05009 / 02.23

## First floor



## Ground floor







# The Violet

4 bedroom home

[bovishomes.co.uk](http://bovishomes.co.uk)

**Bovis  
Homes** 



# The Violet

## 4 bedroom home

Ground floor	metres	feet / inches
Kitchen / family area	8.00 x 3.66	26' 3" x 12' 0"
Sitting room	4.22 x 4.17	13' 10" x 13' 8"
Study	2.69 x 2.01	8' 10" x 6' 7"

### First floor

Bedroom 1	4.17 x 3.81	13' 8" x 12' 6"
Bedroom 2	4.46 x 3.71	14' 8" x 12' 2"
Bedroom 3	3.71 x 3.43	12' 2" x 11' 3"
Bedroom 4	3.67 x 2.69	12' 1" x 8' 10"

### The Violet | 16004BNHC MMILT |

This floorplan has been produced for illustrative purposes only. Room sizes shown are between arrow points as indicated on plan. The dimensions have tolerances of + or -50mm and should not be used other than for general guidance. If specific dimensions are required, enquiries should be made to the sales consultant.

\* Window size may vary. Please see sales consultant for further details.

① Alternative window layouts apply to selected plots only. Please see sales consultant for further details.

② Utility door omitted to plots 548, 552 and 553. Please see sales consultant for further details.

ovn	oven	ffzr	fridge freezer
h	hob	cup'd	cupboard
ds	dishwasher space	◀ ▶	measuring points
ws	washing machine space		

Please refer to the sales consultant for specific plot details as the illustrations shown are computer generated impressions of how the property may look so are indicative only. External details or finishes may vary on individual plots and homes may be built in either detached or attached styles depending on the development layout. Exact specifications, window styles and whether a property is left or right handed may differ from plot to plot.

The floorplans shown are not to scale. Measurements are based on the original drawings. Slight variations may occur during construction.

Produced by the Vistry Group Design Studio.

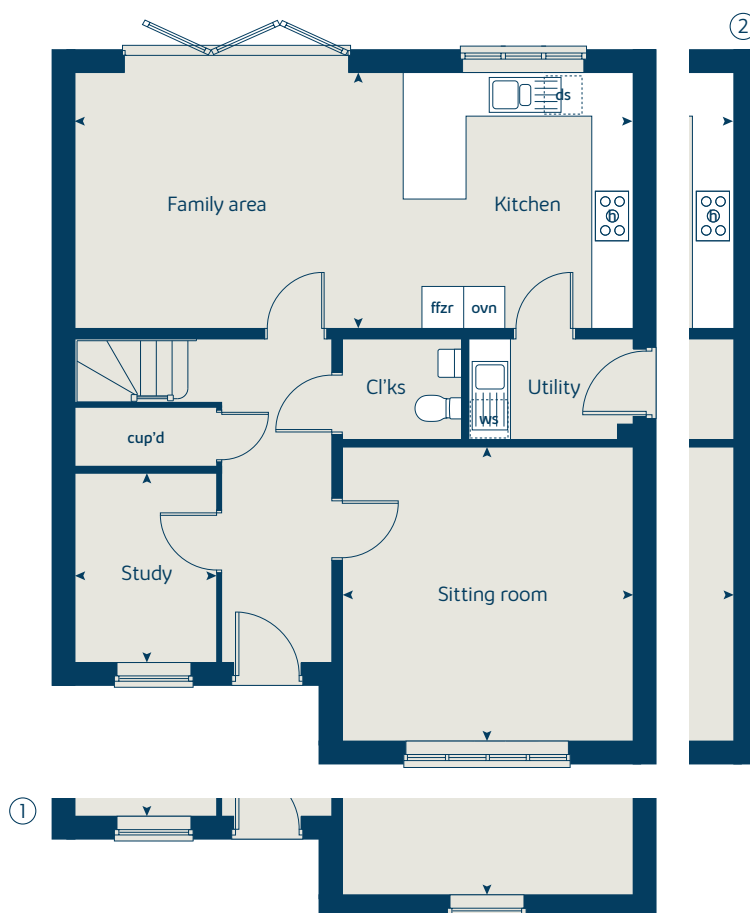
When you have finished with this leaflet please recycle it.

170-MILT Phase 6 DS05009 / 02.23

### First floor



### Ground floor





# The Birch

5 bedroom home

[bovishomes.co.uk](http://bovishomes.co.uk)

**Bovis  
Homes** 

# The Birch

## 5 bedroom home

Ground floor	metres	feet / inches
Kitchen	4.54 x 3.71	14' 11" x 12' 2"
Family / dining area	5.42 x 3.51	17' 9" x 11' 6"
Sitting room	4.17 x 3.61	13' 8" x 11' 10"
Study / dining room	3.41 x 3.00	11' 2" x 9' 10"

### First floor

Bedroom 1	3.62 x 3.51	11' 10" x 11' 6"
Bedroom 2	3.92 x 2.90	12' 9" x 9' 6"
Bedroom 3	3.06 x 2.82	10' 0" x 9' 3"
Bedroom 4	2.98 x 2.83	9' 9" x 9' 3"
Bedroom 5	3.00 x 2.83	9' 10" x 9' 3"

### The Birch | X518 (IF) P5 vt MMLT |

This floorplan has been produced for illustrative purposes only. Room sizes shown are between arrow points as indicated on plan. The dimensions have tolerances of + or -50mm and should not be used other than for general guidance. If specific dimensions are required, enquiries should be made to the sales consultant.

\* Door and windows apply to selected plots only. Please see sales consultant for further details.

ovn	oven	ffzr	fridge freezer
h	hob	cyl	hot water cylinder
dw	dishwasher	cup'd	cupboard
ws	washing machine space	<>	measuring points

Please refer to the sales consultant for specific plot details as the illustrations shown are computer generated impressions of how the property may look so are indicative only. External details or finishes may vary on individual plots and homes may be built in either detached or attached styles depending on the development layout. Exact specifications, window styles and whether a property is left or right handed may differ from plot to plot.

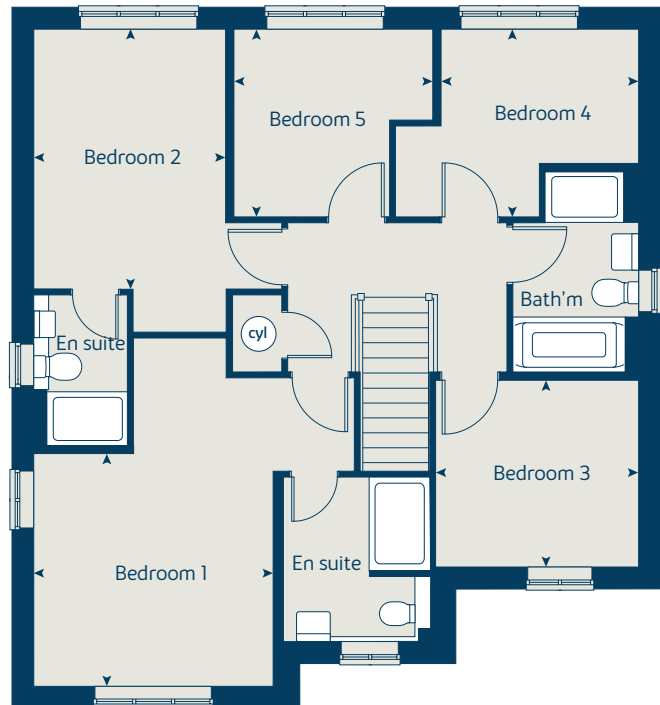
The floorplans shown are not to scale. Measurements are based on the original drawings. Slight variations may occur during construction.

Produced by the Vistry Group Design Studio.

When you have finished with this leaflet please recycle it.

170-MILT Phase 6 DS05009 / 02.23

### First floor



### Ground floor







# The Lime

5 bedroom home

[bovishomes.co.uk](http://bovishomes.co.uk)



# The Lime

## 5 bedroom home

Ground floor	metres	feet / inches
Kitchen / Family / dining area	7.69 x 3.58	25' 3" x 11' 9"
Sitting room	5.39 x 3.86	17' 8" x 12' 7"
Dining room	3.86 x 2.78	12' 7" x 9' 1"
Study	3.58 x 2.55	11' 8" x 8' 4"

First floor	metres	feet / inches
Bedroom 1	4.05 x 3.76	13' 3" x 12' 3"
Bedroom 2	4.05 x 3.52	13' 3" x 11' 6"
Bedroom 3	3.26 x 3.24	10' 7" x 10' 6"
Bedroom 4	3.55 x 2.26	11' 7" x 7' 4"
Bedroom 5	2.83 x 2.64	9' 3" x 8' 7"

### The Lime | X520 (IF) P6 vt MMILT |

This floorplan has been produced for illustrative purposes only. Room sizes shown are between arrow points as indicated on plan. The dimensions have tolerances of + or -50mm and should not be used other than for general guidance. If specific dimensions required, enquiries should be made to the sales consultant.

- \* Window omitted to plot 594 only. Please see sales consultant for further details.
- \*\* Window omitted to plot 563 only. Please see sales consultant or further details.

ovn	oven	ffzr	fridge freezer
h	hob	cyl	hot water cylinder
dw	dishwasher	cup'd	cupboard
ws	washing machine space	< >	measuring points

Please refer to the sales consultant for specific plot details as the illustrations shown are computer generated impressions of how the property may look so are indicative only. External details or finishes may vary on individual plots and homes may be built in either detached or attached styles depending on the development layout. Exact specifications, window styles and whether a property is left or right handed may differ from plot to plot.

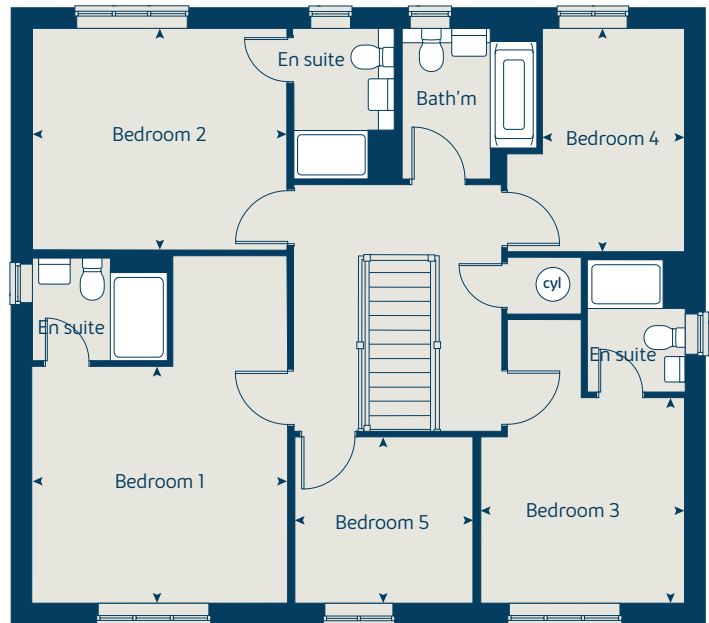
The floorplans shown are not to scale. Measurements are based on the original drawings. Slight variations may occur during construction.

Produced by the Vistry Group Design Studio.

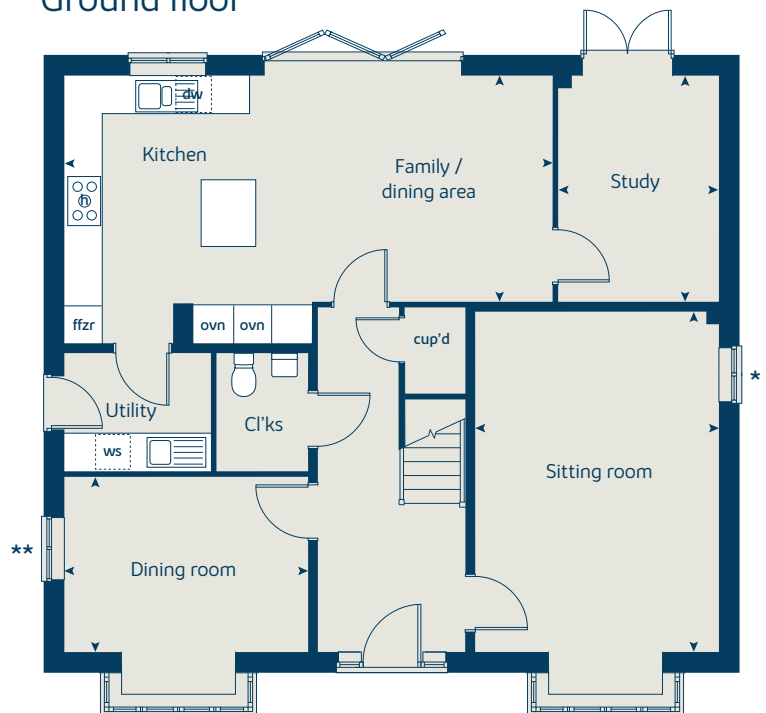
When you have finished with this leaflet please recycle it.

170-MILT Phase 6 DS07040 / 08.23

## First floor



## Ground floor







# The Ascot

5 bedroom home

[bovishomes.co.uk](http://bovishomes.co.uk)





# The Ascot

## 5 bedroom home

Ground floor	metres	feet / inches
Kitchen / family area	8.30 x 4.55	27' 3" x 14' 11"
Sitting room	5.55 x 5.05	18' 2" x 16' 7"
Dining room	3.90 x 3.44	12' 9" x 11' 4"
Study	3.37 x 1.97	11' 1" x 6' 6"

### First floor

Bedroom 1	4.55 x 3.72	14' 11" x 12' 3"
Bedroom 2	4.02 x 2.91	13' 2" x 9' 7"
Bedroom 3	3.75 x 3.54	12' 4" x 11' 8"
Bedroom 4	3.06 x 2.88	10' 1" x 9' 6"
Bedroom 5	3.91 x 2.45	12' 10" x 8' 0"

### The Ascot | P507 vt MMILT |

This floorplan has been produced for illustrative purposes only. Room sizes shown are between arrow points as indicated on plan. The dimensions have tolerances of + or -50mm and should not be used other than for general guidance. If specific dimensions are required, enquiries should be made to the sales consultant.

ovn	oven	f	fridge
h	hob	fzr	freezer
dw	dishwasher	cup'd	cupboard
ws	washing machine space	◀ ▶	measuring points
cyl	hot water cylinder		

Please refer to the sales consultant for specific plot details as the illustrations shown are computer generated impressions of how the property may look so are indicative only. External details or finishes may vary on individual plots and homes may be built in either detached or attached styles depending on the development layout. Exact specifications, window styles and whether a property is left or right handed may differ from plot to plot.

The floorplans shown are not to scale. Measurements are based on the original drawings. Slight variations may occur during construction.

Produced by the Vistry Group Design Studio.

When you have finished with this leaflet please recycle it.

170-MILT Phase 6 DS07300 / 08.23

