

# Priors Hall Park

Corby





# Priors Hall Park

Corby

Specification

[bovishomes.co.uk](http://bovishomes.co.uk)

**Bovis  
Homes** 

# Priors Hall Park

Corby

Use this guide to see what features are included in your new home. Your sales consultant will be happy to discuss the **Select** range of extras available.



2 bedroom  
The Cherry  
3 bedroom  
The Beech  
The Cypress  
The Rowan  
The Spruce  
4 bedroom  
The Aspen  
The Juniper  
The Willow  
5 bedroom  
The Yew

## Kitchen

Choice of standard fitted kitchen (doors & worktops)	■	■	■	■	■				
Choice of premium fitted kitchen (doors & worktops)									■
Stainless steel sink and drainer (single bowl) with chrome mixer tap	■	■	■	■	■	■	■	■	■
Stainless steel sink and drainer (single bowl) with chrome mixer tap in utility			■		■				■
Indesit hob (60cm) with built-in single underoven, with stainless steel splashback and curved glass chimney hood	■	■	■	■	■				
Hotpoint hob (75 cm) with built-in double high level oven, with glass splashback and curved glass chimney hood						■	■	■	
Bosch (75cm) hob with built-in double oven at high level, with glass splashback and stainless steel pyramid chimney hood									■
Pre-wired for under-unit lighting option	■	■	■	■	■	■	■	■	
LED under-unit flexible strip lighting									■
Fridge/freezer space	■	■	■	■	■				
Integrated (Indesit) 50/50 fridge-freezer						■	■	■	■
Space for integrated dishwasher with plumbing and electrics	■	■	■	■	■	■	■	■	
Integrated (Indesit) dishwasher									■
Space for washing machine with plumbing and electrics in utility			■		■	■			■
Space for washing machine with plumbing and electrics in kitchen	■	■		■			■		

## Bathrooms and en suites(s)

Ideal Standard contemporary white Concept Air sanitaryware suite with Aqua blade WC technology	■	■	■	■	■	■	■	■	■
Ideal Standard close coupled WC to cloakroom	■	■	■	■	■	■	■	■	■
Handheld hair wash attachment		■	■	■	■	■	■	■	■
Shower over the bath	■								
Ideal Standard low profile shower tray with glass enclosure to en suite	■	■	■	■	■	■	■	■	■
Walk in shower in ensuite to selected bedrooms									■
Choice of standard Porcelanosa wall tiling (splashback, half-height over bath, and full-height to shower cubicle)*	■	■	■	■	■	■	■	■	
Choice of standard Porcelanosa wall tiling (half-height to walls with fitted sanitary ware, half-height over bath, and full-height to shower cubicle)*									■
Chrome bezel LED bulkhead to bathroom and en suite(s)	■	■	■	■	■	■	■	■	■

2 bedroom  
The Cherry  
3 bedroom  
The Rowan  
The Cypress  
The Spruce  
The Beech  
4 bedroom  
The Aspen  
The Juniper  
The Willow  
5 bedroom  
The Yew

## Doors and Windows

Front door with multi-point security locking system and security chain	■	■	■	■	■	■	■	■	■
Chrome front door numbers	■	■	■	■	■	■	■	■	■
PVCu double glazing to windows	■	■	■	■	■	■	■	■	■
Double glazed PVCu French doors	■	■	■	■	■				■
Powder coated aluminium double glazed bi-fold doors						■	■	■	■
Internal doors to be Cottage style pre-primed with Brass Satin finish handles	■	■	■	■	■	■	■	■	■
Paving outside French/bifold door and path to garage personnel door (where applicable)	■	■	■	■	■	■	■	■	■

## General

White painted walls and smooth white ceilings	■	■	■	■	■	■	■	■	■
Combined usb/double sockets in kitchen and bedroom 1	■	■	■	■	■	■	■	■	■
Multi-media point in Sitting room	■	■	■	■	■	■	■	■	■
TV point to bedroom 1 and family room (where applicable)	■	■	■	■	■	■	■	■	■
Master telephone socket (plus to study where shown)	■	■	■	■	■	■	■	■	■
Gas central heating with wall mounted combi-boiler, programme selector and room thermostat(s)	■	■	■	■	■	■	■	■	
Gas central heating with wall mounted boiler and separate hot water cylinder, programme selector and room thermostat(s)									■
Thermostatic valves to all radiators (with the exception of rooms with separate thermostat control)	■	■	■	■	■	■	■	■	■
Fitted external tap	■	■	■	■	■	■	■	■	■
External light fitted to front porch and wiring for external light to rear door	■	■	■	■	■	■	■	■	■
Mains wired smoke detectors with battery back-up	■	■	■	■	■	■	■	■	■
Battery powered Carbon Monoxide detector (wall mounted) to be provided for each floor	■	■	■	■	■	■	■	■	■
Power and lighting to 'on plot' garage (where applicable)	■	■	■	■	■	■	■	■	■
Enclosed fenced rear garden, and garden gate (where applicable).	■	■	■	■	■	■	■	■	■
Landscaped front gardens	■	■	■	■	■	■	■	■	■
NHBC Buildmark cover	■	■	■	■	■	■	■	■	■
First two years' customer service support from Bovis Homes	■	■	■	■	■	■	■	■	■

■ Fitted as standard - included in the property

\* Subject to stage of construction

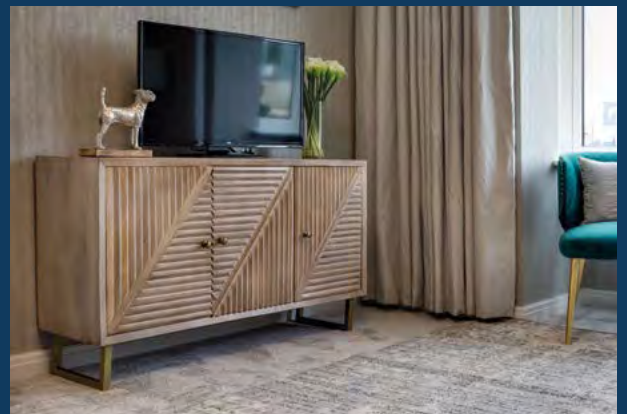
# So much choice...

Part of the excitement of buying a new home is the thrill of being the first person to live in the property and having a brand new contemporary kitchen and modern bathroom. Our premium brand partners ensure that all of our fixtures and fittings comply with the latest Government building regulations and only branded appliances are installed in your new home.

Once you know what specification comes included, you'll have a choice from our specially selected tiles for your kitchen and bathrooms, as well as kitchen worktops and cupboard doors. You can then use the Bovis Homes Select brochure to add the finishing touches to your home to make it extra special for you!

From personalising your bathrooms with stunning ceramics, or adding smooth sliding wardrobes to your master bedroom, there are a wide range of additional options and upgrades available.

The availability of items is subject to the stage of build, and can vary by development and house type. Our sales consultants will be happy to provide guidance.



The specification shown is correct at the time of production. Bovis Homes is continually reviewing and updating the specification on all house / apartment types and therefore reserves the right to change specification details. Photographs depict typical Bovis Homes interiors and may include optional upgrades. For full details regarding the current specification and finishes, please speak to our sales consultant.

Produced by the Vistry Group Design Studio.

When you have finished with this leaflet please recycle it.

CORBY DS08364 / 12.23

## PRIORS HALL PARK

**Bovis  
Homes** 

# Priors Hall Park

## Development plan



Future residential development by Vistry



### 2 bedroom homes

■ The Cherry

### 3 bedroom homes

■ The Beech

■ The Cypress

■ The Rowan

■ The Spruce

### 4 bedroom homes

■ The Aspen

■ The Juniper

■ The Willow

### 5 bedroom homes

■ The Yew

### Pre-sold homes

■ 2 bedroom homes

v visitor space

■ 3 bedroom homes

Future primary school by others

Public open space areas

Show home

Sales centre

Residential development by others

View home

This plan has been produced for home identification purposes only and is not to scale. The development layout, landscaping and tenure of all dwellings may be subject to change throughout the course of the development. Finishes and materials may vary from those shown on the plan. Please check the details of your chosen plot and house type with the sales consultant. Development layout plan correct at time of production.





# The Cherry

2 bedroom home

[bovishomes.co.uk](http://bovishomes.co.uk)

**Bovis  
Homes** 

# The Cherry

## 2 bedroom home

Ground floor	metres	feet / inches
Sitting room	3.72 x 3.65	12' 2" x 12' 0"
Kitchen / dining	4.73 x 3.25	15' 7" x 10' 8"

### First floor

Bedroom 1	4.74 x 3.45	15' 7" x 11' 4"
Bedroom 2	4.74 x 3.35	13' 2" x 8' 5"

ovn	oven	ffzs	fridge freezer space
h	hob	cup'd	cupboard
ws	washing machine space	◀ ▶	measuring points
ldr	larder		

### The Cherry | S224 CORBY |

The floorplan has been produced for illustrative purposes only. Room sizes shown are between arrow points as indicated on plan. The dimensions have tolerances of + or -50mm and should not be used other than for general guidance. If specific dimensions are required, enquiries should be made to the sales consultant. The floor plans shown are not to scale. Measurements are based on the original drawings. Slight variations may occur during construction.

The illustrations shown are computer generated impressions of how the property may look and are indicative only. External details or finishes may vary on individual plots and homes may be built in either detached or attached styles depending on the development layout. Exact specifications, window styles and whether a property is left or right handed may differ from plot to plot. Please speak to our sales consultant for specific plot details.

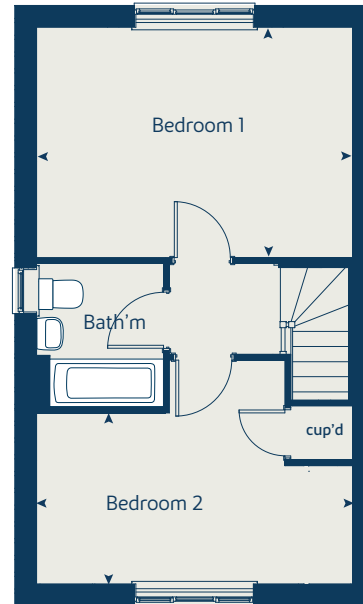
\*Window omitted to plot 4. Please speak to your sales consultant for more information.

Produced by the Vistry Group Design Studio.

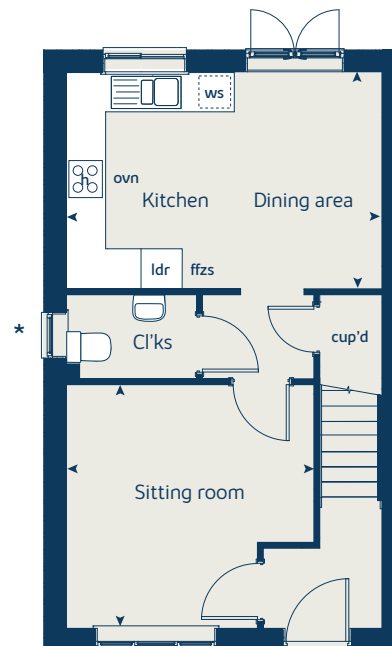
When you have finished with this leaflet please recycle it.

CORBY DS08364 / 12.23

### First floor



### Ground floor





# The Cypress

3 bedroom home

[bovishomes.co.uk](http://bovishomes.co.uk)

**Bovis  
Homes** 



# The Cypress

## 3 bedroom home

Ground floor	metres	feet / inches
Sitting room	3.40 x 4.40	11' 2" x 14' 6"
Kitchen / dining area	5.52 x 3.13	18' 2" x 10' 3"

### First floor

Bedroom 1	3.27 x 4.10	10' 9" x 13' 6"
Bedroom 2	3.27 x 2.82	10' 9" x 9' 3"
Bedroom 3	2.16 x 2.53	7' 1" x 11' 7"

ovn	oven	ffzs	fridge freezer space
h	hob	cup'd	cupboard
ds	dishwasher space	◀ ▶	measuring points

### The Cypress | X308 CORBY |

The floorplan has been produced for illustrative purposes only. Room sizes shown are between arrow points as indicated on plan. The dimensions have tolerances of + or -50mm and should not be used other than for general guidance. If specific dimensions are required, enquiries should be made to the sales consultant. The floor plans shown are not to scale. Measurements are based on the original drawings. Slight variations may occur during construction.

The illustrations shown are computer generated impressions of how the property may look and are indicative only. External details or finishes may vary on individual plots and homes may be built in either detached or attached styles depending on the development layout. Exact specifications, window styles and whether a property is left or right handed may differ from plot to plot. Please speak to our sales consultant for specific plot details.

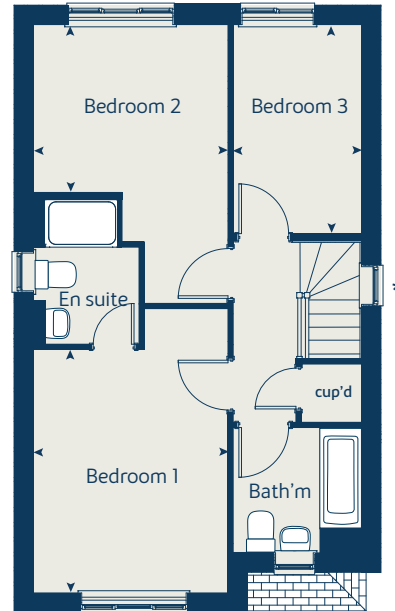
\*Window omitted to plot 4. Please speak to your sales consultant for more information.

Produced by the Vistry Group Design Studio.

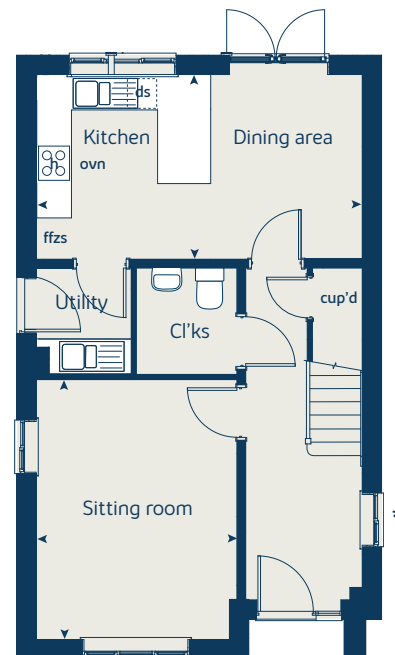
When you have finished with this leaflet please recycle it.

CORBY DS08364 / 12.23

### First floor



### Ground floor





# The Rowan

3 bedroom home

[bovishomes.co.uk](http://bovishomes.co.uk)

**Bovis  
Homes** 

# The Rowan

3 bedroom home

Ground floor	metres	feet / inches
Sitting / dining room	5.19 x 5.23	17' 0" x 18' 0"
Kitchen	2.46 x 2.85	8' 1" x 9' 4"

## First floor

Bedroom 1	3.68 x 3.57	12' 1" x 11' 9"
Bedroom 2	2.97 x 2.44	9' 9" x 8' 0"
Bedroom 3	2.12 x 3.54	7' 0" x 11' 7"

ovn	oven	ffzs	fridge freezer space
h	hob	cup'd	cupboard
ws	washing machine space	◀ ▶	measuring points

### The Rowan | X306 CORBY |

The floorplan has been produced for illustrative purposes only. Room sizes shown are between arrow points as indicated on plan. The dimensions have tolerances of + or -50mm and should not be used other than for general guidance. If specific dimensions are required, enquiries should be made to the sales consultant. The floor plans shown are not to scale. Measurements are based on the original drawings. Slight variations may occur during construction.

The illustrations shown are computer generated impressions of how the property may look and are indicative only. External details or finishes may vary on individual plots and homes may be built in either detached or attached styles depending on the development layout. Exact specifications, window styles and whether a property is left or right handed may differ from plot to plot. Please speak to our sales consultant for specific plot details.

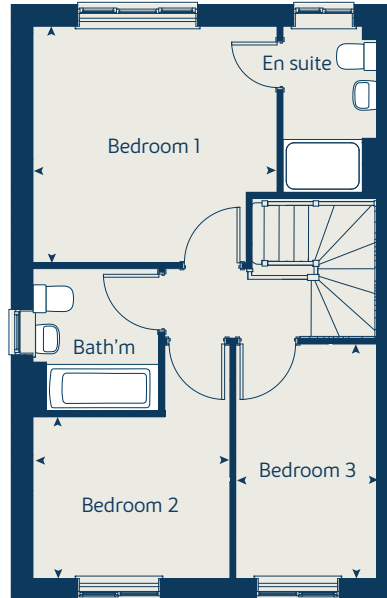
\*Window omitted to plots 68, 92 and 93. Please speak to your sales consultant for more information.

Produced by the Vistry Group Design Studio.

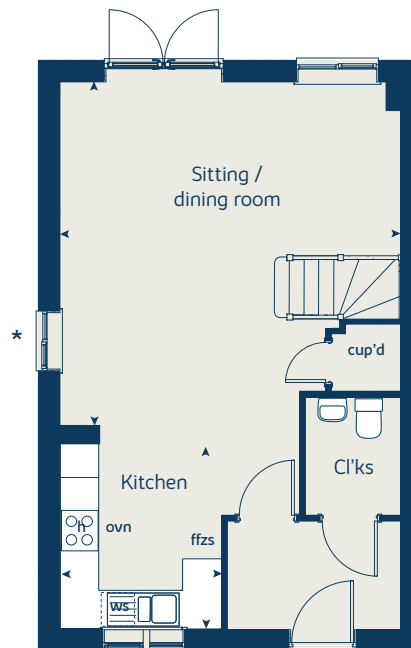
When you have finished with this leaflet please recycle it.

CORBY DS08364 / 12.23

## First floor



## Ground floor





# The Spruce

3 bedroom home

[bovishomes.co.uk](http://bovishomes.co.uk)

**Bovis  
Homes** 

# The Spruce

## 3 bedroom home

Ground floor	metres	feet / inches
Sitting room	3.32 x 5.52	10' 11" x 18' 2"
Kitchen	2.69 x 3.16	8' 10" x 10' 4"
Dining area	3.14 x 2.36	10' 4" x 7' 9"

### First floor

Bedroom 1	2.94 x 5.52	9' 8" x 10' 11"
Bedroom 2	3.59 x 3.26	11' 10" x 10' 9"
Bedroom 3	3.63 x 2.17	11' 11" x 7' 2"

ovn	oven	ffzs	fridge freezer space
h	hob	cup'd	cupboard
ds	dishwasher space	◀ ▶	measuring points
ws	washing machine space		

### The Spruce | X307 CORBY |

The floorplan has been produced for illustrative purposes only. Room sizes shown are between arrow points as indicated on plan. The dimensions have tolerances of + or -50mm and should not be used other than for general guidance. If specific dimensions are required, enquiries should be made to the sales consultant. The floor plans shown are not to scale. Measurements are based on the original drawings. Slight variations may occur during construction.

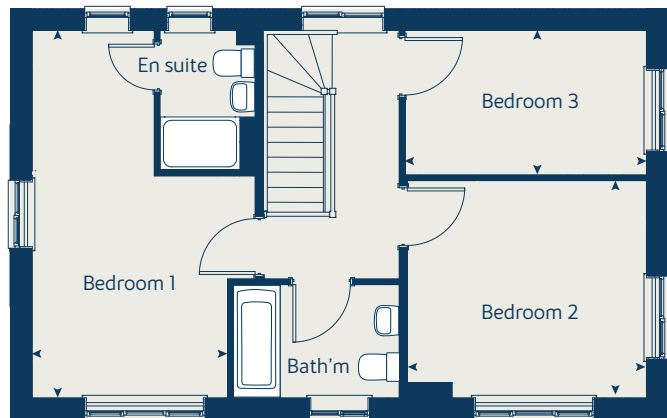
The illustrations shown are computer generated impressions of how the property may look and are indicative only. External details or finishes may vary on individual plots and homes may be built in either detached or attached styles depending on the development layout. Exact specifications, window styles and whether a property is left or right handed may differ from plot to plot. Please speak to our sales consultant for specific plot details.

Produced by the Vistry Group Design Studio.

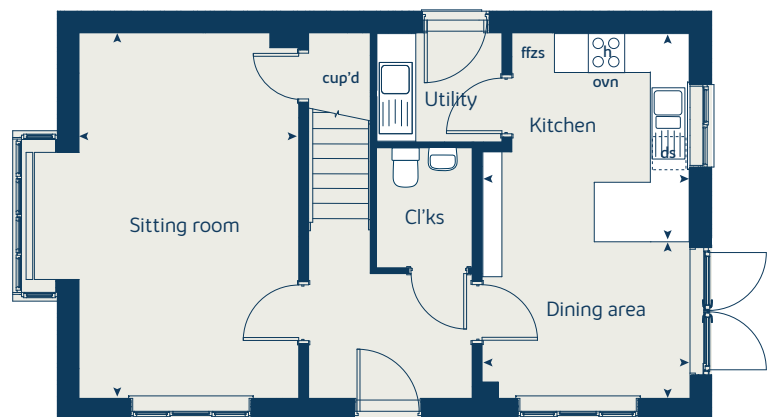
When you have finished with this leaflet please recycle it.

CORBY DS08364 / 0724

### First floor



### Ground floor





# The Aspen

4 bedroom home

[bovishomes.co.uk](http://bovishomes.co.uk)

**Bovis  
Homes** 

# The Aspen

## 4 bedroom home

Ground floor	metres	feet / inches
Sitting room	3.39 x 5.04	11' 1" x 16' 6"
Kitchen / dining area	7.79 x 3.38	25' 6" x 11' 1"
Study	2.02 x 2.02	6' 8" x 6' 7"

### First floor

Bedroom 1	3.82 x 4.52	12' 6" x 14' 10"
Bedroom 2	3.87 x 3.11	12' 8" x 10' 2"
Bedroom 3	4.08 x 2.42	13' 4" x 7' 11"
Bedroom 4	3.61 x 2.46	11' 10" x 8' 1"

ovn	oven	ldr	larder
h	hob	ffzr	fridge freezer
ds	dishwasher space	cup'd	cupboard
ws	washing machine space	< >	measuring points

### The Aspen | X414 CORBY |

The floorplan has been produced for illustrative purposes only. Room sizes shown are between arrow points as indicated on plan. The dimensions have tolerances of + or -50mm and should not be used other than for general guidance. If specific dimensions are required, enquiries should be made to the sales consultant. The floor plans shown are not to scale. Measurements are based on the original drawings. Slight variations may occur during construction.

The illustrations shown are computer generated impressions of how the property may look and are indicative only. External details or finishes may vary on individual plots and homes may be built in either detached or attached styles depending on the development layout. Exact specifications, window styles and whether a property is left or right handed may differ from plot to plot. Please speak to our sales consultant for specific plot details.

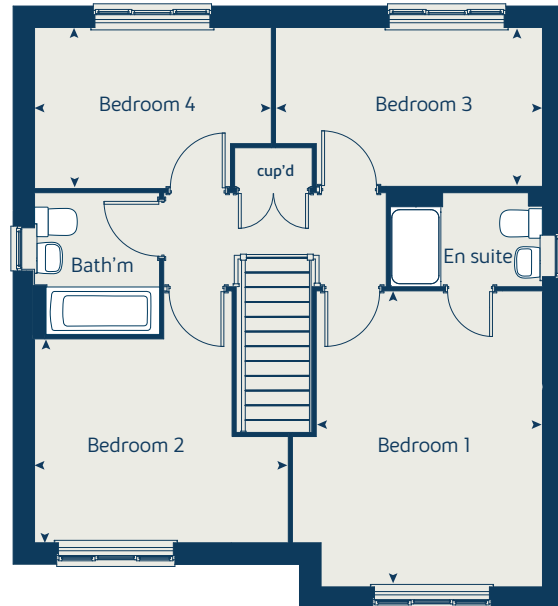
\*Window omitted to plot 76. Please speak to your sales consultant for more information.

Produced by the Vistry Group Design Studio.

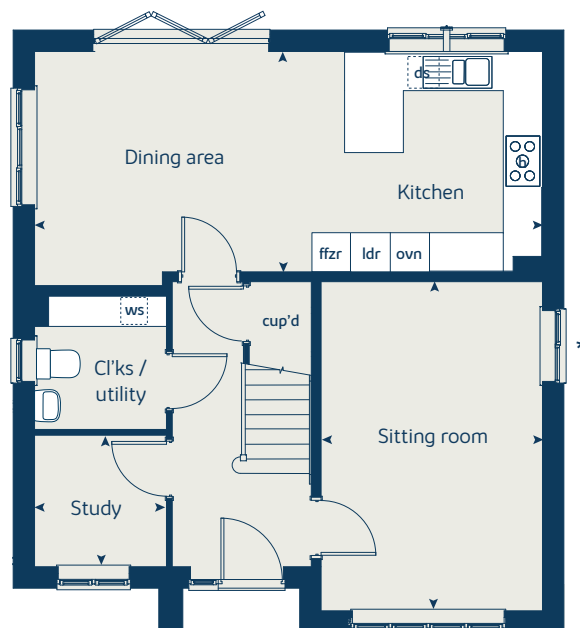
When you have finished with this leaflet please recycle it.

CORBY DS08364 / 12.23

### First floor



### Ground floor





# The Juniper

4 bedroom home

[bovishomes.co.uk](http://bovishomes.co.uk)

**Bovis  
Homes** 



# The Juniper

## 4 bedroom home

Ground floor	metres	feet / inches
Sitting room	3.05 x 4.55	10' 0" x 14' 11"
Kitchen / dining area	7.21 x 3.52	23' 8" x 11' 7"
Study	1.86 x 2.34	6' 1" x 7' 8"

### First floor

Bedroom 1	3.05 x 3.53	11' 5" x 9' 4"
Bedroom 2	2.96 x 2.84	12' 0" x 9' 4"
Bedroom 3	3.52 x 2.38	11' 7" x 7' 10"
Bedroom 4	3.60 x 2.38	11' 10" x 7' 10"

ovn	oven	ffzr	fridge freezer
h	hob	cup'd	cupboard
ds	dishwasher space	◀ ▶	measuring points
ldr	larder		

### The Juniper | X412 CORBY |

The floorplan has been produced for illustrative purposes only. Room sizes shown are between arrow points as indicated on plan. The dimensions have tolerances of + or -50mm and should not be used other than for general guidance. If specific dimensions are required, enquiries should be made to the sales consultant. The floor plans shown are not to scale. Measurements are based on the original drawings. Slight variations may occur during construction.

The illustrations shown are computer generated impressions of how the property may look and are indicative only. External details or finishes may vary on individual plots and homes may be built in either detached or attached styles depending on the development layout. Exact specifications, window styles and whether a property is left or right handed may differ from plot to plot. Please speak to our sales consultant for specific plot details.

\*Window omitted to plot 81. Please speak to your sales consultant for more information.

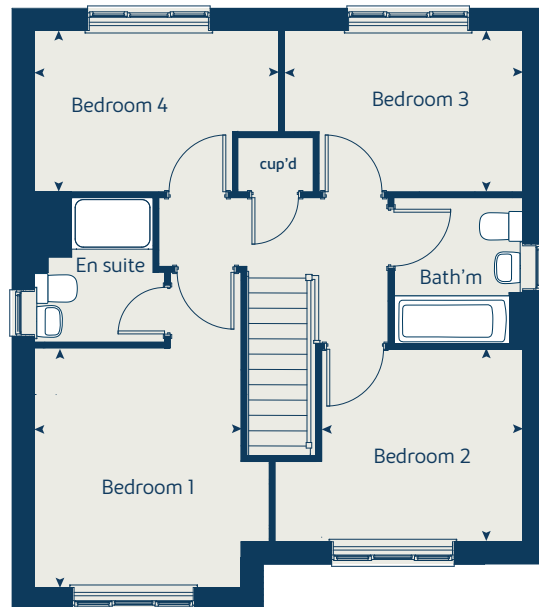
\*\*Window omitted to plots 77 & 84. Please speak to your sales consultant for more information.

Produced by the Vistry Group Design Studio.

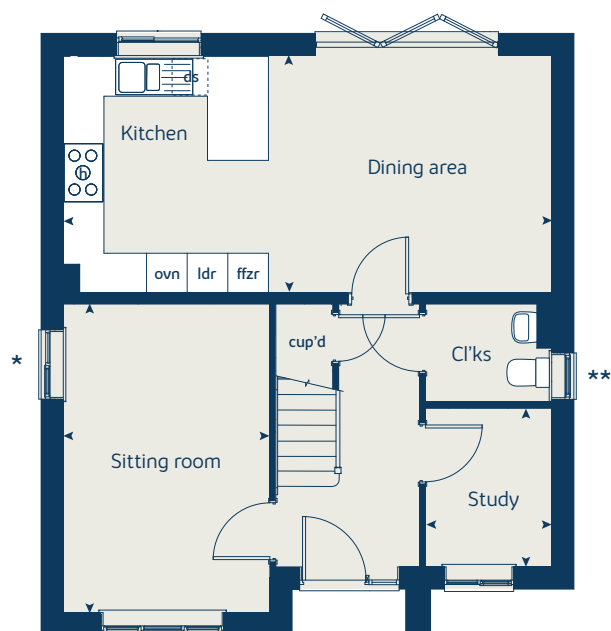
When you have finished with this leaflet please recycle it.

CORBY DS08364 / 12.23

### First floor



### Ground floor





# The Willow

4 bedroom home

[bovishomes.co.uk](http://bovishomes.co.uk)

**Bovis  
Homes** 

# The Willow

## 4 bedroom home

Ground floor	metres	feet / inches
Sitting room	3.22 x 4.42	10' 7" x 14' 6"
Kitchen / dining area	5.97 x 3.77	19' 7" x 12' 4"

### First floor

Bedroom 2	3.33 x 4.89	10' 11" x 16' 1"
Bedroom 3	3.33 x 4.04	10' 11" x 11' 0"
Bedroom 4	2.56 x 2.92	8' 5" x 9' 7"

### Second floor

Bedroom 1	4.34 x 5.61	14' 3" x 11' 6"
-----------	-------------	-----------------

ovn	oven	ffzr	fridge freezer
h	cup'd	hob	cupboard
ds	dishwasher space	◀ ▶	measuring points
ws	washing machine space		

### The Willow | X411 CORBY |

The floorplan has been produced for illustrative purposes only. Room sizes shown are between arrow points as indicated on plan. The dimensions have tolerances of + or -50mm and should not be used other than for general guidance. If specific dimensions are required, enquiries should be made to the sales consultant. The floor plans shown are not to scale. Measurements are based on the original drawings. Slight variations may occur during construction.

The illustrations shown are computer generated impressions of how the property may look and are indicative only. External details or finishes may vary on individual plots and homes may be built in either detached or attached styles depending on the development layout. Exact specifications, window styles and whether a property is left or right handed may differ from plot to plot. Please speak to our sales consultant for specific plot details.

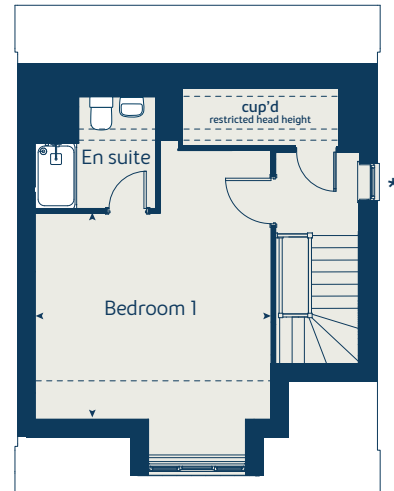
\*Window omitted to plots 73, 74, 86, 87 and 95. Please speak to your sales consultant for more information.

Produced by the Vistry Group Design Studio.

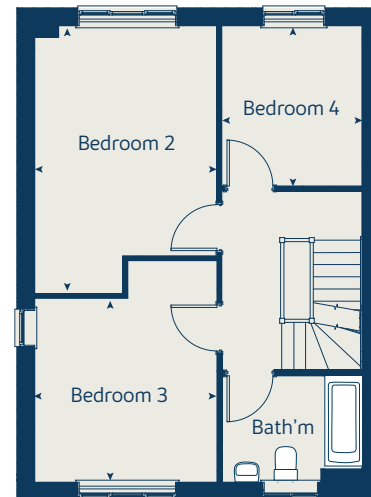
When you have finished with this leaflet please recycle it.

CORBY DS08364 / 12.23

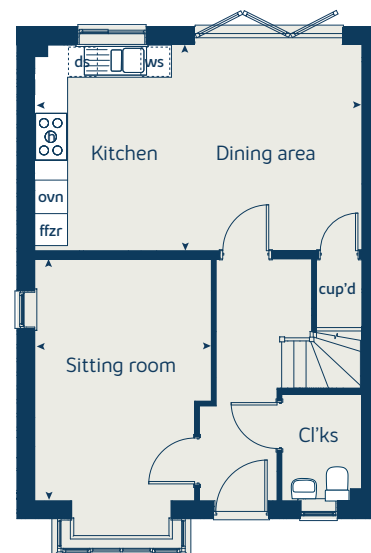
## Second floor



## First floor



## Ground floor





# The Yew

5 bedroom home

[bovishomes.co.uk](http://bovishomes.co.uk)

**Bovis  
Homes** 

# The Yew

## 5 bedroom home

Ground floor	metres	feet / inches
Sitting room	3.17 x 4.69	10' 5" x 15' 5"
Kitchen	3.16 x 3.71	10' 5" x 12' 2"
Dining area	3.16 x 4.73	10' 5" x 15' 7"
Study	3.17 x 1.76	10' 5" x 5' 9"

### First floor

Bedroom 1	3.73 x 4.18	12' 3" x 11' 5"
Bedroom 3	3.22 x 4.20	10' 7" x 13' 9"
Bedroom 5	2.91 x 2.27	9' 7" x 7' 5"

### Second floor

Bedroom 2	3.21 x 5.01	10' 7" x 14' 8"
Bedroom 4	3.73 x 2.86	12' 3" x 8' 5"

ovn	oven	ffzr	fridge freezer
h	hob	cup'd	cupboard
ds	dishwasher space	cyl	hot water cylinder
ws	washing machine space	◀ ▶	measuring points
ldr	larder		

### The Yew | X519 CORBY |

The floorplan has been produced for illustrative purposes only. Room sizes shown are between arrow points as indicated on plan. The dimensions have tolerances of + or -50mm and should not be used other than for general guidance. If specific dimensions are required, enquiries should be made to the sales consultant. The floor plans shown are not to scale. Measurements are based on the original drawings. Slight variations may occur during construction.

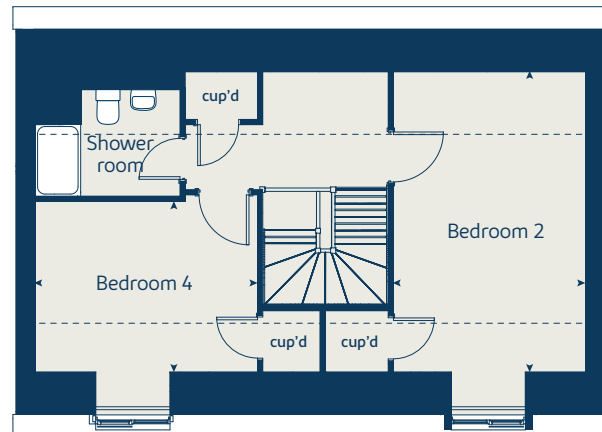
The illustrations shown are computer generated impressions of how the property may look and are indicative only. External details or finishes may vary on individual plots and homes may be built in either detached or attached styles depending on the development layout. Exact specifications, window styles and whether a property is left or right handed may differ from plot to plot. Please speak to our sales consultant for specific plot details.

Produced by the Vistry Group Design Studio.

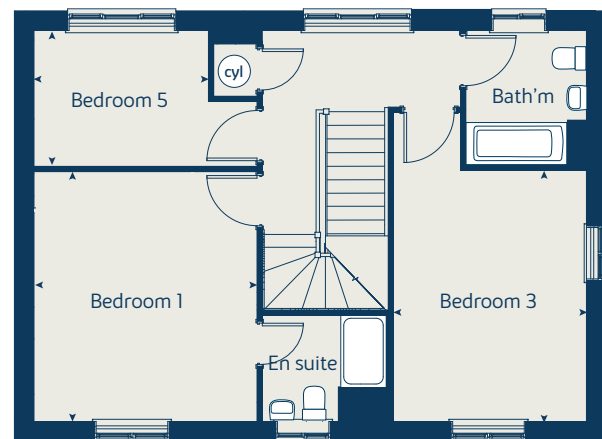
When you have finished with this leaflet please recycle it.

CORBY DS08364 / 12.23

## Second floor



## First floor



## Ground floor

