

# The Tors

Tavistock





# The Tors

Tavistock

A taste of local life

[bovishomes.co.uk](http://bovishomes.co.uk)

**LiveWest**  
A home for everyone

**Bovis  
Homes** 



# Welcome to The Tors

This exciting new development is in historic Tavistock, a West Devon stannary town for the tin mining industry and now a lively centre just 15 miles from the port city of Plymouth. Sitting beside the pretty River Tavy and within easy reach of Dartmoor National Park, Tavistock is a popular market town with world heritage status and a rich history.

Today its range of independent shops sits alongside the 900-year-old pannier market. With pubs, restaurants, leisure and sports facilities, as well as schools, health centres and supermarkets, Tavistock offers everything you need.

At The Tors, you'll find a stunning selection of 2, 3, 4 and 5 bedroom homes, all carefully designed to suit the needs of modern living. So if you're looking for a quality new home in a sought-after location, your search ends here.

## Getting around

The Tors is just off the A390 Callington Road, just over a mile from the town centre and close to the A386 for Yelverton, six miles away and Plymouth, 15 miles. From Plymouth the A38 takes you west to Cornwall. The M5 at Exeter is 40 miles away via the A386 and A30. For train services to Plymouth and Exeter, Gunnislake Railway Station, is less than five miles away along the A390. For air travel Exeter Airport is 47 miles away and there are ferries from Plymouth.

## A trip to the shops

For supermarket shopping choose from a Tesco superstore, a Lidl, or Morrisons, all less than a mile away. There's also a Spar convenience store about half a mile away. In Tavistock you'll find one of the best Farmers' Markets in the South West, plus the historic Pannier Market – home to independent traders and hidden gems. The town is bursting with unique shops and boutiques selling books, clothing, crafts, outdoor equipment, antiques, food and jewellery. Take a trip to Plymouth and explore Drake Circus,

with more than 70 top brands such as M&S, Joules and Jack Wills. The city centre offers a mix of independent and High Street stores and the 150-stall Plymouth Market is packed with fresh fish and food and drink stalls.

## Taking time out

Tavistock and the surrounding area is full of things to do from canoeing down the River Tamar, trekking across Dartmoor National Park, or enjoying live music at Tavistock Wharf. There are clubs for golf, football and rugby, and for fitness fans there's a leisure centre and a swim centre. Yelverton Cinema offers the latest films and you can walk or cycle along scenic Drake's Trail. Discover centuries of history linked to Tavistock Abbey with a guided tour by a local historian. At Morwellham Quay you'll find a living museum on the River Tamar and the impressive National Trust Cotehele Tudor House is also close by. In Plymouth the Royal William Yard boasts the largest collection of Grade 1 listed military buildings in Europe.

## Education

There are a number of pre-schools within easy reach of The Tors and the Tavistock Community Primary School is less than a mile away. There are two other primary schools in the town, Whitchurch Community Primary and St Rumon's Church of England Infants School. St Rumon's is part of the Tavistock Church School's Federation that includes St Peter's Church of England Junior School. For senior pupils Tavistock College is an Academy catering for 11 to 18-year-olds. The independent Mount Kelly is a mixed boarding and day school for pupils aged from 3 to 18-years-old.



# The Tors

35 Brook Street,  
Tavistock PL19 0HE

## From Exeter

- From Exeter head East on the A30 for 25 miles
- Leave the A30 at the exit signposted Tavistock/Plymouth and head left on the A386
- Follow the A386 for 12 miles until you approach Tavistock and continue straight at the first roundabout
- At the next roundabout turn right, signposted Plymouth/Town Centre
- At the next roundabout continue straight, following town centre
- Turn right into Duke Street, leading to Brook Street
- The Bovis Homes shop is 150 meters ahead on the right

## From Plymouth

- From Plymouth head North on the A386 for 7 miles towards Yelverton
- At the roundabout take the first exit, staying on the A386 towards Tavistock
- Stay on the A386 for 4 miles
- As you approach Tavistock, continue straight at the first three roundabouts, staying on the A386
- At the fourth roundabout turn right, signposted Town Centre
- Continue ½ mile to the next roundabout & turn left, following town centre
- Turn right into Duke Street, leading to Brook Street
- The Bovis Homes shop is 150 meters ahead on the right



When you have finished with this leaflet please recycle it.

Cover photograph of Tavistock. Not view from the development. The streetscene shown above has been produced for illustrative purposes only, please check the details of the homes you are interested in with the sales advisor.

Bovis Homes Limited, Countryside Partnerships South West region  
Camberwell House, Grenadier Road, Exeter Business Park, Exeter Devon EX1 3QF. Telephone: 0800 9755 946

Produced by the Vistry Group Design Studio.

OTAV1 DS02592 / 01.23





# The Tors

Tavistock

**LiveWest**  
A home for everyone

Development plan

[bovishomes.co.uk](http://bovishomes.co.uk)

**Bovis  
Homes** 

# The Tors

Tavistock

## 2 bedroom homes

- The Buckthorn
- The Holly

## 3 bedroom homes

- The Poplar
- The Cypress
- The Hazel
- The Spruce
- The Spruce V2
- The Spruce V3

## 4 bedroom homes

- The Alder
- The Willow
- The Aspen
- The Juniper
- The Chestnut
- The Anderson
- The Drake

## 5 bedroom homes

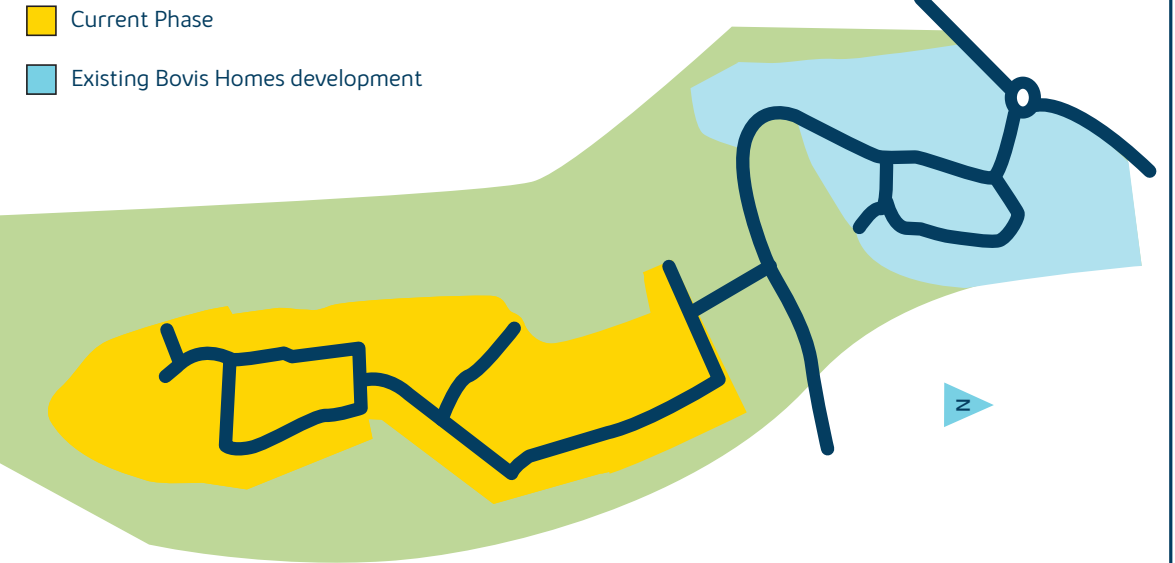
- The Birch
- The Lime
- The Yew

## Pre-sold homes

- 1 bedroom homes
- 2 bedroom homes
- 3 bedroom homes

- v visitor space
- ss substation
- cs cycle store
- bs bin store
- pos public open space
- neap neighbourhood equipped area of play

## Masterplan



This plan has been produced for home identification purposes only and is not to scale. The development layout, landscaping and tenure of all dwellings may be subject to change throughout the course of the development. Finishes and materials may vary from those shown on the plan. Please check the details of your chosen plot and house type with the sales consultant. Development layout plan correct at time of production.

The streetscene shown has been produced for illustrative purposes only, please check the details of the homes you are interested in with the sales consultant.

**Vistry Devon South West region**

Heron Road, Sowton Industrial Estate, Exeter, Devon EX2 7LL. Telephone: 01392 344 700

Produced by the Vistry Group Design Studio.

DTAV1 DS12382 / 10.24





# The Buckthorn

2 bedroom home

**LiveWest**  
A home for everyone

**Bovis  
Homes** 

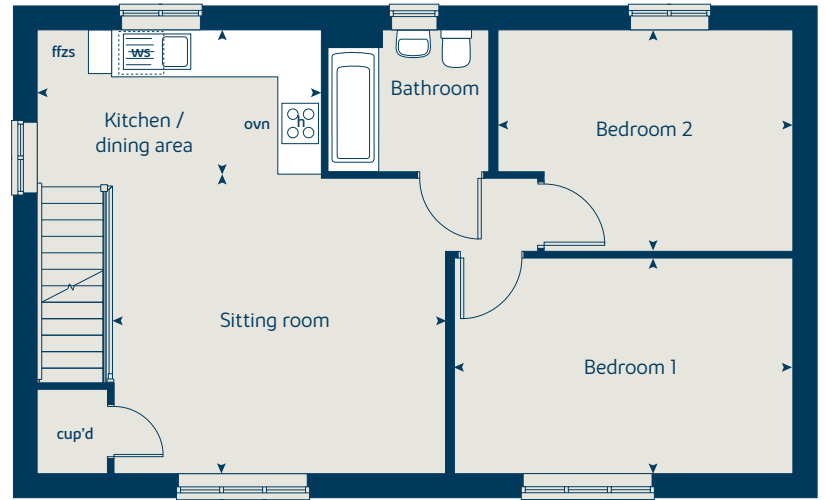
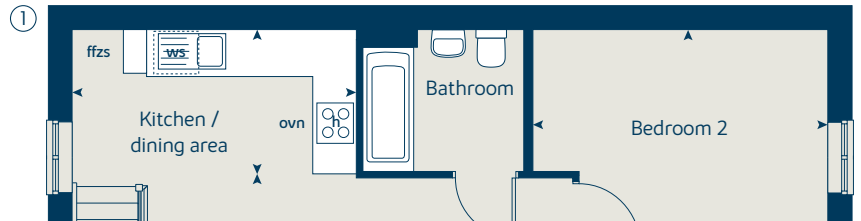
[bovishomes.co.uk](http://bovishomes.co.uk)



# The Buckthorn

## 2 bedroom home

### First floor



First floor	metres	feet / inches
Kitchen / dining area	3.90 x 2.03	12' 10" x 6' 8"
Sitting room	4.54 x 4.05	14' 11" x 13' 4"
Bedroom 1	4.64 x 2.96	15' 3" x 9' 9"
Bedroom 2	4.04 x 3.04	13' 3" x 10' 0"

#### The Buckthorn | XF201A 01 vt OTAV1 |

This floorplan has been produced for illustrative purposes only. Room sizes shown are between arrow points as indicated on plan. The dimensions have tolerances of + or -50mm and should not be used other than for general guidance. If specific dimensions are required, enquiries should be made to the sales consultant.

① Alternative layout to plot 352 only. Please see sales consultant for further details.

ovn	oven	ffzs	fridge freezer space
h	hob	cup'd	cupboard
ws	washing machine space	◀ ▶	measuring points

Please refer to the sales consultant for specific plot details as the illustrations shown are computer generated impressions of how the property may look so are indicative only. External details or finishes may vary on individual plots and homes may be built in either detached or attached styles depending on the development layout. Exact specifications, window styles and whether a property is left or right handed may differ from plot to plot.

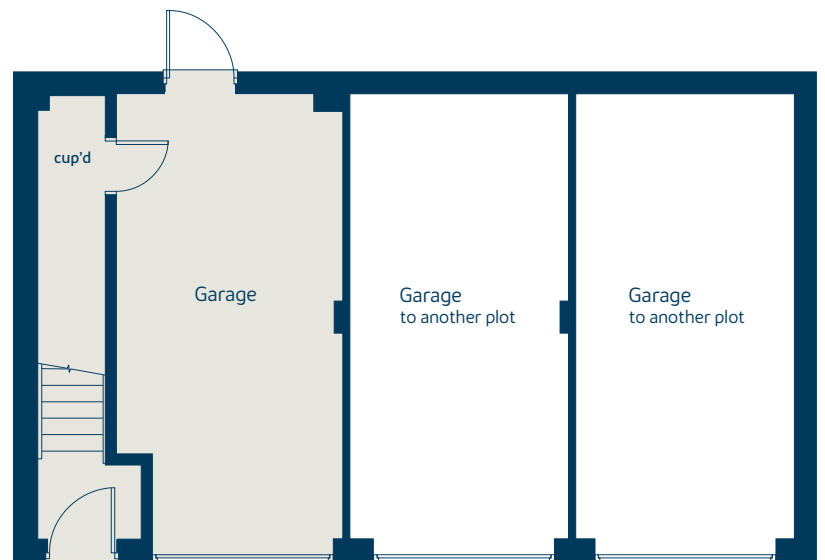
The floorplans shown are not to scale. Measurements are based on the original drawings. Slight variations may occur during construction.

Produced by the Vistry Group Design Studio.

When you have finished with this leaflet please recycle it.

OTAV1 DS02592 / 01.23

### Ground floor





# The Poplar

3 bedroom home

**LiveWest**  
A home for everyone

**Bovis  
Homes** 

[bovishomes.co.uk](http://bovishomes.co.uk)

# The Poplar

## 3 bedroom home

Ground floor	metres	feet / inches
Kitchen / dining area	4.74 x 4.46	15' 6" x 14' 7"
Study	2.57 x 2.13	8' 5" x 6' 11"

First floor	metres	feet / inches
Sitting room	4.74 x 3.43	15' 6" x 11' 3"
Bedroom 3	4.74 x 2.57	15' 6" x 8' 5"

Second floor	metres	feet / inches
Bedroom 1	4.74 x 3.46	15' 6" x 11' 4"
Bedroom 2	4.74 x 2.54	15' 6" x 8' 4"

### The Poplar | X310 01 OTAV1 |

This floorplan has been produced for illustrative purposes only. Room sizes shown are between arrow points as indicated on plan. The dimensions have tolerances of + or -50mm and should not be used other than for general guidance. If specific dimensions are required, enquiries should be made to the sales consultant.

\* Windows apply to selected plots only. Please see sales consultant for further details.

ovn	oven	ffzs	fridge freezer space
h	hob	cup'd	cupboard
ds	dishwasher space	◀ ▶	measuring points
ws	washing machine space		

Please refer to the sales consultant for specific plot details as the illustrations shown are computer generated impressions of how the property may look so are indicative only. External details or finishes may vary on individual plots and homes may be built in either detached or attached styles depending on the development layout. Exact specifications, window styles and whether a property is left or right handed may differ from plot to plot.

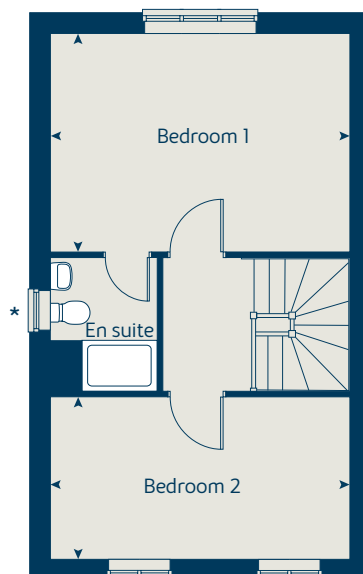
The floorplans shown are not to scale. Measurements are based on the original drawings. Slight variations may occur during construction.

Produced by the Vistry Group Design Studio.

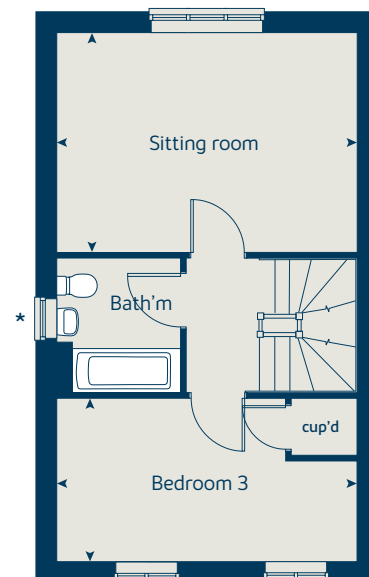
When you have finished with this leaflet please recycle it.

OTAV1 DS02592 / 01.23

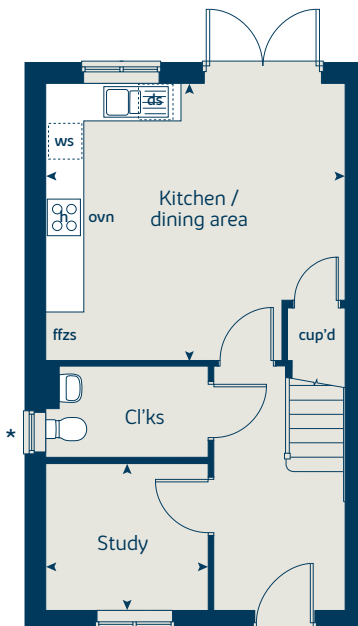
### Second floor



### First floor



### Ground floor





# The Hazel

3 bedroom home

[bovishomes.co.uk](http://bovishomes.co.uk)

**Bovis  
Homes** 

# The Hazel

## 3 bedroom home

Ground floor	metres	feet / inches
Kitchen / dining room	5.19 x 2.99	17' 0" x 9' 10"
Sitting room	4.17 x 3.66	13' 8" x 12' 0"

### First floor

Bedroom 1	3.54 x 3.29	11' 7" x 10' 9"
Bedroom 2	2.95 x 2.72	9' 8" x 8' 11"
Bedroom 3	3.48 x 2.15	11' 5" x 7' 1"

ovn	oven	ffzs	fridge freezer space
h	hob	cup'd	cupboard
ds	dishwasher space	w	wardrobe
ws	washing machine space	◀ ▶	measuring points

### The Hazel | X305 04 Tavistock |

The floorplan has been produced for illustrative purposes only. Room sizes shown are between arrow points as indicated on plan. The dimensions have tolerances of + or -50mm and should not be used other than for general guidance. If specific dimensions are required, enquiries should be made to the sales consultant. The floor plans shown are not to scale. Measurements are based on the original drawings. Slight variations may occur during construction.

The illustrations shown are computer generated impressions of how the property may look and are indicative only. External details or finishes may vary on individual plots and homes may be built in either detached or attached styles depending on the development layout. Exact specifications, window styles and whether a property is left or right handed may differ from plot to plot. Please speak to our sales consultant for specific plot details.

\* Window applies to plot 195 only. Please see sales consultant for further details.

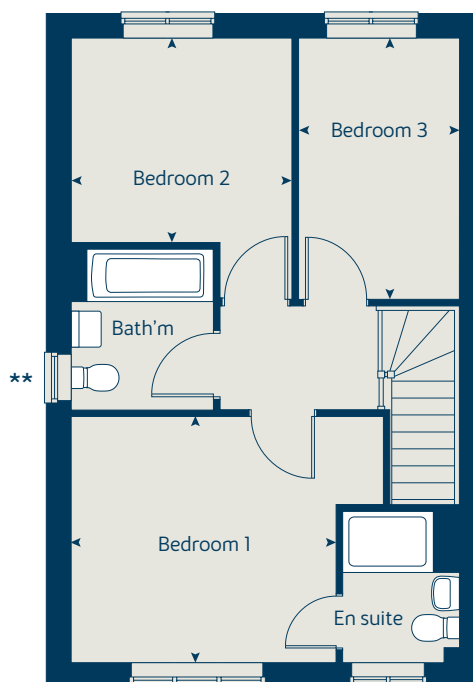
\*\* Window applicable to plots 184, 187, 188, 191, 192, 195 & 240 only. Please see sales consultant for further details.

Produced by the Vistry Group Design Studio.

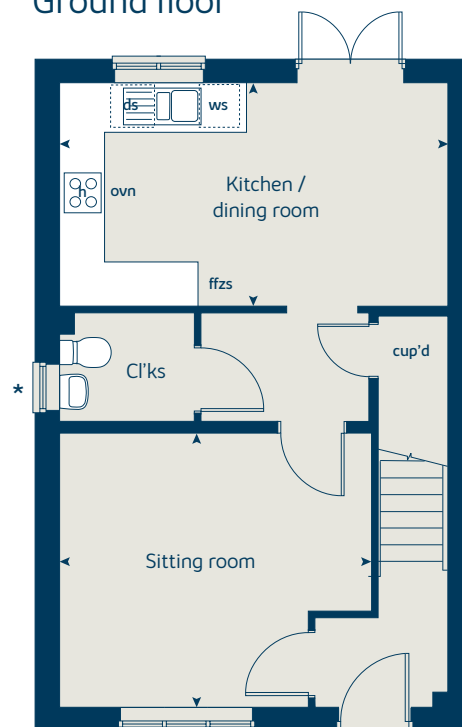
When you have finished with this leaflet please recycle it.

670 DS09632 / 03.24

### First floor



### Ground floor





# The Spruce B

3 bedroom home

**LiveWest**  
A home for everyone

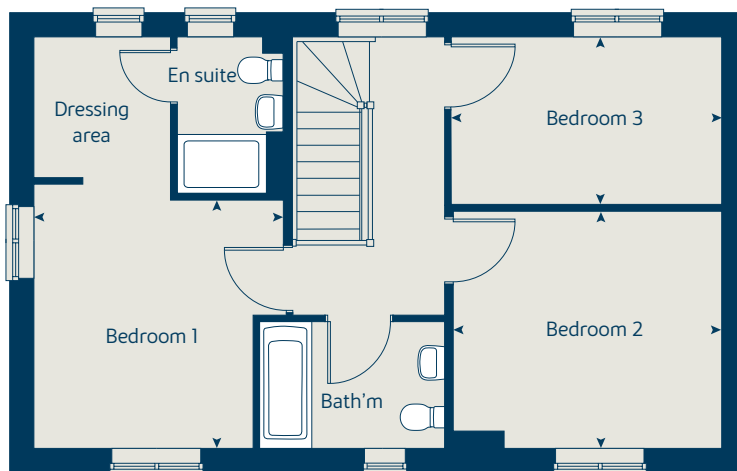
**Bovis  
Homes** 

[bovishomes.co.uk](http://bovishomes.co.uk)

# The Spruce B

## 3 bedroom home

### First floor



Ground floor	metres	feet / inches
Kitchen	3.23 x 2.69	10' 7" x 8' 9"
Dining area	3.14 x 2.30	10' 3" x 7' 6"
Sitting room	5.53 x 3.32	18' 1" x 10' 10"

#### First floor

Bedroom 1	3.39 x 3.33	11' 1" x 10' 11"
Bedroom 2	3.61 x 3.18	11' 10" x 10' 5"
Bedroom 3	3.61 x 2.25	11' 10" x 7' 4"

#### The Spruce B | X307B (IF) 01 OTAV1 |

This floorplan has been produced for illustrative purposes only. Room sizes shown are between arrow points as indicated on plan. The dimensions have tolerances of + or -50mm and should not be used other than for general guidance. If specific dimensions are required, enquiries should be made to the sales consultant.

ovn	oven	ffzs	fridge freezer space
h	hob	cup'd	cupboard
ds	dishwasher space	◀ ▶	measuring points
ws	washing machine space		

Please refer to the sales consultant for specific plot details as the illustrations shown are computer generated impressions of how the property may look so are indicative only. External details or finishes may vary on individual plots and homes may be built in either detached or attached styles depending on the development layout. Exact specifications, window styles and whether a property is left or right handed may differ from plot to plot.

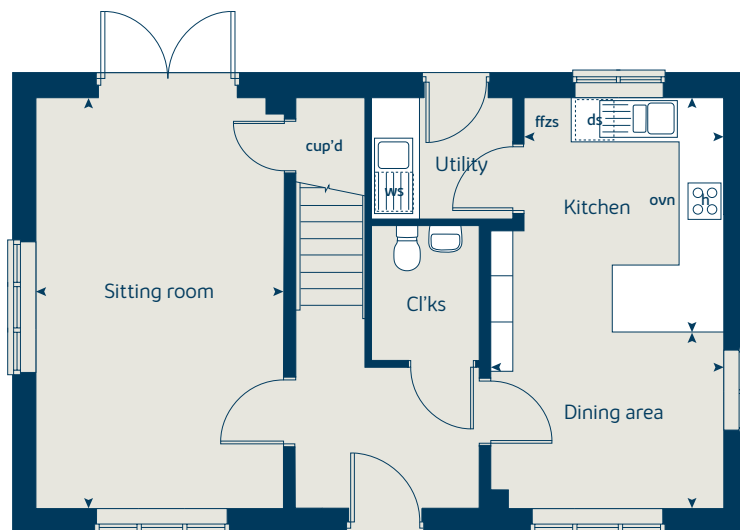
The floorplans shown are not to scale. Measurements are based on the original drawings. Slight variations may occur during construction.

Produced by the Vistry Group Design Studio.

When you have finished with this leaflet please recycle it.

OTAV1 DS02592 / 01.23

### Ground floor





# The Spruce V1

3 bedroom home

**LiveWest**  
A home for everyone

**Bovis  
Homes** 

[bovishomes.co.uk](http://bovishomes.co.uk)



# The Spruce V1

## 3 bedroom home

Ground floor	metres	feet / inches
Kitchen	3.23 x 2.69	10' 7" x 8' 9"
Dining area	3.14 x 2.30	10' 3" x 7' 6"
Sitting room	5.53 x 3.32	18' 1" x 10' 10"

### First floor

Bedroom 1	3.39 x 3.33	11' 1" x 10' 11"
Bedroom 2	3.61 x 3.18	11' 10" x 10' 5"
Bedroom 3	3.61 x 2.25	11' 10" x 7' 4"

### The Spruce | X307V1 (IF) 01 OTAV1 |

This floorplan has been produced for illustrative purposes only. Room sizes shown are between arrow points as indicated on plan. The dimensions have tolerances of + or -50mm and should not be used other than for general guidance. If specific dimensions are required, enquiries should be made to the sales consultant.

ovn	oven	ffzs	fridge freezer space
h	hob	cup'd	cupboard
ds	dishwasher space	◀ ▶	measuring points
ws	washing machine space		

Please refer to the sales consultant for specific plot details as the illustrations shown are computer generated impressions of how the property may look so are indicative only. External details or finishes may vary on individual plots and homes may be built in either detached or attached styles depending on the development layout. Exact specifications, window styles and whether a property is left or right handed may differ from plot to plot.

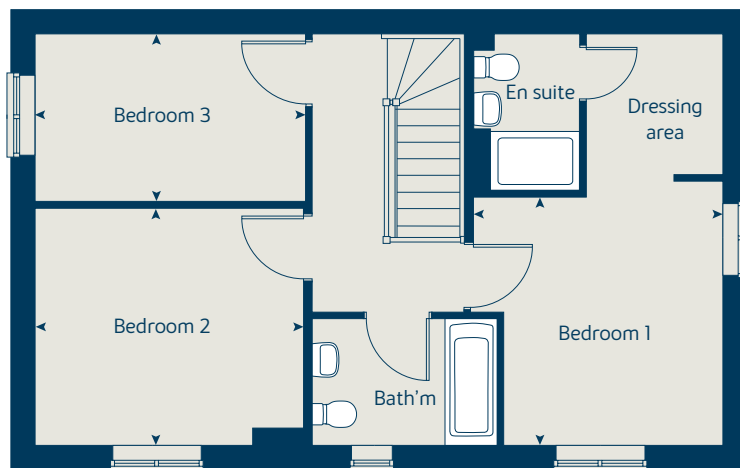
The floorplans shown are not to scale. Measurements are based on the original drawings. Slight variations may occur during construction.

Produced by the Vistry Group Design Studio.

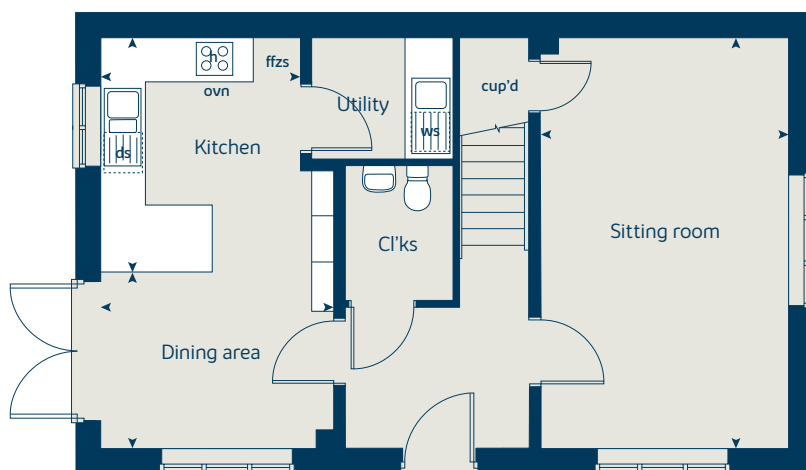
When you have finished with this leaflet please recycle it.

OTAV1 DS02592 / 01.23

### First floor



### Ground floor





# The Spruce V2

3 bedroom home

**LiveWest**  
A home for everyone

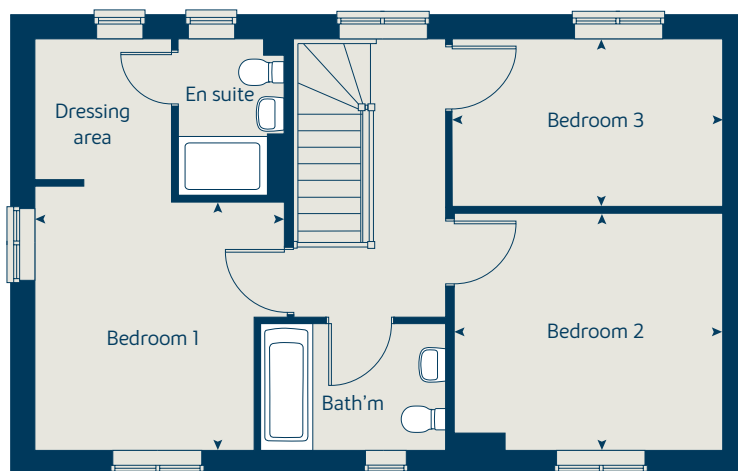
**Bovis  
Homes** 

[bovishomes.co.uk](http://bovishomes.co.uk)

# The Spruce V2

## 3 bedroom home

### First floor



Ground floor	metres	feet / inches
Kitchen	3.23 x 2.69	10' 7" x 8' 9"
Dining area	3.14 x 2.30	10' 3" x 7' 6"
Sitting room	5.53 x 3.32	18' 1" x 10' 10"

### First floor

Bedroom 1	3.39 x 3.33	11' 1" x 10' 11"
Bedroom 2	3.61 x 3.18	11' 10" x 10' 5"
Bedroom 3	3.61 x 2.25	11' 10" x 7' 4"

### The Spruce | X307V2 (IF) 01 OTAV1 |

This floorplan has been produced for illustrative purposes only. Room sizes shown are between arrow points as indicated on plan. The dimensions have tolerances of + or -50mm and should not be used other than for general guidance. If specific dimensions are required, enquiries should be made to the sales consultant.

ovn	oven	ffzs	fridge freezer space
h	hob	cup'd	cupboard
ds	dishwasher space	◀ ▶	measuring points
ws	washing machine space		

Please refer to the sales consultant for specific plot details as the illustrations shown are computer generated impressions of how the property may look so are indicative only. External details or finishes may vary on individual plots and homes may be built in either detached or attached styles depending on the development layout. Exact specifications, window styles and whether a property is left or right handed may differ from plot to plot.

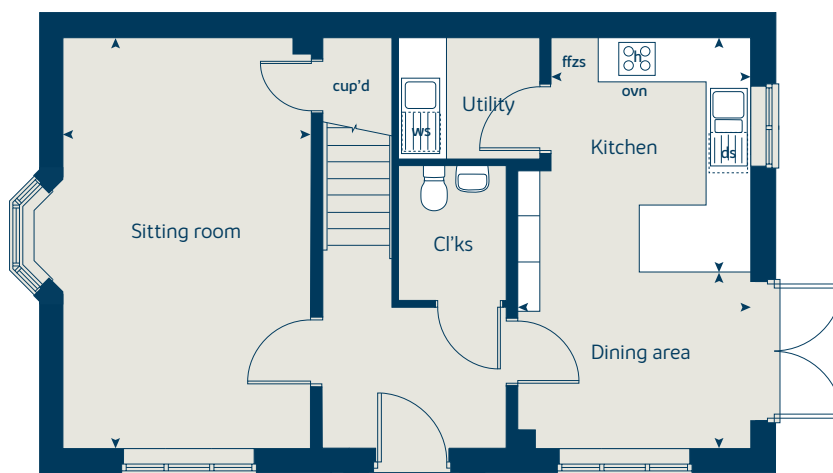
The floorplans shown are not to scale. Measurements are based on the original drawings. Slight variations may occur during construction.

Produced by the Vistry Group Design Studio.

When you have finished with this leaflet please recycle it.

OTAV1 DS02592 / 01.23

### Ground floor





# The Cypress

3 bedroom home

**LiveWest**  
A home for everyone

**Bovis  
Homes** 

[bovishomes.co.uk](http://bovishomes.co.uk)

# The Cypress

## 3 bedroom home

Ground floor	metres	feet / inches
Kitchen / dining area	5.52 x 3.12	18' 1" x 10' 2"
Sitting room	4.33 x 3.40	14' 2" x 11' 1"

### First floor

Bedroom 1	4.09 x 3.28	13' 5" x 10' 9"
Bedroom 2	3.28 x 2.77	10' 9" x 9' 1"
Bedroom 3	3.54 x 2.16	11' 7" x 7' 1"

### The Cypress | X308 (IF) 01 OTAV1 |

This floorplan has been produced for illustrative purposes only. Room sizes shown are between arrow points as indicated on plan. The dimensions have tolerances of + or -50mm and should not be used other than for general guidance. If specific dimensions are required, enquiries should be made to the sales consultant.

\* Utility door applies to selected plots only. Please see sales consultant for further details.

ovn	oven	ffzs	fridge freezer space
h	hob	cup'd	cupboard
ds	dishwasher space	◀ ▶	measuring points
ws	washing machine space		

Please refer to the sales consultant for specific plot details as the illustrations shown are computer generated impressions of how the property may look so are indicative only. External details or finishes may vary on individual plots and homes may be built in either detached or attached styles depending on the development layout. Exact specifications, window styles and whether a property is left or right handed may differ from plot to plot.

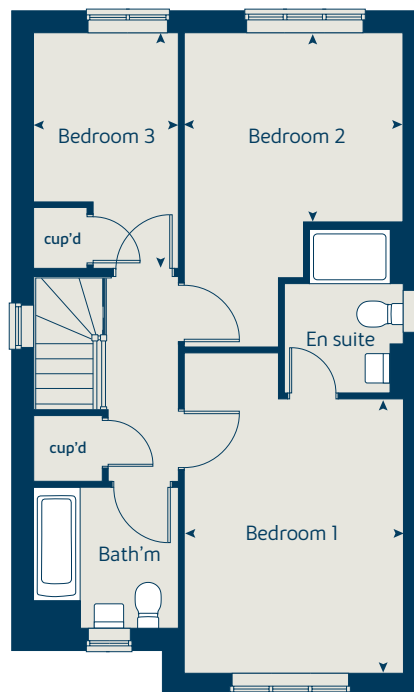
The floorplans shown are not to scale. Measurements are based on the original drawings. Slight variations may occur during construction.

Produced by the Vistry Group Design Studio.

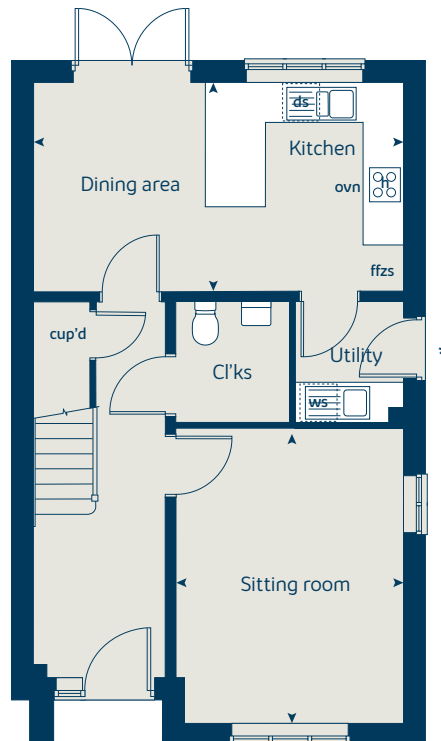
When you have finished with this leaflet please recycle it.

OTAV1 DS02592 / 01.23

## First floor



## Ground floor





# The Birch

5 bedroom home

**LiveWest**  
A home for everyone

**Bovis  
Homes** 

[bovishomes.co.uk](http://bovishomes.co.uk)

# The Birch

## 5 bedroom home

Ground floor	metres	feet / inches
Kitchen	3.94 x 3.71	12' 11" x 12' 2"
Family / dining area	5.42 x 3.51	17' 9" x 11' 6"
Sitting room	4.17 x 3.61	13' 8" x 11' 10"
Study / dining room	3.41 x 3.00	11' 2" x 9' 10"

### First floor

Bedroom 1	3.62 x 3.51	11' 10" x 11' 6"
Bedroom 2	3.92 x 2.90	12' 9" x 9' 6"
Bedroom 3	3.06 x 2.82	10' 0" x 9' 3"
Bedroom 4	2.98 x 2.83	9' 9" x 9' 3"
Bedroom 5	3.00 x 2.83	9' 10" x 9' 3"

### The Birch | X518 (IF) 01 OTAV1 |

This floorplan has been produced for illustrative purposes only. Room sizes shown are between arrow points as indicated on plan. The dimensions have tolerances of + or -50mm and should not be used other than for general guidance. If specific dimensions are required, enquiries should be made to the sales consultant.

ovn	oven	ldr	larder
h	hob	cyl	hot water cylinder
dw	dishwasher	w	wardrobe
ws	washing machine space	cup'd	cupboard
ffzr	fridge freezer	<>	measuring points

Please refer to the sales consultant for specific plot details as the illustrations shown are computer generated impressions of how the property may look so are indicative only. External details or finishes may vary on individual plots and homes may be built in either detached or attached styles depending on the development layout. Exact specifications, window styles and whether a property is left or right handed may differ from plot to plot.

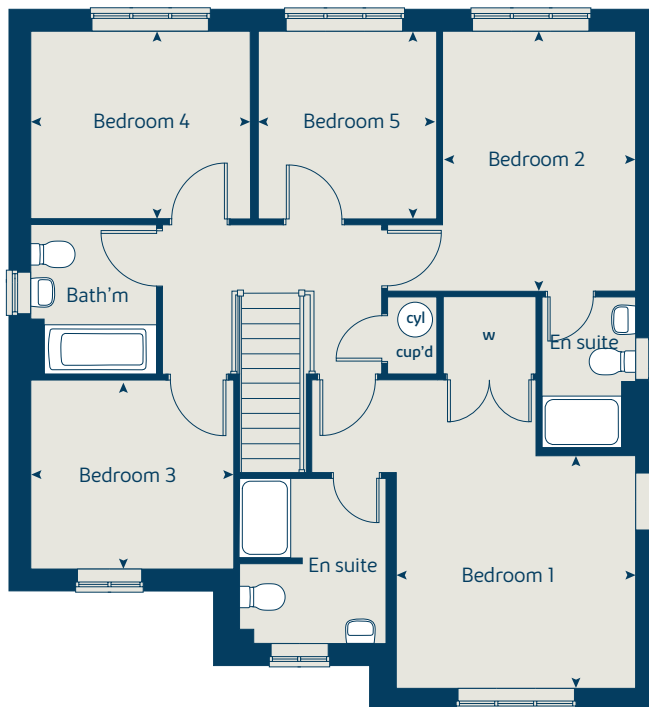
The floorplans shown are not to scale. Measurements are based on the original drawings. Slight variations may occur during construction.

Produced by the Vistry Group Design Studio.

When you have finished with this leaflet please recycle it.

OTAV1 DS02592 / 01.23

### First floor



### Ground floor





# The Yew

5 bedroom home

**LiveWest**  
A home for everyone

**Bovis  
Homes** 

[bovishomes.co.uk](http://bovishomes.co.uk)



# The Yew

## 5 bedroom home

Ground floor	metres	feet / inches
Kitchen	3.71 x 3.17	12' 2" x 10' 4"
Family / dining area	4.74 x 3.17	15' 6" x 10' 4"
Sitting room	4.69 x 3.17	15' 4" x 10' 4"
Study	3.17 x 1.76	10' 4" x 5' 9"

First floor	metres	feet / inches
Bedroom 1	4.18 x 3.73	13' 8" x 12' 2"
Bedroom 3	4.20 x 3.23	13' 8" x 10' 7"
Bedroom 5	2.92 x 2.27	9' 6" x 7' 5"

Second floor	metres	feet / inches
Bedroom 2	6.04 x 3.23	19' 9" x 10' 7"
Bedroom 4	3.73 x 3.47	12' 2" x 11' 4"

### The Yew | X519 01 OTAV1 |

This floorplan has been produced for illustrative purposes only. Room sizes shown are between arrow points as indicated on plan. The dimensions have tolerances of + or -50mm and should not be used other than for general guidance. If specific dimensions are required, enquiries should be made to the sales consultant.

ovn	oven	ldr	larder
h	hob	w	wardrobe
dw	dishwasher	cup'd	cupboard
ws	washing machine space	cyl	hot water cylinder
ffzr	fridge freezer	◀ ▶	measuring points

Please refer to the sales consultant for specific plot details as the illustrations shown are computer generated impressions of how the property may look so are indicative only. External details or finishes may vary on individual plots and homes may be built in either detached or attached styles depending on the development layout. Exact specifications, window styles and whether a property is left or right handed may differ from plot to plot.

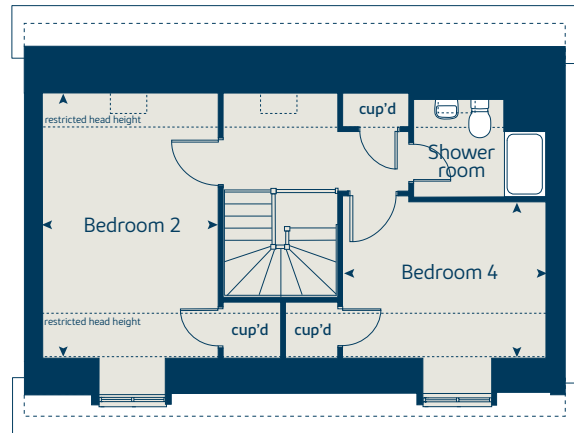
The floorplans shown are not to scale. Measurements are based on the original drawings. Slight variations may occur during construction.

Produced by the Vistry Group Design Studio.

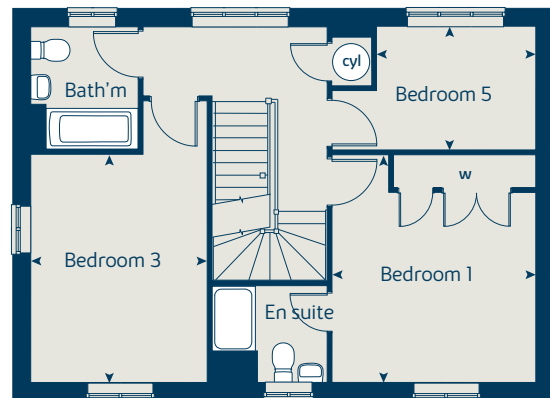
When you have finished with this leaflet please recycle it.

OTAV1 DS02592 / 01.23

## Second floor



## First floor



## Ground floor





# The Lime

5 bedroom home

**LiveWest**  
A home for everyone

**Bovis  
Homes** 

[bovishomes.co.uk](http://bovishomes.co.uk)

# The Lime

## 5 bedroom home

Ground floor	metres	feet / inches
Kitchen	4.24 x 3.93	13' 10" x 12' 10"
Family / dining area	3.77 x 3.58	12' 4" x 11' 8"
Sitting room	5.39 x 3.86	17' 8" x 12' 7"
Dining room	3.86 x 2.78	12' 7" x 9' 1"
Study	3.58 x 2.55	11' 8" x 8' 4"

### First floor

Bedroom 1	4.05 x 3.76	13' 3" x 12' 3"
Bedroom 2	4.05 x 3.52	13' 3" x 11' 6"
Bedroom 3	3.26 x 3.24	10' 7" x 10' 6"
Bedroom 4	3.55 x 2.26	11' 7" x 7' 4"
Bedroom 5	2.83 x 2.64	9' 3" x 8' 7"

### The Lime | X520 (IF) 01 OTAV1 |

This floorplan has been produced for illustrative purposes only. Room sizes shown are between arrow points as indicated on plan. The dimensions have tolerances of + or -50mm and should not be used other than for general guidance. If specific dimensions are required, enquiries should be made to the sales consultant.

① Alternative rear door layout applies to plots 269, 365, 366 and 370 only. Please see sales consultant for further details.

ovn	oven	cyl	hot water cylinder
h	hob	w	wardrobe
dw	dishwasher	cup'd	cupboard
ws	washing machine space	◀ ▶	measuring points
ffzr	fridge freezer		

Please refer to the sales consultant for specific plot details as the illustrations shown are computer generated impressions of how the property may look so are indicative only. External details or finishes may vary on individual plots and homes may be built in either detached or attached styles depending on the development layout. Exact specifications, window styles and whether a property is left or right handed may differ from plot to plot.

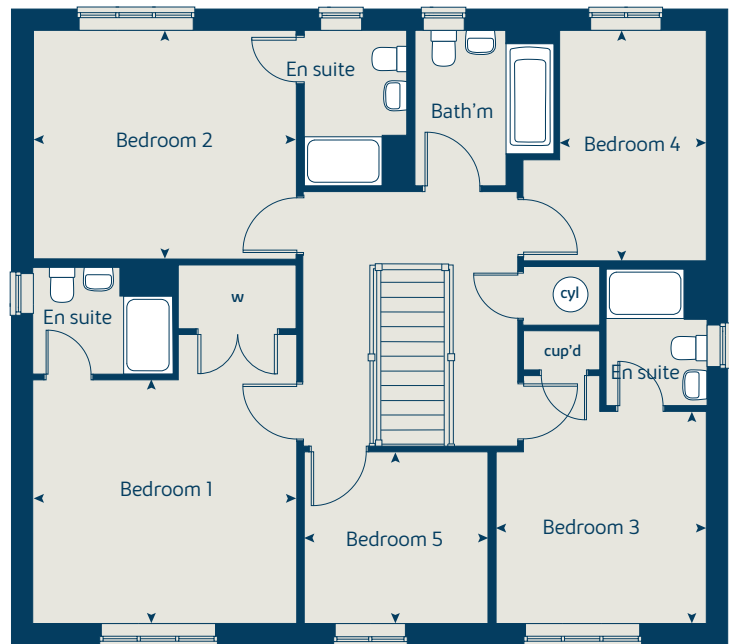
The floorplans shown are not to scale. Measurements are based on the original drawings. Slight variations may occur during construction.

Produced by the Vistry Group Design Studio.

When you have finished with this leaflet please recycle it.

OTAV1 DS08098 / 11.23

## First floor



## Ground floor





# The Tors

Tavistock

Specification

[bovishomes.co.uk](http://bovishomes.co.uk)

**Bovis  
Homes** 

# The Tors

## Tavistock

Use this guide to see what features are included in your new home. Your sales consultant will be happy to discuss the **Select** range of extras available.



### Kitchen

- 2 bedroom  
The Buckthorn  
The Holly
- 3 bedroom  
The Hazel  
The Cypress  
The Spruce  
The Poplar
- 4 bedroom  
The Juniper  
The Chestnut  
The Aspen  
The Willow  
The Alder
- 5 bedroom  
The Birch  
The Yew  
The Lime

Choice of Standard fitted kitchen (doors and worktops)	<input checked="" type="checkbox"/>	<input checked="" type="checkbox"/>	<input checked="" type="checkbox"/>	<input checked="" type="checkbox"/>	<input checked="" type="checkbox"/>	<input checked="" type="checkbox"/>	<input checked="" type="checkbox"/>	<input checked="" type="checkbox"/>	<input checked="" type="checkbox"/>
Choice of Premium fitted kitchen (doors and worktops)	<input type="checkbox"/>	<input type="checkbox"/>	<input type="checkbox"/>	<input type="checkbox"/>	<input type="checkbox"/>	<input type="checkbox"/>	<input type="checkbox"/>	<input type="checkbox"/>	<input type="checkbox"/>
Stainless steel sink and drainer (single bowl) with chrome mixer tap	<input checked="" type="checkbox"/>	<input checked="" type="checkbox"/>	<input checked="" type="checkbox"/>	<input checked="" type="checkbox"/>	<input checked="" type="checkbox"/>	<input checked="" type="checkbox"/>	<input checked="" type="checkbox"/>	<input checked="" type="checkbox"/>	<input checked="" type="checkbox"/>
Stainless steel sink and drainer (single and a half bowl) with chrome mixer tap	<input type="checkbox"/>	<input checked="" type="checkbox"/>	<input checked="" type="checkbox"/>	<input checked="" type="checkbox"/>	<input checked="" type="checkbox"/>	<input checked="" type="checkbox"/>	<input checked="" type="checkbox"/>	<input checked="" type="checkbox"/>	<input checked="" type="checkbox"/>
Stainless steel sink and drainer (single bowl) with chrome mixer tap in utility	<input type="checkbox"/>	<input type="checkbox"/>	<input checked="" type="checkbox"/>	<input checked="" type="checkbox"/>	<input type="checkbox"/>	<input type="checkbox"/>	<input type="checkbox"/>	<input type="checkbox"/>	<input type="checkbox"/>
Hotpoint hob (60cm) with built-in single underoven, with stainless steel splashback and curved glass chimney hood	<input checked="" type="checkbox"/>	<input checked="" type="checkbox"/>	<input checked="" type="checkbox"/>	<input checked="" type="checkbox"/>	<input checked="" type="checkbox"/>	<input checked="" type="checkbox"/>	<input checked="" type="checkbox"/>	<input checked="" type="checkbox"/>	<input checked="" type="checkbox"/>
Hotpoint hob (75 cm) with built-in double high level oven, with glass splashback and curved glass chimney hood	<input type="checkbox"/>	<input type="checkbox"/>	<input type="checkbox"/>	<input type="checkbox"/>	<input checked="" type="checkbox"/>	<input checked="" type="checkbox"/>	<input checked="" type="checkbox"/>	<input checked="" type="checkbox"/>	<input checked="" type="checkbox"/>
Bosch (75cm) hob with built-in double oven at high level, with glass splashback and stainless steel pyramid chimney hood	<input type="checkbox"/>	<input type="checkbox"/>	<input type="checkbox"/>	<input type="checkbox"/>	<input type="checkbox"/>	<input type="checkbox"/>	<input type="checkbox"/>	<input checked="" type="checkbox"/>	<input checked="" type="checkbox"/>
Bosch (75cm) hob with two built-in single ovens at high level, with glass splashback and stainless steel chimney hood	<input type="checkbox"/>	<input type="checkbox"/>	<input type="checkbox"/>	<input type="checkbox"/>	<input type="checkbox"/>	<input type="checkbox"/>	<input type="checkbox"/>	<input type="checkbox"/>	<input checked="" type="checkbox"/>
Downlights in white finish	<input checked="" type="checkbox"/>	<input checked="" type="checkbox"/>	<input checked="" type="checkbox"/>	<input checked="" type="checkbox"/>	<input checked="" type="checkbox"/>	<input checked="" type="checkbox"/>	<input checked="" type="checkbox"/>	<input checked="" type="checkbox"/>	<input checked="" type="checkbox"/>
Pre-wired for under-unit lighting option	<input checked="" type="checkbox"/>	<input checked="" type="checkbox"/>	<input checked="" type="checkbox"/>	<input checked="" type="checkbox"/>	<input checked="" type="checkbox"/>	<input checked="" type="checkbox"/>	<input checked="" type="checkbox"/>	<input checked="" type="checkbox"/>	<input checked="" type="checkbox"/>
LED under-unit flexible strip lighting	<input type="checkbox"/>	<input type="checkbox"/>	<input type="checkbox"/>	<input type="checkbox"/>	<input type="checkbox"/>	<input type="checkbox"/>	<input type="checkbox"/>	<input checked="" type="checkbox"/>	<input checked="" type="checkbox"/>
Fridge / freezer space	<input checked="" type="checkbox"/>	<input checked="" type="checkbox"/>	<input checked="" type="checkbox"/>	<input checked="" type="checkbox"/>	<input checked="" type="checkbox"/>	<input checked="" type="checkbox"/>	<input checked="" type="checkbox"/>	<input checked="" type="checkbox"/>	<input checked="" type="checkbox"/>
Integrated (Indesit) 50 / 50 fridge freezer	<input type="checkbox"/>	<input type="checkbox"/>	<input type="checkbox"/>	<input type="checkbox"/>	<input checked="" type="checkbox"/>	<input checked="" type="checkbox"/>	<input checked="" type="checkbox"/>	<input checked="" type="checkbox"/>	<input checked="" type="checkbox"/>
Space for integrated dishwasher with plumbing and electrics (inc. removable base unit)	<input checked="" type="checkbox"/>	<input checked="" type="checkbox"/>	<input checked="" type="checkbox"/>	<input checked="" type="checkbox"/>	<input checked="" type="checkbox"/>	<input checked="" type="checkbox"/>	<input checked="" type="checkbox"/>	<input checked="" type="checkbox"/>	<input checked="" type="checkbox"/>
Integrated (Indesit) dishwasher	<input type="checkbox"/>	<input type="checkbox"/>	<input type="checkbox"/>	<input type="checkbox"/>	<input type="checkbox"/>	<input type="checkbox"/>	<input type="checkbox"/>	<input checked="" type="checkbox"/>	<input checked="" type="checkbox"/>
Space for washing machine with plumbing and electrics in utility	<input type="checkbox"/>	<input type="checkbox"/>	<input checked="" type="checkbox"/>	<input checked="" type="checkbox"/>	<input type="checkbox"/>	<input type="checkbox"/>	<input type="checkbox"/>	<input checked="" type="checkbox"/>	<input checked="" type="checkbox"/>
Space for washing machine with plumbing and electrics in kitchen	<input checked="" type="checkbox"/>	<input checked="" type="checkbox"/>	<input type="checkbox"/>	<input type="checkbox"/>	<input checked="" type="checkbox"/>	<input checked="" type="checkbox"/>	<input checked="" type="checkbox"/>	<input type="checkbox"/>	<input type="checkbox"/>

### Bathrooms and en suite(s)

Ideal Standard contemporary white Studio Echo sanitary ware suite	<input checked="" type="checkbox"/>	<input checked="" type="checkbox"/>	<input checked="" type="checkbox"/>	<input checked="" type="checkbox"/>	<input checked="" type="checkbox"/>	<input checked="" type="checkbox"/>	<input checked="" type="checkbox"/>	<input checked="" type="checkbox"/>	<input checked="" type="checkbox"/>
Ideal Standard contemporary white Concept Air sanitary ware suite with Aqua blade WC technology	<input type="checkbox"/>	<input type="checkbox"/>	<input type="checkbox"/>	<input type="checkbox"/>	<input checked="" type="checkbox"/>	<input checked="" type="checkbox"/>	<input checked="" type="checkbox"/>	<input checked="" type="checkbox"/>	<input checked="" type="checkbox"/>
Ideal Standard close coupled WC to cloakroom	<input checked="" type="checkbox"/>	<input checked="" type="checkbox"/>	<input checked="" type="checkbox"/>	<input checked="" type="checkbox"/>	<input checked="" type="checkbox"/>	<input checked="" type="checkbox"/>	<input checked="" type="checkbox"/>	<input checked="" type="checkbox"/>	<input checked="" type="checkbox"/>
Ideal Standard low profile shower tray with glass enclosure	<input type="checkbox"/>	<input checked="" type="checkbox"/>	<input checked="" type="checkbox"/>	<input checked="" type="checkbox"/>	<input checked="" type="checkbox"/>	<input checked="" type="checkbox"/>	<input checked="" type="checkbox"/>	<input checked="" type="checkbox"/>	<input checked="" type="checkbox"/>
Handheld hair wash attachment	<input type="checkbox"/>	<input checked="" type="checkbox"/>	<input checked="" type="checkbox"/>	<input checked="" type="checkbox"/>	<input checked="" type="checkbox"/>	<input checked="" type="checkbox"/>	<input checked="" type="checkbox"/>	<input checked="" type="checkbox"/>	<input checked="" type="checkbox"/>
Shower over the bath	<input checked="" type="checkbox"/>	<input type="checkbox"/>	<input type="checkbox"/>	<input type="checkbox"/>	<input type="checkbox"/>	<input type="checkbox"/>	<input type="checkbox"/>	<input type="checkbox"/>	<input type="checkbox"/>
Walk in shower in en suite to selected bedrooms	<input type="checkbox"/>	<input type="checkbox"/>	<input type="checkbox"/>	<input type="checkbox"/>	<input type="checkbox"/>	<input type="checkbox"/>	<input type="checkbox"/>	<input checked="" type="checkbox"/>	<input checked="" type="checkbox"/>
En suite bath to bedroom 1	<input type="checkbox"/>	<input type="checkbox"/>	<input type="checkbox"/>	<input type="checkbox"/>	<input type="checkbox"/>	<input type="checkbox"/>	<input type="checkbox"/>	<input type="checkbox"/>	<input type="checkbox"/>
Choice of standard Porcelanosa wall tiling (splashback, half-height over bath, and full-height to shower cubicle)*	<input checked="" type="checkbox"/>	<input checked="" type="checkbox"/>	<input checked="" type="checkbox"/>	<input checked="" type="checkbox"/>	<input checked="" type="checkbox"/>	<input checked="" type="checkbox"/>	<input checked="" type="checkbox"/>	<input checked="" type="checkbox"/>	<input checked="" type="checkbox"/>
Choice of standard Porcelanosa wall tiling (half-height to walls with fitted sanitary ware, half-height over bath, and full-height to shower cubicle)*	<input type="checkbox"/>	<input type="checkbox"/>	<input type="checkbox"/>	<input type="checkbox"/>	<input type="checkbox"/>	<input type="checkbox"/>	<input type="checkbox"/>	<input checked="" type="checkbox"/>	<input checked="" type="checkbox"/>
Shaver socket / toothbrush charger to main en suite	<input checked="" type="checkbox"/>	<input checked="" type="checkbox"/>	<input checked="" type="checkbox"/>	<input checked="" type="checkbox"/>	<input checked="" type="checkbox"/>	<input checked="" type="checkbox"/>	<input checked="" type="checkbox"/>	<input checked="" type="checkbox"/>	<input checked="" type="checkbox"/>
Chrome bezel LED bulkhead to bathroom and en suite(s)	<input checked="" type="checkbox"/>	<input checked="" type="checkbox"/>	<input checked="" type="checkbox"/>	<input checked="" type="checkbox"/>	<input checked="" type="checkbox"/>	<input checked="" type="checkbox"/>	<input checked="" type="checkbox"/>	<input checked="" type="checkbox"/>	<input checked="" type="checkbox"/>
Chrome towel warmer in bathroom and en suite(s)	<input type="checkbox"/>	<input type="checkbox"/>	<input type="checkbox"/>	<input type="checkbox"/>	<input checked="" type="checkbox"/>	<input checked="" type="checkbox"/>	<input checked="" type="checkbox"/>	<input checked="" type="checkbox"/>	<input checked="" type="checkbox"/>

### Bedrooms

- 2 bedroom  
The Buckthorn  
The Holly
- 3 bedroom  
The Hazel  
The Cypress  
The Spruce  
The Poplar
- 4 bedroom  
The Juniper  
The Chestnut  
The Aspen  
The Willow  
The Alder
- 5 bedroom  
The Birch  
The Yew  
The Lime

Built-in wardrobe(s) to bedroom 1 (with shelf and rail)	<input type="checkbox"/>	<input type="checkbox"/>	<input type="checkbox"/>	<input checked="" type="checkbox"/>	<input checked="" type="checkbox"/>	<input checked="" type="checkbox"/>	<input checked="" type="checkbox"/>	<input checked="" type="checkbox"/>	<input checked="" type="checkbox"/>
<b>Doors and Windows</b>									
Front door with multi-point security locking system and security chain	<input checked="" type="checkbox"/>	<input checked="" type="checkbox"/>	<input checked="" type="checkbox"/>	<input checked="" type="checkbox"/>	<input checked="" type="checkbox"/>	<input checked="" type="checkbox"/>	<input checked="" type="checkbox"/>	<input checked="" type="checkbox"/>	<input checked="" type="checkbox"/>
Chrome front door numbers	<input checked="" type="checkbox"/>	<input checked="" type="checkbox"/>	<input checked="" type="checkbox"/>	<input checked="" type="checkbox"/>	<input checked="" type="checkbox"/>	<input checked="" type="checkbox"/>	<input checked="" type="checkbox"/>	<input checked="" type="checkbox"/>	<input checked="" type="checkbox"/>
PVCu double glazing to windows	<input checked="" type="checkbox"/>	<input checked="" type="checkbox"/>	<input checked="" type="checkbox"/>	<input checked="" type="checkbox"/>	<input checked="" type="checkbox"/>	<input checked="" type="checkbox"/>	<input checked="" type="checkbox"/>	<input checked="" type="checkbox"/>	<input checked="" type="checkbox"/>
Double glazed PVCu French doors	<input checked="" type="checkbox"/>	<input checked="" type="checkbox"/>	<input checked="" type="checkbox"/>	<input checked="" type="checkbox"/>	<input type="checkbox"/>	<input type="checkbox"/>	<input type="checkbox"/>	<input type="checkbox"/>	<input type="checkbox"/>
Powder coated aluminium double glazed bi-fold doors	<input type="checkbox"/>	<input type="checkbox"/>	<input type="checkbox"/>	<input type="checkbox"/>	<input checked="" type="checkbox"/>	<input checked="" type="checkbox"/>	<input checked="" type="checkbox"/>	<input checked="" type="checkbox"/>	<input checked="" type="checkbox"/>
Internal doors to be Cottage style pre-primed with Brass Satin finish handles	<input checked="" type="checkbox"/>	<input checked="" type="checkbox"/>	<input checked="" type="checkbox"/>	<input checked="" type="checkbox"/>	<input checked="" type="checkbox"/>	<input checked="" type="checkbox"/>	<input checked="" type="checkbox"/>	<input checked="" type="checkbox"/>	<input checked="" type="checkbox"/>
Paving outside French / bi-fold door and path to garage personnel door (where applicable)	<input checked="" type="checkbox"/>	<input checked="" type="checkbox"/>	<input checked="" type="checkbox"/>	<input checked="" type="checkbox"/>	<input checked="" type="checkbox"/>	<input checked="" type="checkbox"/>	<input checked="" type="checkbox"/>	<input checked="" type="checkbox"/>	<input checked="" type="checkbox"/>
<b>General</b>									
White painted walls and smooth white ceilings	<input checked="" type="checkbox"/>	<input checked="" type="checkbox"/>	<input checked="" type="checkbox"/>	<input checked="" type="checkbox"/>	<input checked="" type="checkbox"/>	<input checked="" type="checkbox"/>	<input checked="" type="checkbox"/>	<input checked="" type="checkbox"/>	<input checked="" type="checkbox"/>
Combined usb / double sockets in kitchen and bedroom 1	<input checked="" type="checkbox"/>	<input checked="" type="checkbox"/>	<input checked="" type="checkbox"/>	<input checked="" type="checkbox"/>	<input checked="" type="checkbox"/>	<input checked="" type="checkbox"/>	<input checked="" type="checkbox"/>	<input checked="" type="checkbox"/>	<input checked="" type="checkbox"/>
Multi-media point in living room	<input checked="" type="checkbox"/>	<input checked="" type="checkbox"/>	<input checked="" type="checkbox"/>	<input checked="" type="checkbox"/>	<input checked="" type="checkbox"/>	<input checked="" type="checkbox"/>	<input checked="" type="checkbox"/>	<input checked="" type="checkbox"/>	<input checked="" type="checkbox"/>
TV point to bedroom 1 and family room (where applicable)	<input checked="" type="checkbox"/>	<input checked="" type="checkbox"/>	<input checked="" type="checkbox"/>	<input checked="" type="checkbox"/>	<input checked="" type="checkbox"/>	<input checked="" type="checkbox"/>	<input checked="" type="checkbox"/>	<input checked="" type="checkbox"/>	<input checked="" type="checkbox"/>
Master telephone socket (plus to study where shown)	<input checked="" type="checkbox"/>	<input checked="" type="checkbox"/>	<input checked="" type="checkbox"/>	<input checked="" type="checkbox"/>	<input checked="" type="checkbox"/>	<input checked="" type="checkbox"/>	<input checked="" type="checkbox"/>	<input checked="" type="checkbox"/>	<input checked="" type="checkbox"/>
Gas central heating with wall mounted combi-boiler, programme selector and room thermostat(s)	<input checked="" type="checkbox"/>	<input checked="" type="checkbox"/>	<input checked="" type="checkbox"/>	<input checked="" type="checkbox"/>	<input type="checkbox"/>	<input type="checkbox"/>	<input type="checkbox"/>	<input type="checkbox"/>	<input type="checkbox"/>
Gas central heating with wall mounted boiler and separate hot water cylinder, programme selector and room thermostat(s)	<input type="checkbox"/>	<input type="checkbox"/>	<input type="checkbox"/>	<input type="checkbox"/>	<input type="checkbox"/>	<input type="checkbox"/>	<input checked="" type="checkbox"/>	<input checked="" type="checkbox"/>	<input checked="" type="checkbox"/>
Thermostatic valves to all radiators (with the exception of rooms with separate thermostat control)	<input checked="" type="checkbox"/>	<input checked="" type="checkbox"/>	<input checked="" type="checkbox"/>	<input checked="" type="checkbox"/>	<input checked="" type="checkbox"/>	<input checked="" type="checkbox"/>	<input checked="" type="checkbox"/>	<input checked="" type="checkbox"/>	<input checked="" type="checkbox"/>
Fitted external tap	<input checked="" type="checkbox"/>	<input checked="" type="checkbox"/>	<input checked="" type="checkbox"/>	<input checked="" type="checkbox"/>	<input checked="" type="checkbox"/>	<input checked="" type="checkbox"/>	<input checked="" type="checkbox"/>	<input checked="" type="checkbox"/>	<input checked="" type="checkbox"/>
External light fitted to front porch and wiring for external light to rear door	<input checked="" type="checkbox"/>	<input checked="" type="checkbox"/>	<input checked="" type="checkbox"/>	<input checked="" type="checkbox"/>	<input checked="" type="checkbox"/>	<input checked="" type="checkbox"/>	<input checked="" type="checkbox"/>	<input checked="" type="checkbox"/>	<input checked="" type="checkbox"/>
Mains Operated Doorbell (push), Satin Chrome finish	<input checked="" type="checkbox"/>	<input checked="" type="checkbox"/>	<input checked="" type="checkbox"/>	<input checked="" type="checkbox"/>	<input checked="" type="checkbox"/>	<input checked="" type="checkbox"/>	<input checked="" type="checkbox"/>	<input checked="" type="checkbox"/>	<input checked="" type="checkbox"/>
Mains wired smoke detectors with battery back-up	<input checked="" type="checkbox"/>	<input checked="" type="checkbox"/>	<input checked="" type="checkbox"/>	<input checked="" type="checkbox"/>	<input checked="" type="checkbox"/>	<input checked="" type="checkbox"/>	<input checked="" type="checkbox"/>	<input checked="" type="checkbox"/>	<input checked="" type="checkbox"/>
Battery powered Carbon Monoxide detector (wall mounted) to be provided for each floor	<input checked="" type="checkbox"/>	<input checked="" type="checkbox"/>	<input checked="" type="checkbox"/>	<input checked="" type="checkbox"/>	<input checked="" type="checkbox"/>	<input checked="" type="checkbox"/>	<input checked="" type="checkbox"/>	<input checked="" type="checkbox"/>	<input checked="" type="checkbox"/>
Power and lighting to 'on plot' garage (where applicable)	<input checked="" type="checkbox"/>	<input checked="" type="checkbox"/>	<input checked="" type="checkbox"/>	<input checked="" type="checkbox"/>	<input checked="" type="checkbox"/>	<input checked="" type="checkbox"/>	<input checked="" type="checkbox"/>	<input checked="" type="checkbox"/>	<input checked="" type="checkbox"/>
Enclosed fenced rear garden, and garden gate (where applicable).	<input checked="" type="checkbox"/>	<input checked="" type="checkbox"/>	<input checked="" type="checkbox"/>	<input checked="" type="checkbox"/>	<input checked="" type="checkbox"/>	<input checked="" type="checkbox"/>	<input checked="" type="checkbox"/>	<input checked="" type="checkbox"/>	<input checked="" type="checkbox"/>
Landscaped front gardens	<input checked="" type="checkbox"/>	<input checked="" type="checkbox"/>	<input checked="" type="checkbox"/>	<input checked="" type="checkbox"/>	<input checked="" type="checkbox"/>	<input checked="" type="checkbox"/>	<input checked="" type="checkbox"/>	<input checked="" type="checkbox"/>	<input checked="" type="checkbox"/>
Log burner - where flue installed	<input type="checkbox"/>	<input type="checkbox"/>	<input type="checkbox"/>	<input type="checkbox"/>	<input type="checkbox"/>	<input type="checkbox"/>	<input type="checkbox"/>	<input type="checkbox"/>	<input checked="" type="checkbox"/>
NHBC Buildmark cover	<input checked="" type="checkbox"/>	<input checked="" type="checkbox"/>	<input checked="" type="checkbox"/>	<input checked="" type="checkbox"/>	<input checked="" type="checkbox"/>	<input checked="" type="checkbox"/>	<input checked="" type="checkbox"/>	<input checked="" type="checkbox"/>	<input checked="" type="checkbox"/>
First two years' customer service support from Bovis Homes	<input checked="" type="checkbox"/>	<input checked="" type="checkbox"/>	<input checked="" type="checkbox"/>	<input checked="" type="checkbox"/>	<input checked="" type="checkbox"/>	<input checked="" type="checkbox"/>	<input checked="" type="checkbox"/>	<input checked="" type="checkbox"/>	<input checked="" type="checkbox"/>

\* Fitted as standard - included in the property

\* Subject to stage of construction

## So much choice...

Part of the excitement of buying a new home is the thrill of being the first person to live in the property and having a brand new contemporary kitchen and modern bathroom. Our premium brand partners ensure that all of our fixtures and fittings comply with the latest Government building regulations and only branded appliances are installed in your new home.

Once you know what specification comes included, you'll have a choice from our specially selected tiles for your kitchen and bathrooms, as well as kitchen worktops and cupboard doors. You can then use the Bovis Homes **Select** brochure to add the finishing touches to your home to make it extra special for you!

From personalising your bathrooms with stunning ceramics, or adding smooth sliding wardrobes to your master bedroom, there are a wide range of additional options and upgrades available.

The availability of items is subject to the stage of build, and can vary by development and house type. Our sales consultants will be happy to provide guidance.



When you have finished with this leaflet please recycle it.

The specification shown in this leaflet is correct at the time of going to press. Bovis Homes is continually reviewing and updating the specification on all housetypes and therefore reserves the right to change specification details. Photographs depict a typical Bovis Homes interior and may include optional upgrades. For full details regarding current specification and finishes, for the plots you are interested in, please refer to our sales consultant.

Produced by the Vistry Group Design Studio.

OTAV1 DS02592 / 09.22

**Bovis  
Homes** 